

# PRIME OFFICE SPACE WESTLAKE VILLAGE

664 SF AVAILABLE FOR SUBLEASE

AVAILABLE  
FOR SUBLEASE

**\$2.60/SF**  
**+ 398/MO**  
CAM FEES



## PROPERTY DETAILS

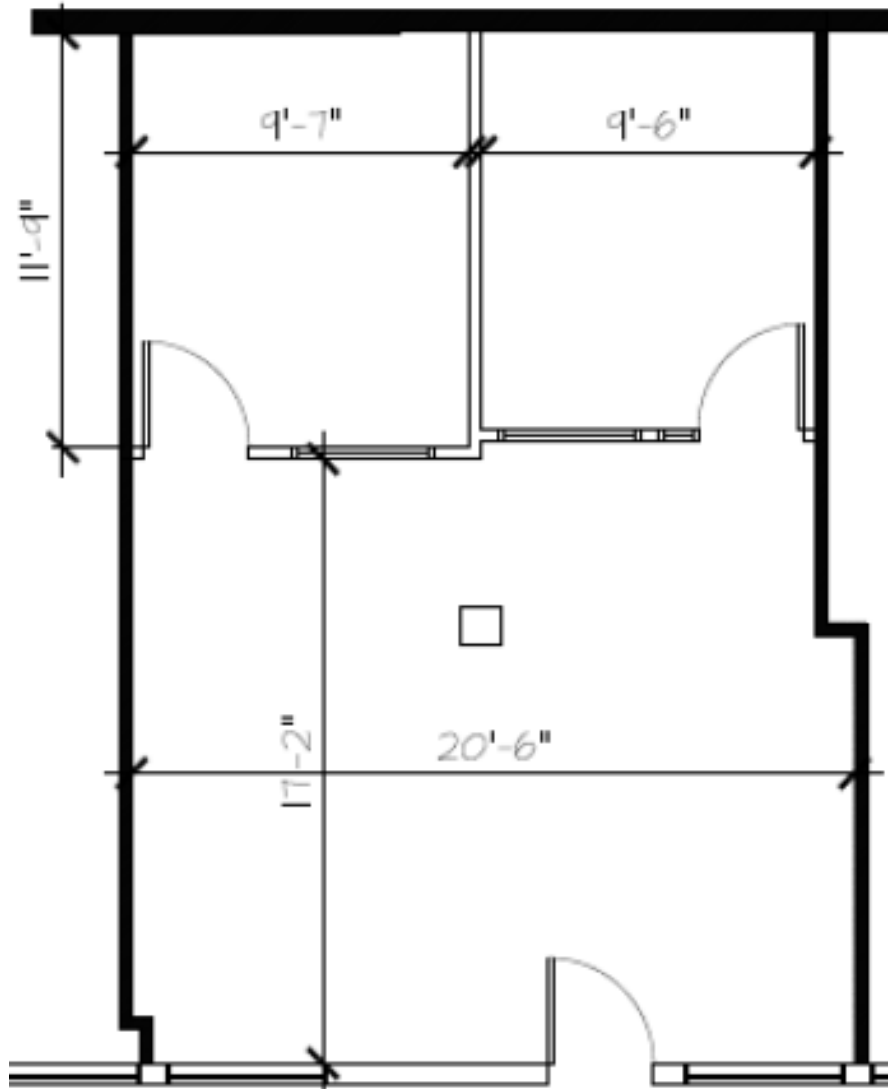
- **Sublease Term:** Until August 30, 2025
- **Parking:** Unreserved 4/1000 parking ratio
- **Offices:** 5 private offices with reception and large bullpen area
- **Views:** Just a few steps from gorgeous lake views
- **Ideal For:** Professional offices seeking a serene and prestigious location

GET IN TOUCH

 **FEDER & ASSOCIATES**  
COMMERCIAL REAL ESTATE  
SERVICE BEYOND EXPECTATION®

**RON FEDER**  
Senior Managing Director | DRE# 00983855  
(818) 222-0404  
RFEDER@RJFEDER.COM

**BROOKE FEDER-KENRICK**  
Commercial Associate | DRE# 02199320  
(818) 451-3636  
BKENRICK@RJFEDER.COM



**SUITE #125**  
**±664 R.S.F.**