



INVESTMENTS REALTY

DEVELOPMENT SITE

Development site on South Dade Transitway / Dixie Hwy - Homestead Submarket

14550 Mable Street, Homestead, FL 33032

DISCLAIMER NOTICE

The information contained in the following Marketing Brochure is proprietary and strictly confidential. It is intended to be reviewed only by the party receiving it from Global Investments Realty, Inc. ("Global Investments Realty") and should not be made available to any other person or entity without the written consent of Global Investments Realty. Global Investments Realty and property owner expressly disclaims that this Marketing Brochure has been prepared to provide summary, unverified information to prospective purchasers, and to establish only a preliminary level of interest in the subject property. As so, the info may include projections and estimates concerning the financial position, business strategy, plans, targets and potential objectives of the property Owner for future operations (including, but not limited to development plans and objectives). Such projections are based on our current expectations and assumptions about future events which may not prove to be accurate. The information contained herein is not a substitute for a thorough due diligence investigation. Global Investments Realty and property owner did not made any investigation, and makes no warranty or representation, with respect to the income or expenses for the subject property, the future projected financial performance of the property, the size and square footage of the property and improvements, the presence or absence of contaminating substances, PCB's or asbestos, the compliance with State and Federal regulations, the physical condition of the improvements thereon, or the financial condition or business prospects of any tenant, or any tenant's plans or intentions to continue its occupancy of the subject property. The information contained in this Marketing Brochure has been obtained from sources we believe to be reliable; however, Global Investments Realty and/or property owner did not verified, and will not verify, any of the information contained herein, nor has Global Investments Realty conducted any investigation regarding these matters and makes no warranty or representation whatsoever regarding the accuracy or completeness of the information provided. All potential buyers must take appropriate measures to verify all of the information set forth herein. Neither Global Investments Realty or property owner (and their respective affiliates, directors, employees or advisers of the foregoing), accept any liability for any loss howsoever arising, directly or indirectly, from this presentation or its contents.

ALL PROPERTY SHOWINGS ARE BY APPOINTMENT ONLY.

PLEASE CONSULT YOUR GLOBAL INVESTMENTS REALTY AGENT FOR MORE DETAILS.



DEV SITE



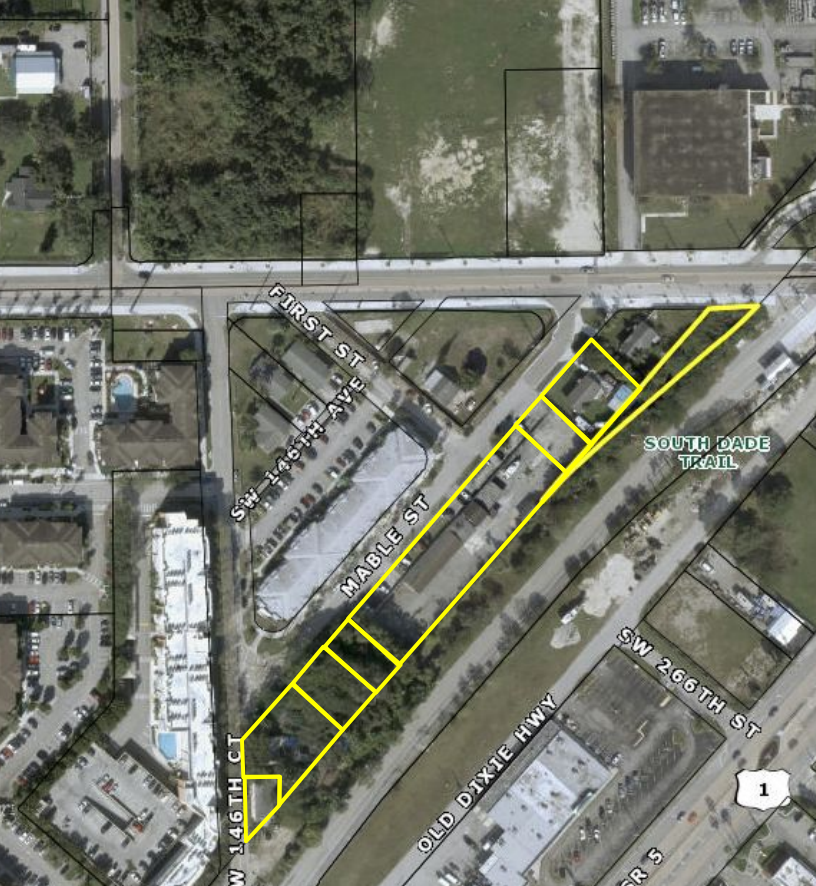
ASSET BREAKDOWN

Global Investments Realty is pleased to present the opportunity to acquire a development-ready assemblage in expanding South Dade Corridor.

- This generously sized 1.92-acre lot is located in the thriving Naranja community of Homestead, one of South Florida’s most active residential growth zones. Surrounded by large-scale housing developments and infrastructure investment, the property offers a valuable opportunity to bring a new multifamily project to a rapidly evolving area.
- Residential Potential: Preliminary design concepts for two 9-story buildings with up to 270 units (pending full approvals). Parking: Conceptual layout includes 365 parking spaces for residents and guests. Accessibility: Well-connected to transit, US-1, and the Florida Turnpike.
- High traffic counts and strong visibility on a major north-south artery, plus a walkable, evolving corridor with historic charm and modern appeal.
- The site sits within a fast-growing section of southern Miami-Dade County, where demand for new housing continues to rise due to affordability, regional job growth, and expanding public amenities. This location benefits from steady population influx of working families and renters, nearby schools, retail centers, and transit connections.

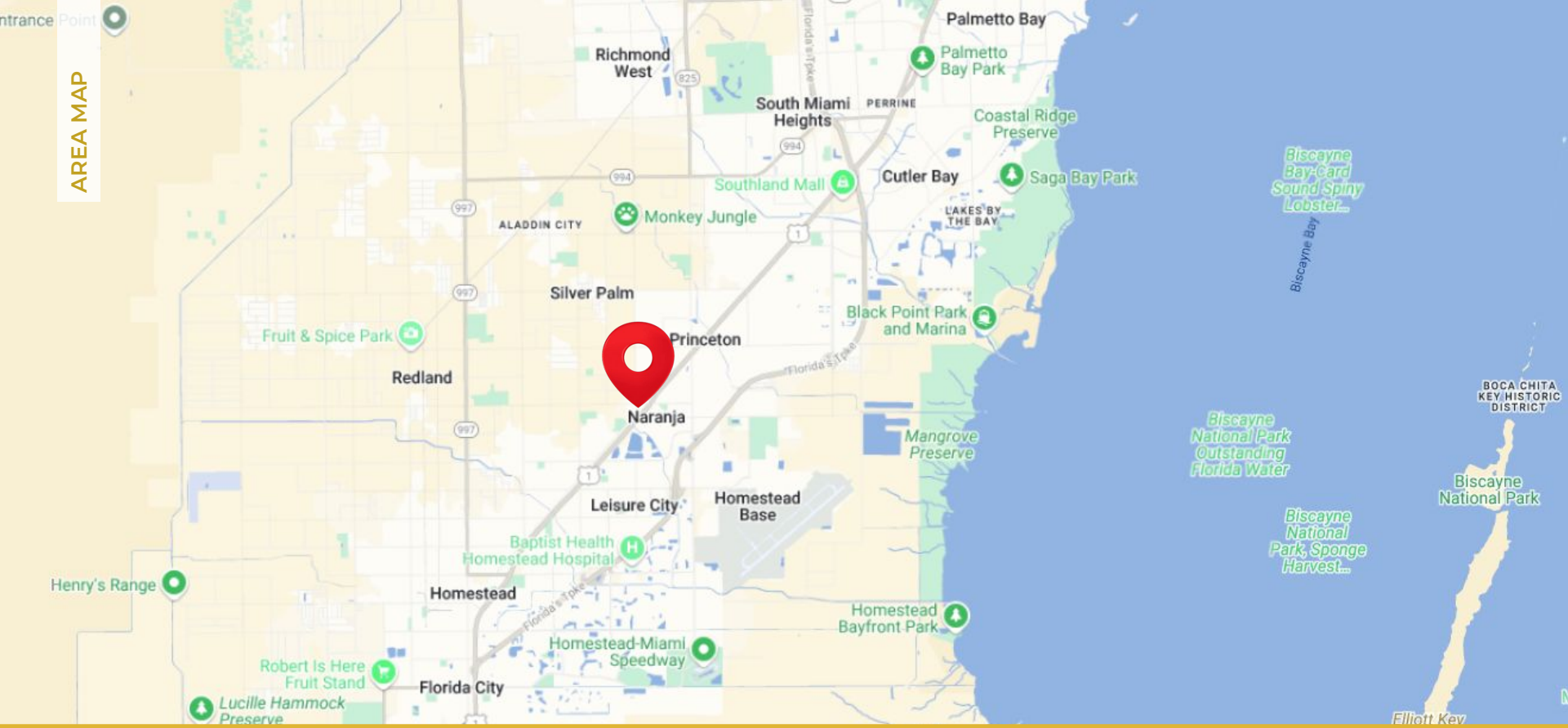
DEVELOPMENT SITE	JOEL RODRIGUEZ Principal / Broker	joel@glirealty.com	O. 305.635.3005 C. 786.285.7739
------------------	-------------------------------------	--------------------	------------------------------------

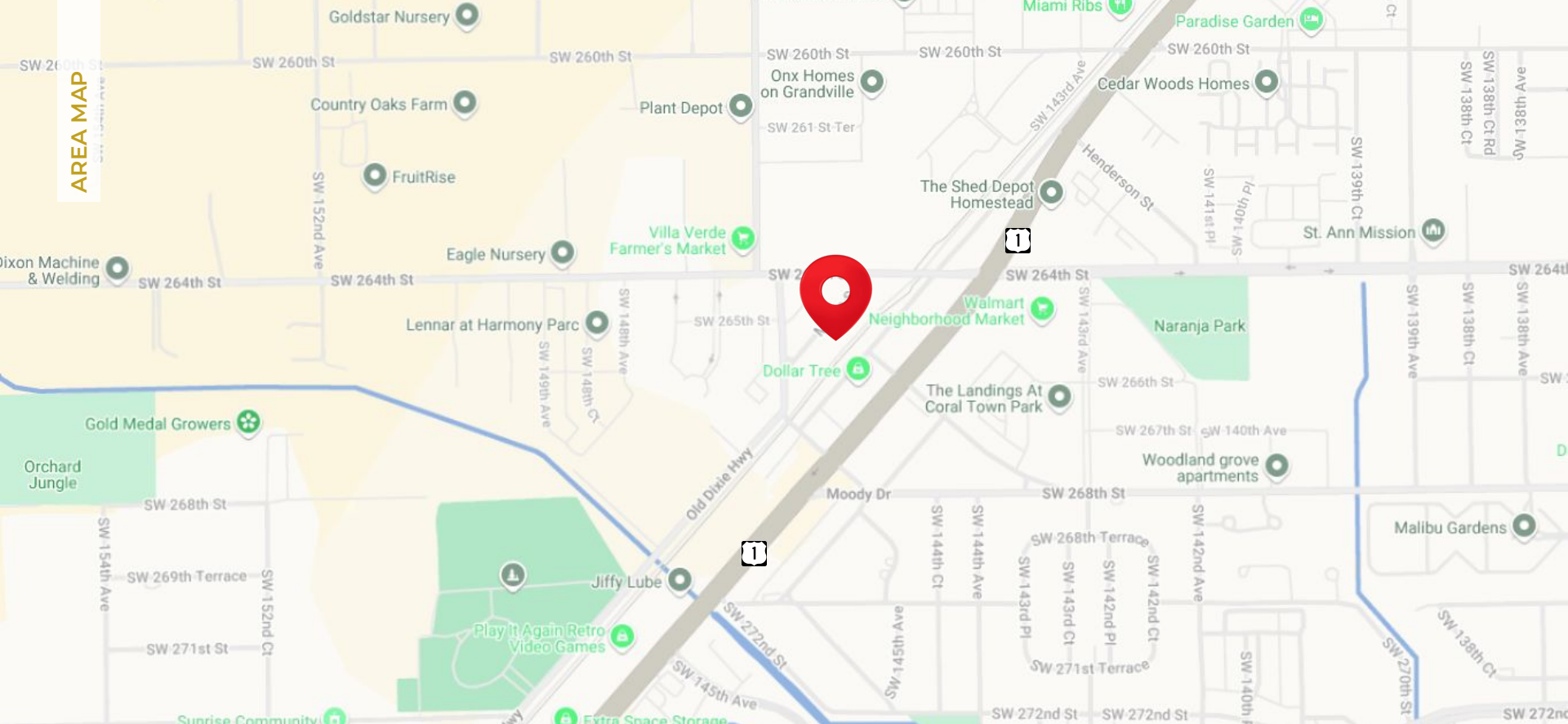
Procuring broker shall only be entitled to a commission, calculated in accordance with the rates approved by the principal only if such procuring broker executes a brokerage agreement acceptable to us and our principal and the conditions as set forth in the brokerage agreement are fully and unconditionally satisfied. Although all information furnished regarding property for sale, rental, or financing is from sources deemed reliable, such information has not been verified and no express representation is made nor is any to be implied as to the accuracy thereof and it is submitted subject to errors, omissions, change of price, rental or other conditions, prior sale, lease or financing, or withdrawal without notice and to any special conditions imposed by our principal.



INVESTMENT SUMMARY

Folios:	30-6934-004-0300	3,150 SF
	30-6934-004-0290	10,300 SF
	30-6934-004-0280	7,000 SF
	30-6934-004-0270	5,000 SF
	30-6934-004-0210	35,000 SF
	30-6934-004-0200	5,000 SF
	30-6934-004-0190	10,000 SF
	30-6934-000-1640	8,189 SF
Lot size:	1.92 Acres 83,639 SF*	
Zoning:	UC-MC Urban Core - Mixed Use Corridor	
Project:	Fully approved Administrative Site Plan Review (ASPR) and Preliminary Drawings.	
Planned Layout:	270 Units - Two 9-story buildings Parking: 365 spaces • Utilities: Fully approved by Miami-Dade Water & Sewer	
PRICE:	\$8,100,000.00	







DEV SITE



AADT: 40500

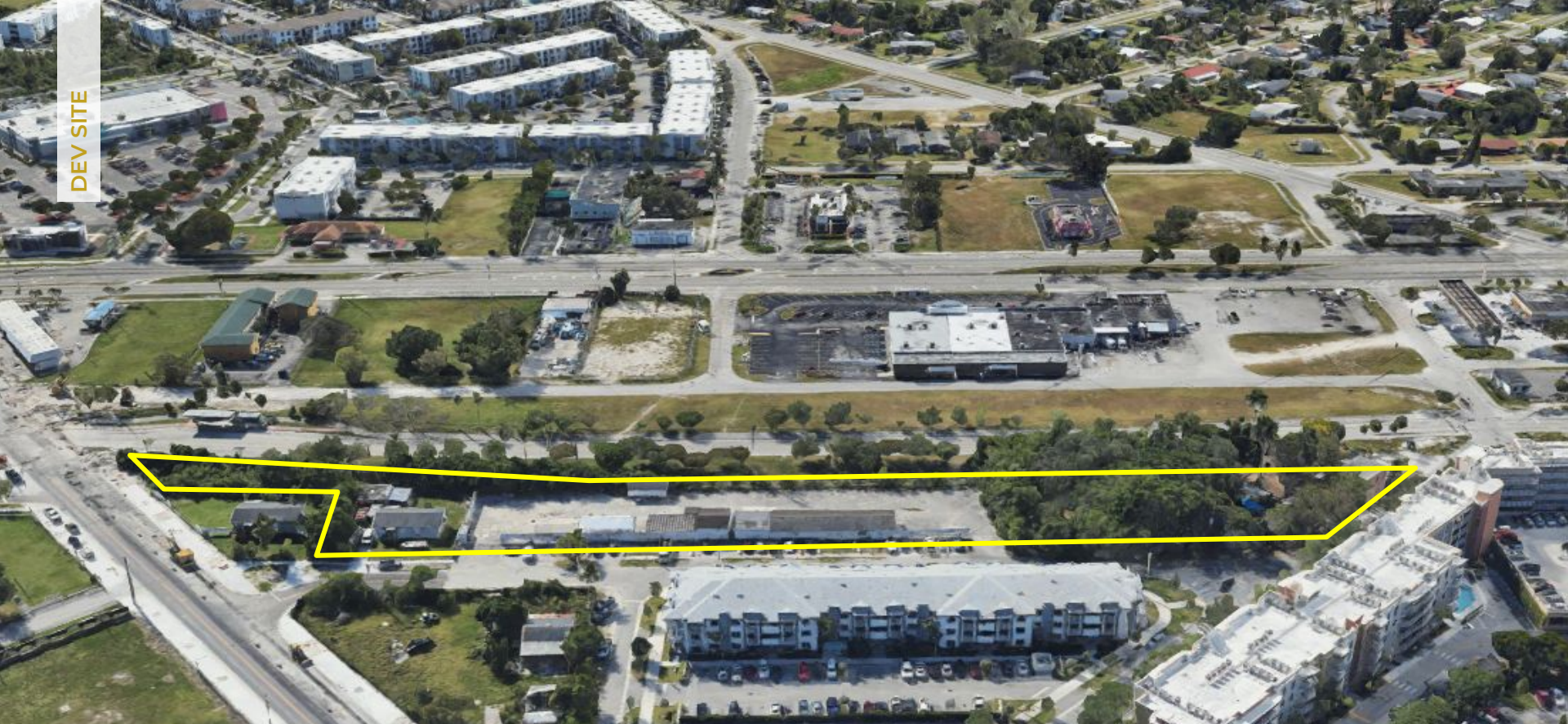


DEV SITE

Miami-Dade County
**SMART
PROGRAM**



DEV SITE





The **South-Dade TransitWay** is Miami-Dade County's Bus Rapid Transit (BRT) project connecting Dadeland South station to Florida City and Homestead, utilizing dedicated lanes for 100 new electric buses. The project includes 14 modern stations with amenities, a new South Dade Transit Operations Center (SDTOC) for electric bus maintenance and operations, and aims to improve connectivity for South Miami-Dade residents.



Miami-Dade Department of Transportation and Public Works (DTPW) said that while testing of vehicles and gate-enforced intersections is ongoing, 14 new stations along the line have been substantially completed and accepted by the county.

South Dade Transitway is expected to begin service Summer/Fall 2025 county officials confirmed.





① OVERALL NORTHWEST ELEVATION



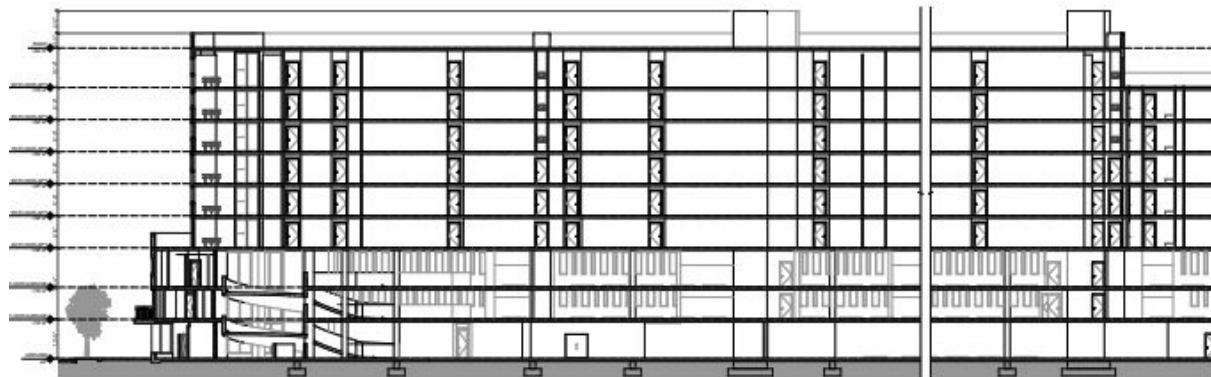
② OVERALL SOUTHEAST ELEVATION



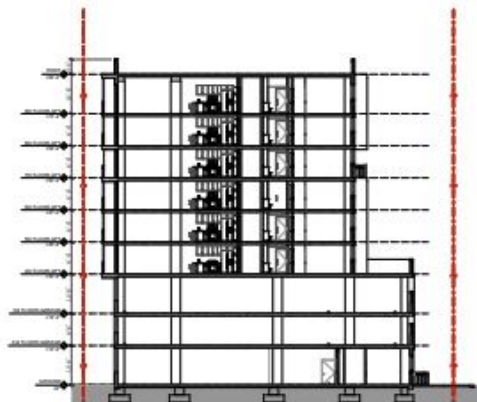
B SOUTHEAST ELEVATION - BUILDING A



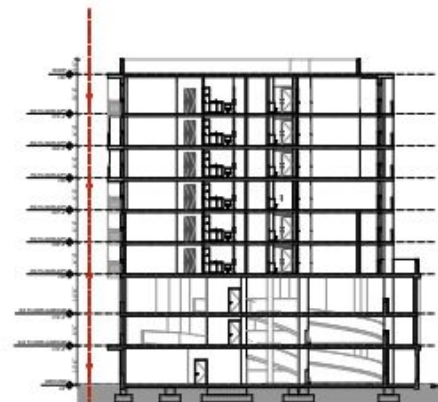
A NORTHWEST ELEVATION - BUILDING A



BUILDING SECTION - BLDG A



③ BUILDING SECTION - BLDG A



② BUILDING SECTION - BLDG A

— ESTD 1995 —

GLOBAL

INVESTMENTS REALTY



Joel Rodriguez
Principal | Broker
Global Investments Realty

joel@glirealty.com
C. 786.285.7739

Procuring broker shall only be entitled to a commission, calculated in accordance with the rates approved by our principal only if such procuring broker executes a brokerage agreement acceptable to us and our principal and the conditions as set forth in the brokerage agreement are fully and unconditionally satisfied. Although all information furnished regarding property for sale, rental, or financing is from sources deemed reliable, such information has not been verified and no express representation is made nor is any to be implied as to the accuracy thereof and it is submitted subject to errors, omissions, change of price, rental or other conditions, prior sale, lease or financing, or withdrawal without notice and to any special conditions imposed by our principal.