

For lease

186,624 SF

1 Imeson Park Blvd.
Bldg. 200
Jacksonville, FL 32218



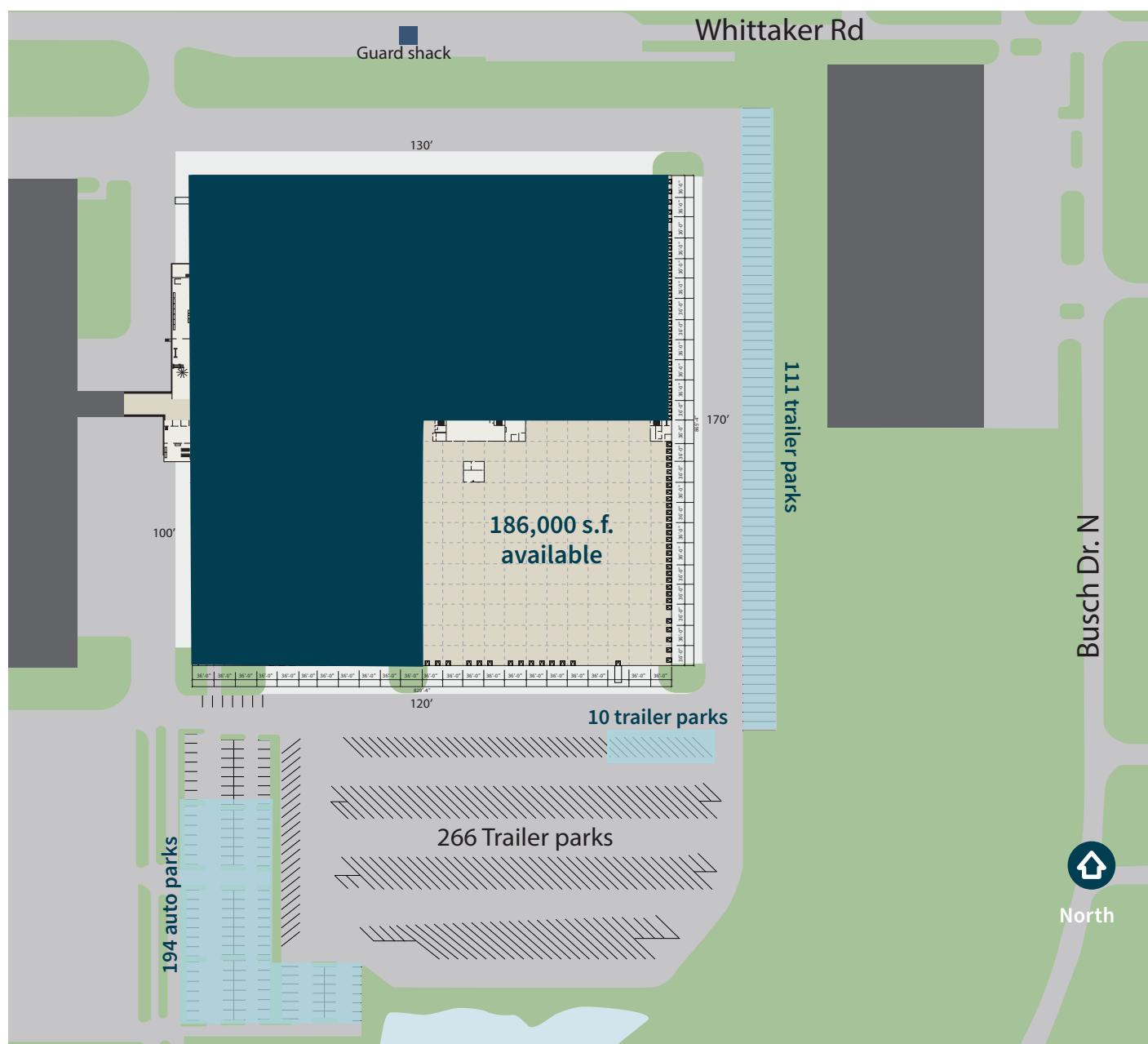
1 Imeson Park Blvd.

Spanning 1,500 acres of master-planned industrial development, Imeson Industrial Park stands as Jacksonville's premier logistics hub, strategically positioned between Jacksonville International Airport, the Port of Jacksonville, and downtown. This central location provides unmatched multimodal connectivity for distribution and manufacturing operations.

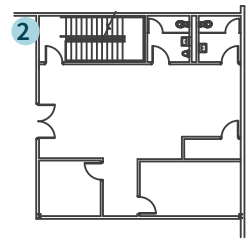
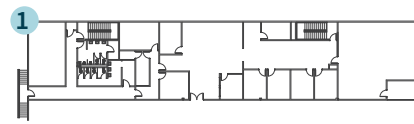
The park offers direct I-95 access with seamless connections to I-295 and I-10, creating efficient pathways to regional and national markets. Distinguished by institutional-quality development standards and substantial critical mass, Imeson Industrial Park has attracted industry leaders including Samsonite, Kaman Aerospace, and Komyo.

Key Building Features

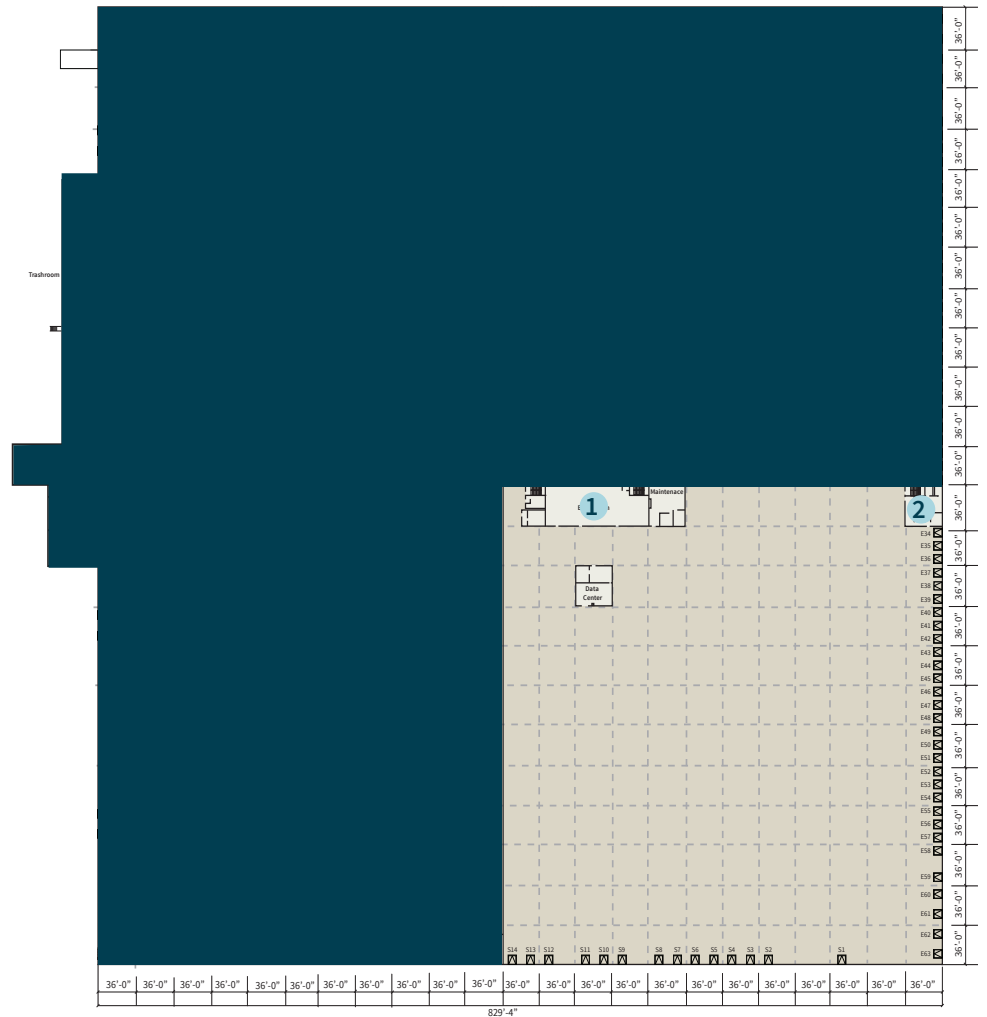
- Prime Jacksonville Northside location with superior transportation access
- Secured truck courts for enhanced operational security
- Fully climate-controlled warehouse environments
- Flexible building configurations with divisible space options
- Florida's advantageous tax structure with no state or personal income tax



Building specs



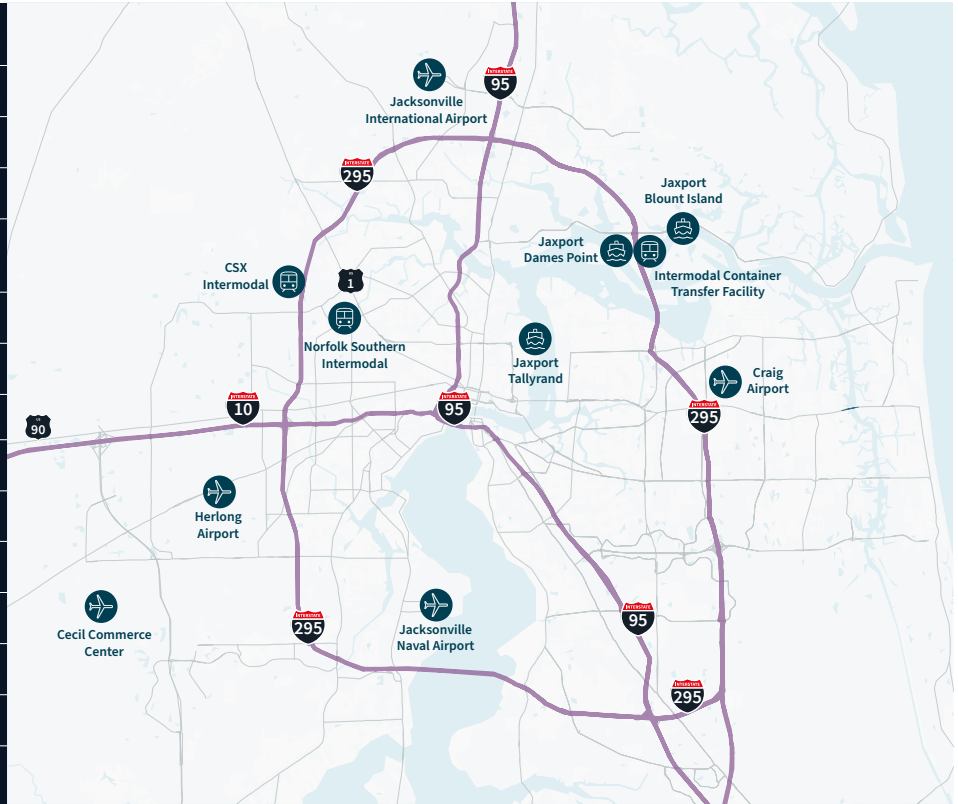
Mezzanine level



Available s.f.	186,000 s.f.	Trailer parks	±111
Office s.f.	±6,000 s.f.	Auto parks	±194
Year built	1990	Truck court	East - 121'6"
Land size	57.92 ac.	Construction	Concrete tilt-up
Clear height	25'-30'	Electrical	Two - 3,000-amp, 480/2777-volt
Column spacing	36' x 36'	Fire protection	ESFR
Dock doors	43 - 9' x 10'	Utilities	JEA- water, sewer & electric
Drive-ins doors	1 - (9' x 10)	HVAC	Can be fully air conditioned
Slab	6" reinforced	Zoning	IL, Light industrial

Strategic location

I-95	1 mile
I-295	2.7 miles
Dames Point	4.5 miles
Downtown Jacksonville	5 miles
Jacksonville International Airport	5.5 miles
Blount Island	5.7 miles
Savannah, GA	142 miles
Orlando, FL	153 miles
Tampa, FL	195 miles
Charleston, SC	241 miles
Atlanta, GA	342 miles
Miami, FL	359 miles
Montgomery, AL	363 miles
Charlotte, NC	386 miles
Baltimore, MD	747 miles



Luke Pope, SIOR
Executive Managing Director
luke.pope@jll.com
+1 904 356 4550

Ross Crabtree
Managing Director
ross.crabtree@jll.com
+1 904 559 3915

Although information has been obtained from sources deemed reliable, neither Owner nor JLL makes any guarantees, warranties or representations, express or implied, as to the completeness or accuracy as to the information contained herein. Any projections, opinions, assumptions or estimates used are for example only. There may be differences between projected and actual results, and those differences may be material. The Property may be withdrawn without notice. Neither Owner nor JLL accepts any liability for any loss or damage suffered by any party resulting from reliance on this information. If the recipient of this information has signed a confidentiality agreement regarding this matter, this information is subject to the terms of that agreement. © 2025 Jones Lang LaSalle IP, Inc. All rights reserved.

Jones Lang LaSalle Brokerage, Inc. A licensed real estate broker