



PORTA
& CO.

For Lease: High Visibility Retail / Office

443 Congress Street, Portland ME

Property Highlights

- 1,871± SF - 5,260± SF of street-level downtown retail / office space.
- Free rent incentive - see broker for details.
- Great opportunity for restaurant, retail and office users to join the bustling Monument Square area.
- Additional finished basement space included.

PORTA & CO. | 30 Milk Street, Second Floor | Portland, ME 04101 | (207)-747-1515

www.portacompany.com

Property Details

443 Congress Street | Portland, ME 04101

PORTA
& CO.

Owner	JJR 443 Congress, LLC
Available Space	1,871± SF - 5,280± SF with additional lower level basement storage.
Building Size	48,768± SF
HVAC	Natural gas heat
Zoning	B3 - Downtown Business
Parking	See broker for details.
Signage	14' to drop ceiling <i>Significant additional height above drop ceiling.</i>
Lease Rate	\$14.00/SF NNN



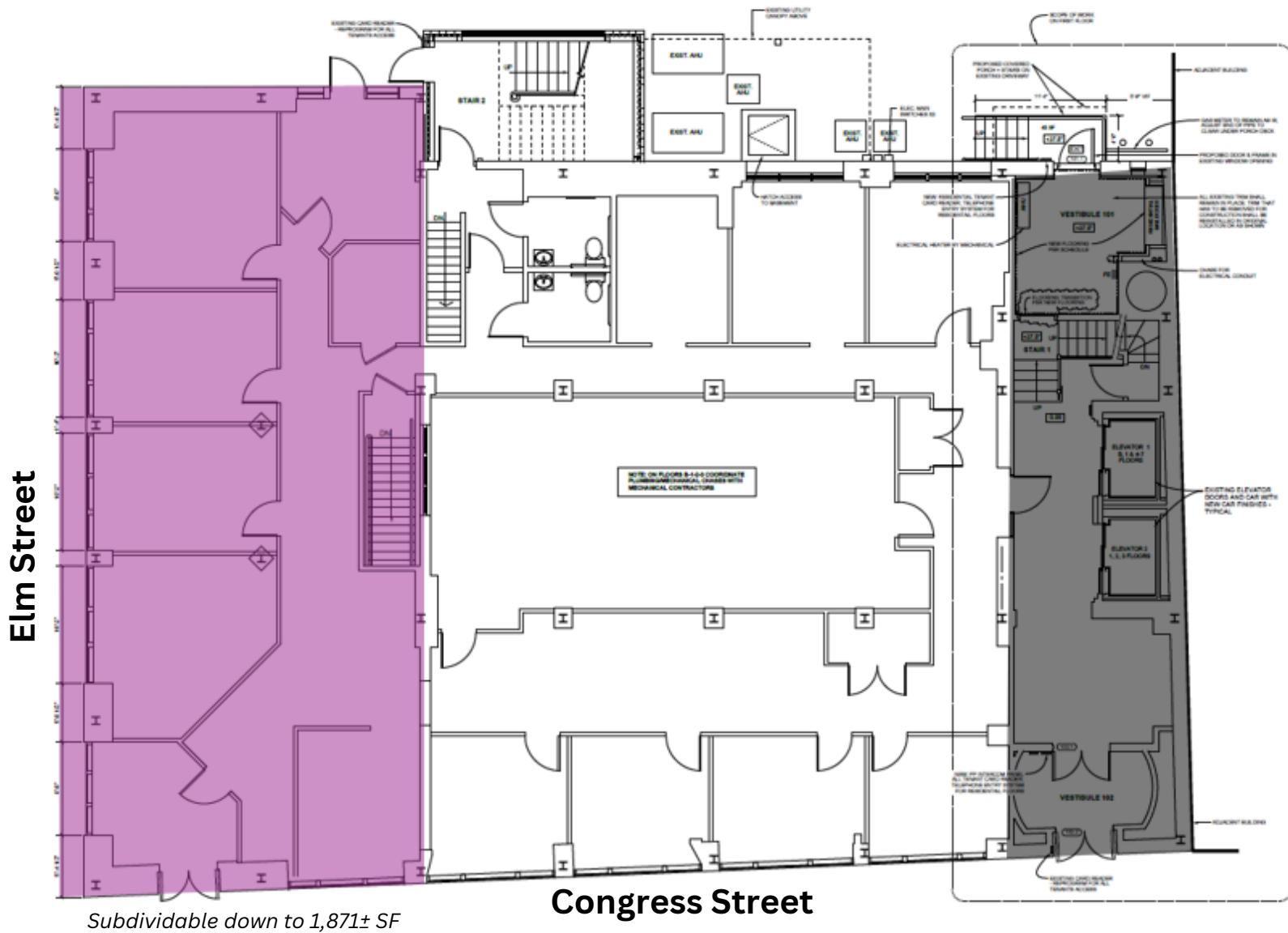
PORTA & CO. | 30 Milk Street, Second Floor | Portland, ME 04101 | (207)-747-1515

www.portacompany.com

Current Floor Plan

443 Congress Street | Portland, ME 04101

PORTA
& CO.



Aerial

443 Congress Street | Portland, ME 04101

PORTA
& CO.



CONTACT US



Anthony Struzziero

Broker

c: 207-329-2335

o: 207-747-1515

astruzziero@portacompany.com

This information has been obtained from sources believed reliable and is intended for informational use only. The information contained herein has not been verified for accuracy or completeness. It is recommended that prospective tenants and buyers conduct their own inspection of the property and verify all information. Any reliance on this information is solely at your own risk. Photos herein are the property of their respective owners. Use of these images without the express written consent of the owner is prohibited.

PORTA & CO. | 30 Milk Street, Second Floor | Portland, ME 04101 | (207)-747-1515

www.portacompany.com