

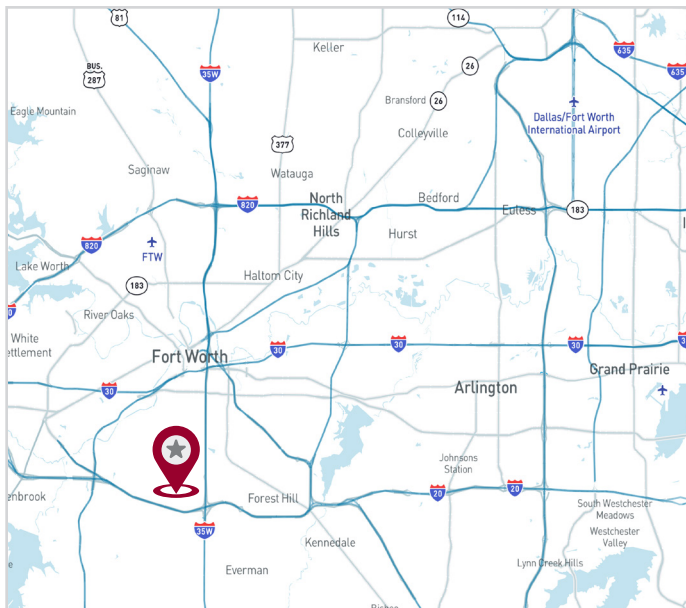
FOR LEASE

±213,546 SF | Warehouse



SOUTHWEST CROSSING LOGISTICS CENTER

5500 S Freeway | Fort Worth, TX 76115



AVAILABILITY HIGHLIGHTS

- 213,546 SF Available:
 - 3,000 SF Main Office
 - 1,400 SF Shipping Office
- Entire property has recently been renovated, including interior of subject space
- Total of 25 Dock and 2 Drive-ins
- 55 Trailer Parks on a Controlled, Secured Site
- Ability to build out a minimum of 8,270 SF of Cooler Space
- White-boxed with LED Lighting
- Heavy Power

FOR LEASING INFORMATION:

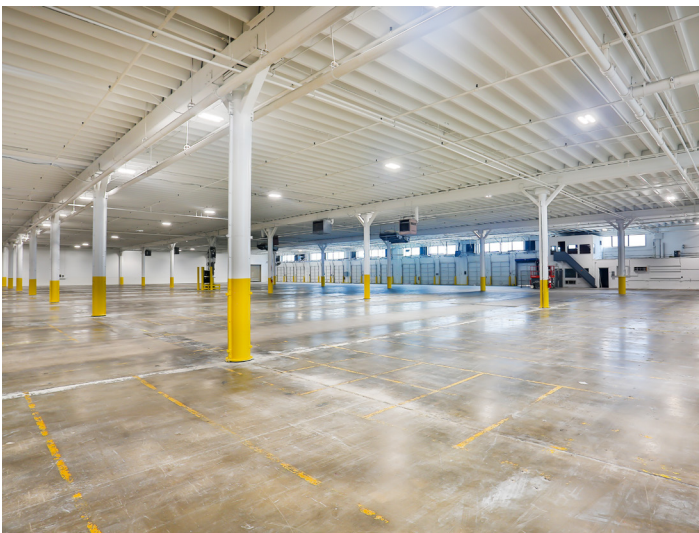
Trey Fricke, SIOR
tfricke@lee-associates.com
972.934.4010

Reid Bassinger, SIOR
rbassinger@lee-associates.com
972.934.4013

Becky Thompson
bthompson@lee-associates.com
972.934.4019

±213,546 SF WAREHOUSE

FOR LEASE



FOR LEASING INFORMATION:

Trey Fricke, SIOR
tfricke@lee-associates.com
972.934.4010

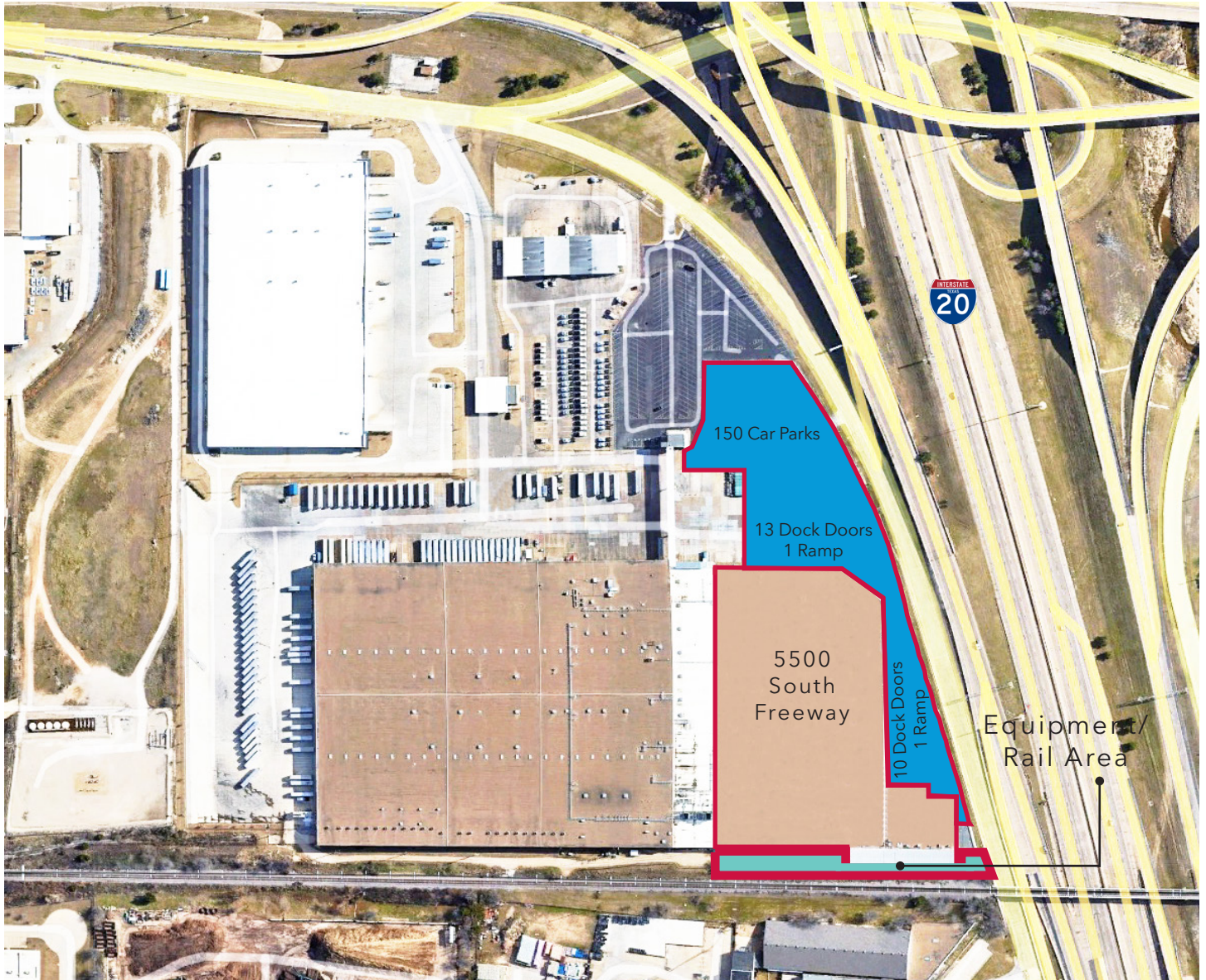
Reid Bassinger, SIOR
rbassinger@lee-associates.com
972.934.4013

Becky Thompson
bthompson@lee-associates.com
972.934.4019

 **LEE & ASSOCIATES**
COMMERCIAL REAL ESTATE SERVICES

±213,546 SF WAREHOUSE

FOR LEASE



FOR LEASING INFORMATION:

Trey Fricke, SIOR
tfricke@lee-associates.com
972.934.4010

Reid Bassinger, SIOR
rbassinger@lee-associates.com
972.934.4013

Becky Thompson
bthompson@lee-associates.com
972.934.4019

**LEE &
ASSOCIATES**
COMMERCIAL REAL ESTATE SERVICES

±213,546 SF WAREHOUSE

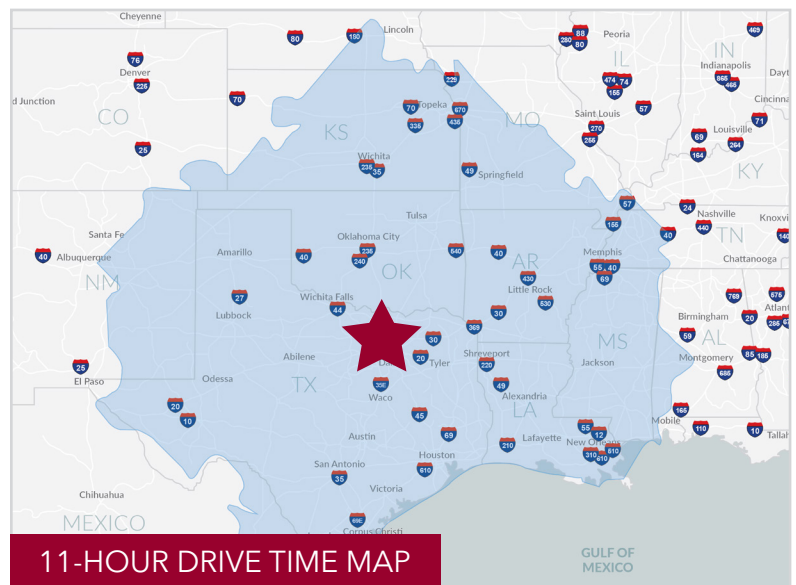
FOR LEASE

FLOOR PLAN



LOCATION HIGHLIGHTS

- Endcap with Freeway Visibility and Highway Signage
- 4-Lane Street Frontage
- Immediate access to I-35W and I-20
- There is a laborshed of over 1.3M people (working age) within a 30 minute drive of the site



11-HOUR DRIVE TIME MAP

All information furnished regarding property for sale, rental or financing is from sources deemed reliable, but no warranty or representation is made to the accuracy thereof and same is submitted to errors, omissions, change of price, rental or other conditions prior to sale, lease or financing or withdrawal without notice. No liability of any kind is to be imposed on the broker herein.

FOR LEASING INFORMATION:

Trey Fricke, SIOR
tfricke@lee-associates.com
972.934.4010

Reid Bassinger, SIOR
rbassinger@lee-associates.com
972.934.4013

Becky Thompson
bthompson@lee-associates.com
972.934.4019

LEE & ASSOCIATES
COMMERCIAL REAL ESTATE SERVICES