

**AVISON
YOUNG**

For Lease

**1470 Columbia Street
North Vancouver, BC**



8,655 sf free-standing industrial building directly west of the Iron Works Memorial Bridge/Trans-Canada Highway in North Vancouver

Stuart Wright*, Senior Vice President
604 647 5097
stuart.wright@avisonyoung.com
**Stuart Wright Personal Real Estate Corporation*

Struan Saddler*, Principal
604 647 5077
struan.saddler@avisonyoung.com
**Struan Saddler Personal Real Estate Corporation*

Free-standing industrial building for lease

1470 Columbia Street
North Vancouver, BC



Property details

AVAILABLE SPACE

Ground Floor	5,361 sf*
Second Floor Office & Mezzanine	3,294 sf*
Total	8,655 sf*

ZONING

EZ-1 – Employment Zone (Industrial)

YEAR BUILT

1973

ASKING LEASE RATE

Please contact agents

ADDITIONAL RENT

\$5.91 psf, per annum (to be confirmed)

POSSESSION

30 days' notice

LOADING ACCESS

Two (2) front grade loading doors
(12' W x 9' H & 11' W x 8' H)*

One (1) rear grade loading door
(8' W x 7' H)*

CEILING HEIGHT

Warehouse: 18' clear*
Front office: 8' clear*

*Tenant to confirm all measurements and numbers







Opportunity

Avison Young is pleased to present the opportunity to lease a 8,655 sf well-maintained free-standing industrial building. This property has an ideal layout for industrial users with its front and rear grade access loading doors, ample parking, and quick access to Lynnterm Terminal, CN Railway, and Trans-Canada Highway.

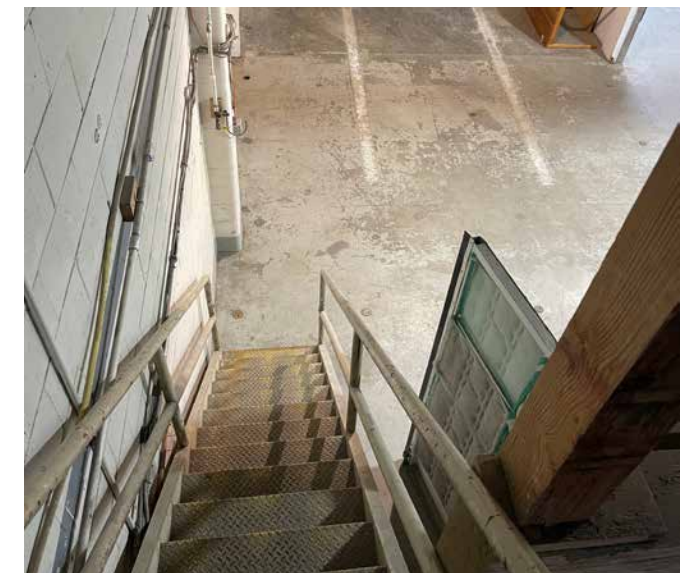
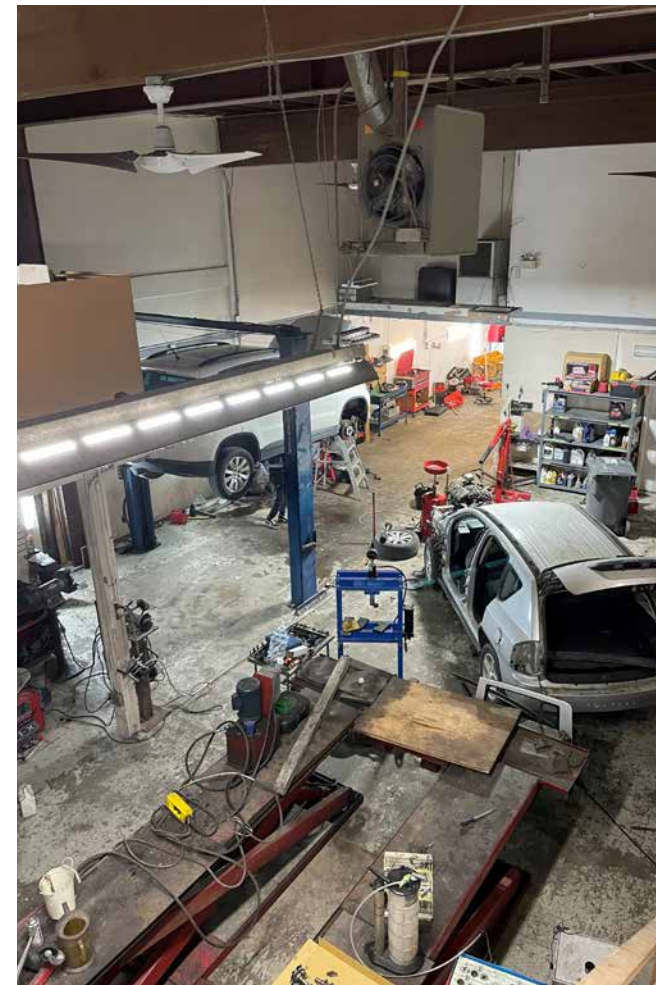
Location

The subject property is in the industrial distribution area of Lynnmour South in North Vancouver on the north side of Columbia Street between Mountain Highway and Harbour Avenue. Being situated three blocks south of the intersection of Main Street and Mountain Highway provides direct access to the Trans Canada Highway, Iron Workers Memorial Bridge, and the Downtown Vancouver Core. These transportation routes connect North Vancouver to the rest of Metro Vancouver and the Fraser Valley. The developing area of Lynnmour South also offers a wide range of amenities including breweries, restaurants, retailers, and national banks.

Investment highlights

-  Grade loading
-  Ample parking
-  Amenity-rich location
-  Mountain and ocean views
-  Desirable access to major transportation routes
-  Previously used as an auto repair shop

[VIEW FLOOR PLANS](#)





Nearby amenities

- | | |
|---------------------------|----------------------------|
| 1. Wildeye Brewing | 9. A&W Canada |
| 2. Bridge Brewing Company | 10. Canadian Tire |
| 3. Toby's Social Pub | 11. Dollarama |
| 4. In Vacanza Pastificio | 12. BMO Bank of Montreal |
| 5. Tour De Feast | 13. Vancity |
| 6. Freshii | 14. Petro-Canada |
| 7. Tim Hortons | 15. Truck Rental at U-Haul |
| 8. Wendy's | |

Drive times

Trans-Canada Hwy	2 mins
Iron Workers Memorial Bridge	2 mins
Downtown Vancouver	15 mins
Lonsdale Quay Seabus Terminal	10 mins
YVR Airport	30 mins

Contact for more information

Stuart Wright*, Senior Vice President
 604 647 5097
 stuart.wright@avisonyoung.com
 *Stuart Wright Personal Real Estate Corporation

Struan Saddler*, Principal
 604 647 5077
 struan.saddler@avisonyoung.com
 *Struan Saddler Personal Real Estate Corporation

#2900-1055 West Georgia Street
 P.O. Box 11109 Royal Centre
 Vancouver, BC V6E 3P3, Canada

avisonyoung.ca



© 2023 Avison Young. All rights reserved. E. & O.E.: The information contained herein was obtained from sources that we deem reliable and, while thought to be correct, is not guaranteed by Avison Young Commercial Real Estate Services, LP ("Avison Young").