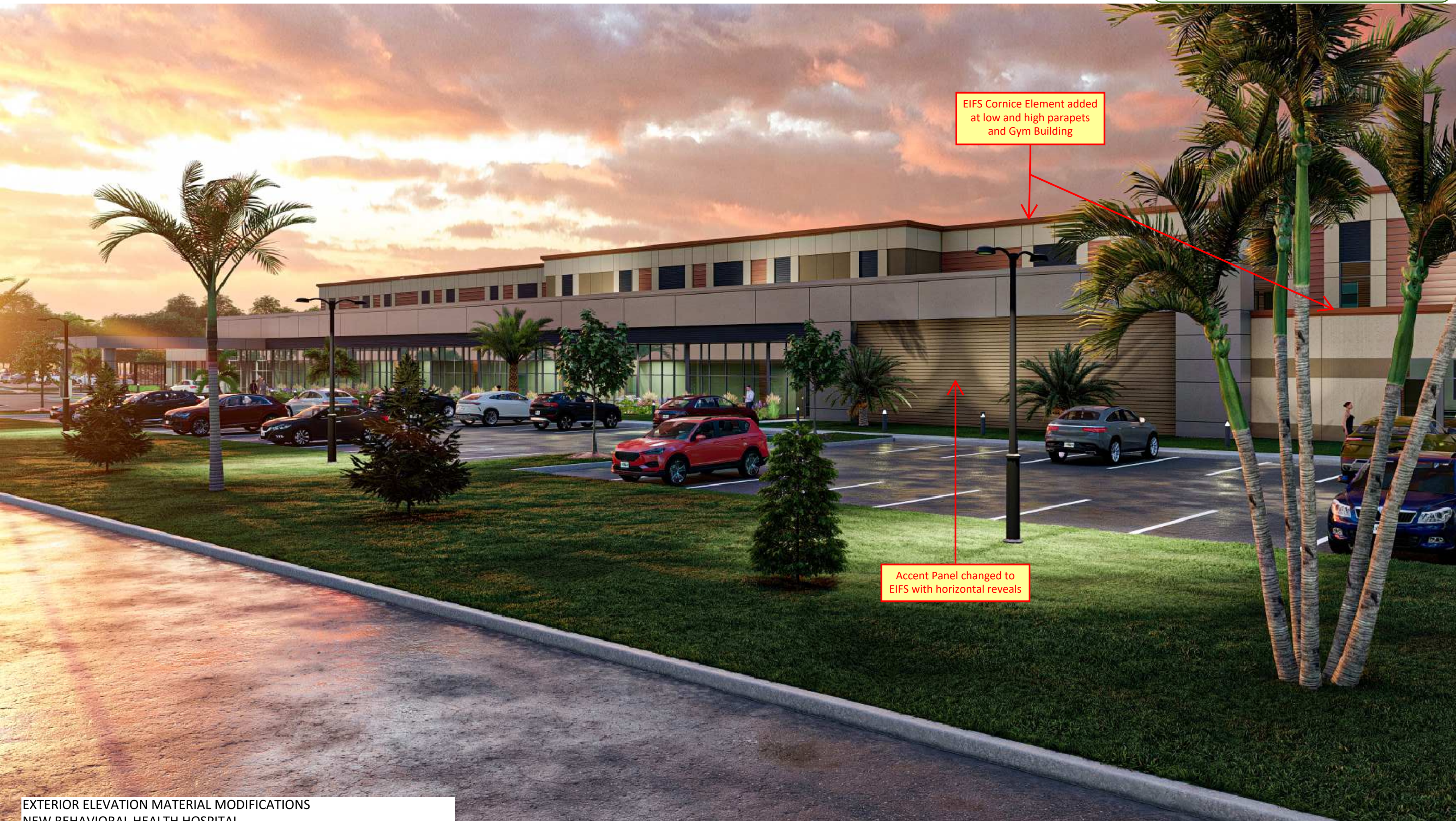




EIFS Cornice Element added at low and high parapets and Gym Building

Accent Panel changed to EIFS with horizontal reveals



EIFS Cornice Element added at low and high parapets and Gym Building

Accent Panel changed to EIFS with horizontal reveals

**APPROVED**  
By Carl Bengel at 12:49 pm, Apr 14, 2023

NOVENARY	
OPAL	
SLATE	
SAND	
OCHRE	
CLAY	
NOVENARY SPECS	AWP 1818
DIMENSIONS (ACTUAL MM)	17-7/8" H x 71-9/16" L (455MM H x 1818MM L)
THICKNESS (ACTUAL MM)	7/8" (21MM)
TILE SIZE	5-3/8" H x 23-1/4" L
WEIGHT (LBS. PER PANEL)	47.84
EXPOSED COVERAGE (SQ. FT. PER PANEL)	8.88 SQ. FT.
PACKAGING (PIECES PER PACK)	2 [17.76 SQ. FT.]

- LEGEND OF EXTERIOR MATERIALS**
- A** Nichiha "Clay" Siding Panels
  - B** EIFS Color 1
  - C** EIFS Color 2
  - D** EIFS Accent Area with Horizontal Reveals
  - E** EIFS Cornice - Color to match Nichiha "Clay" Siding Panels
  - F** Metal Panel Front Accent - Clear Anodized Finish
  - G** Stacked Stone Panel Stairwell Accent

