

Vacant Land Available

320-326 Elizabeth Avenue, Elizabeth, NJ 07206

PROPERTY SUMMARY



PROPERTY DESCRIPTION

Vacant land available for sale or lease.

PROPERTY HIGHLIGHTS

- Property taxes \$8,863
- Zoned C2
- Previously approved for ±4,000 SF building
- Not in a flood zone
- Property is available for sale or lease

LOCATION DESCRIPTION

Located on Elizabeth Avenue in close proximity to NJ Turnpike, Routes 1 & 9, Newark Airport, and Elizabethport.

OFFERING SUMMARY

SALE PRICE:	\$2,000,000
LEASE RATE:	\$7,500.00 per month (NNN)
AVAILABLE SF:	±0.27 Acres
LOT SIZE:	±0.27 Acres

Brian Murphy | O: 732.623.2156 | C: 732.539.3098 | murphy@sitarcompany.com

VACANT LAND FOR SALE / LEASE

Vacant Land Available

320-326 Elizabeth Avenue, Elizabeth, NJ 07206

sitar
Realty Company

Worldwide Real Estate Services Since 1978

ADDITIONAL PHOTOS



Brian Murphy | O: 732.623.2156 | C: 732.539.3098 | murphy@sitarcompany.com

TCN
WORLDWIDE
REAL ESTATE SERVICES

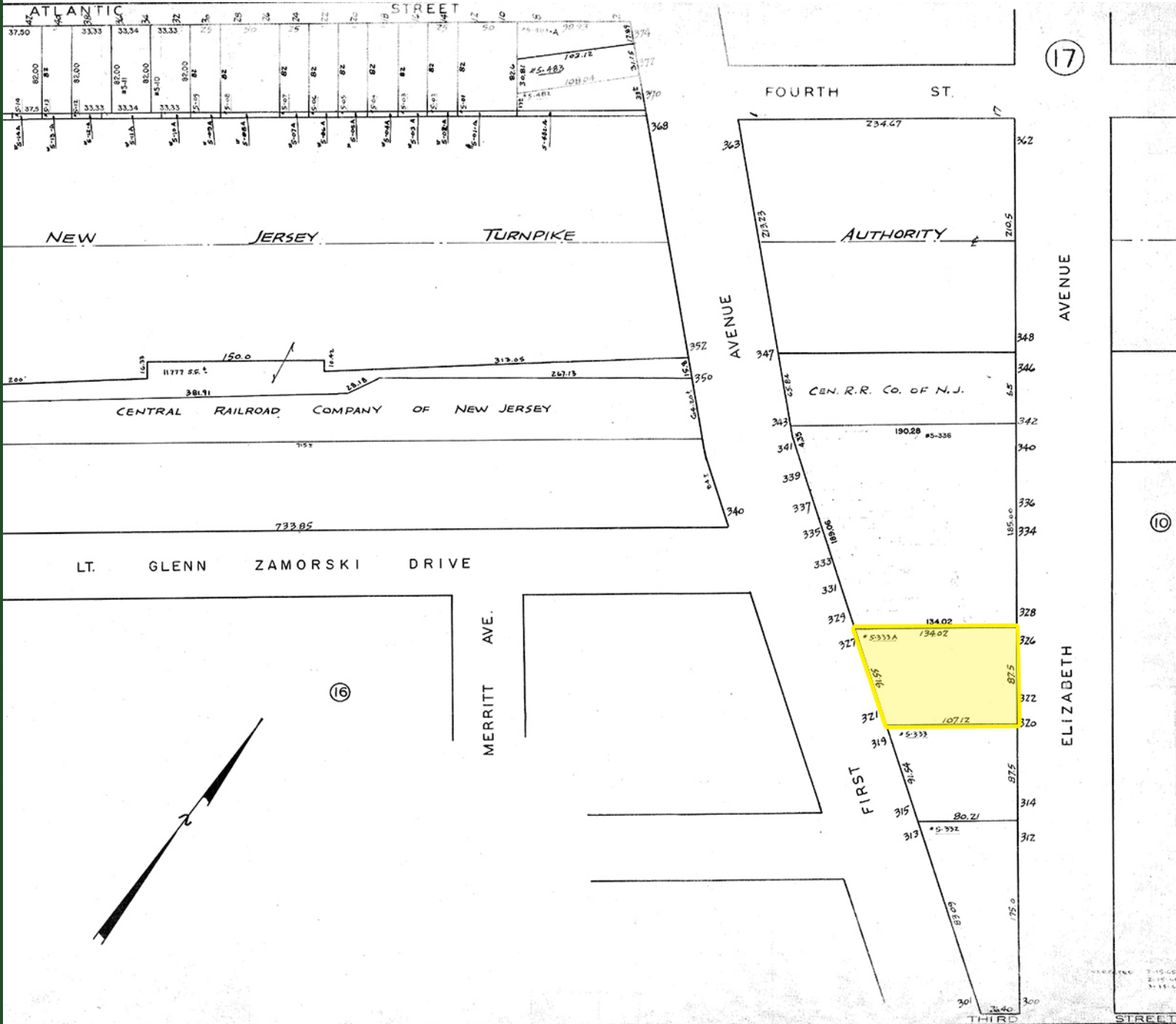
ALL INFORMATION FURNISHED REGARDING PROPERTY FOR SALE, RENTAL OR FINANCING IS FROM SOURCES DEEMED RELIABLE, BUT NO WARRANTY OR REPRESENTATION IS MADE AS TO THE ACCURACY THEREOF AND SAME IS SUBMITTED SUBJECT TO ERRORS, OMISSIONS, CHANGE OF PRICE, RENTAL OR OTHER CONDITIONS, WITHDRAWAL WITHOUT NOTICE, AND TO ANY SPECIAL LISTING CONDITIONS IMPOSED BY OUR PRINCIPALS.

1481 Oak Tree Road, Iselin, NJ 08830 | 732.283.9000 | sitarcompany.com

Vacant Land Available

320-326 Elizabeth Avenue, Elizabeth, NJ 07206

ADDITIONAL PHOTOS



Brian Murphy | O: 732.623.2156 | C: 732.539.3098 | murphy@sitarcompany.com

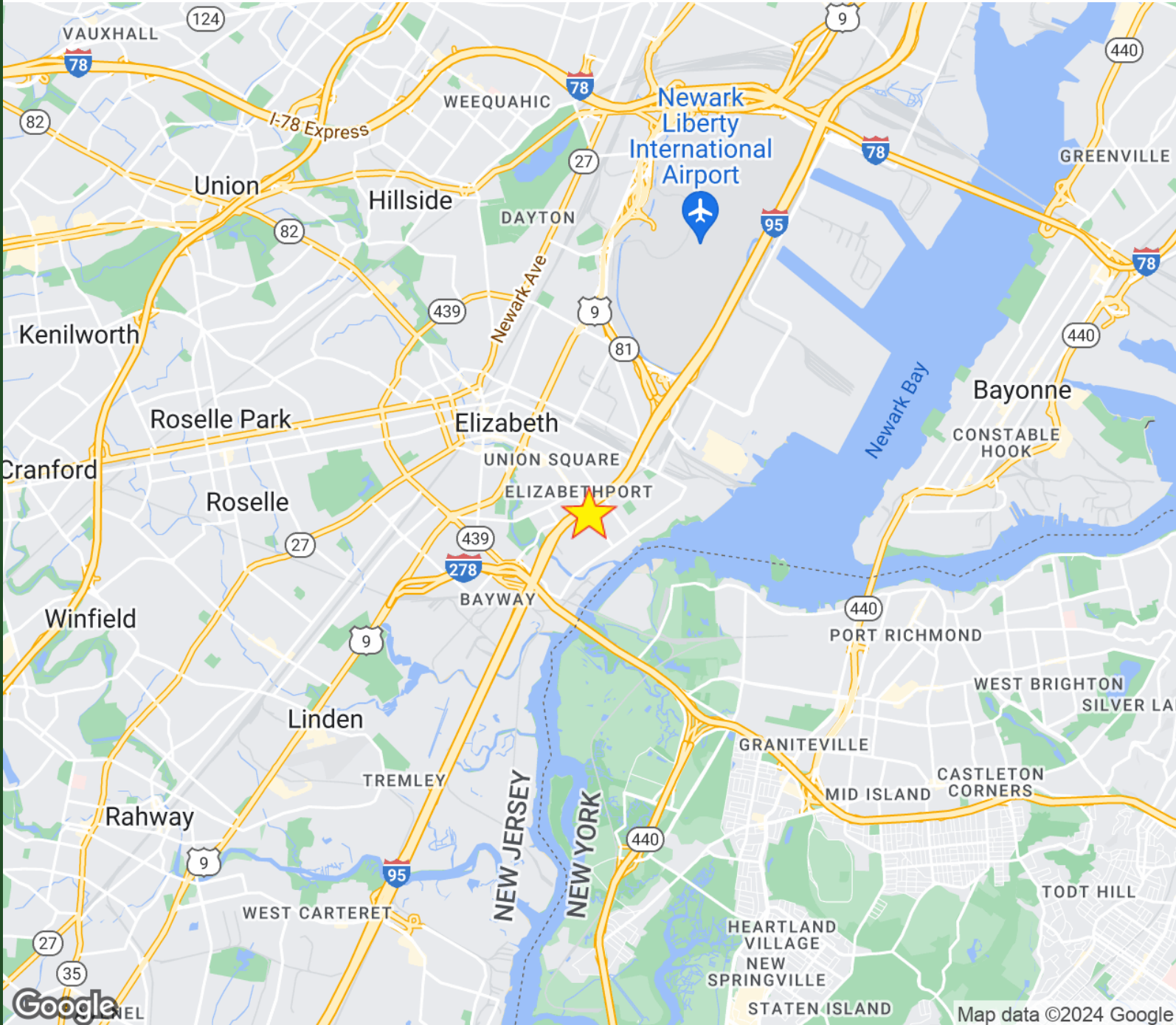


ALL INFORMATION FURNISHED REGARDING PROPERTY FOR SALE, RENTAL OR FINANCING IS FROM SOURCES DEEMED RELIABLE, BUT NO WARRANTY OR REPRESENTATION IS MADE AS TO THE ACCURACY THEREOF AND SAME IS SUBMITTED SUBJECT TO ERRORS, OMISSIONS, CHANGE OF PRICE, RENTAL OR OTHER CONDITIONS, WITHDRAWAL WITHOUT NOTICE, AND TO ANY SPECIAL LISTING CONDITIONS IMPOSED BY OUR PRINCIPALS.

Vacant Land Available

320-326 Elizabeth Avenue, Elizabeth, NJ 07206

LOCATION MAP



Brian Murphy | O: 732.623.2156 | C: 732.539.3098 | murphy@sitarcompany.com



ALL INFORMATION FURNISHED REGARDING PROPERTY FOR SALE, RENTAL OR FINANCING IS FROM SOURCES DEEMED RELIABLE, BUT NO WARRANTY OR REPRESENTATION IS MADE AS TO THE ACCURACY THEREOF AND SAME IS SUBMITTED SUBJECT TO ERRORS, OMISSIONS, CHANGE OF PRICE, RENTAL OR OTHER CONDITIONS, WITHDRAWAL WITHOUT NOTICE, AND TO ANY SPECIAL LISTING CONDITIONS IMPOSED BY OUR PRINCIPALS.

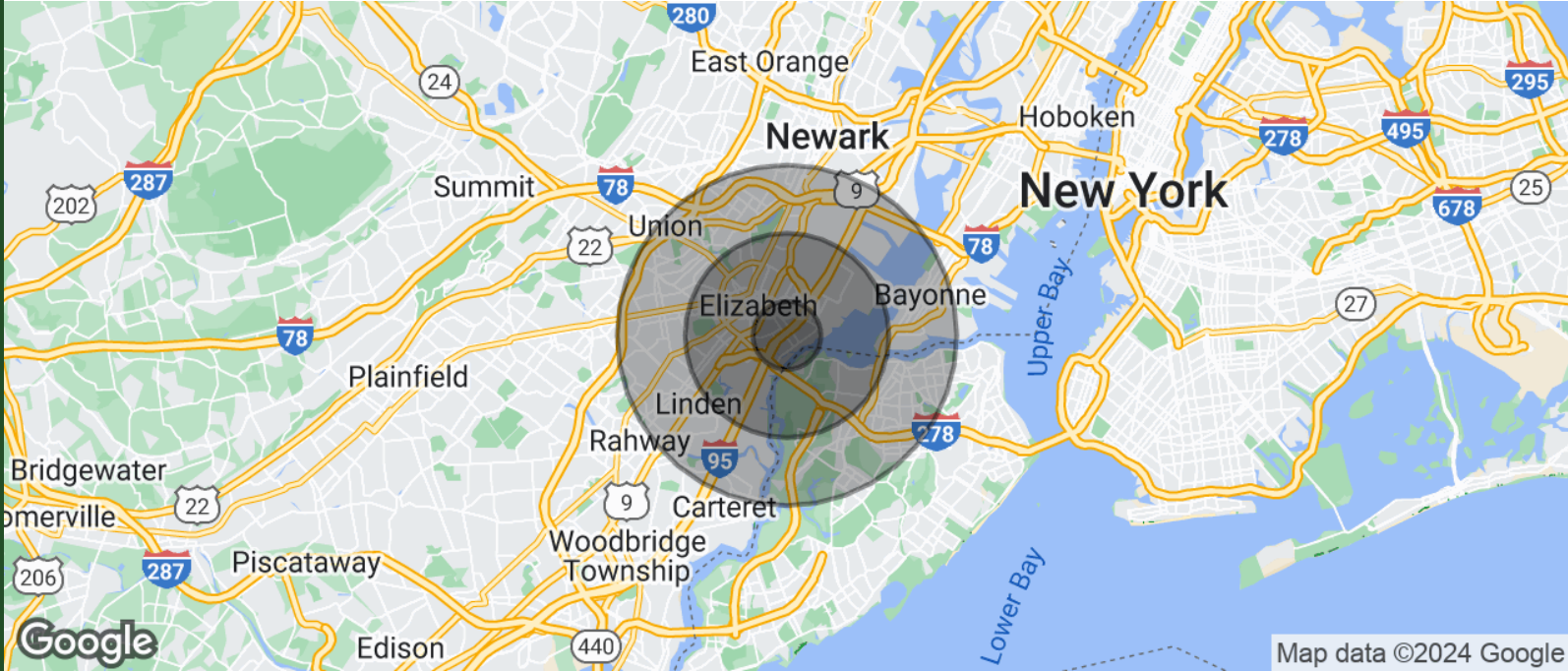
Vacant Land Available

320-326 Elizabeth Avenue, Elizabeth, NJ 07206



Worldwide Real Estate Services Since 1978

DEMOGRAPHICS MAP & REPORT



POPULATION	1 MILE	3 MILES	5 MILES
TOTAL POPULATION	44,782	206,283	586,045
AVERAGE AGE	35	38	39
AVERAGE AGE (MALE)	34	37	38
AVERAGE AGE (FEMALE)	36	38	40

HOUSEHOLDS & INCOME	1 MILE	3 MILES	5 MILES
TOTAL HOUSEHOLDS	13,723	69,322	203,021
# OF PERSONS PER HH	3.3	3	2.9
AVERAGE HH INCOME	\$77,342	\$89,539	\$101,172
AVERAGE HOUSE VALUE	\$400,545	\$458,757	\$483,464

Demographics data derived from AlphaMap

Brian Murphy | O: 732.623.2156 | C: 732.539.3098 | murphy@sitarcompany.com



ALL INFORMATION FURNISHED REGARDING PROPERTY FOR SALE, RENTAL OR FINANCING IS FROM SOURCES DEEMED RELIABLE, BUT NO WARRANTY OR REPRESENTATION IS MADE AS TO THE ACCURACY THEREOF AND SAME IS SUBMITTED SUBJECT TO ERRORS, OMISSIONS, CHANGE OF PRICE, RENTAL OR OTHER CONDITIONS, WITHDRAWAL WITHOUT NOTICE, AND TO ANY SPECIAL LISTING CONDITIONS IMPOSED BY OUR PRINCIPALS.

Vacant Land Available

320-326 Elizabeth Avenue, Elizabeth, NJ 07206



Worldwide Real Estate Services Since 1978

OUR SERVICES

Commercial Brokerage Leasing and Sales

Sitar Realty Company TCN Worldwide is a leader in the commercial brokerage industry of New Jersey. We are full-service brokerage firm and the largest remaining regional independently owned commercial brokerage firm in the state.

Property Management Services

Twin Brook Management, LLC is widely respected in the property management industry and can handle all aspects of property management. We offer full service management or a more limited management approach depending on the client's needs.

Property Tax Consulting

Our real estate tax team can provide an analysis of your property's taxes to determine if you are over-assessed and based on the results of our analysis we can reduce your property tax burden.

Rent Receiver Services

Banks, law firms and courts rely on our company to preserve property values and stabilize properties that are in the process of foreclosure. Our hands-on approach, along with the latest technology allows our clients to feel comfortable and informed throughout the entire process.

Award-Winning Research

In today's real estate market, timely, accurate information can provide a competitive edge that our clients need to succeed. Our database allows us to access information pertaining to over 300 million square feet of office and industrial space and is updated continuously.

Consulting and Advisory Services

Our services range from multivariate financial analysis to interstate site selection. We can help to maximize your company's profits while your focus on your company's core business.

Development

Our development division has been responsible for the development of hundreds of millions of dollars of properties throughout New Jersey. Our firm is known for our high quality projects that are architecturally significant. Due to our years of experience, we can assist you at any level in the development process.

Brian Murphy | O: 732.623.2156 | C: 732.539.3098 | murphy@sitarcompany.com



ALL INFORMATION FURNISHED REGARDING PROPERTY FOR SALE, RENTAL OR FINANCING IS FROM SOURCES DEEMED RELIABLE, BUT NO WARRANTY OR REPRESENTATION IS MADE AS TO THE ACCURACY THEREOF AND SAME IS SUBMITTED SUBJECT TO ERRORS, OMISSIONS, CHANGE OF PRICE, RENTAL OR OTHER CONDITIONS, WITHDRAWAL WITHOUT NOTICE, AND TO ANY SPECIAL LISTING CONDITIONS IMPOSED BY OUR PRINCIPALS.