



The Beach Club

2900 Thomas Ave S
Minneapolis, MN 55416

Office space for lease

Get more
information

Brian Helmken
Executive Vice President
612.351.4138
brian.helmken@avisonyoung.com

Erik Heltne
Senior Associate
612.351.4139
erik.heltne@avisonyoung.com



Property highlights

- Urban Eatery restaurant on site
- Attached ramp parking
- Calhoun Beach Club Fitness Center
- Abundant walkable amenities
- On site professional management
- Direct Access to Midtown Greenway Bike Trail
- Signage opportunities

Offering summary

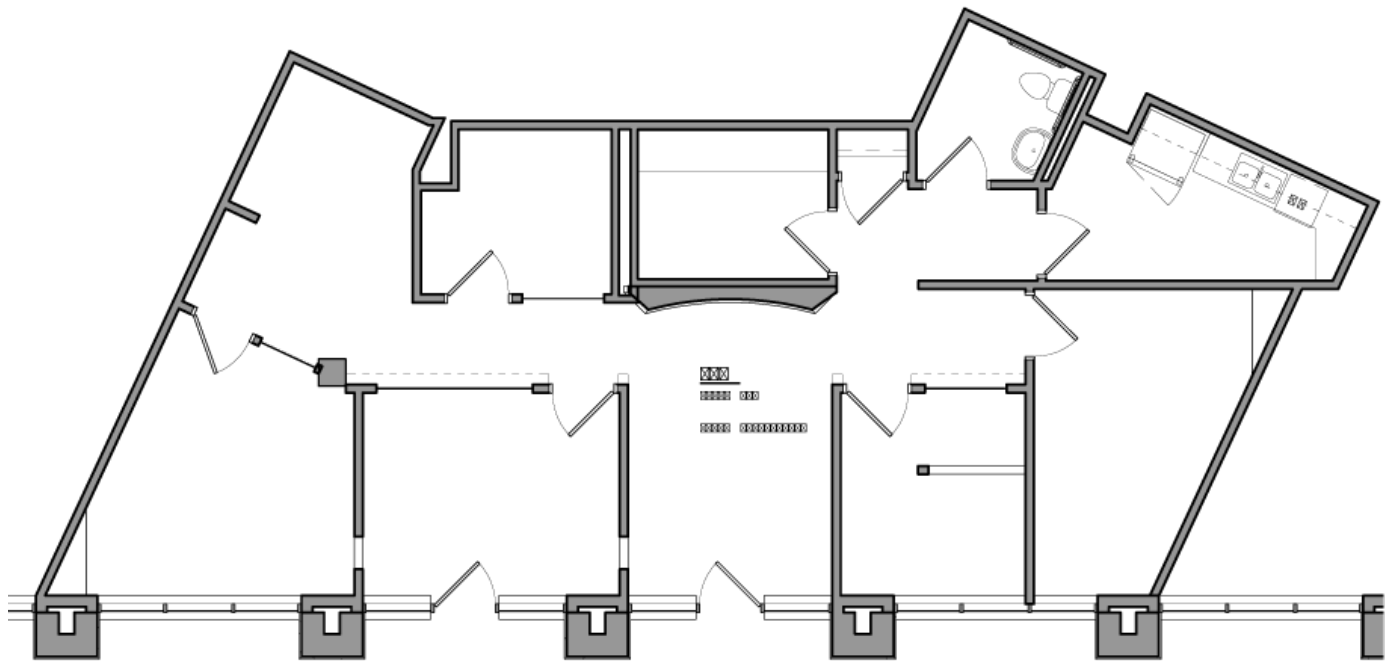
Available Spaces	Suite #1: 1,600 SF; 2nd floor
	Suite #2: 3,900 SF; 2nd floor
	Suite #3: 1,300 SF; main floor
	Suite #4: 700 SF; main floor

Lease rate \$30.00, plus utilities

Year built 1999

Suite 102

The Beach Club
2900 Thomas Ave S
Minneapolis, MN 55416



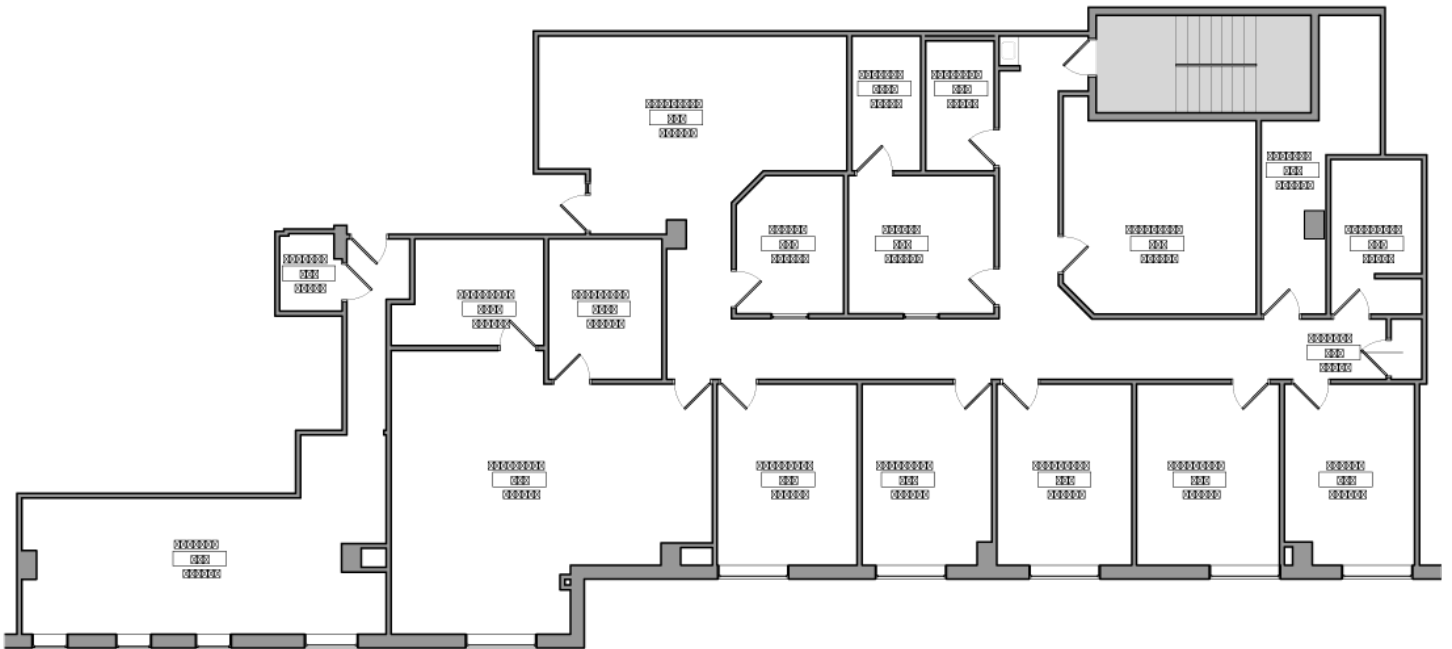
**Get more
information**

Brian Helmken
Executive Vice President
612.351.4138
brian.helmken@avisonyoung.com

Erik Heltne
Senior Associate
612.351.4139
erik.heltne@avisonyoung.com

Suite 310

The Beach Club
2900 Thomas Ave S
Minneapolis, MN 55416



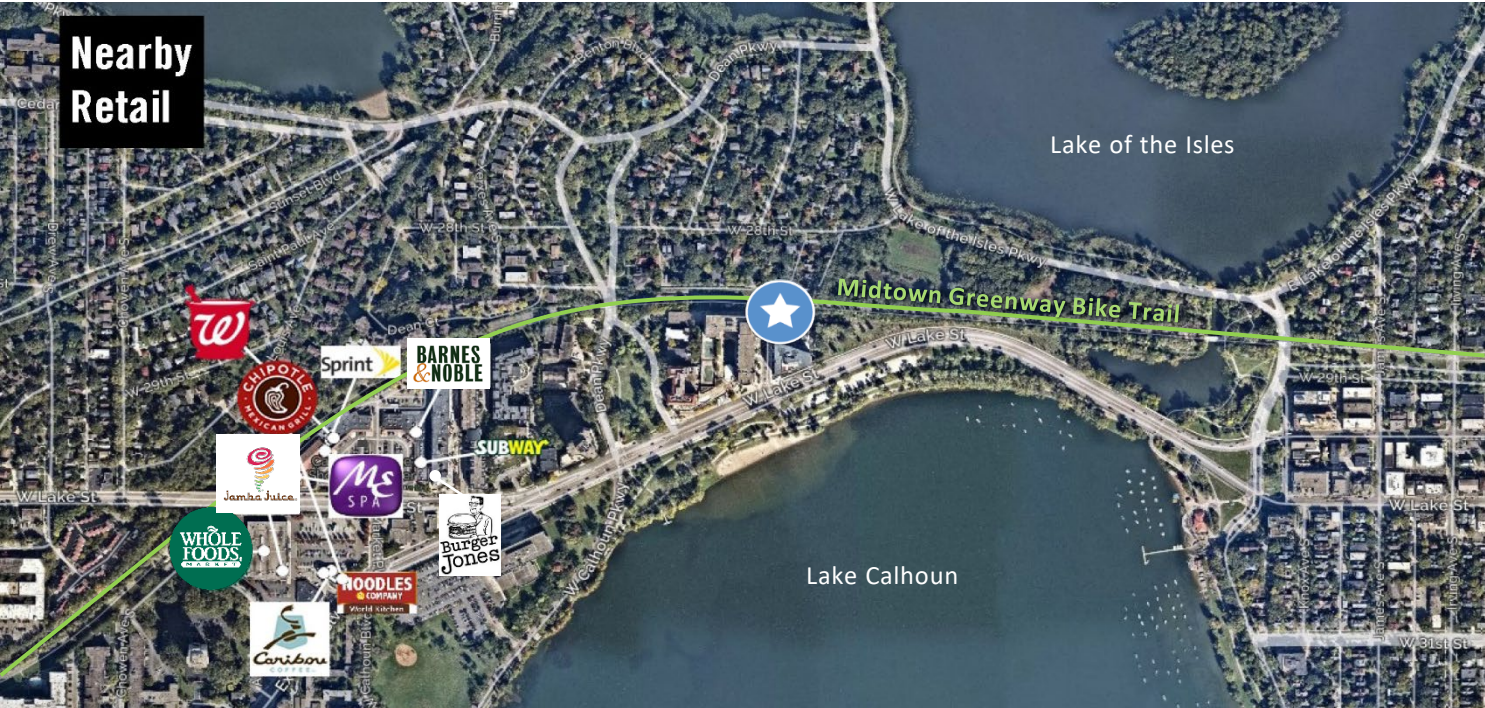
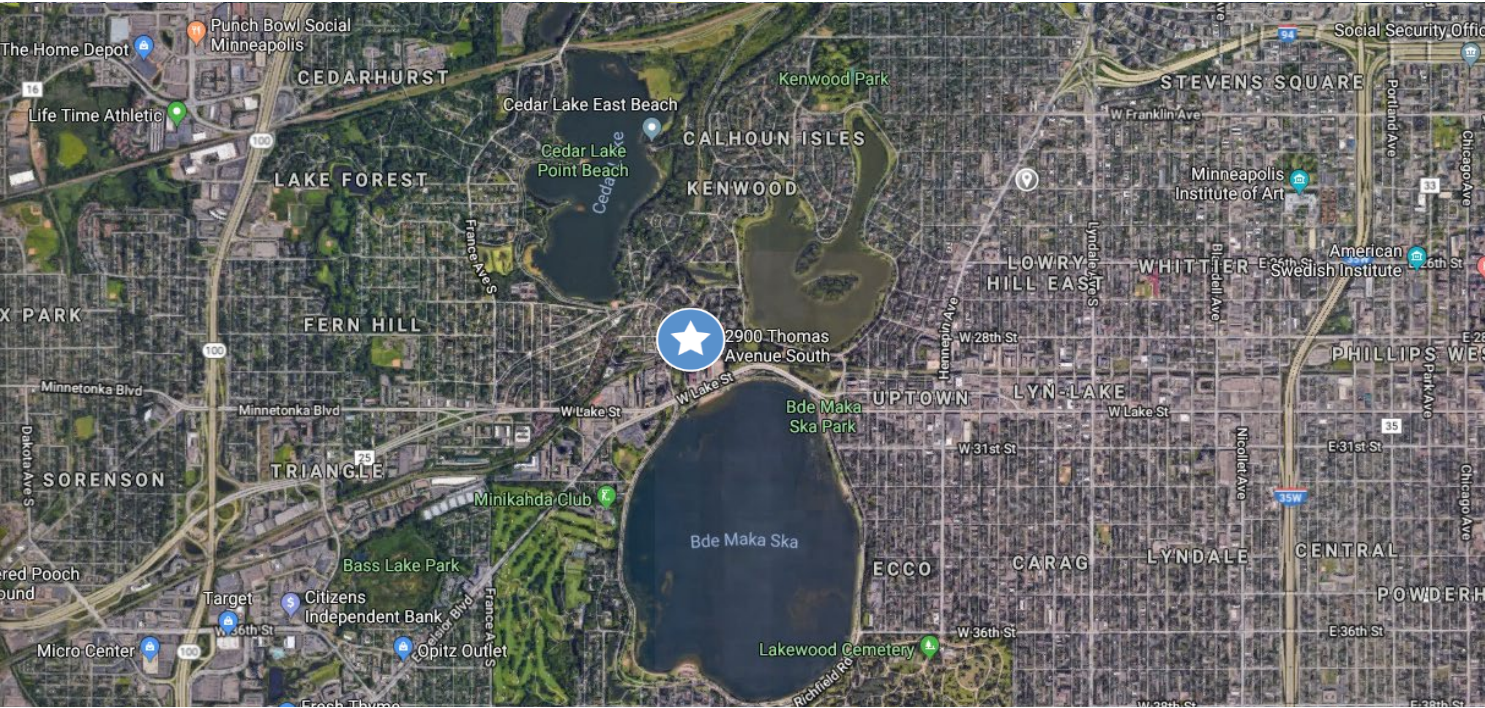
**Get more
information**

Brian Helmken
Executive Vice President
612.351.4138
brian.helmken@avisonyoung.com

Erik Heltne
Senior Associate
612.351.4139
erik.heltne@avisonyoung.com



For lease
The Beach Club
2900 Thomas Ave S
Minneapolis, MN 55416



Get more information

Brian Helmken
Executive Vice President
612.351.4138
brian.helmken@avisonyoung.com

Erik Heltne
Senior Associate
612.351.4139
erik.heltne@avisonyoung.com

This message and any attachments are confidential. If the reader is not the intended recipient, you are hereby notified that any dissemination, distribution or copying of this e-mail is strictly prohibited. If you have received this e-mail in error, please notify the sender immediately by return e-mail. Internet communications cannot be guaranteed to be secure or error free as information could be intercepted, corrupted, lost, arrive late or contain viruses. The sender result of Internet transmission.