

AVAILABLE FOR LEASE

701-703 E. MAIN STREET

Moorestown, NJ

VICTORIA MEDICAL ARTS BUILDING



Property Information

- 20,000± SF, two building office / medical complex
- Suites available for lease from 748 - 1,220± SF
- Easily accessible from Route 38 and I-295
- Close proximity to Centerton Square shopping center featuring numerous retailers and restaurants

Available Spaces

701 E. MAIN STREET

SUITE 4*	748± SF
SUITE 5*	1,220± SF Coming available 6/1/2025
SUITE 9	1,088± SF

* Can be combined for 1,968± SF

703 E. MAIN STREET

SUITE E	1,093± SF
---------	-----------

LEASE RATE

Negotiable

Contact Information:

Julie Kronfeld, SIOR
☎ +1 856 802 6516
✉ julie.kronfeld@naimertz.com

Rebecca Ting, SIOR
☎ +1 609 314 1435
✉ rebecca.ting@naimertz.com

📍 NAI Mertz | 21 Roland Avenue
Mount Laurel, NJ 08054
+1 856 234 9600 | naimertz.com

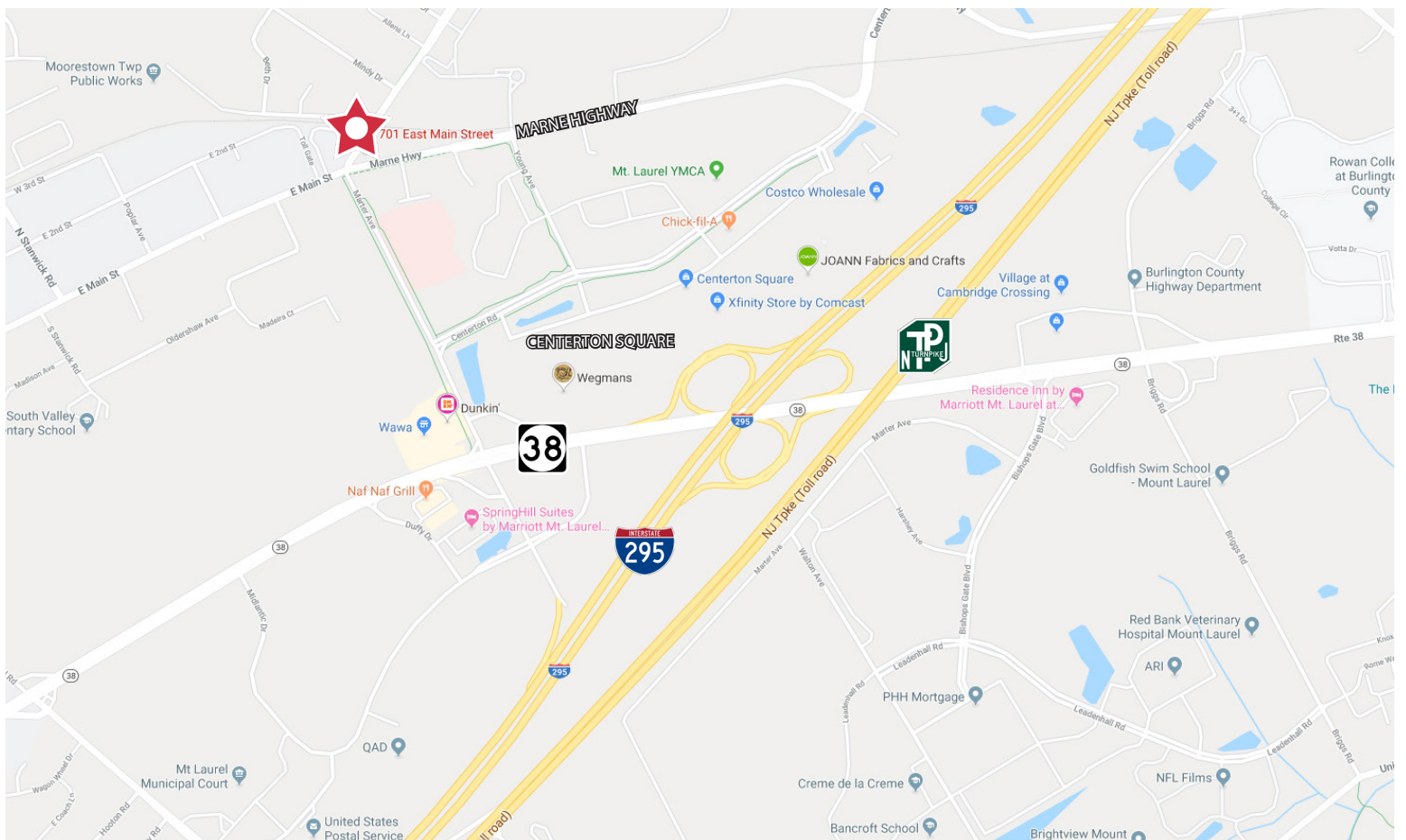
NO WARRANTY OR REPRESENTATION, EXPRESS OR IMPLIED, IS MADE AS TO THE ACCURACY OF THE INFORMATION CONTAINED HEREIN, AND THE SAME IS SUBMITTED SUBJECT TO ERRORS, OMISSIONS, CHANGE OF PRICE, RENTAL OR OTHER CONDITIONS, PRIOR SALE, LEASE OR FINANCING, OR WITHDRAWAL WITHOUT NOTICE, AND OF ANY SPECIAL LISTING CONDITIONS IMPOSED BY OUR PRINCIPALS NO WARRANTIES OR REPRESENTATIONS ARE MADE AS TO THE CONDITION OF THE PROPERTY OR ANY HAZARDS CONTAINED THEREIN ARE ANY TO BE IMPLIED.

NAIMertz

701-703 Main Street | Moorestown, NJ

LOCATION - KEY DISTANCES

Route 38	0.5 mile 2 minutes
Centerton Square	0.5 mile 2 minutes
I-295 (Exit 40)	1.0 mile 3 minutes



701 E. MAIN STREET

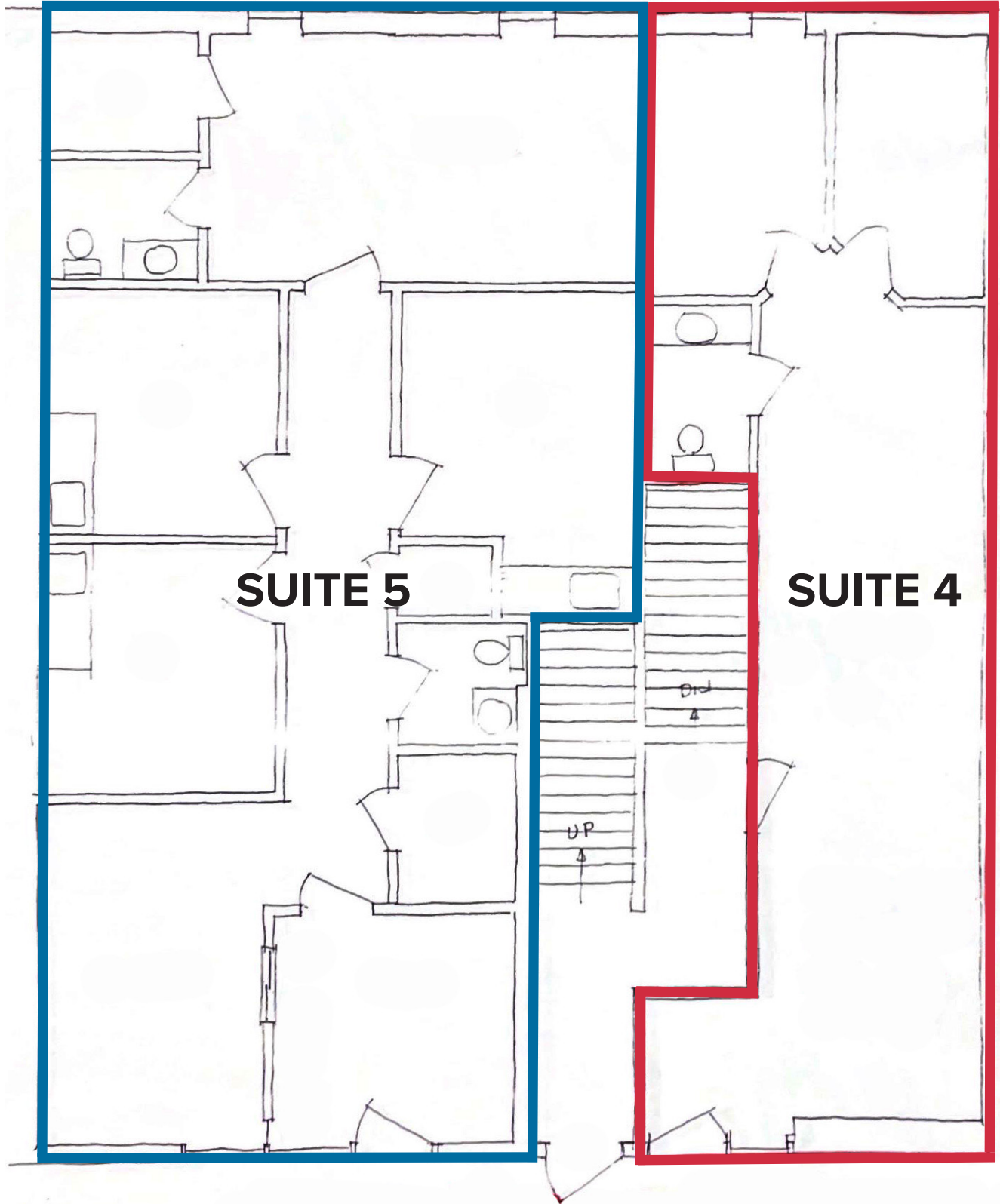
- SUITE 4 748± SF
- SUITE 5 1,220± SF
- SUITE 9 1,088± SF



701 E. MAIN STREET

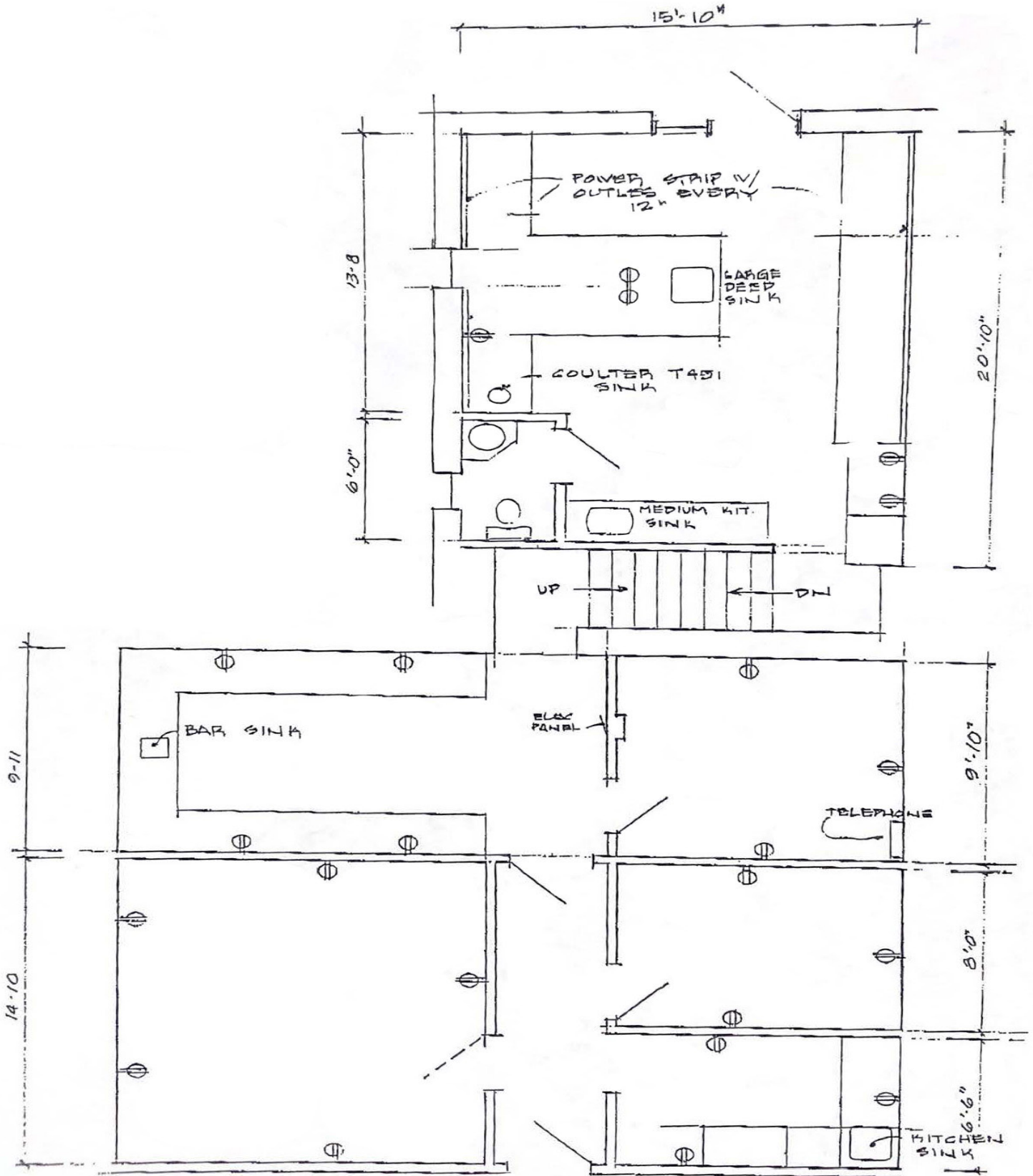
SUITE 4 748± SF

SUITE 5 1,220± SF



701 E. MAIN STREET

SUITE 9 1,088± SF



703 E. MAIN STREET

SUITE E 1,093± SF

