

12882 PIERCE STREET PACOIMA CA 91331

FOR SUBLEASE - 22,584 SF



EXCLUSIVELY LISTED BY:

Eric Seidenglanz

Vice President

d: 818-815-2426

eseidenglanz@naicapital.com

Cal DRE Lic #01975684

NAI Capital - Encino

15821 Ventura Blvd., Suite 320E

Los Angeles, CA 91436

d: 818-905-2400

www.naicapital.com

NAI Capital
COMMERCIAL REAL ESTATE SERVICES, WORLDWIDE

PROPERTY HIGHLIGHTS

12882 PIERCE STREET, PACOIMA CA 91331

Monthly Rent:	\$31,621.55
Monthly Operating Expenses:	\$436.39
Sublease Rate/SF/Type:	\$1.40 / SF MG
Operating Expense /SF:	\$0.02
Unit Size:	22,584
Clear Height:	14'
Loading:	Two (2) Dock High Doors
Power:	400 A : 120/240 V : 3 P (To be confirmed by tenant)
Parking Spaces:	45
Office SF:	1200
Restrooms:	3
To Show	Call Agent



**SUBLEASE
RATE/SF
\$1.40**



**CLEAR
HEIGHT
14'**



**PARKING
SPACES
45**



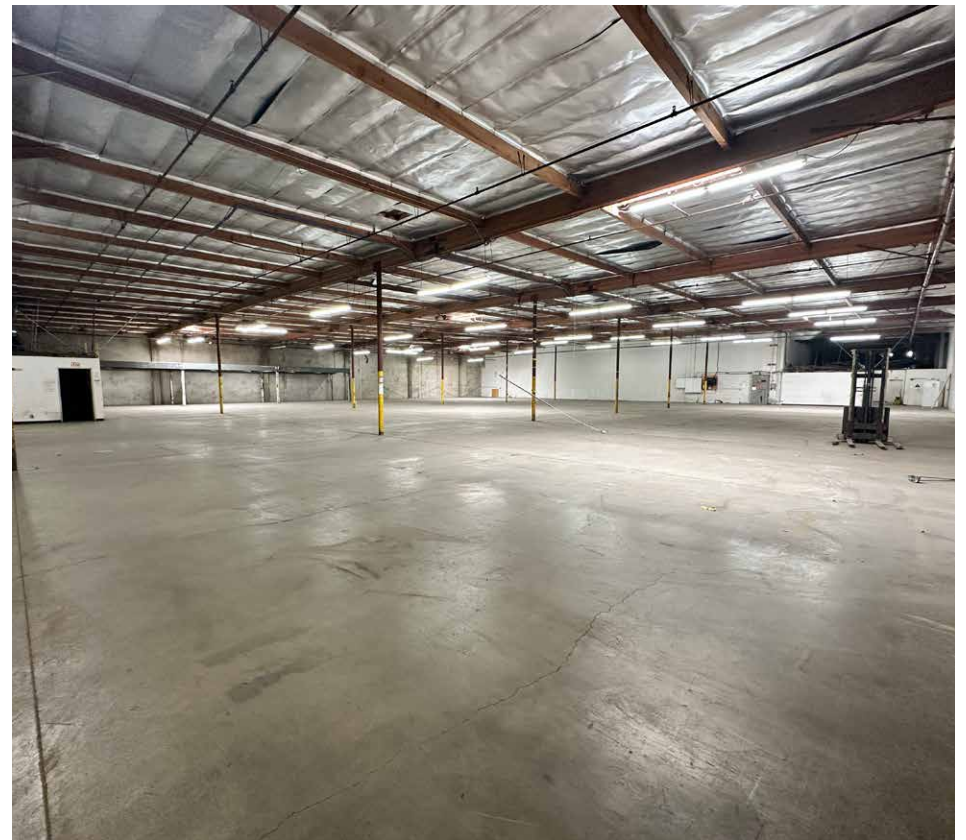
**POWER
400A, 120-240V,
3P**



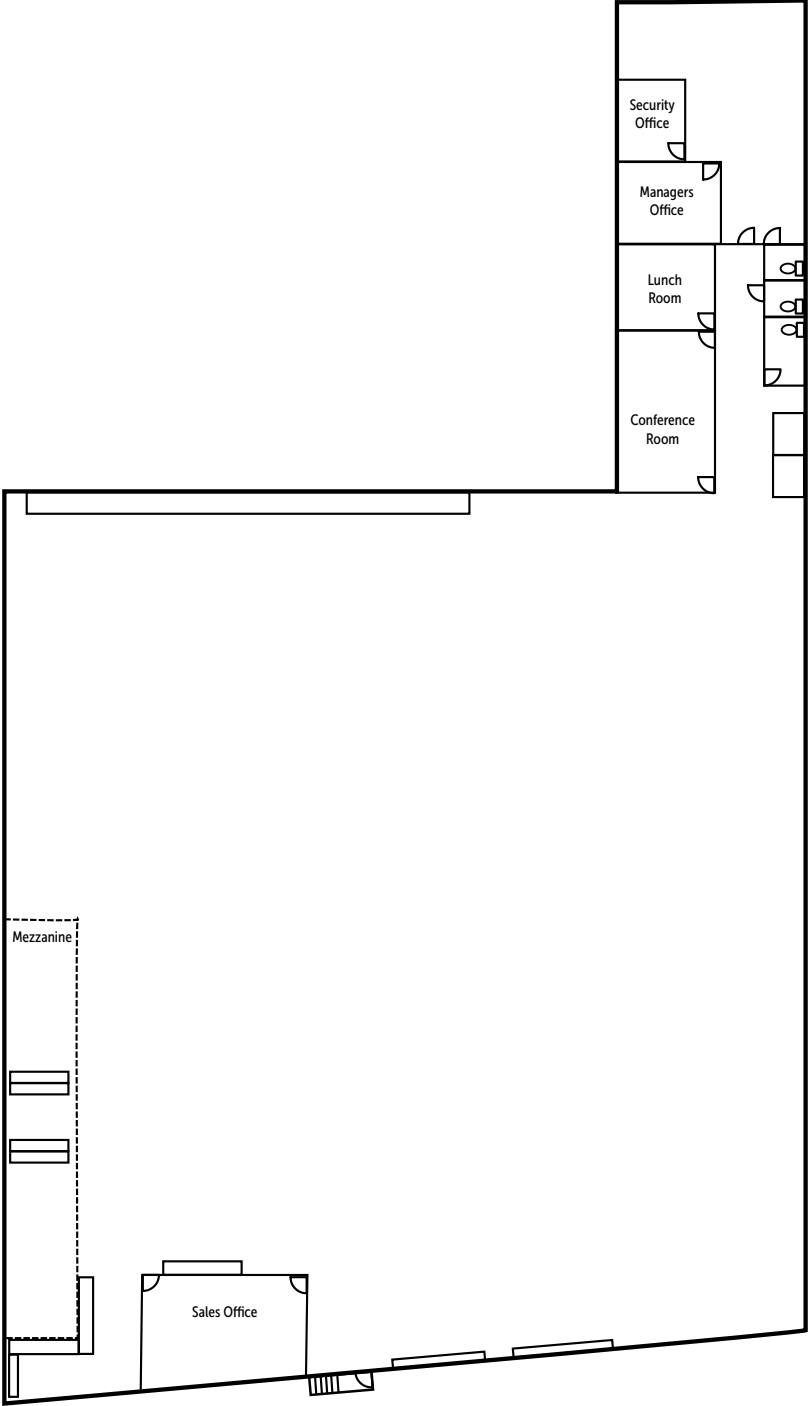
**LOADING
TWO (2) DOCK HIGH DOORS**



PROPERTY PHOTOS



FLOOR PLAN



12882 PIERCE STREET PACOIMA CA 91331

FOR SUBLEASE - 22,584 SF



No warranty, express or implied, is made as to the accuracy of the information contained herein. This information is submitted subject to errors, omissions, change of price, rental or other conditions, withdrawal without notice, and is subject to any special listing conditions imposed by our principals. Cooperating brokers, buyers, tenants and other parties who receive this document should not rely on it, but should use it as a starting point of analysis, and should independently confirm the accuracy of the information contained herein through a due diligence review of the books, records, files and documents that constitute reliable sources of the information described herein. Logos are for identification purposes only and may be trademarks of their respective companies. NAI Capital, Inc. Cal DRE Lic. #02130474.

EXCLUSIVELY LISTED BY:

Eric Seidenglanz

Vice President

d: 818-815-2426

eseidenglanz@naicapital.com

Cal DRE Lic #01975684

NAI Capital - Encino

15821 Ventura Blvd., Suite 320E

Los Angeles, CA 91436

d: 818-905-2400

www.naicapital.com

NAI Capital
COMMERCIAL REAL ESTATE SERVICES, WORLDWIDE