

Office Property For Lease

300 Meridian Place

300 N. Meridian Avenue, Oklahoma City, OK 73107



Property Overview

This multi-tenant office building was built in 1982 and renovated in 2009. The main entry has been refurbished with Venezuelan marble floors, imported chandeliers, and the construction of a security guard desk. Building has on-site security and controlled 24 hour access, as well as, high speed data/communications connectivity. Additionally, all bathrooms have been renovated and updated as well. Twenty-four hour tenant controlled HVAC available.

Details

- Building Size: 79,371 SF
- Year Built: 1982
- Market: Oklahoma City
- Sub Market: South

Newmark Grubb

Levy Strange Beffort

Brad Rice

c. 918-269-8586

brice@newmarklsb.com

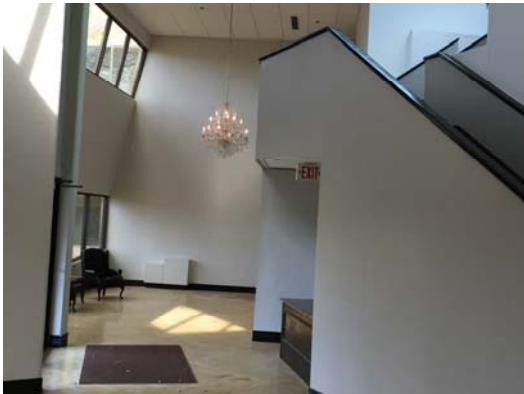
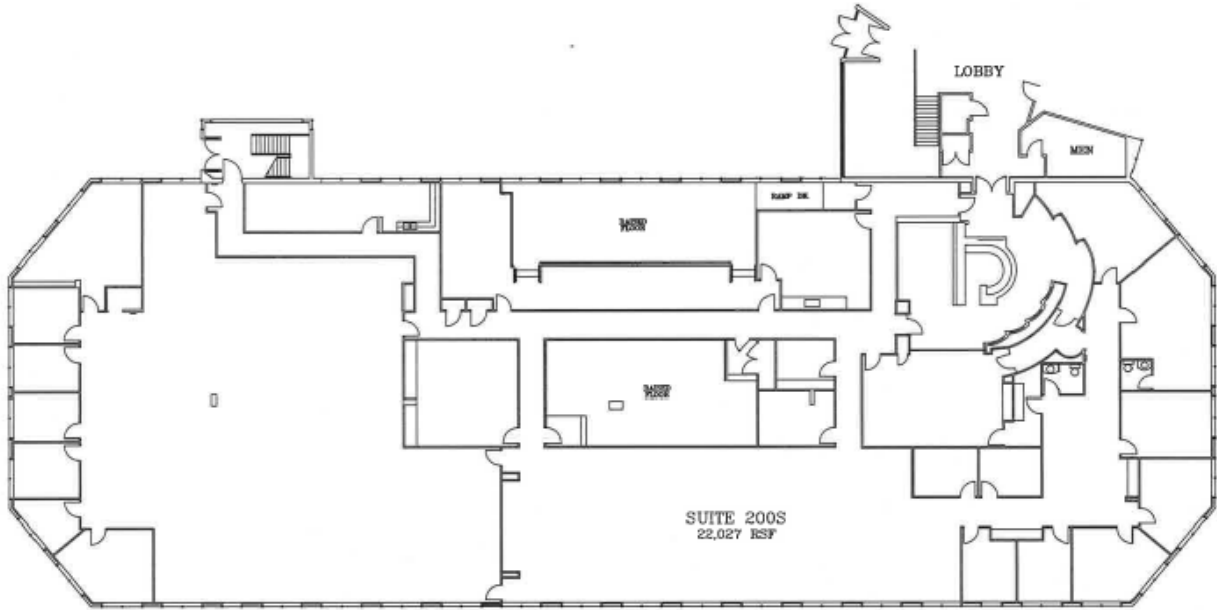
MORE INFORMATION
AVAILABLE ONLINE:

www.newmarklsb.com

Office Property For Lease

300 Meridian Place

300 N. Meridian Avenue, Oklahoma City, OK 73107



Snapshot

North Building	
Suite 200S	22,027 SF
Rental Rate	\$12.00/SF
Lease Type	Full Service Gross
Lease Term	3 - 5 Years

Property Highlights

- Large floor plates for tenants of any size
- On site security
- Controlled building access
- Ample surface parking
- Conveniently located close to I-40 and Will Rogers World Airport
- Restaurants & Hotels Within 1 Mile

Newmark Grubb
Levy Strange Beffort

www.newmarklsb.com

OKLAHOMA CITY
204 N. Robinson, Suite 700
Oklahoma City, OK 73102
405-840-1500

TULSA
110 W. 7th Street, Suite 2600
Tulsa, OK 74119

The information contained herein was obtained from sources believed reliable; however, Newmark Grubb Levy Strange Beffort makes no guarantees, warranties or representations as to the completeness or accuracy thereof. The presentation of this property is submitted subject to errors, omissions, change of price or conditions prior to sale or lease, or withdrawal without notice. Independently Owned and Operated.