

1013 RIG STREET
COMMERCE TWP., MICHIGAN

INDUSTRIAL FOR LEASE
4,982 Square Feet Available

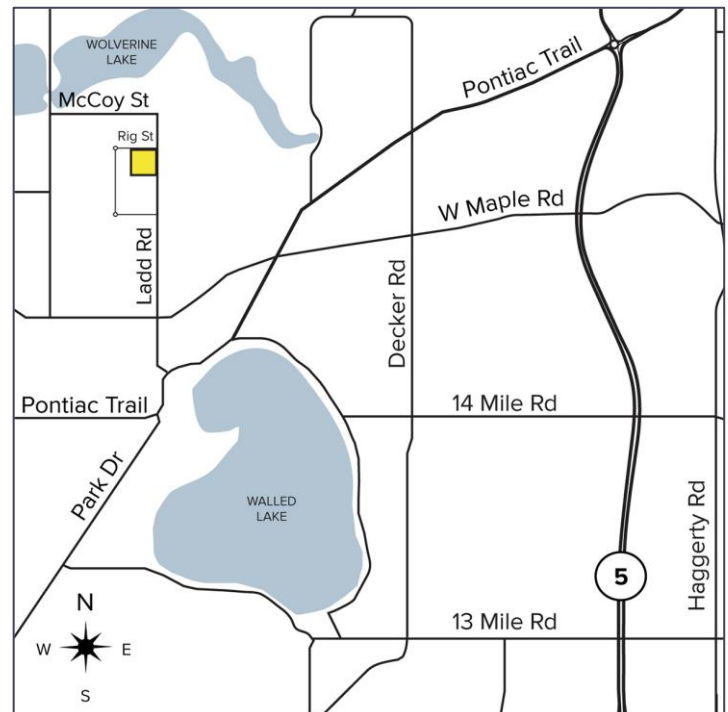


**SIGNATURE
ASSOCIATES**
KNOW SIGNATURE | KNOW RESULTS



PROPERTY FEATURES

- 4,982 square feet available
- 1,500 square feet of office space
- 18' clear height
- (3) 10' x 12', 12' x 10' grade level doors
- Updated and attractive freestanding building
- Zoned Industrial
- Clear span
- Includes restroom with shower
- Fenced parking
- 500+ amps power
- Available immediately
- Lease Rate: Contact Broker



For more information, please contact:

JEFF LEMANSKI
(248) 359 0641
jlemanski@signatureassociates.com

PAUL HOGE
(248) 948 0103
paulhoge@signatureassociates.com

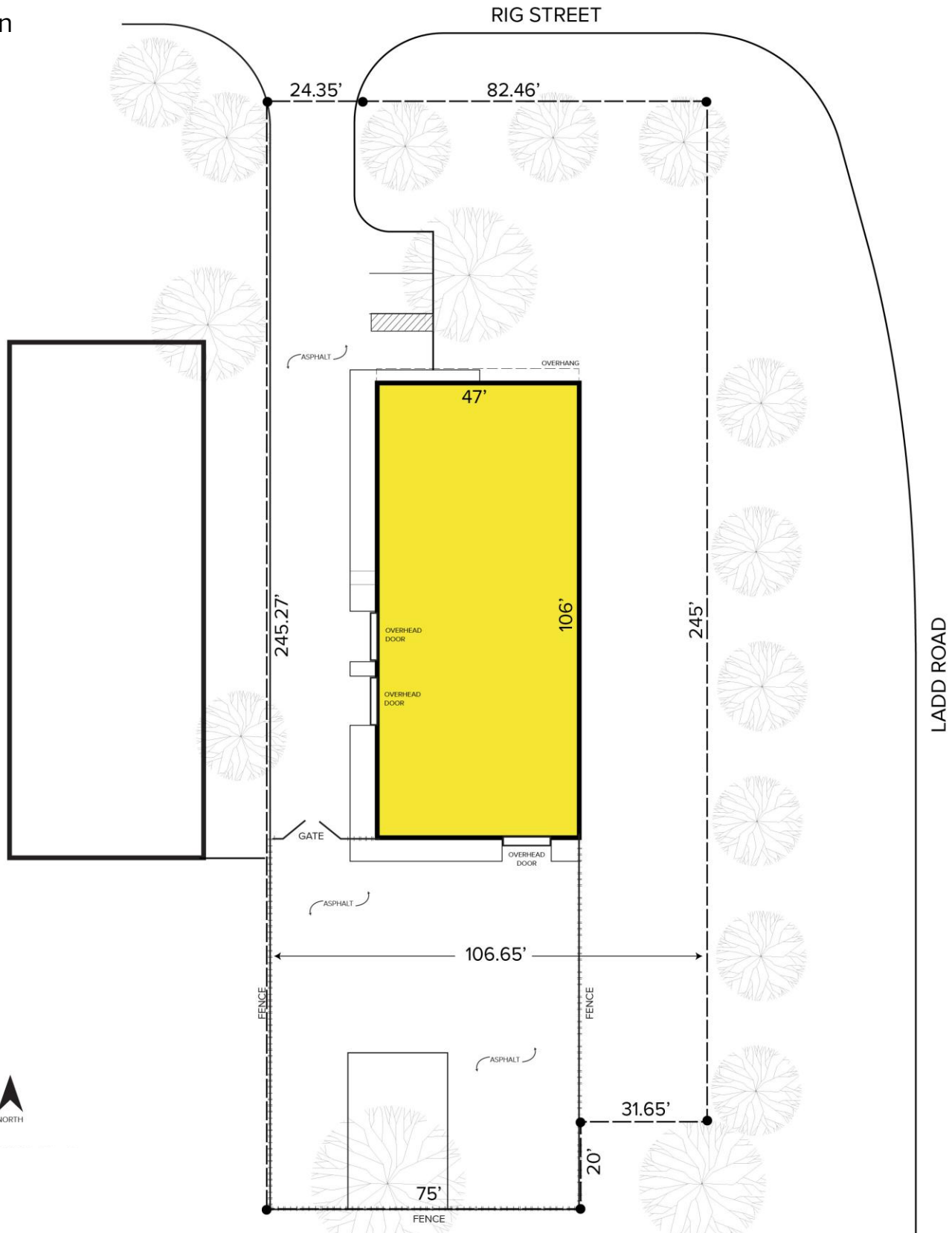
SIGNATURE ASSOCIATES
One Towne Square, Suite 1200
Southfield, MI 48076
www.signatureassociates.com

1013 Rig Street – Commerce Twp., Michigan

Industrial For Lease

4,982
Square Feet
AVAILABLE

Site Plan



For more information, please contact:

JEFF LEMANSKI
(248) 359 0641
jlemanski@signatureassociates.com

PAUL HOGE
(248) 948 0103
paulhoge@signatureassociates.com

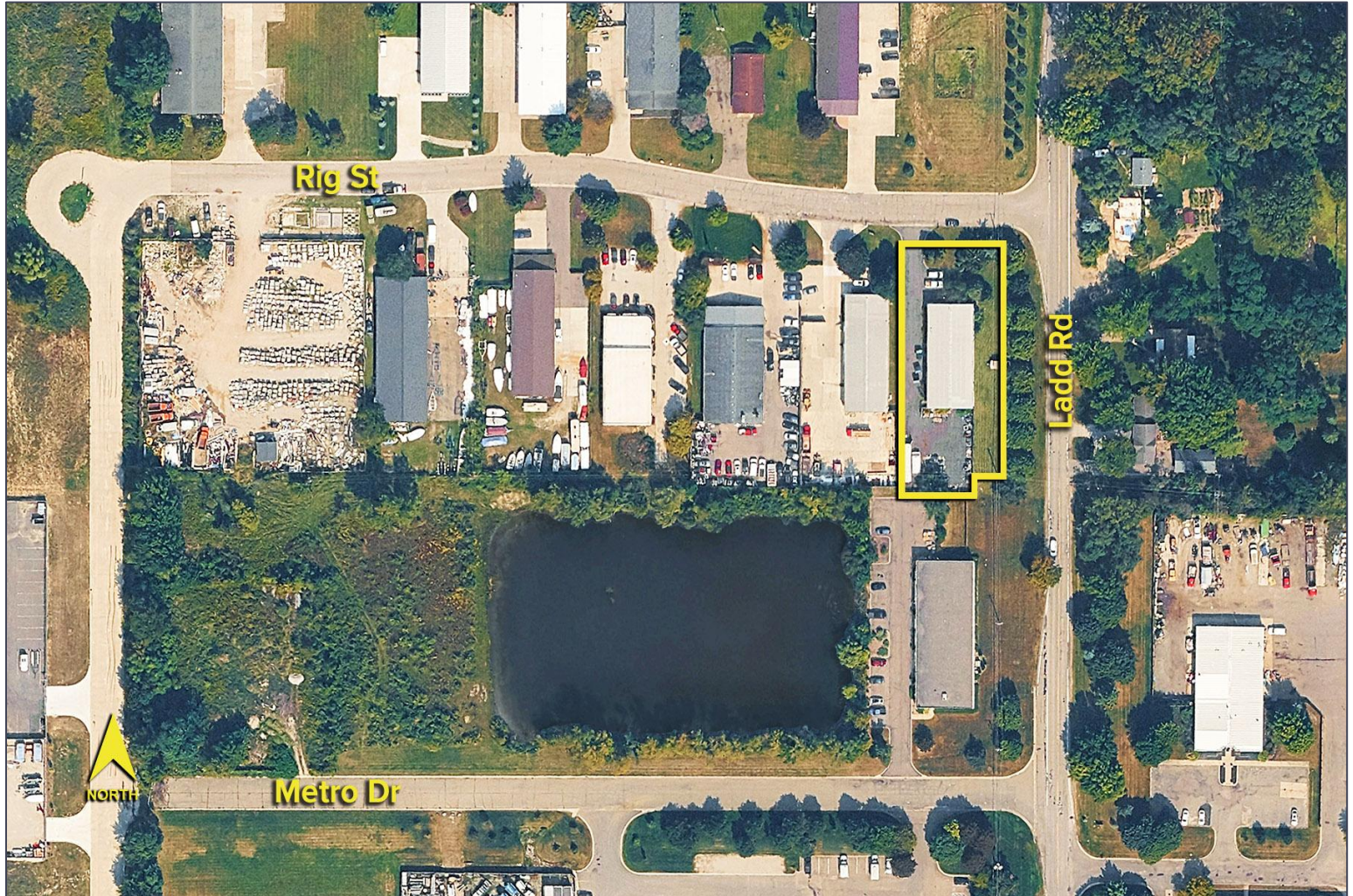
SIGNATURE ASSOCIATES
One Towne Square, Suite 1200
Southfield, MI 48076
www.signatureassociates.com

1013 Rig Street – Commerce Twp., Michigan

Industrial For Lease

4,982
Square Feet
AVAILABLE

Aerial



For more information, please contact:

JEFF LEMANSKI

(248) 359 0641

jlemanski@signatureassociates.com

PAUL HOGE

(248) 948 0103

paulhoge@signatureassociates.com

SIGNATURE ASSOCIATES

One Towne Square, Suite 1200

Southfield, MI 48076

www.signatureassociates.com