

60 Olympia Ave

WOBURN, MA 01801

BrookfieldProperties.com/logistics

19,470 sq. ft.
AVAILABLE

7
TRUCK HEIGHT DOCKS

97,722 sq. ft.
FOOTPRINT AREA

8
AT-GRADE DOORS

22'+
CLEAR HEIGHT

180'
TRUCK COURT

19,470 sq. ft. of storage/distribution with excess land available

60 Olympia Avenue is a 97,722 sq. ft. industrial facility in Woburn, MA. Conveniently located off I-95, 60 Olympia is an industrial storage and distribution center. Unique features include 22' clear heights, 8 at-grade doors (oversized), and 7 truck-height doors.

Turnkey Improvements:

- New LED Lighting
- New Dock Doors
- Exterior Paint
- Office Refresh



WHO WE ARE

More than a landlord. A partner.

As an operator of logistics properties on five continents, we have an unmatched perspective on what sits at the crossroads of innovation and distribution. It's this insight that gives us the ability to deliver time and again hubs of commerce that connect people and goods sustainably and efficiently.

78M+

square feet of logistics space

400+

warehouse, distribution and cold storage properties

56M+

square foot development pipeline



Tailored to your needs

No matter your requirements, we build to the highest standards, delivering novel, efficiency-focused solutions



Making sustainability a reality

Sustainability isn't just a buzzword. It's a commitment to be carbon neutral by 2050 advanced by a breadth of initiatives including LEED-certified design, solar-ready roofs, and low carbon building materials.



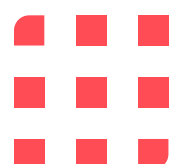
The Brookfield advantage

Our Brookfield global network offers a wealth of advantages – from investments in emerging technologies to sustainable solutions and infrastructure synergies.



Culture of innovation

We foster a culture of innovation to identify and implement technologies that continuously improve our facilities – with a focus on efficiency and safety.



Building specifications


Address	60 Olympia Avenue, Woburn, MA
Description	Industrial storage, distribution, trucking
Footprint Area	97,722 sq. ft.
Clear Height	22'+
Building Dimensions	490 x 260
Loading	7 Truck Height 8 At-grade
Fire Sprinklers	Wet & Dry systems
Column Spacing	North Central space: 22' x 39' Southwest space: 40' x 40'
Truck Court	180'
Roof Construction	EPDM membrane and standing-seam metal
Exterior Construction	Concrete masonry unit (CMU) walls and metal panels



 **22'+**
Clear Height

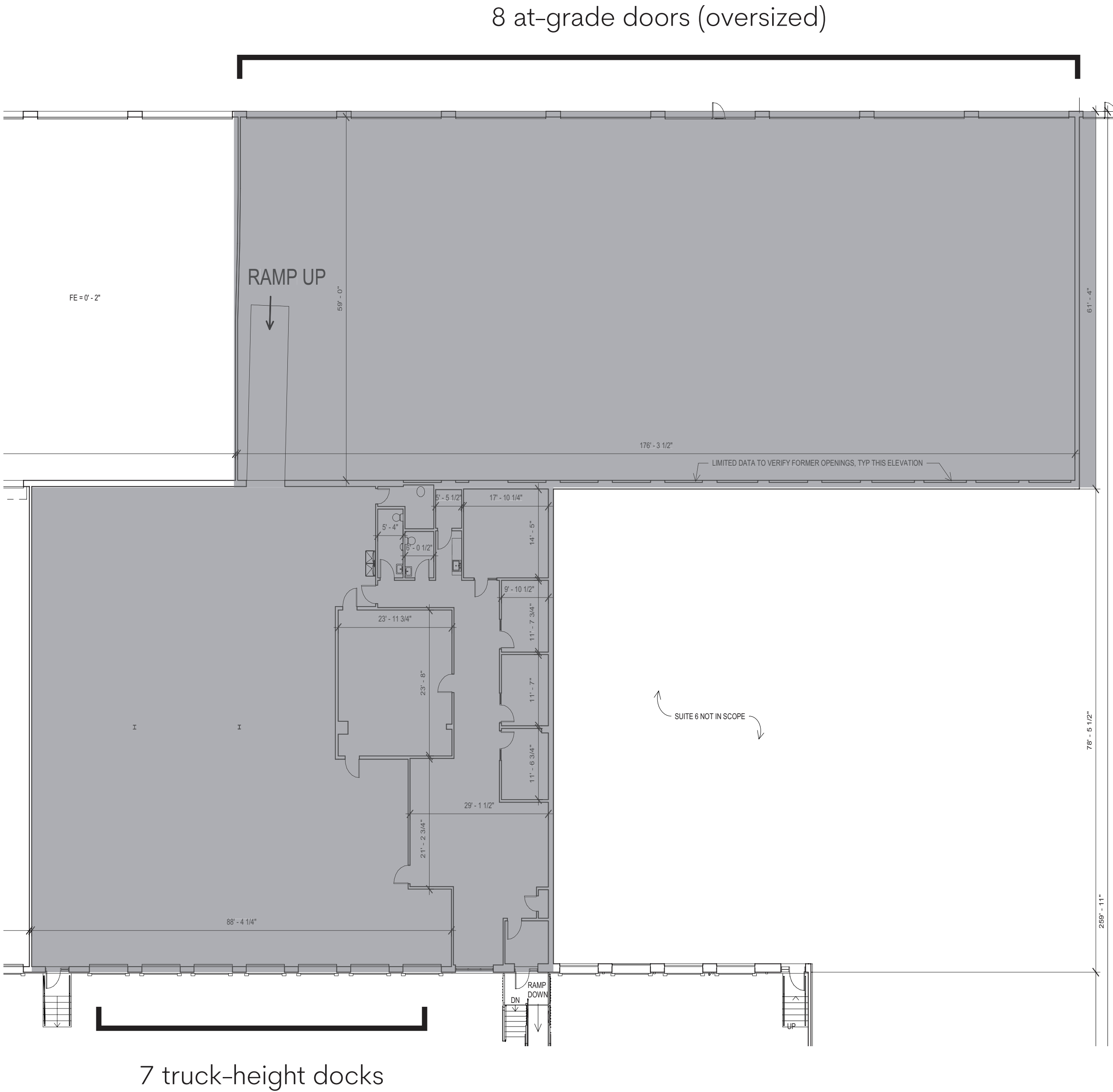
 **8**
At-grade

 **7**
Dock Doors

 **180'**
Truck Court Depth



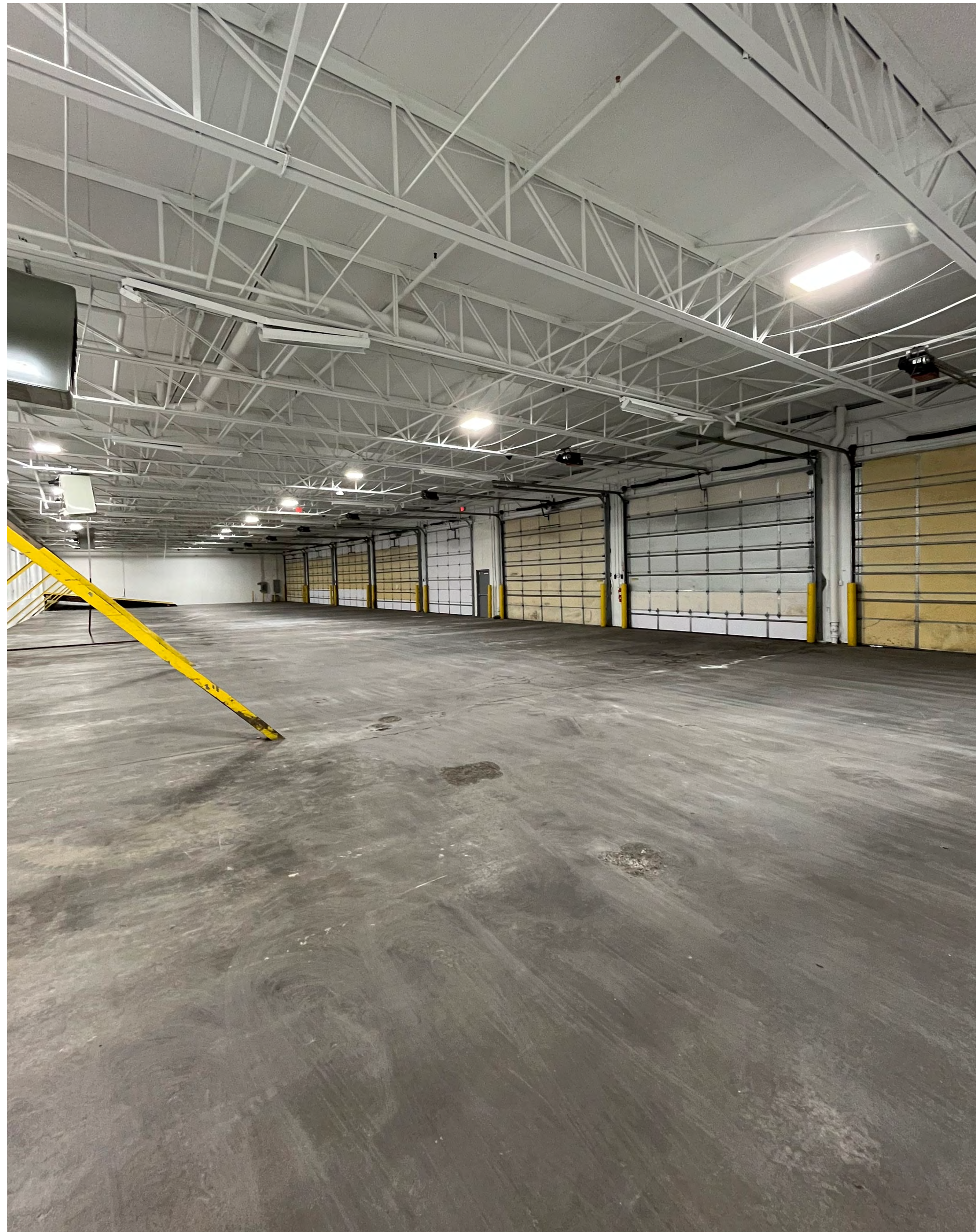
Floor Plan



Site Plan



Interior Photos





0.7 Miles

2 Minutes to I-95

1.4 Miles

4 Minutes to I-93

11.5 Miles

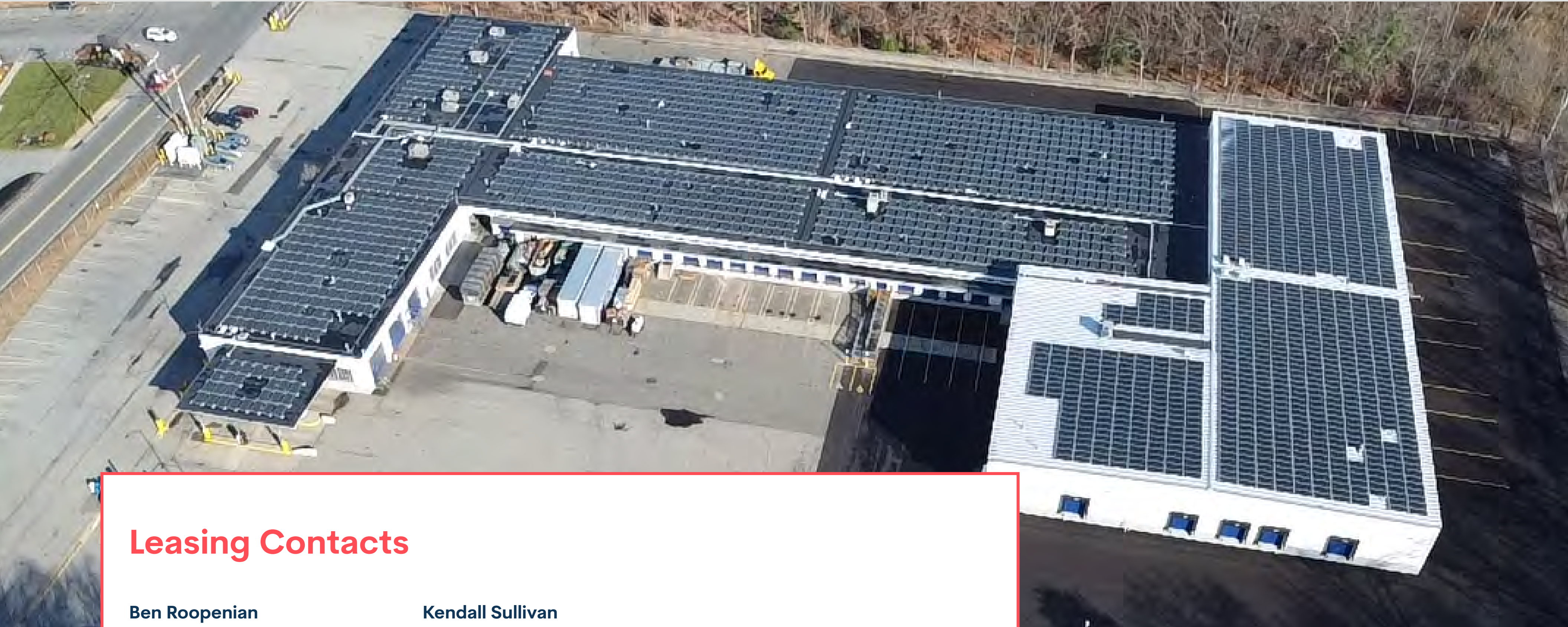
20 Minutes to Boston

60 Olympia Ave

WOBURN, MA 01801



Brookfield
Properties



Leasing Contacts

Ben Roopenian

Executive Vice President

benjamin.roopenian@jll.com

+1 978 201 9795

Kendall Sullivan

Associate

kendall.sullivan@jll.com

+1 978 882 3259

Although information has been obtained from sources deemed reliable, JLL does not make any guarantees, warranties or representations, express or implied, as to the completeness or accuracy as to the information contained herein. Any projections, opinions, assumptions or estimates used are for example only. There may be differences between projected and actual results, and those differences may be material. JLL does not accept any liability for any loss or damage suffered by any party resulting from reliance on this information. If the recipient of this information has signed a confidentiality agreement with JLL regarding this matter, this information is subject to the terms of that agreement. ©2024 Jones Lang LaSalle Brokerage, Inc. All rights reserved.

Brookfield
Properties

Ivan Bushka

ivan.bushka@brookfieldproperties.com

+1 201 514 1991

