

2200 Tech Ct, Woodstock, IL

AVAILABLE: 7,500 SF



Potential Outdoor Storage

## FOR LEASE: Rare Unit w/ Great Loading Options

AVAILABLE: 7,500 SF

OFFICE: 864 SF

CEILING: 18' – 21' Clear

LOADING: 1 Interior dock; 4 Drive-ins (10' x 10')

POWER: 400 Amps, 480V

PARKING: 24 Spots

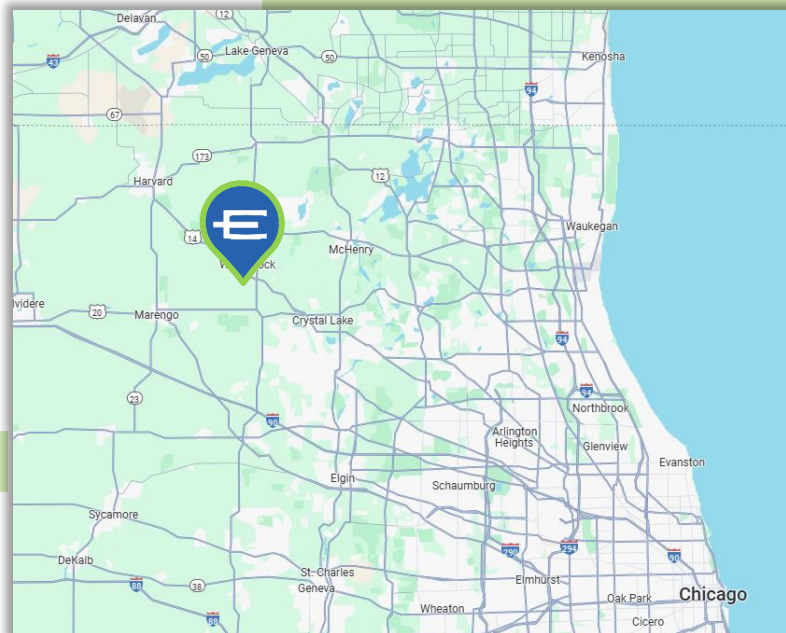
SPRINKLER: Yes

ZONING: M

AVAILABLE: September 1, 2025

LEASE RATE: \$10.95 PSF MG

- Functional Loading Options
- Potential outdoor storage
- Convenient Access to Route 47



**ENTRE**  
Commercial Realty LLC

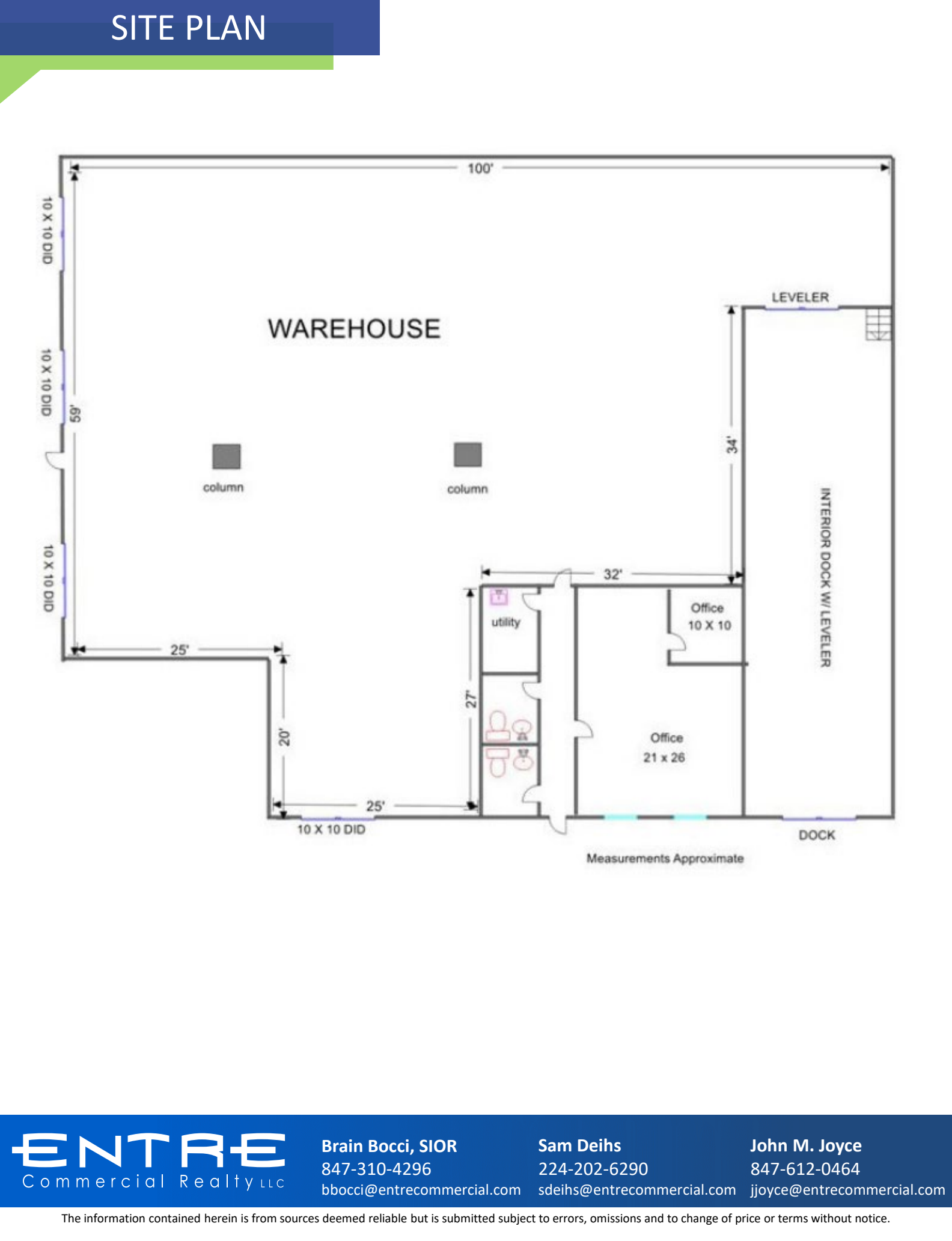
Brain Bocci, SIOR  
847-310-4296  
bbocci@entrealcommercial.com

Sam Deihs  
224-202-6290  
sdeihs@entrealcommercial.com

John M. Joyce  
847-612-0464  
jjoyce@entrealcommercial.com

The information contained herein is from sources deemed reliable but is submitted subject to errors, omissions and to change of price or terms without notice.

## SITE PLAN



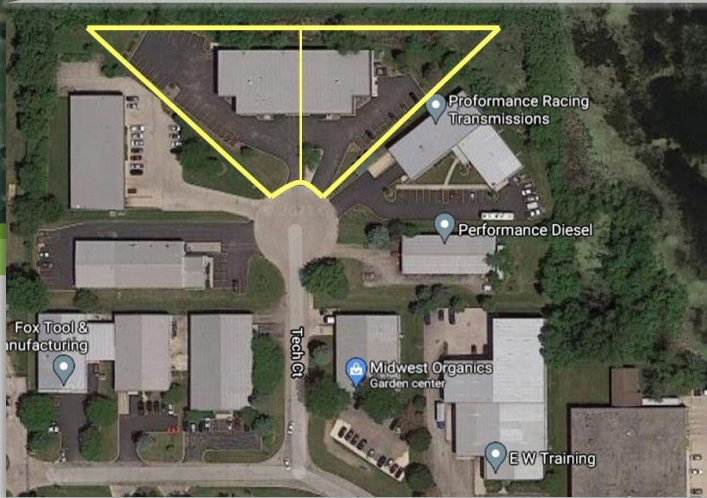
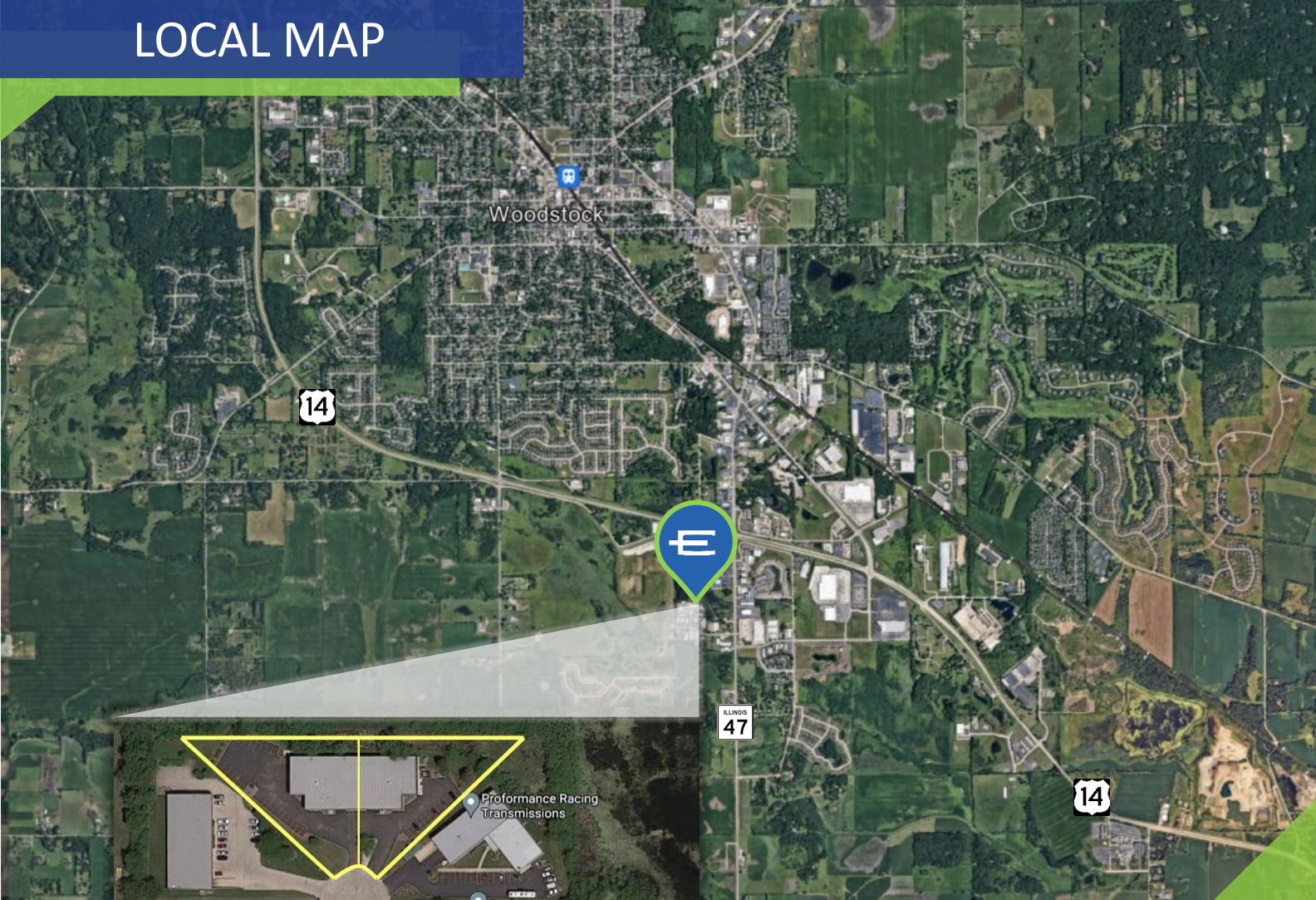


# PHOTOS

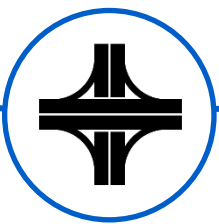




# LOCAL MAP



SCAN/CLICK FOR MAP VIEW



**Near US 14 and Route 47**



**Diverse Local Economy**



**Skilled Labor Force**

**ENTRE**  
Commercial Realty LLC

**Brain Bocci, SIOR**  
847-310-4296  
bbocci@entrecmercial.com

**Sam Deihs**  
224-202-6290  
sdeihs@entrecmercial.com

**John M. Joyce**  
847-612-0464  
jjoyce@entrecmercial.com

[www.entrecmercial.com](http://www.entrecmercial.com) | 3550 Salt Creek Lane, Suite 104, Arlington Heights, IL 60005

The information contained herein is from sources deemed reliable but is submitted subject to errors, omissions and to change of price or terms without notice.