

FOR LEASE

3611 MAIN ST. KANSAS CITY, MO



PROPERTY INFORMATION

- +/- 800 - 1,800 SF Available
- Building Signage Available
- Perfect for Professional, Office, and Retail Uses
- Approximately +/- 500 ft (1 Block) from Streetcar Stop at Armour 35th & Main
- Rare Professional Center, with Parking, in the Heart of Midtown

DEMOGRAPHICS

1 Mile | 3 Mile | 5 Miles



Population

21,377 | 118,144 | 272,873



Average Household Income

\$84,302 | \$93,585 | \$91,444



Number of Households

12,214 | 58,678 | 121,150

CONTACT:

Kayla Hutchings

c: 913.850.9810 | o: 913.747.3325

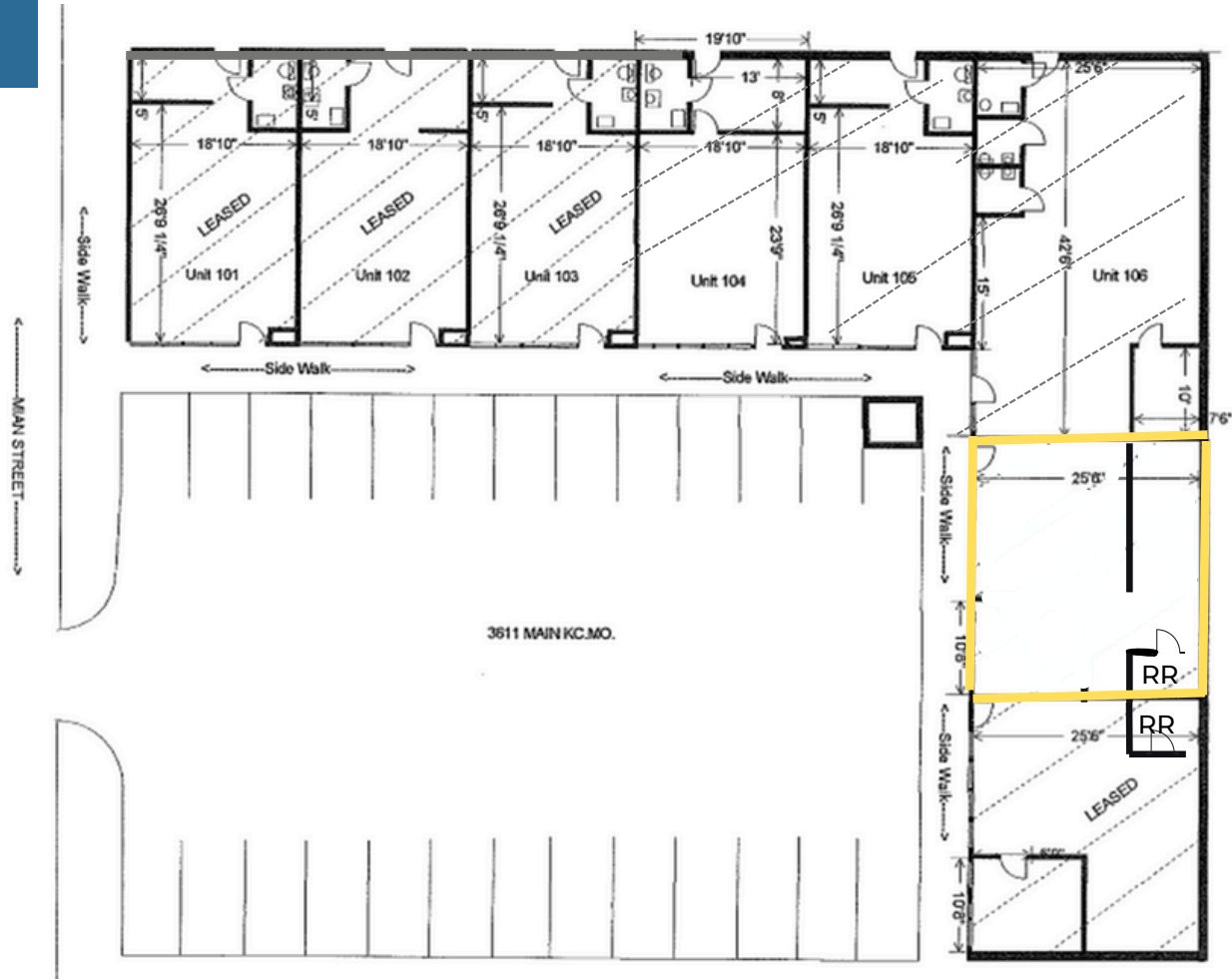
e: kayla@fishmancommercial.com

FOR LEASE

3611 MAIN ST. KANSAS CITY, MO

SITE PLAN

+/- 800 - 1,800 SF
AVAILABLE



INTERIOR PHOTOS

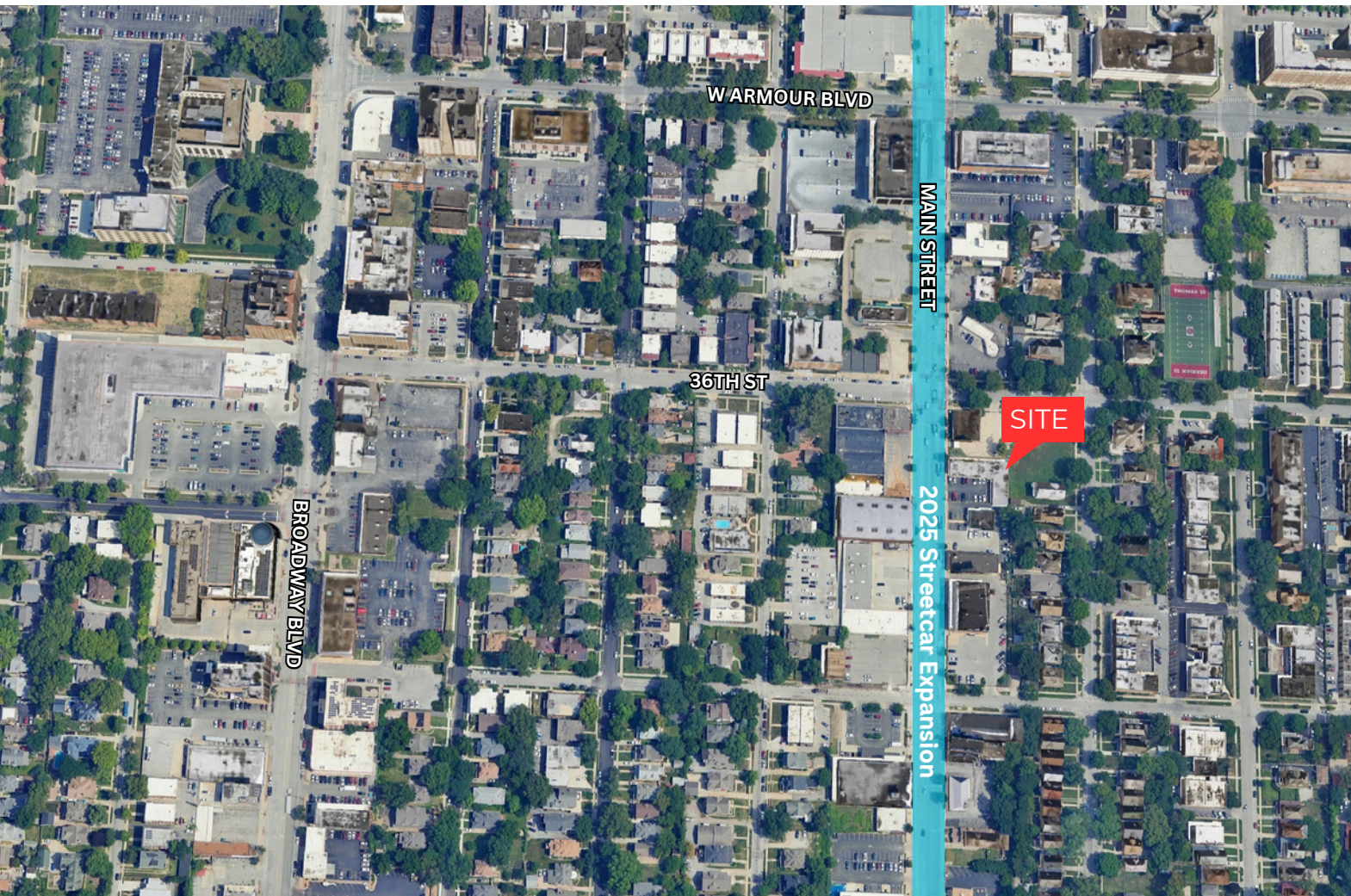


CONTACT:

Kayla Hutchings
c: 913.850.9810 | o: 913.747.3325
e: kayla@fishmancommercial.com

FOR LEASE

3611 MAIN ST. KANSAS CITY, MO



CONTACT:

Kayla Hutchings
c: 913.850.9810 | o: 913.747.3325
e: kayla@fishmancommercial.com