


# OFFICE FOR LEASE

5325 Mark Dabling Blvd.  
Colorado Springs, CO 80918

## PROPERTY SPECIFICATIONS

	<b>LOCATION:</b>	5325 Mark Dabling Blvd. Colorado Springs, CO 80918
	<b>PROPERTY SIZE :</b>	1,461 SF
	<b>LOT SIZE:</b>	5.41 Acres
	<b>ZONING:</b>	OC SS
	<b>LEASE RATE:</b>	\$13.50, NNN

## PROPERTY DESCRIPTION

Just Remodeled! New flooring, paint, and fixtures throughout. Standalone professional office on over 5 acres of beautifully wooded land. Directly beside New Santa Fe Regional Trail and Monument Creek. Quick walking access to University Village Shopping Center.

4 Offices, Large entry/conference area, full kitchen, 2 bathrooms, ample parking.

## MAP



**JOHN RODGERS**

SIOR • CCIM • President

**RENEE NEWLAND**

Broker Associate



john.rodgers@peakcp.net  
719.227.9987

renee@peakcp.net  
719.227.9987

# OFFICE FOR LEASE

5325 Mark Dabling Blvd.  
Colorado Springs, CO 80918



2727 N. Cascade Avenue,  
Suite 127, Colorado Springs, CO 80907

719.227.9987

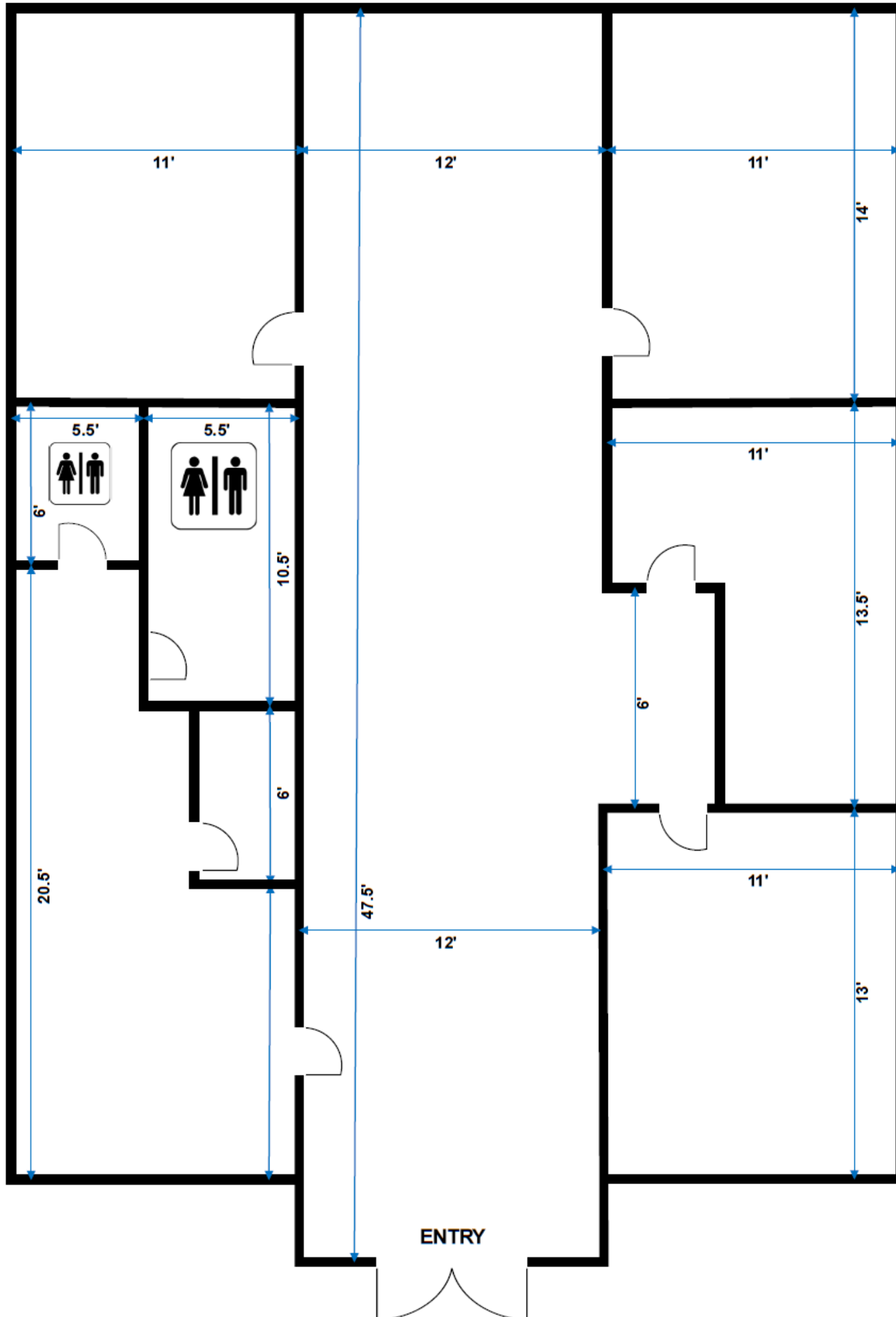
[www.peakcp.net](http://www.peakcp.net)

Peak Commercial Properties believes information contained herein, while not guaranteed, is from sources they believe reliable. Price, terms, and information are subject to change without notice.

# OFFICE FOR LEASE

5325 Mark Dabling Blvd.  
Colorado Springs, CO 80918

## FLOOR PLAN



2727 N. Cascade Avenue,  
Suite 127, Colorado Springs, CO 80907

719.227.9987

[www.peakcp.net](http://www.peakcp.net)

Peak Commercial Properties believes information contained herein, while not guaranteed, is from sources they believe reliable. Price, terms, and information are subject to change without notice.