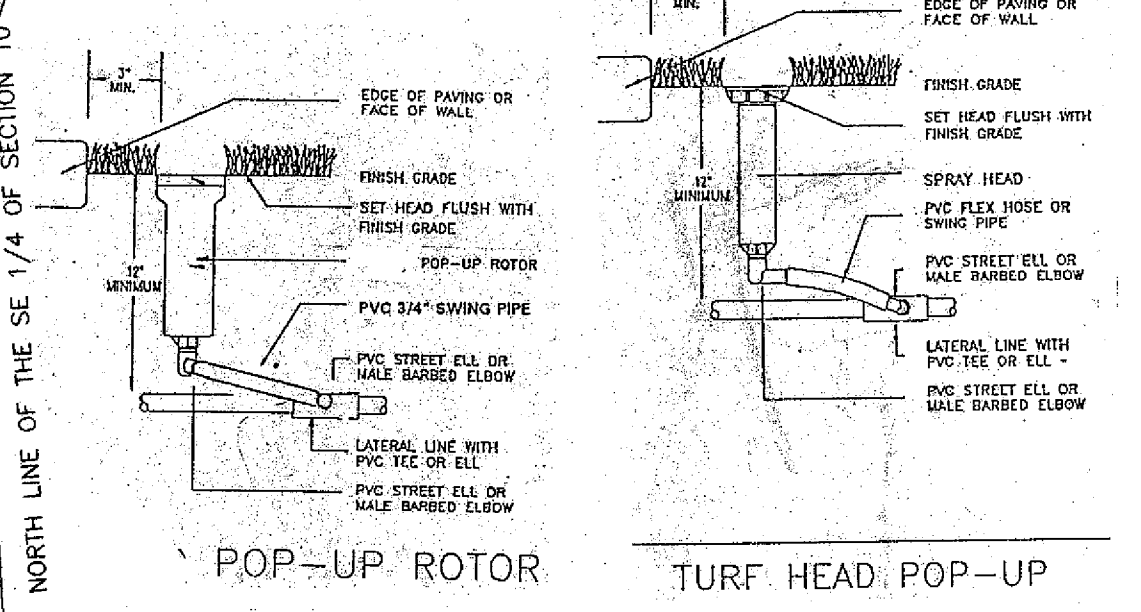
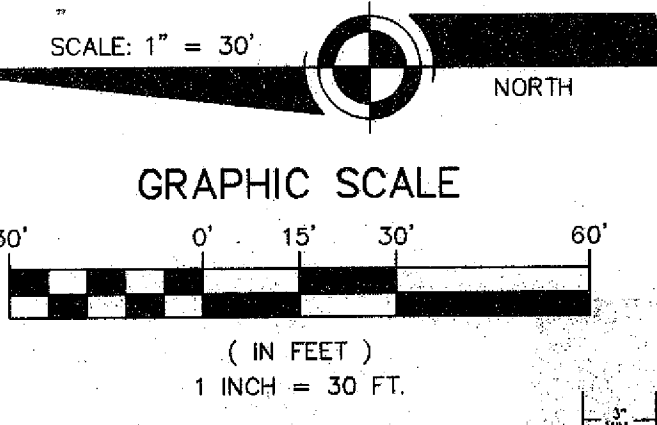
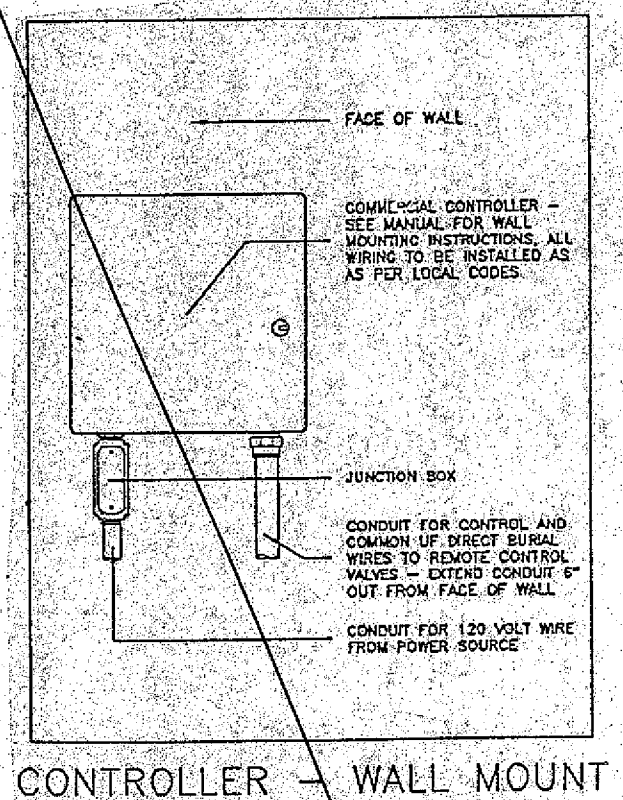


PLAT OF VIERA TRACT KK & LL  
PLAT BOOK 40, PAGE 29 & 30



- RECLAIMED WATER GENERAL NOTES**
- 12) ALL CONNECTIONS TO THE RECLAIMED WATER SYSTEM SHALL BE BELOW GROUND, THROUGH THE STANDARD "RECLAIMED WATER METER BOX". THE METER BOX SHALL BE APPROPRIATELY COLORED AND LABELLED AS APPROVED BY THE COUNTY INSPECTOR.
  - 13) ALL CONNECTIONS TO THE RECLAIMED WATER SYSTEM SHALL HAVE AN ISOLATION VALVE LABELED WITH A STAINLESS STEEL, BRASS OR PLASTIC TAG STATING "RECLAIMED WATER, DO NOT DRINK".
  - 14) UPON ACTIVATION OF THE RECLAIMED WATER SYSTEM, THE CITY INSPECTOR SHOULD BE NOTIFIED TO TEST THE SEPARATION OF THE POTABLE AND RECLAIMED WATER SYSTEMS. SAID TEST SHALL INCLUDE THE "TURN-OFF" OF THE POTABLE SUPPLY VALVE AND THE OPENING OF HOSE BIBS AND FAUCETS. ANY NOTED FLOW OF WATER FROM ANY SUCH FAUCET SHALL RESULT IN THE IMMEDIATE DISCONNECTION OF THE RECLAIMED WATER SYSTEM. THE RECLAIMED WATER SYSTEM SHALL NOT BE REACTIVATED WITHOUT DEMONSTRATION THAT THE POSSIBLE CROSS CONNECTION HAS BEEN ELIMINATED.
  - 15) APPROVAL FOR ACTIVATION SHALL BE GIVEN ONLY AFTER ALL INSPECTION ITEMS HAVE BEEN COMPLETED AND APPROVED IN WRITING BY THE INSPECTOR.
  - 16) ALL RECLAIMED WATER SYSTEMS SHALL BE DESIGNED AND CONSTRUCTED IN ACCORDANCE WITH CHAPTER 17-610 F.A.C.
  - 17) A MINIMUM SEPARATION OF FIVE FEET SHALL BE MAINTAINED BETWEEN RECLAIMED WATER LINES AND POTABLE WATER LINES.
  - 18) OWNER TO PROVIDE PUBLIC NOTICE SIGNS AT ENTRANCES IDENTIFYING THE AREA AS A RECLAIMED WATER USE AREA.

△ = 09°49'48"  
R = 1869.30'  
T = 160.75'  
L = 320.71'



**PARTERRE L.A.**  
Landscape Architecture and Site Planning  
385 Delespine Avenue Titusville, FL 32780 407/383-1012

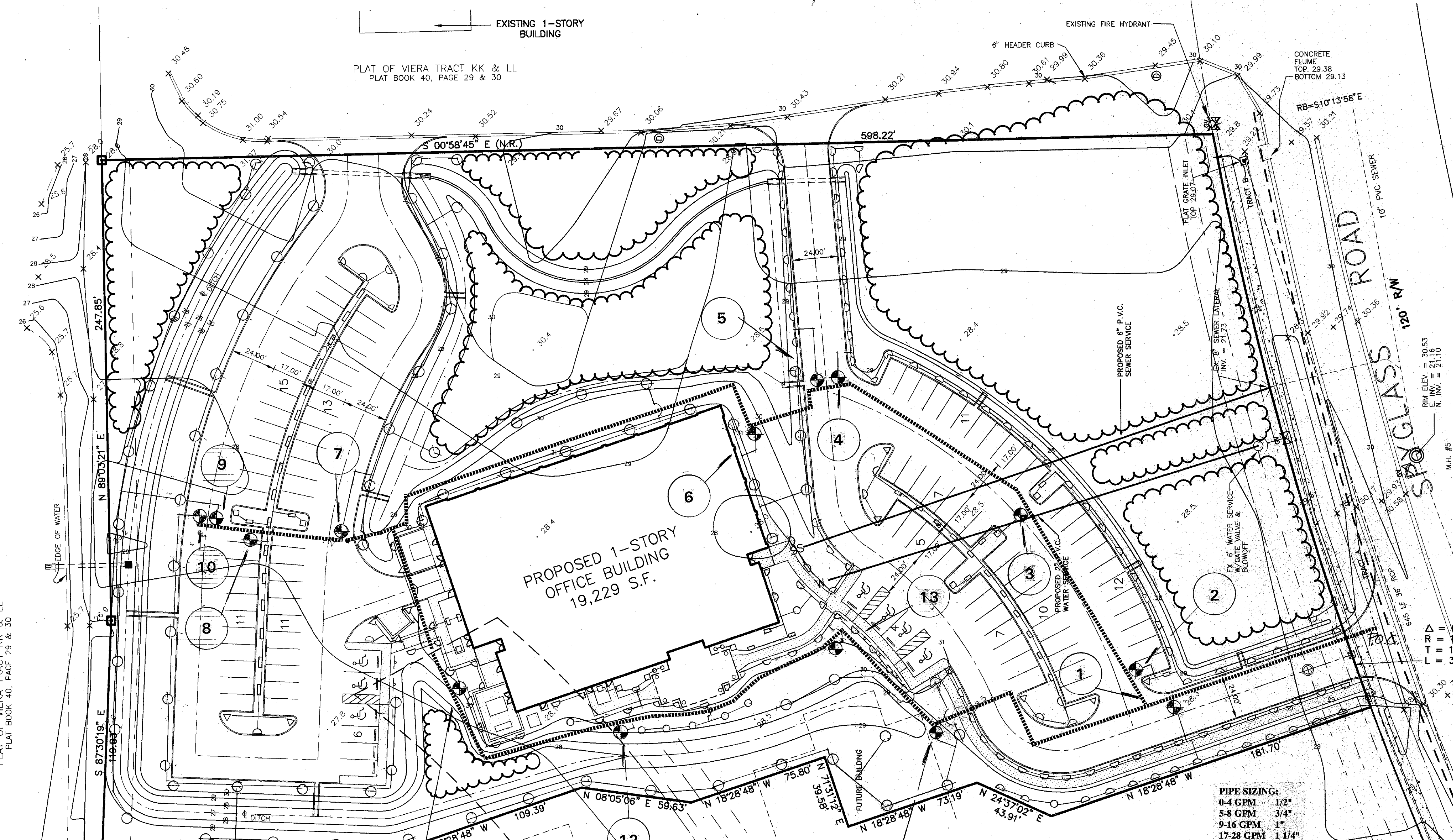
**NEW OFFICE BUILDING FOR  
BREVARD HOSPICE AND BREVARD HOMECARE  
WEUSTHOFF HEALTH SERVICES, INC.**

**LANDSCAPE PLAN IRRIGATION**

drawn *KP* 5-29-96 checked *KP* approved *KP*

Job no.  
**L-2**  
sheet of 1

**ARCHITECTS IN ASSOCIATION ROOD & ZWICK, INC.**  
861 BREVARD AVENUE COCOA, FLORIDA 32922 TELEPHONE (407) 631-9039



**IRRIGATION EQUIPMENT LEGEND:**

- | SYMBOL | DESCRIPTION  |
|--------|--|
|        | RAINBIRD PES-B ELECTRIC REMOTE CONTROL SCRUBBER VALVES. SIZE AS SHOWN. VALVES TO BE INSTALLED IN AMATEK REUSE WATER VALVE BOXES LABELED FOR REUSE. NOTE: CONTRACTOR SHALL BE RESPONSIBLE FOR THE FINAL LOCATION OF THE VALVES TO MEET FIELD CONDITIONS UPON APPROVAL OF OWNER. |
|        | XF-416 TORO CONTROLLER. NOTE: CONTRACTOR SHALL BE RESPONSIBLE FOR THE FINAL LOCATION OF THE CONTROLLERS TO MEET FIELD CONDITIONS UPON APPROVAL OF OWNER. PROVIDE LOCK AND KEY.   |
|        | CONTROLLER SPECIFICATIONS:<br>XF4-06-08 WITH TWO 4-STATION EXPANSION MODULES; TORO XF 416 SERIES 16-STATION CONTROLLER; WALL MOUNT INDOORS OR OUTDOORS AS DESIRED BY CLIENT.   |

ZONE #	VALVE SIZE	GPM	TYPE
1	2"	53	spray
2	1 1/2"	28	spray
3	1 1/2"	23	spray
4	1 1/2"	29	spray
5	1"	13	spray
6	1 1/2"	28	rotor
7	2"	33	rotor
8	1 1/2"	27	spray
9	2"	53	rotor
10	2"	42	rotor
11	1 1/2"	25	spray
12	2"	33	spray
13	2"	34	spray
14	2"	47	rotor

**GENERAL IRRIGATION NOTES:**

- 1) THE IRRIGATION CONTRACTOR SHALL REFER TO THE LANDSCAPE PLAN WHEN TRENCHING TO LAY PIPE TO AVOID NEW AND EXISTING TREES AND LARGE SHRUBS.
- 2) ALL WIRING FROM THE IRRIGATION CONTROLLER TO THE REMOTE CONTROL VALVES SHALL BE UF-141 DIRECT BURIAL CABLE. ALL WIRE SPLICES SHALL BE MADE IN VALVE BOXES ONLY USING 3M "DRY-SPLICE" OR APPROVED EQUAL. PROVIDE SLEEVES FOR WIRE UNDER PAVED AREAS AS REQUIRED.
- 3) UNLESS OTHERWISE INDICATED, PIPING TO A SINGLE SPRAY HEAD SHALL BE 1/2" PVC CL-315 PIPING.
- 4) THE CONTRACTOR SHALL INSTALL THE IRRIGATION CONTROLLER AS INDICATED ON THE DRAWINGS WITH A SPECIFIC LOCATION PROVIDED BY THE CLIENT.
- 5) THE CONTRACTOR SHALL VERIFY ALL CONDITIONS AND DIMENSIONS SHOWN ON THE PLANS AT THE SITE PRIOR TO COMMENCEMENT OF WORK UNDER THIS CONTRACT.
- 6) ALL IRRIGATION INSTALLATION SHALL CONFORM TO LOCAL CODES AND REGULATIONS.
- 7) ALL PIPING ON THE PLANS IS DIAGRAMMATICALLY ROUTED FOR CLARITY AND SHALL BE ROUTED TO AVOID PLANTS. ANY VALVES, LATERAL LINES AND/OR MAINLINE SHOWN IN PAVED AREAS IS FOR SCHEMATIC PURPOSES ONLY; LOCATE IN ADJACENT PLANTING AREA OR SLEEVING. DESIGN MODIFICATIONS SHALL ONLY BE MADE AS NECESSARY TO MEET FIELD CONDITIONS AND ONLY UPON APPROVAL OF THE OWNER. THE CONTRACTOR MUST PROVIDE AS-BUILT DRAWINGS.
- 8) THE CONTRACTOR SHALL BE RESPONSIBLE FOR THE FINAL ADJUSTMENT OF THE SPRINKLERS ARC AND RADIUS TO ASSURE 100 PERCENT COVERAGE.
- 9) 115 VOLT; SINGLE PHASE ELECTRICAL POWER FOR THE IRRIGATION CONTROLLER SHALL BE PROVIDED BY THE CONTRACTOR. CONTRACTOR SHALL BE RESPONSIBLE FOR THE ELECTRICAL HOOK-UP INCLUDING ELECTRICAL MATERIALS.
- 10) IT IS THE RESPONSIBILITY OF THE IRRIGATION CONTRACTOR TO FAMILIARIZE HIMSELF WITH ALL GRADE DIFFERENCES, LOCATION OF STRUCTURES AND UTILITIES. THE IRRIGATION CONTRACTOR SHALL REPAIR OR REPLACE ALL ITEMS DAMAGED BY HIS WORK. HE SHALL COORDINATE HIS WORK WITH OTHER CONTRACTORS FOR THE LOCATION AND INSTALLATION OF PIPE SLEEVES AND LATERALS THROUGH WALLS, UNDER ROADWAYS AND PAVING ETC.
- 11) IRRIGATION HEADS NEAR WALLS ARE TO BE SITUATED TO SPRAY WATER AWAY FROM WALLS.
- 12) CONTRACTOR IS TO LOCATE RAINBIRD 33NDP NON POTABLE QUICK COUPLING VALVES WITH KEY AND SH-1 HOSE ATTACHMENT IN VALVE BOX AT 200" INTERVALS ALONG MAINLINE.
- 13) CONTRACTOR TO PROVIDE RAIN SENSOR AT CONTROLLER.

**IRRIGATION PIPING LEGEND:**

- | SYMBOL | DESCRIPTION   |
|--------|---|
|        | 2 1/2" PVC CL-200 PURPLE LABELED REUSE MAIN LINE.   |
|        | PVC PR-160 LABELED REUSE LATERAL PIPING DOWNSTREAM OF THE ELECTRIC REMOTE CONTROL VALVES.   |
|        | PVC CL-200 PIPE SLEEVES UNDER PAVED AREAS. PROVIDE ONE (1) 4" SLEEVE @ EACH PROPOSED MAINLINE CROSSING AND ONE (2") SLEEVE FOR ELECTRIC WIRING TO CONTROL VALVES. |

**IRRIGATION HEAD LEGEND:**

SYMBOL	MODEL #	DESCRIPTION	GPM	PSI	RADIUS
	570 4EST	SHRUB POPUP	.45	30	4x15'
	570 15Q	SHRUB POPUP	.85	30	15'
	570 15H	SHRUB POPUP	1.65	30	15'
	570 15F	SHRUB POPUP	3.6	30	15'
	570 ASST	SHRUB POPUP	.90	30	4X30'
	570 V-15	SHRUB POPUP	1.14	30	15'

**PRESSURE COMPENSATING SCREENS, SMALL RADIUS AND BUBBLERS**

SYMBOL	DESCRIPTION	GPM	PSI	RADIUS
	570 5F SAM 8F PCS060 BUBBLER	.6	30	3'

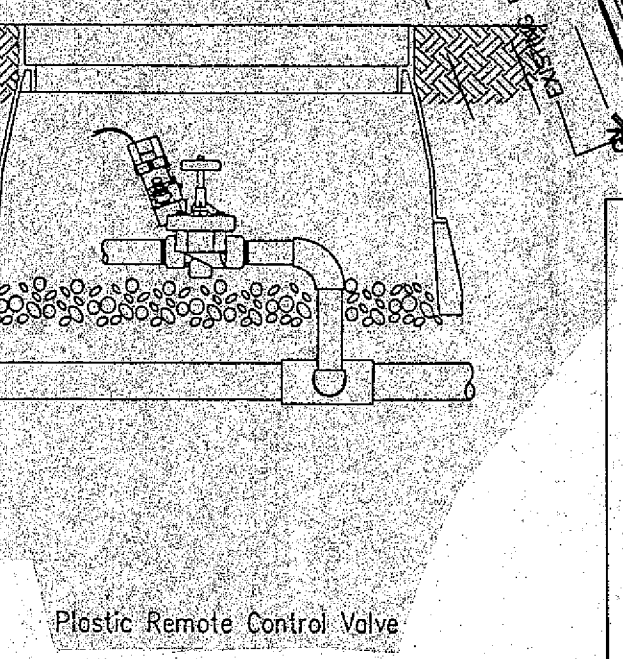
**TORO ROTORS**

SYMBOL	MODEL #	DESCRIPTION	GPM	PSI	RADIUS
	XP300 P 90 07	LAWN POPUP	1.43	35	36'
	XP300 P 180 07	LAWN POPUP	2.85	35	36'
	XP300 P 360 07	LAWN POPUP	5.7	35	36'

ROTORS IN SHRUB AREAS SHALL BE A SHRUB MODEL PLACED ON A SHRUB RISER AT A HEIGHT TO ALLOW THE SPRAY TO CLEAR THE TOPS OF SHRUBS.

**PIPE SIZING:**

0-4 GPM	1/2"
5-8 GPM	3/4"
9-16 GPM	1"
17-28 GPM	1 1/4"
29-35 GPM	1 1/2"
36-55 GPM	2"



PLAT OF VIERA TRACT KK & LL  
PLAT BOOK 40, PAGE 29 & 30

04\_Viera\_Eng\_2008-15\_Tue Jun 25 15:59:07 1995

### LIFE SAFETY NOTES

**APPLICABLE CODES**

STANDARD BUILDING CODE SBCCI	1994
LIFE SAFETY CODE NFPA 101	1994
NATIONAL ELECTRICAL CODE	1994
FBCCS ACCESSIBILITY REQUIREMENTS	1994

**RELEVANT DATA**

CLASSIFICATION OF OCCUPANCY - GROUP B - BUSINESS  
 (ACCESSORY - GROUP A-2 - ASSEMBLY SMALL)  
 (no stage requiring proscenium opening protection)

OCCUPANCY SEPARATION - 1 HR. between assembly and business. (SBCCI-1994, 104.12.3)

CLASSIFICATION OF HAZARD OF CONTENTS: ORDINARY HAZARD  
 TYPE OF CONSTRUCTION: TYPE IV, UNPROTECTED, SPRINKLERED  
 ALLOWABLE SIZE (AREA): 24,000 x 60% = 38,400 SF (SBCCI-1994, TABLE 500)  
 INCLUDES 60% OPEN SPACE INCREASE. (SBCCI-1994, 503.3.1)  
 ACTUAL SIZE (AREA): 19,230 SF  
 ALLOWABLE HEIGHT - 55 FT. (ACTUAL 28 FT.)  
 NUMBER OF STORIES - 1 STORY (2 ALLOWABLE)

NUMBER OF OCCUPANTS - (NOTE: FOR LIFE SAFETY CALCS. ONLY)  
 CONFERENCE RMs: 132 OCCUPANTS (AT 1/100)  
 BUSINESS: 173 OCCUPANTS (AT 1/100 SF.)  
 TOTAL: 305 OCCUPANTS

COMPONENT CONSTRUCTION: (TYPE IV) UNPROTECTED. (TABLE 600)  
 COLUMNS: NON COMBUSTIBLE  
 BEAMS: NON COMBUSTIBLE  
 ROOF/CEILING: NON COMBUSTIBLE  
 EXTERIOR NON-BEARING WALLS: GLASS, NO LIMIT

EGRESS CAPACITY:	OCC. NO.	REQUIRED	ACTUAL
	305	61'	252'

MINIMUM NO. OF EXITS -  
 ASSEMBLY (CONFERENCE RMs): 6 REQUIRED (6 EXITS ACTUAL)  
 BUSINESS: 2 REQUIRED (3 EXITS ACTUAL)  
 MAIN ENTRANCE: 50% ASSEMBLY OCCUPANCY

TRAVEL DISTANCE TO EXITS: MAXIMUM TRAVEL DISTANCE TO AN EXIT IS 250' (SBCCI-1994, TABLE 1004).

ONE-HOUR SEPARATIONS: STORAGE ROOMS (WHERE NOTED); CONFERENCE ROOMS  
 SMOKE TIGHT WALLS: EXIT CORRIDOR

INTERIOR FINISHES: CLASS A OR B

### LEGEND

- CONG BLOCK WALL
- CONG WALL
- METAL STUD WALLS w/ ACOUSTICAL INSUL.
- WALLS WITH ONE HOUR FIRE RATING
- FIRE EXTINGUISHER & CABINET
- AUDIBLE/VISUAL SIGNALLING UNIT
- MANUAL PULL STATION
- SMOKE DETECTOR
- HEAT DETECTOR
- EMERGENCY EXIT SIGN

### SYMBOLS LIST

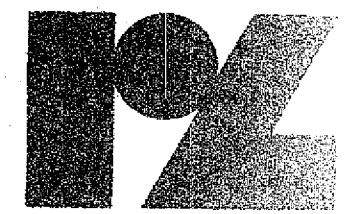
- DETAIL DESIGNATION
  - SHEET NUMBER
  - WALL SECTION
  - INTERIOR ELEVATION
  - DETAIL DESIGNATION
  - SHEET NUMBER
  - PLAN DETAIL
  - DOOR MARK
  - WINDOW MARK
  - WALL TYPE MARK
  - TOILET ACCESSORIES
- NOTE: SEE SPECIFICATIONS FOR SCHEDULES / DESCRIPTION OF MARKS

### NEW OFFICE BUILDING FOR BREVARD HOSPICE & BREVARD HOMECARE WUESTHOFF HEALTH SERVICES, VIERA

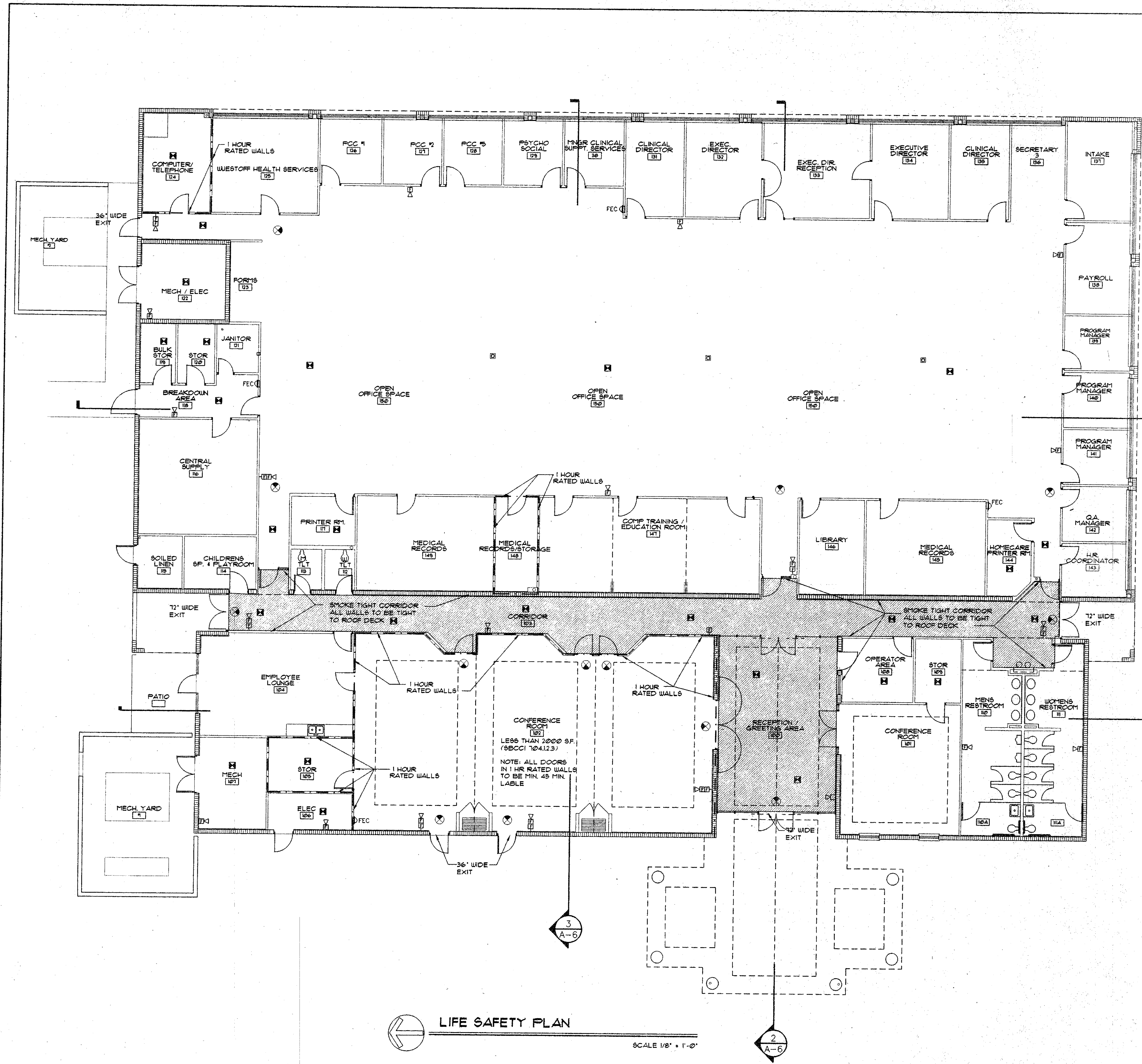
### LIFE SAFETY PLAN

drawn RAS 07/08/96 checked JJR approved

Job no. 9519  
**LS-1**  
 sheet of

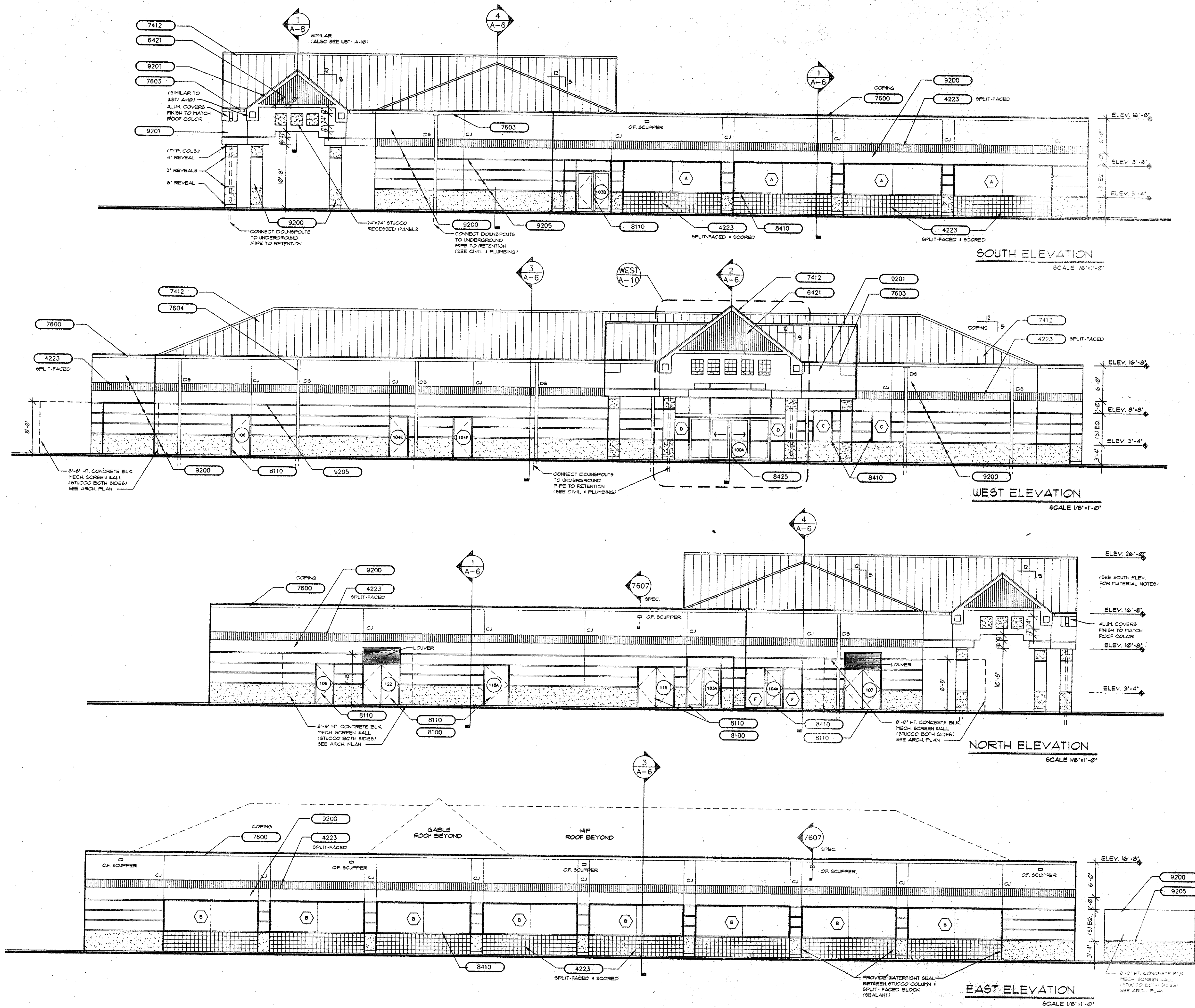


ARCHITECTS IN ASSOCIATION ROOD & ZWICK, INC.  
 681 BREVARD AVENUE COCOA, FLORIDA 32922 TELEPHONE (407) 853-8000



**LIFE SAFETY PLAN**  
 SCALE 1/8" = 1'-0"

C:\DRAWINGS\9519\9519-LS  
 Mon Jul 8 14:39:15 1996



- ### MATERIAL NOTES
- 3250 CONCRETE ACCESSORIES, VISQUEEN, JOINT, FILLERS, ETC.
  - 3300 REINFORCED CONCRETE, SEE STRUCTURAL DRAWINGS
  - 4150 MASONRY ACCESSORIES - JOINT REINFORCEMENT, TIES, ANCHORS, ETC.
  - 4220 CONCRETE MASONRY UNITS (SEE STRUCTURAL)
  - 4223 REINFORCED UNIT MASONRY - SPLIT FACE BLOCK (SEE STRUCT.)
  - 4230 REINFORCED UNIT MASONRY (SEE STRUCTURAL)
  - 4270 GLASS BLOCK (8"x8"x3 1/8") - DELPHI PATTERN
  - 5100 STRUCTURAL STEEL, CONNECTIONS, ETC. SEE STRUCTURAL DRAWINGS
  - 5200 STEEL JOIST, GIRDER, ETC. (SEE STRUCTURAL DRAWINGS)
  - 5300 METAL DECKING, SEE STRUCTURAL DRAWINGS
  - 5301 INTEGRAL METAL DECK AND INSULATION SYSTEM
  - 5460 LIGHT GAUGE METAL ROOF TRUSS
  - 5500 MISC. METAL, BRACES, ANGLES, ETC.
  - 5700 ALUMI. GATE AND FENCE
  - 6100 ROUGH CARPENTRY, BLOCKING, STUDS, FURRING, ETC.
  - 6113 5/8" PLYWOOD SHEATHING WITH 43 LB. FELTS
  - 6190 WOOD TRUSSES PER MANUFACTURER
  - 6200 FINISH CARPENTRY TRIM, ETC.
  - 6400 CABINETRY, SEE DIVISION 6 DETAILS, BACK OF SPEC. BOOK
  - 6421 HARDPANEL - ROUGHSAWN V-GROOVE (4" O.C.)
  - 7160 BITUMINOUS DAMPROOFING ON INTERIOR FACE OF BLOCK
  - 7210 FIBERGLASS BATT CEILING INSULATION, 6"; TIGHTLY INSTALLED AND HELD IN POSITION
  - 7211 FIBERGLASS BATT INSULATION 4"; TIGHTLY INSTALLED AND HELD IN POSITION
  - 7212 RIGID WALL INSULATION, 1" THICKNESS
  - 7250 COMPOSITE CONCRETE AND INSULATION DECK (MIN. SLOPE 1/4" PER 10')
  - 7412 METAL ROOFING
  - 7500 LAPPED FIBERGLASS FELT 30 LB. (ICE & WATER SHIELD)
  - 7511 4-PLY BUILT-UP ROOFING SYSTEM
  - 7600 METAL FLASHING AND TRIM, SIZE AS REQUIRED, IF NOT SHOWN
  - 7603 ALUMINUM GUTTERS, 5 1/4" H X 6" W, .032
  - 7604 ALUMINUM DOWNSPOUTS - RECTANGULAR, SIZE AS REQ. BY METAL ROOFER, PAINT TO MATCH ADJACENT WALL, .032
  - 7606 PVC DOWNSPOUT (SEE PLUMB. FOR SIZES)
  - 7630 ROOF ACCESSORY, BELLOWS TYPE EXPANSION JOINT
  - 7660 GRAVEL STOP
  - 7670 PVC SOFFIT VENT
  - 7850 CONC. SPLASHBLOCK
  - 7870 ROOF DRAIN
  - 7900 SEALANTS AND CAULKING
  - 8100 INSULATED HOLLOW METAL FRAME
  - 8110 HOLLOW METAL DOOR/WINDOW FRAME
  - 8410 ALUMINUM FRAME, TYPICALLY 1 3/4" X 4 1/2"
  - 8411 ALUMI. COL. WRAP, MIN. .040, MATCH FINISH OF FRAME
  - 8425 AUTOMATIC DOORS (PART OF AN ALTERNATE)
  - 8800 1/4" BRONZE TINTED FLOAT OR TEMPERED GLASS
  - 8802 1/4" CLEAR FLOAT OR TEMPERED GLASS
  - 8803 INSULATED BRONZE TINTED GLASS
  - 9010 SUSPENSION SYSTEM FOR FINISH CEILING MATERIAL
  - 9100 3 5/8" STEEL STUD, 18 GA. EXTERIOR, 22 GA. INTERIOR WALL
  - 9101 6" STEEL STUD, LOCATE AT PLUMBING CHASE WALLS AND WALL LOCATIONS OF EXCESSIVE HEIGHT, WIND LOAD, ETC.
  - 9102 METAL FURRING CHANNEL TYPICALLY 3/4" HT. (1" WHERE REQ.)
  - 9103 1" GALVANIZED METAL Z FURRING CHANNEL. SECURE ADEQUATELY TO SUBSTRATE.
  - 9104 8" STEEL STUD, N.L.T., 18 GA.
  - 9200 STUCCO 3/4" THICKNESS (SEE ELEVATIONS FOR FINISH)
  - 9201 STUCCO 3/4" THICKNESS ON SELF-FURRING LATH WITH VAPOR BARRIER
  - 9202 STUCCO, 3/8" TEXTURED SKIM COAT.
  - 9203 STUCCO ACCESSORIES (LATH, CORNER, J-BEAD, ETC.)
  - 9205 ALUM. REVEAL 2" WIDTH, FOR USE IN STUCCO
  - 9246 INTERIOR TILE BACKER BOARD
  - 9250 1/2" GYPSUM BOARD
  - 9251 5/8" F.R. GYPSUM BOARD
  - 9252 FIBERGLASS COATED GYPSUM BOARD
  - 9253 GYPSUM BOARD CASING BEAD, CORNER BEAD, J BEAD, ETC.
  - 9254 GYPSUM BOARD REVEAL - 1" WIDTH
  - 9310 CERAMIC TILE, BASE, PAVERS, ETC.
  - 9340 CULTURED MARBLE, 1" X WIDTH AND LENGTH REQUIRED
  - 9510 ACOUSTICAL CEILING PANELS
  - 9530 ACOUSTICAL INSULATION
  - 9551 4" HT. VINYL BASE
  - 9661 RESILIENT FLOORING (REF. FINISH SCHEDULE)
  - 9680 CARPET FLOOR (REF. TO FINISH SCHEDULE)
  - 9900 PAINTING (REF. TO PAINT SCHEDULE)
  - 10160 TOILET PARTITIONS
  - 10806 TOILET & BATH ACCESSORIES (SEE SPEC. SCHEDULE)

**NEW OFFICE BUILDING FOR  
BREVARD HOSPICE & BREVARD HOMECARE  
WUESTHOFF HEALTH SERVICES, VIERA**

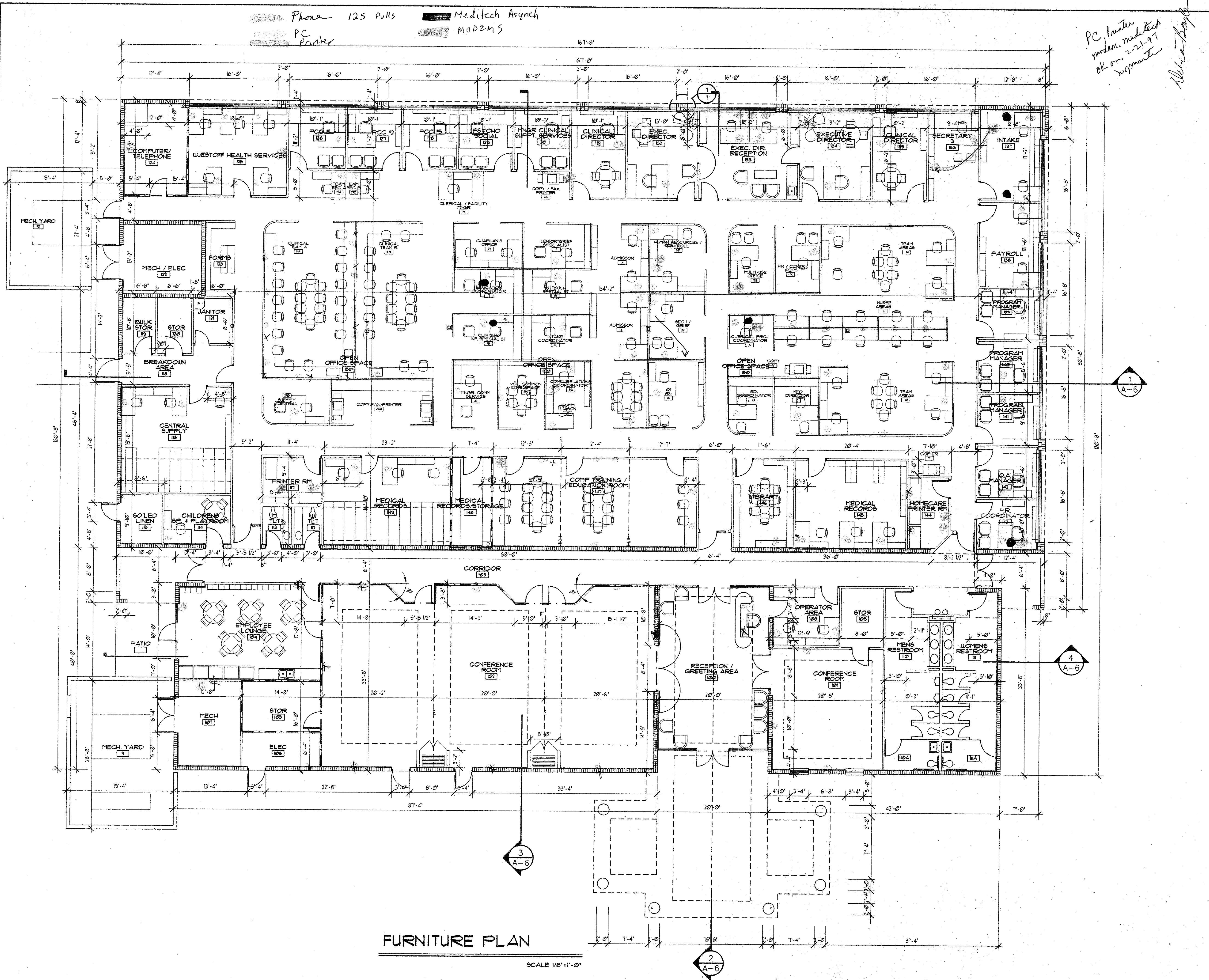
**ELEVATIONS**

drawn RAS 07/11/86      checked JUR      approved

Job no. 5515  
**A-5**  
sheet of

**RZ**

ARCHITECTS IN ASSOCIATION **ROOD & ZWICK, INC.**  
891 BREVARD AVENUE COCOA, FLORIDA 32922 TELEPHONE (407) 831-8050



Phone 125 Pulls  
PC Printers  
Meditech Asynch  
MODEMS

PC Printer  
modem, meditech  
OK on 2-21-97  
Wright

NOTE:  
FURNITURE BY OTHERS  
UNLESS SHOWN OTHERWISE  
(SEE A-1 & A-9, SPEC. SECT.  
06400 & SPEC. DETAILS

LEGEND

- CONC BLOCK WALL
- CONC WALL
- WALLS WITH NO FIRE RATING OR SOUND TREATMENT
- WALLS WITH ONE HOUR FIRE RATING
- WALLS WITH ACOUSTICAL BATT INSULATION
- WALL TYPES - SEE SPECIFICATIONS
- DOOR TYPES - SEE SPECIFICATIONS
- WINDOW TYPES - SEE SPECIFICATIONS
- FIRE EXTINGUISHER CABINET

SYMBOLS LIST

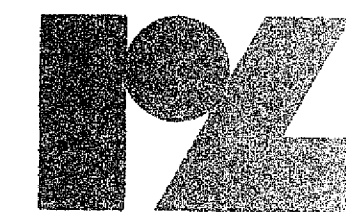
- DETAIL DESIGNATION
  - SHEET NUMBER
  - WALL SECTION
  - DETAIL DESIGNATION
  - SHEET NUMBER
  - INTERIOR ELEVATION
  - DOOR MARK
  - WINDOW MARK
  - WALL TYPE MARK
  - TOILET ACCESSORIES
- NOTE: SEE SPECIFICATIONS FOR SCHEDULES / DESCRIPTION OF MARKS

FURNITURE PLAN  
SCALE 1/8" = 1'-0"

NEW OFFICE BUILDING FOR  
BREVARD HOSPICE & BREVARD HOMECARE  
WUESTHOFF HEALTH SERVICES, VIERA  
FURNITURE PLAN

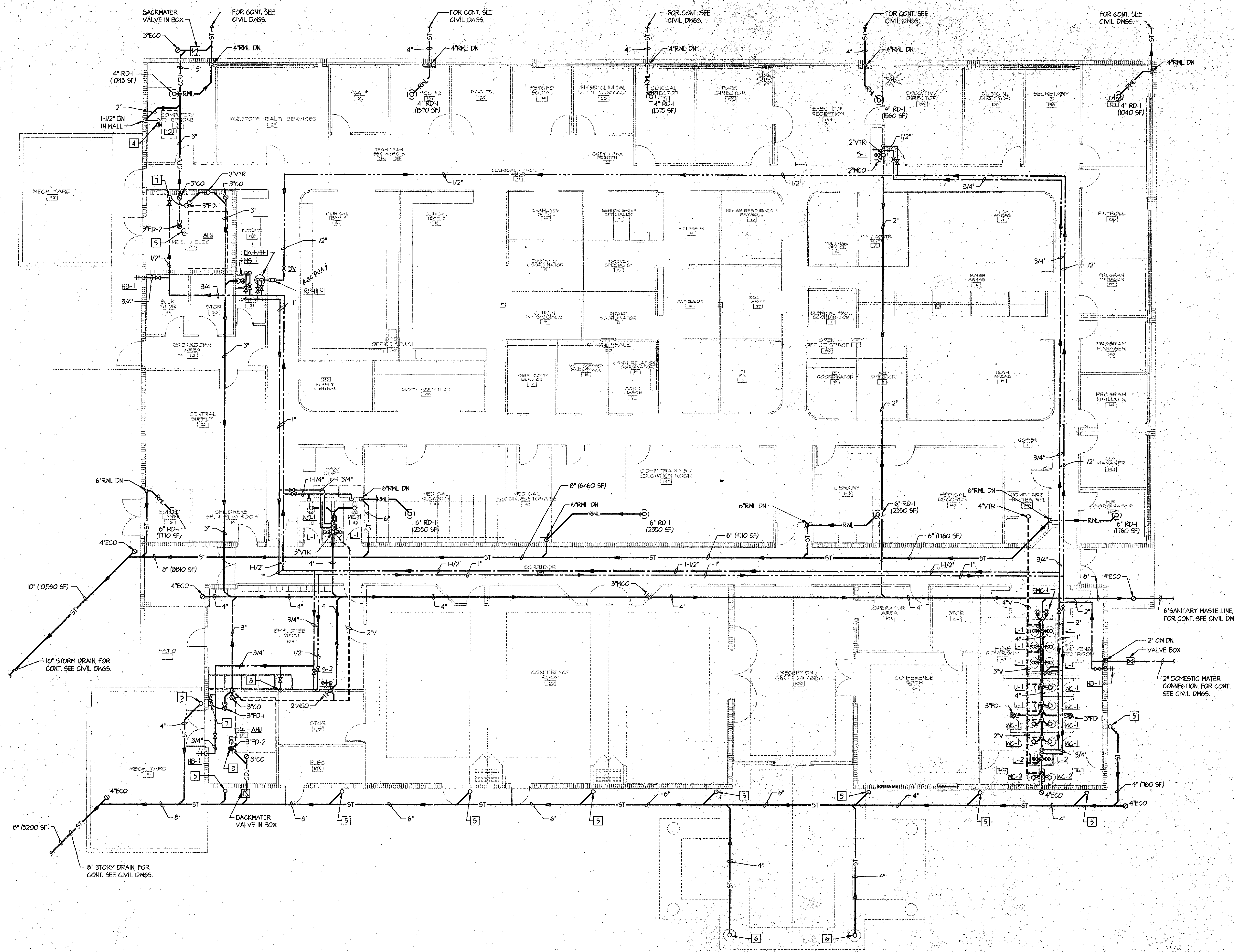
drawn RW/RS 07/12/96 checked JJR approved

Job no. 9519  
F-1  
sheet of



ARCHITECTS IN ASSOCIATION ROOD & ZWICK, INC.  
601 BREVARD AVENUE COCOA, FLORIDA 32922 TELEPHONE (407) 691-8086

C:\DRAWINGS\9519\9519-FRN  
Fri Jul 12 13:48:36 1996



- PLUMBING DRAWING NOTES:**
- 1 ALL SANITARY (SAN), STORM DRAIN (ST) AND CONDENSATE UNDERGROUND (CGU) PIPING INDICATED ON THIS DRAWING IS LOCATED BELOW SLAB OR IN WALL CHASE UNLESS NOTED OTHERWISE.
  - 2 ALL DOMESTIC WATER (CW, HW & HWR), RAIN WATER LEADER (RWL) AND VENT PIPING INDICATED ON THIS DRAWING IS LOCATED IN THE CEILING SPACE OR WALL CHASE UNLESS NOTED OTHERWISE.
  - 3 ROUTE 1-1/2" CONDENSATE DRAIN WITH P-TRAP FROM AHU FOR INDIRECT CONNECTION TO FLOOR DRAIN FOR EXACT LOCATION OF AHU, SEE MECH. DRAWINGS.
  - 4 ROUTE 1-1/4" CONDENSATE DRAIN WITH P-TRAP FROM FCU MOUNTED IN THE CEILING SPACE, DOWN IN WALL, INCREASE TO 2" PIPING BELOW SLAB AND CONNECT TO UNDERGROUND CONDENSATE REMOVAL SYSTEM, FOR EXACT LOCATION OF FCU, SEE MECH. DRAWINGS.
  - 5 EXTEND 4" DIA. STORM DRAIN LINE WITH HUB, 6" ABOVE GRADE FOR CONNECTION TO DOWNSPOUT, FIELD VERIFY EXACT LOCATION OF DOWNSPOUT BEFORE CONSTRUCTION, SEE ARCHITECTURAL DRAWINGS.
  - 6 COORDINATE CONSTRUCTION OF POURED CONCRETE COLUMN TO INCLUDE 4" DIA. RAIN WATER LEADER INSIDE COLUMN, CONNECT TO DOWNSPOUT FROM GUTTER, SEE ARCHITECTURAL DETAIL, ROUTE PIPING DOWN BELOW GRADE AND CONNECT TO STORM DRAIN PIPING AS INDICATED.
  - 7 ROUTE 1/2" COLD WATER LINE DOWN TO TRAP PRIMER VALVE, ROUTE 1/2" SOFT COPPER TUBING BELOW SLAB TO TRAP PRIMER FLOOR DRAIN P-TRAP, TRAP PRIMER ALL FLOOR DRAIN P-TRAPS.
  - 8 ROUTE 1/2" COLD WATER LINE DOWN TO REFRIGERATOR ICE MAKER, PROVIDE SHUT-OFF VALVE AT CONNECTION TO UNIT.
  - 9 FOR LAYOUT AND SIZING OF ALL SAN, VENT & DOMESTIC WATER SEE RISER DIAGRAMS ON SHEET P-4.

**FLOOR PLAN - PLUMBING**  
1/8" = 1'-0"

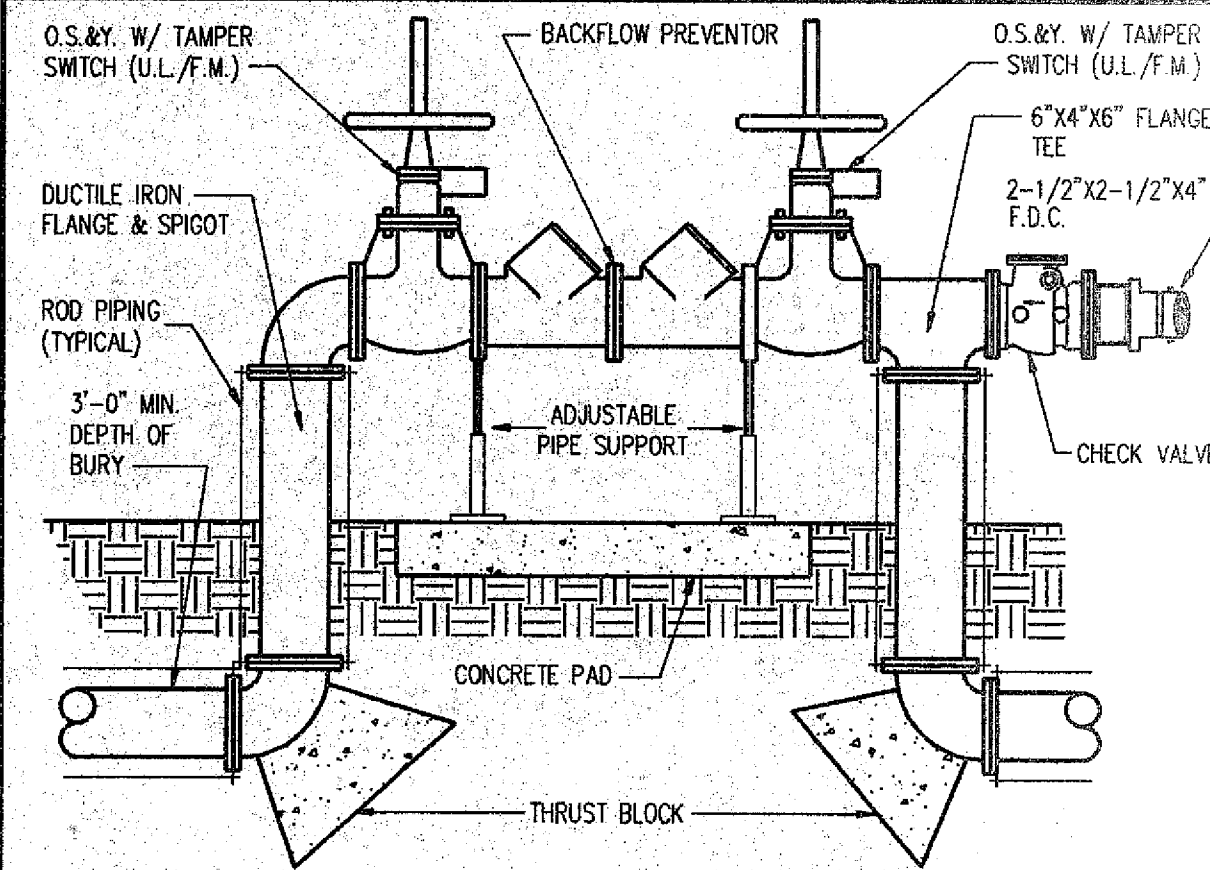
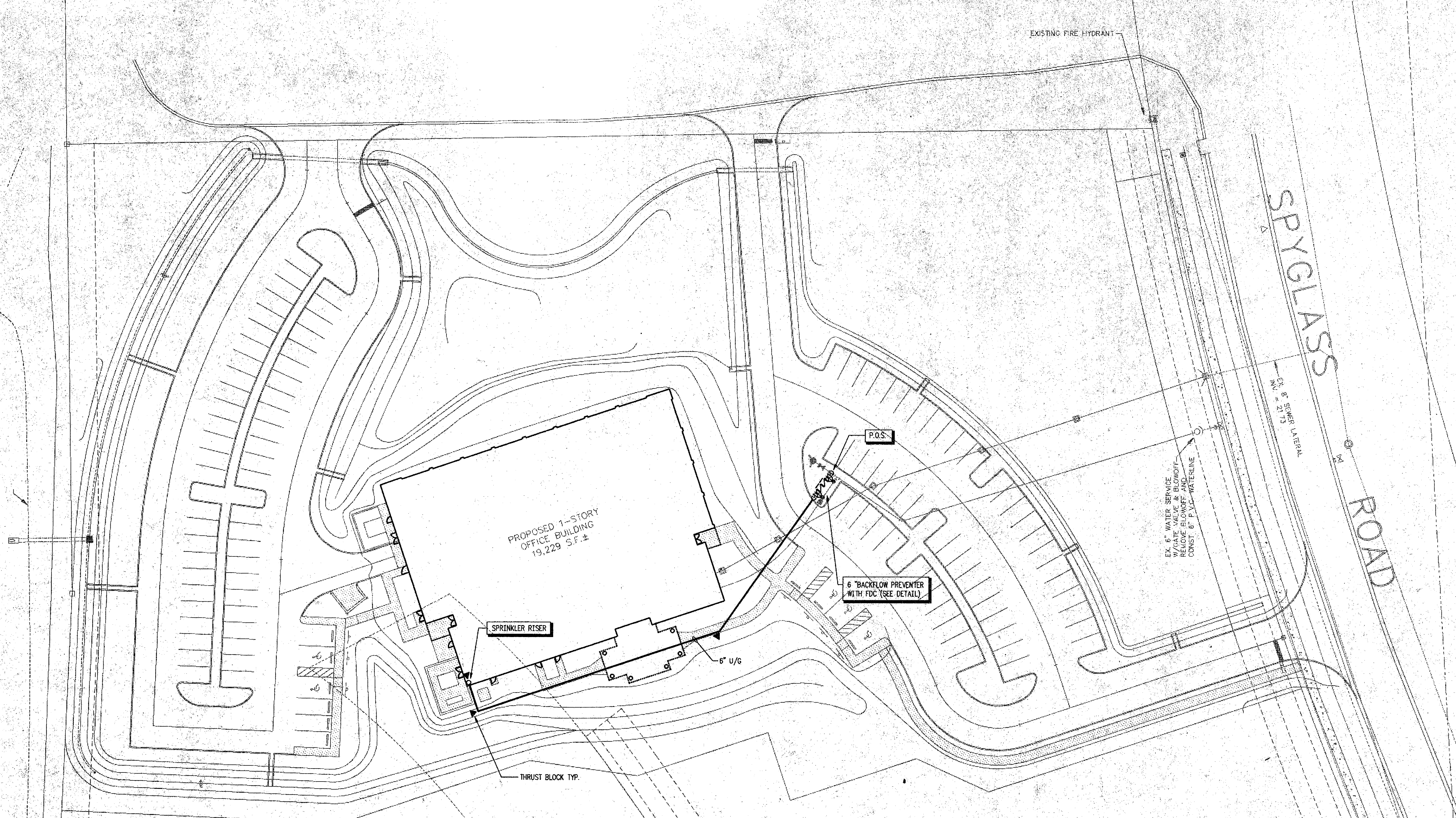
100% CONSTRUCTION DOCUMENTS

**TLC** Tilden Lobnitz Cooper  
Engineering & Architecture  
1717 S. Orange Avenue  
Orlando, Florida 32806, (407) 941-0060

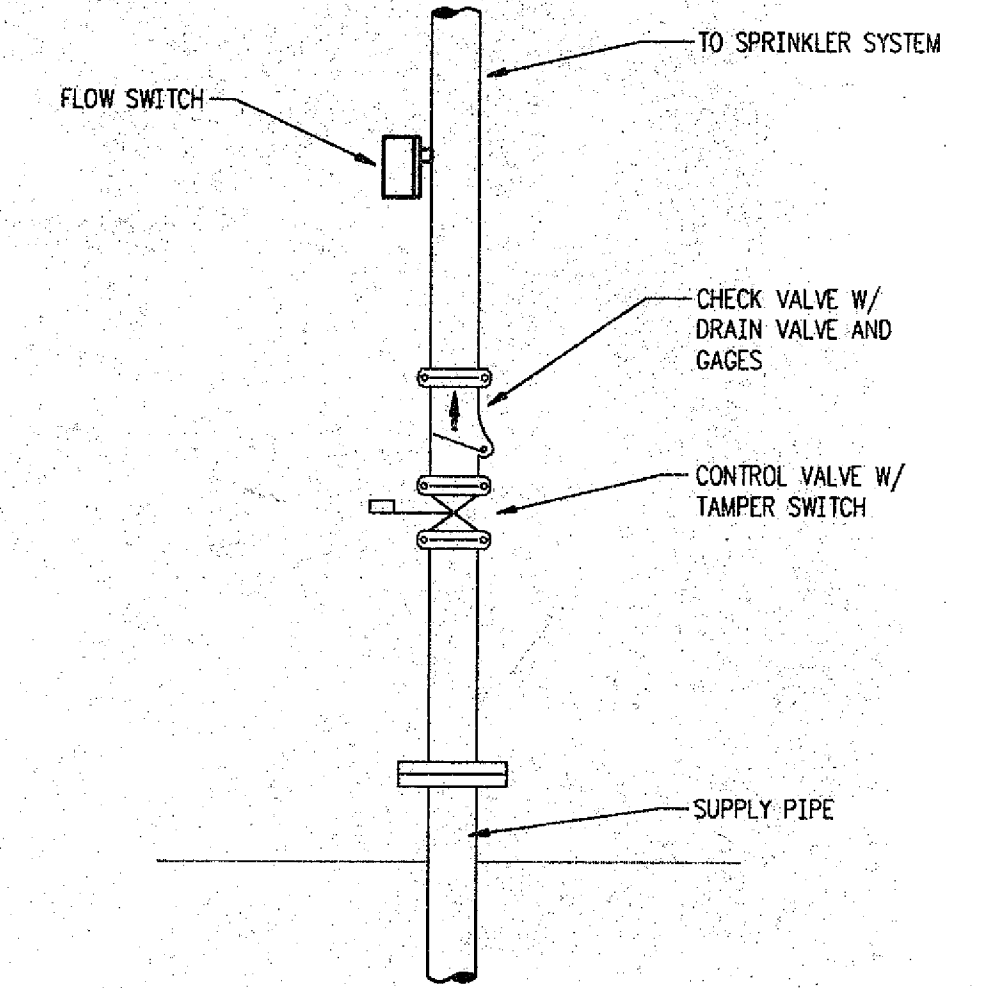
**NEW OFFICE BUILDING FOR  
BREVARD HOSPICE & BREVARD HOMECARE  
WUESTHOFF HEALTH SERVICES, VIERA**  
**FLOOR PLAN - PLUMBING**

drawn BFH 06/28/98 checked HFB approved RLF  
job no. 596004  
**P-2**  
sheet 2 of 4

**ARCHITECTS IN ASSOCIATION ROOD & ZWICK, INC.**  
661 BREVARD AVENUE COCOA, FLORIDA 32922 TELEPHONE (407) 651-9511



BACKFLOW PREVENTOR DETAIL  
N.T.S.



TYPICAL WET PIPE SYSTEM  
N.T.S.

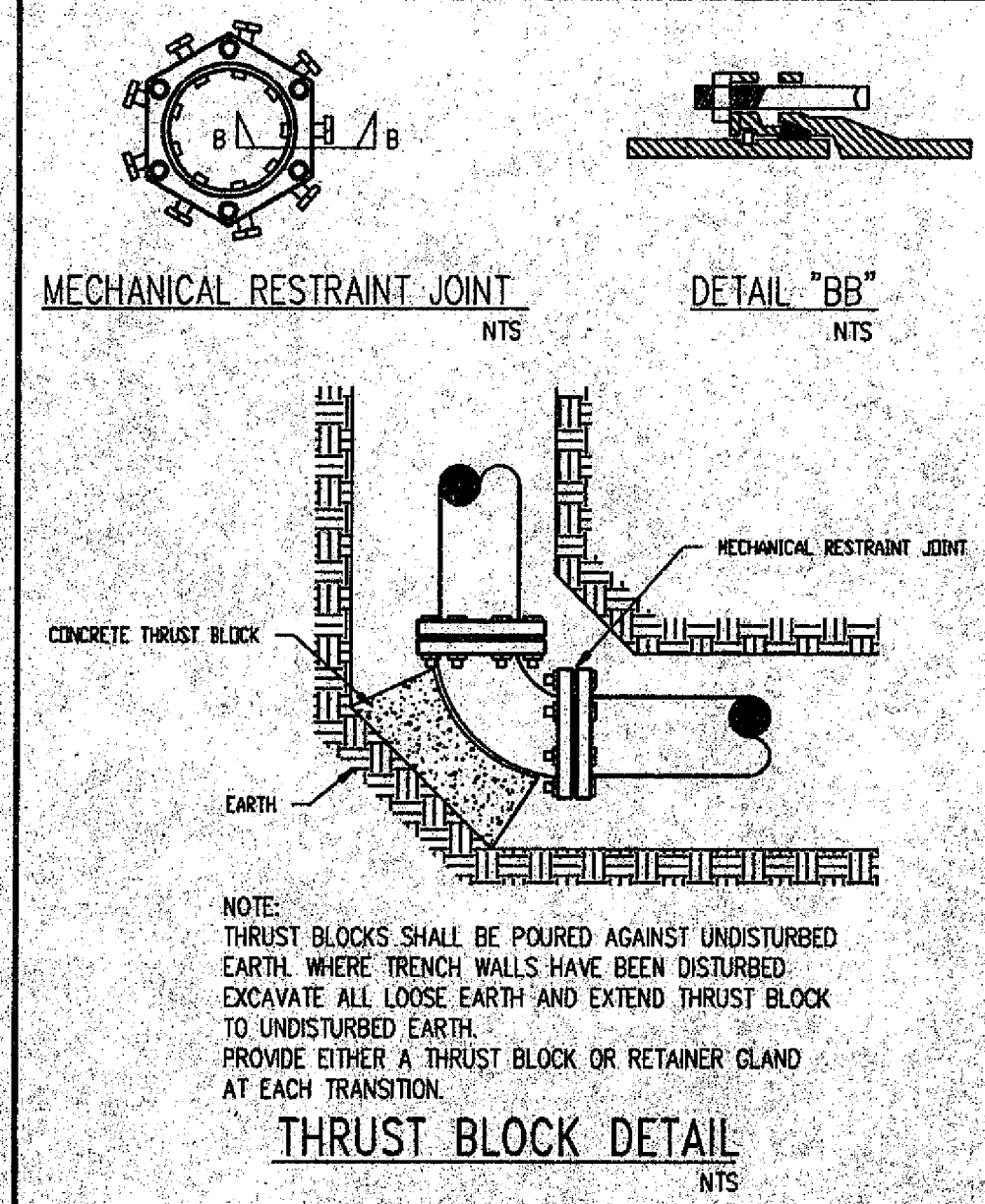


TABLE A-1  
AREA OF BEARING FACE OF CONCRETE THRUST BLOCKS

PIPE SIZE IN.	1/4 BEND SQ. FT.	1/8 BEND SQ. FT.	TEES, PLUGS, CAPS AND HYDRANTS SQ. FT.
4	0.19	0.19	0.19
6	0.46	0.28	0.37
8	0.74	0.46	0.56
10	1.21	0.65	0.84
12	1.87	0.93	1.21
14	2.32	1.30	1.67
16	2.97	1.67	2.14

AREAS IN TABLE HAVE BEEN DERIVED USING A WATER PRESSURE OF 225 POUNDS PER SQUARE INCH (15.5 BARS) AND A SOIL RESISTANCE OF 2000 POUNDS PER SQUARE FOOT (0.9 BARS).

TABLE A-2  
THRUST AT FITTINGS OF 225 PSI WATER PRESSURE

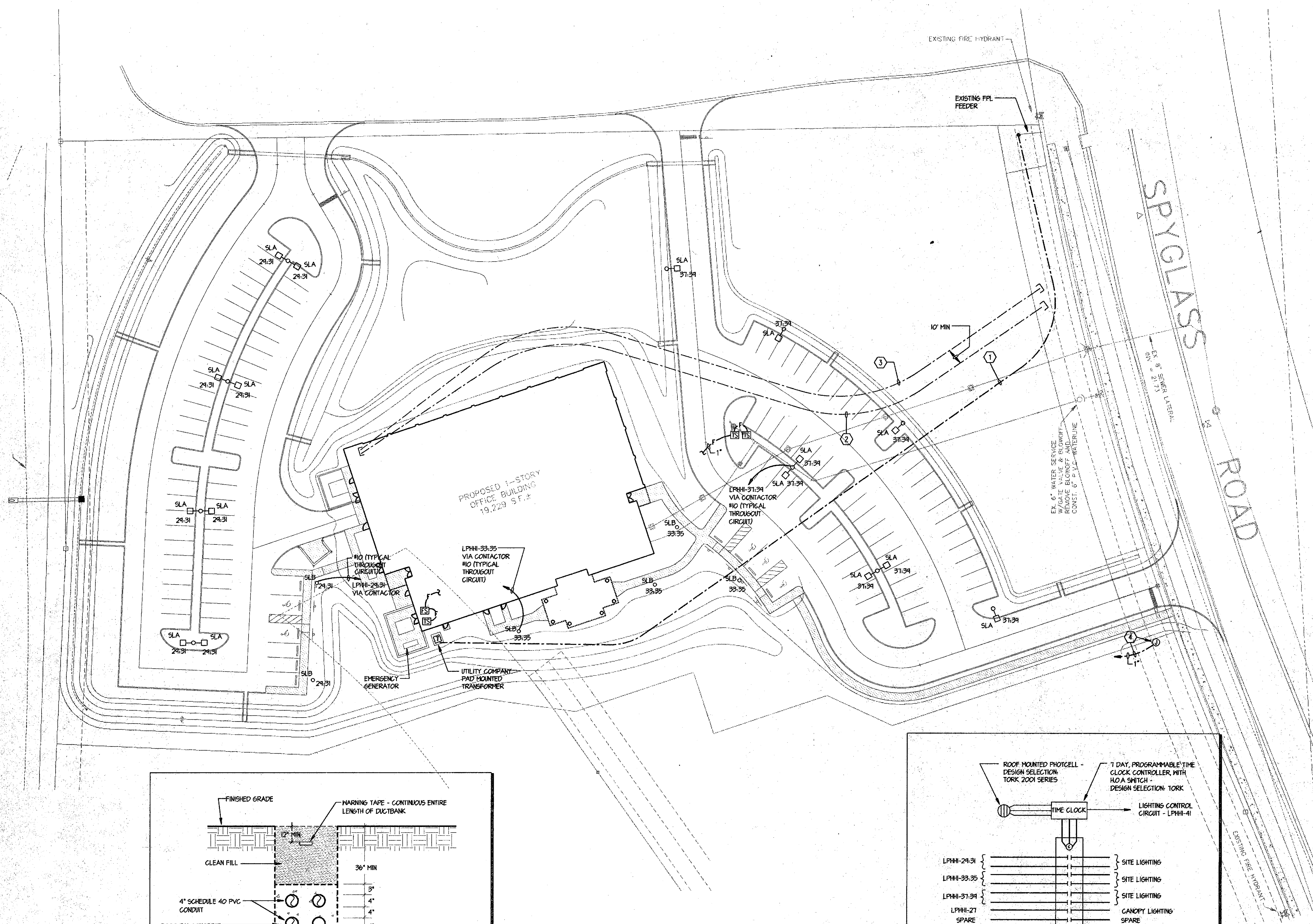
NOM. PIPE DIA. IN.	90 DEGREE BEND	45 DEGREE BEND	22 1/4 DEGREE BEND	11 1/4 DEGREE BEND
4	4072.50	5757.75	3116.25	1558.50
6	8412.75	11898.00	6438.50	3228.75
8	14474.25	20468.25	11076.75	5647.50
10	21773.25	30791.25	16663.50	8496.00
12	30791.25	43544.25	23566.50	12075.00
14	41366.25	58502.25	31662.00	16141.50
16	53502.75	75663.00	40947.75	20675.50

THRUST BLOCK TABLES

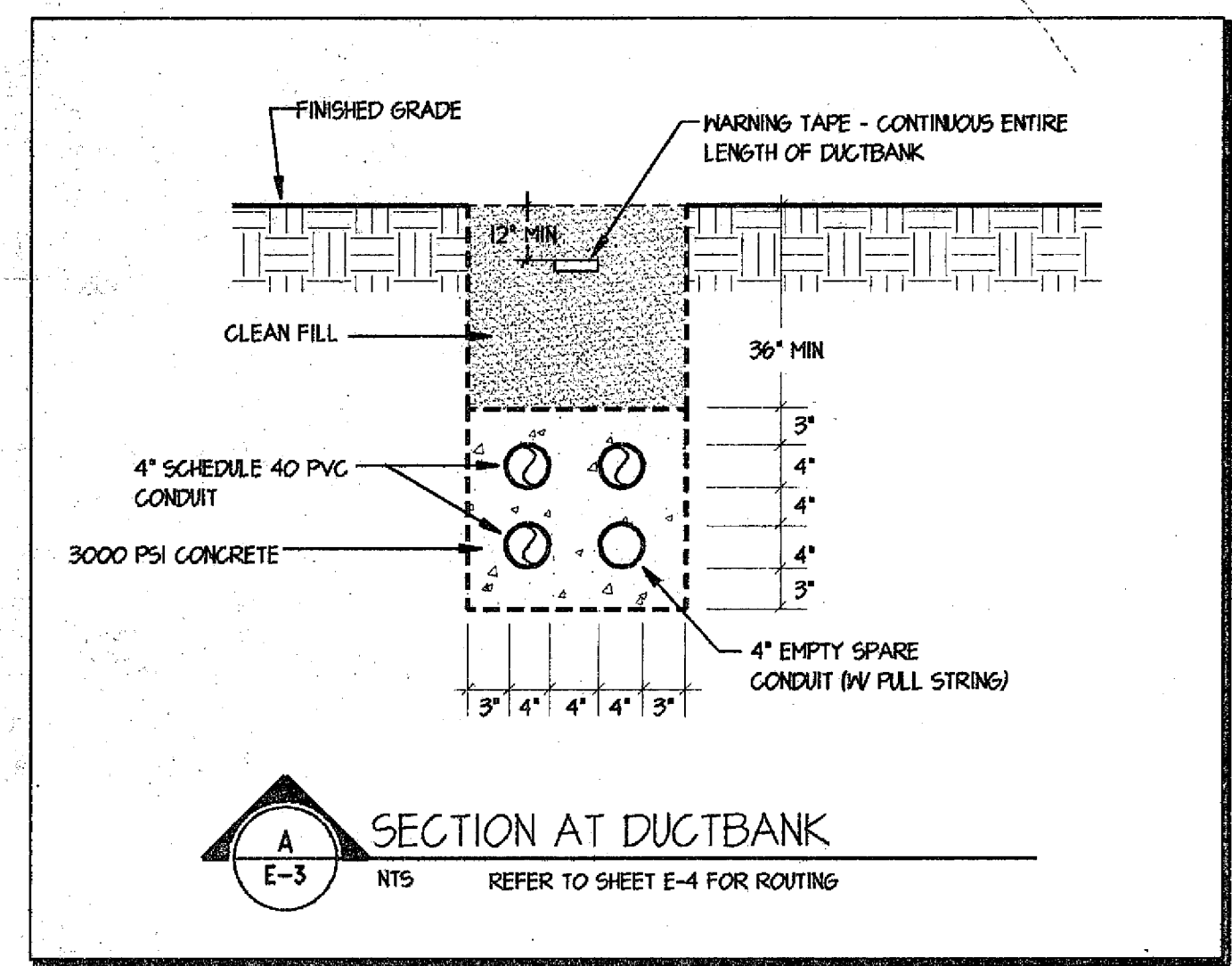
**SITE PLAN - FIRE PROTECTION**  
1"=30'-0"

NEW OFFICE BUILDING FOR  
BREVARD HOSPICE & BREVARD HOMECARE  
WUESTHOFF HEALTH SERVICES, VIERA  
**SITE PLAN - FIRE PROTECTION**

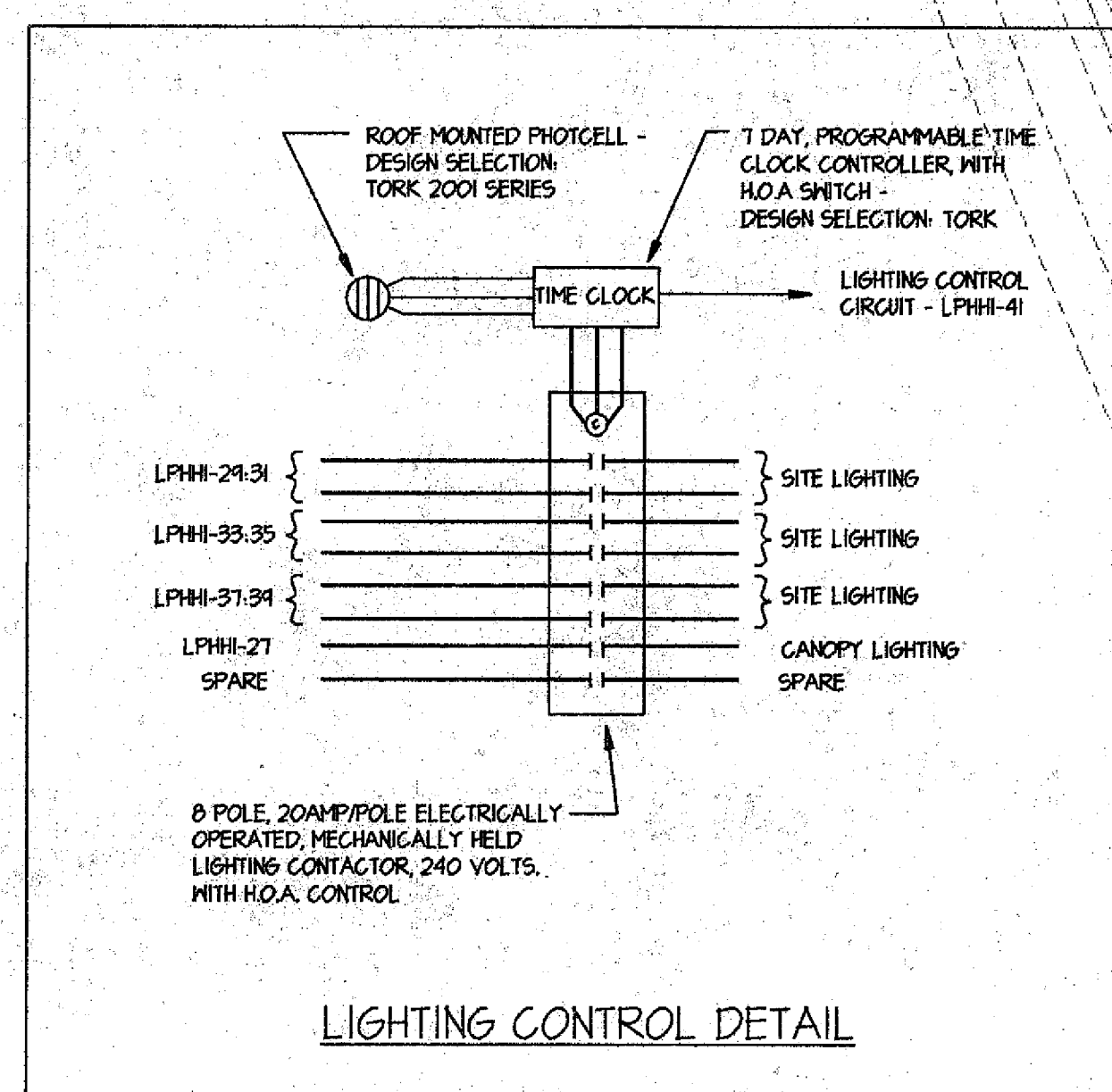
drawn J.L.L. 06/28/96 checked J.L.L. approved R.L.P.  
Job no. 546004  
**FP-1**  
sheet 1 of 2



- PLAN NOTES:**
1. INSTALL (3) 2" SCHEDULE 40 PVC CONDUITS, FURNISHED BY UTILITY COMPANY, (FPL) FOR PRIMARY ELECTRICAL SERVICE. CONDUITS SHALL BE INSTALLED WITH A MINIMUM OF 36" COVER AND INSTALLATION SHALL COMPLY WITH ALL FPL STANDARDS AND SPECIFICATIONS. COORDINATE EXACT SERVICE POINT AND INSTALLATION WITH FPL.
  2. PROVIDE (2) 4" SCHEDULE 40 PVC CONDUITS, DIRECT BURIED WITH 36" MINIMUM COVER FOR TELEPHONE SERVICE. ROUTE CONDUITS FROM TELEPHONE COMPUTER ROOM TO PROPERTY LINE AT APPROXIMATE LOCATION SHOWN. PROVIDE CONDUITS WITH PULL STRING AND CAP AT BOTH ENDS. PROVIDE MARKER AT CONDUIT TERMINATION POINT AT PROPERTY LINE. COORDINATE INSTALLATION WITH TELEPHONE COMPANY.
  3. PROVIDE (1) 4" SCHEDULE 40 PVC CONDUITS, DIRECT BURIED WITH 36" MINIMUM COVER FOR TELEPHONE SERVICE. ROUTE CONDUITS FROM TELEPHONE COMPUTER ROOM TO PROPERTY LINE AT APPROXIMATE LOCATION SHOWN. PROVIDE CONDUITS WITH PULL STRING AND CAP AT BOTH ENDS. PROVIDE MARKER AT CONDUIT TERMINATION POINT AT PROPERTY LINE. COORDINATE INSTALLATION WITH TELEPHONE COMPANY.
  4. PROVIDE GRADE MOUNTED J-BOX AT LOCATION SHOWN FOR FUTURE ENTRANCE SIGN. PROVIDE DIRECT BURIED EMPTY 1" CONDUIT FROM BOX TO MAIN ELECTRICAL ROOM AND STUB UP AT PANEL "LP-HH-1". CONDUIT SHALL HAVE MINIMUM OF 36" COVER AND SHALL BE PROVIDED WITH A PULL STRING.



**SITE PLAN - ELECTRICAL**  
 NORTH  
 1" = 30'-0"



**NEW OFFICE BUILDING FOR  
 BREVARD HOSPICE & BREVARD HOMECARE  
 WUESTHOFF HEALTH SERVICES, VIERA**

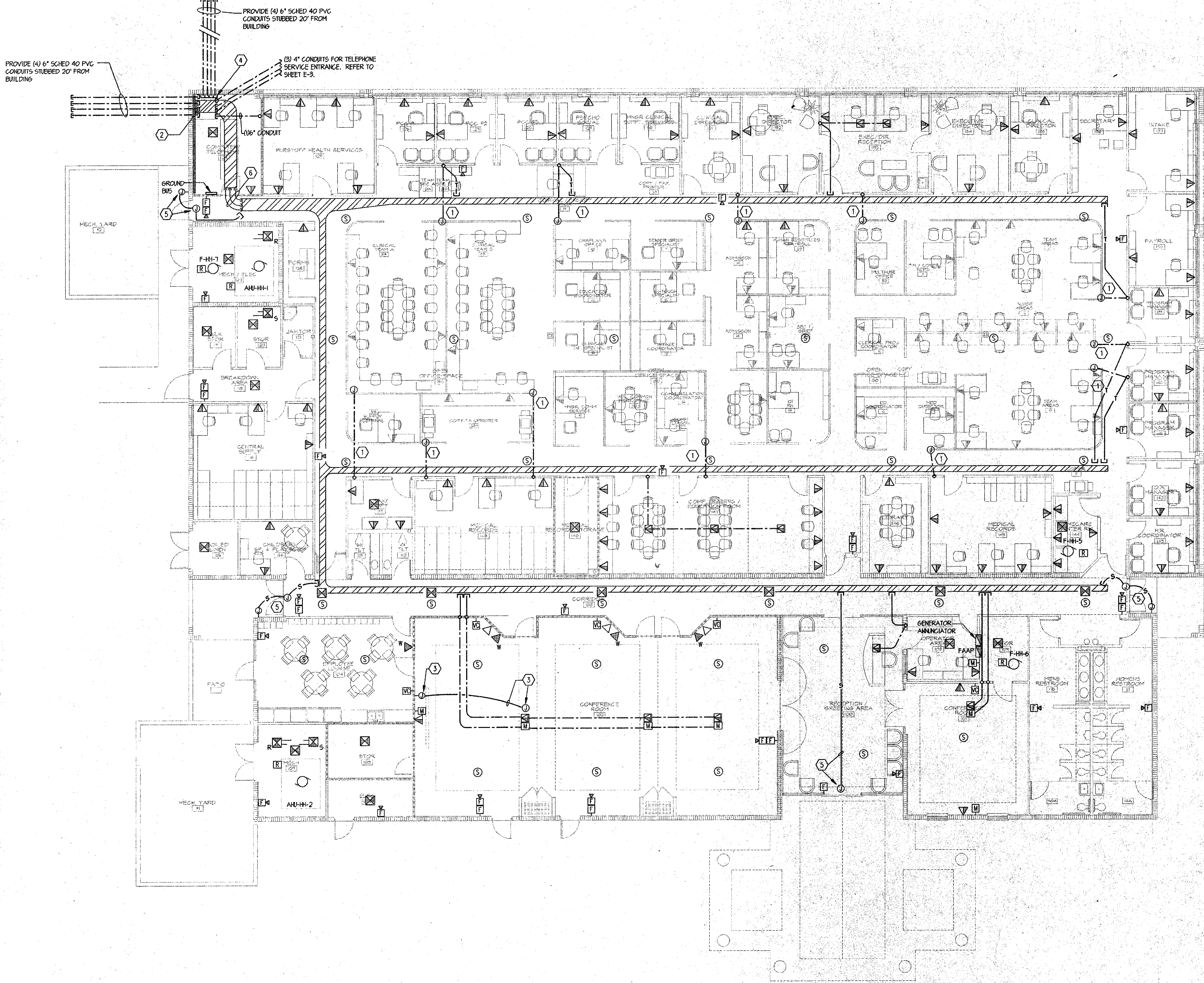
**SITE PLAN - ELECTRICAL**

drawn MAG 06/28/19 checked RDD approved W.T.J.

job no. 596004

**E-3**

sheet 3 of 9



- SYSTEMS PLAN NOTES:**
- 1 PROVIDE CONNECTION TO FURNITURE SYSTEM. PROVIDE JUNCTION BOX IN SLAB AND RUN 1" CONDUIT FROM BOX IN SLAB TO NEAREST HALL AND RISE IN HALL ABOVE CEILING. TERMINATE CONDUIT AT CABLE TRAY. COORDINATE EXACT LOCATIONS OF FURNITURE CONNECTION POINTS WITH FURNITURE MANUFACTURER PRIOR TO INSTALLATION.
  - 2 PROVIDE 24" WIDE VERTICAL CABLE TRAY FROM OVERHEAD CABLE TRAY DOWN HALL INTO HIRING PIT. PROVIDE RADIUS TRANSITION FROM HORIZONTAL TRAY TO VERTICAL TRAY.
  - 3 PROVIDE CEILING MOUNTED 2-GANG JUNCTION BOX AT CEILING MOUNTED VCR LOCATION AND PROVIDE 2-GANG WALL MOUNTED JUNCTION BOX 18" AFF. IN FRONT OF ROOM AT LOCATION SHOWN. PROVIDE EMPTY 3/4" CONDUIT FROM CEILING J-BOX TO HALL J-BOX. PROVIDE COVERPLATES FOR J-BOXES AND PROVIDE CONDUIT WITH FULL STRING.
  - 4 ALL CONDUITS TERMINATING IN HIRING PIT SHALL ENTER AT SIDE OF PIT, NOT BOTTOM OF PIT. COORDINATE FINAL CONDUIT HEIGHT WITH RESPECT TO FINISHED GRADE IN FIELD.
  - 5 PROVIDE J-BOX ABOVE CEILING AND J-BOX FLUSH IN HALL 48" AFF (WHERE INDICATED) FOR OWNER PROVIDED SECURITY SYSTEM. PROVIDE EMPTY 3/4" CONDUIT TO CABLE TRAY AS INDICATED.
  - 6 PROVIDE (6) 4" CONDUITS FOR PENETRATION OF RATED WALL FROM CABLE TRAY. REFER TO DETAIL ON SHEET E-8.

**FLOOR PLAN - SYSTEMS**

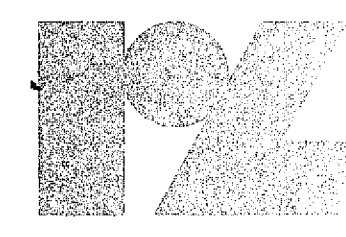
NORTH 1/8" = 1'-0"

**NEW OFFICE BUILDING FOR  
BREVARD HOSPICE & BREVARD HOMECARE  
WUESTHOFF HEALTH SERVICES, VIERA**

**FLOOR PLAN - SYSTEMS**

drawn MAG 06/28/98 checked RDD approved PNTJ

Job no. 596004  
**E-6**  
sheet 6 of 10



**TLC** Tilden Lobnitz Cooper  
Engineering for Architecture  
1717 S. Orange Avenue  
Orlando, Florida 32806, (407) 841-9050