



**AVAILABLE FOR SUBLEASE**

**15500 Lundy Parkway | Dearborn, MI**

# 15500 Lundy Parkway Dearborn, Michigan

## Available For Sublease

### OFFICE

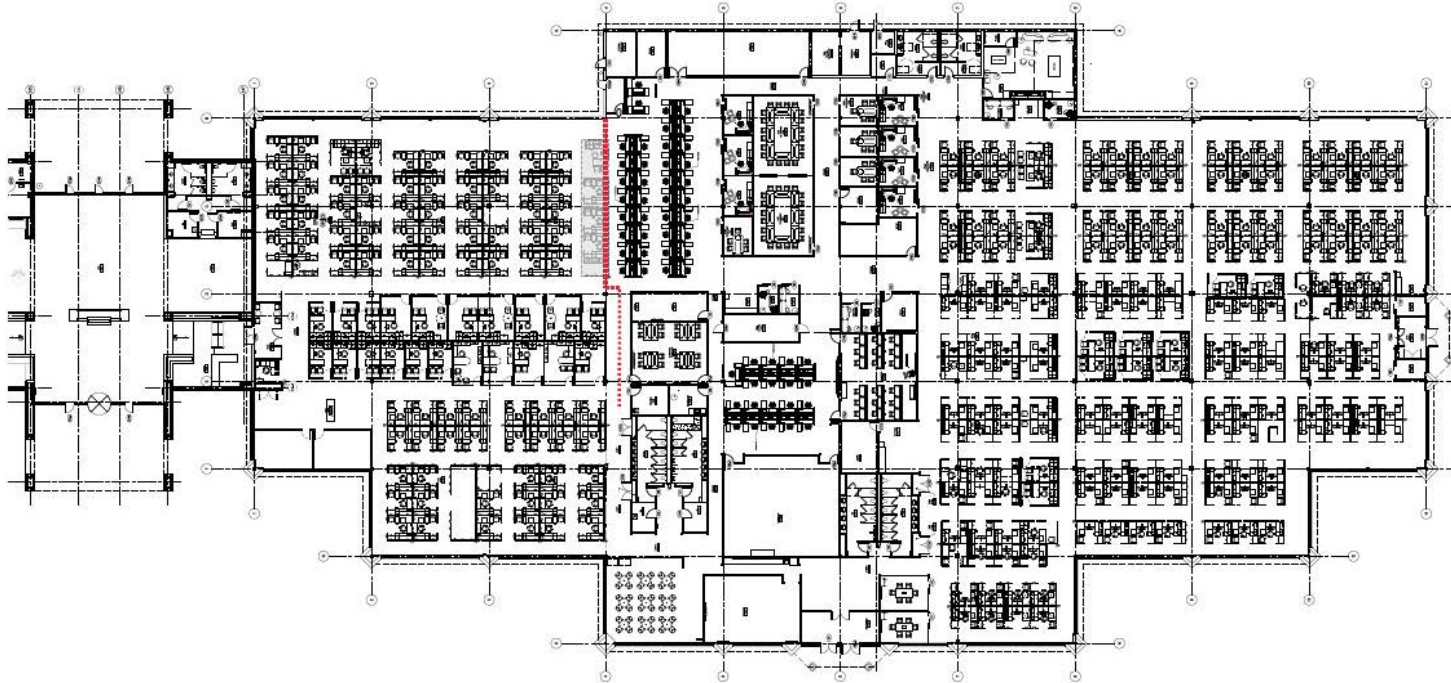
Space Size:	75,244 SF <i>*Could be combined with 15700 Lundy Parkway to create 142,698 SF</i>
Parking:	419
Parking Ratio:	5.59/1000
Year Built:	2001
Previous Use:	Call center and administrative offices
Existing Zoning Class:	Commercial
Expiration Date	March 31, 2029 <i>*Plug 'N' Play furniture available</i>
Rent	TBD



Site Plan Map



# Current Floor Plan



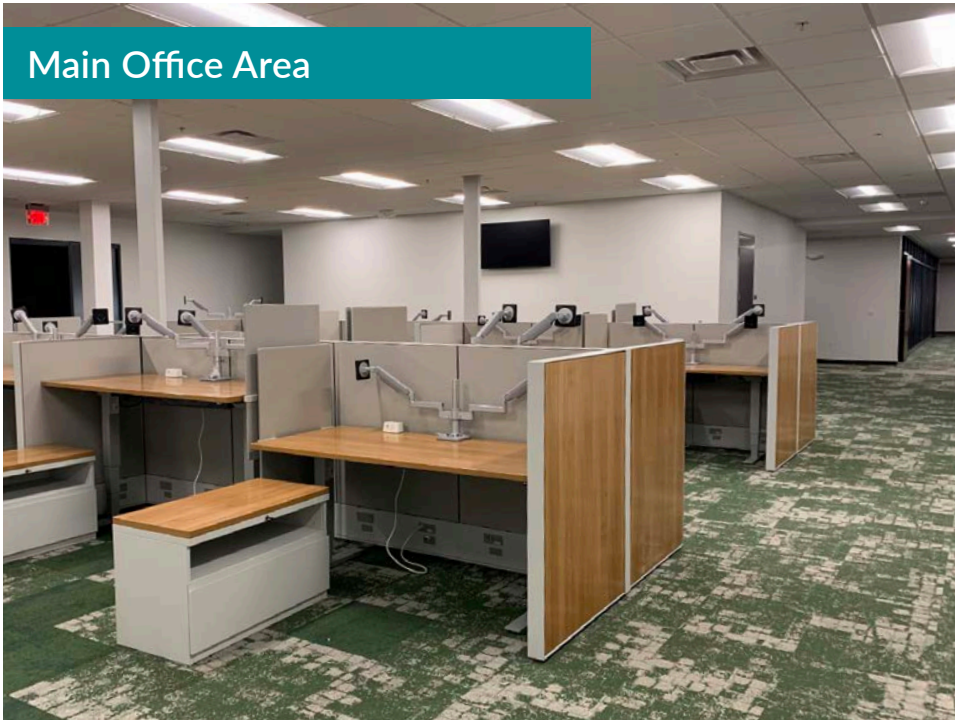
Building Entrance



Building Lobby



Main Office Area



Multiple Conference Rooms



Café



Training Room



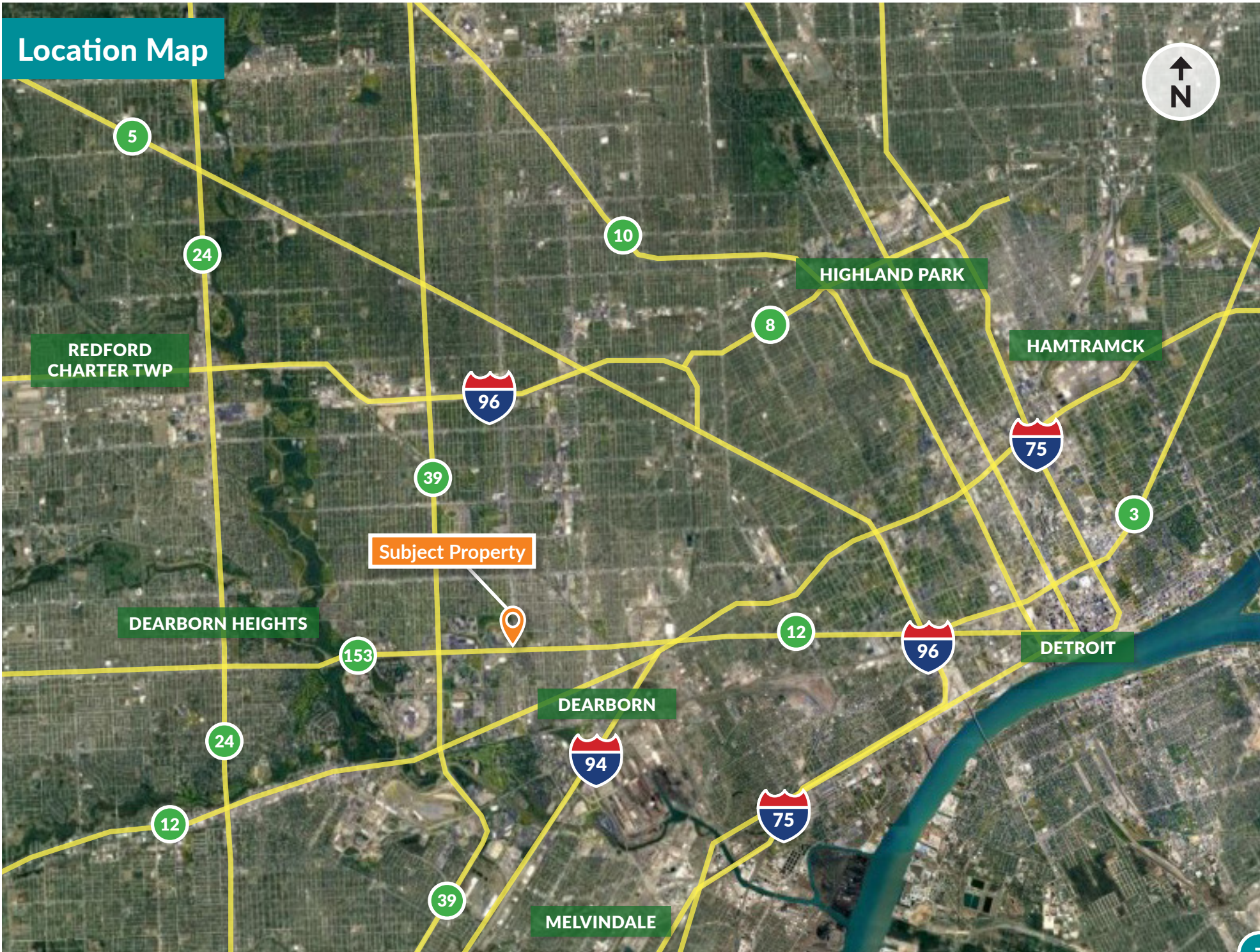
Multiple Private Offices



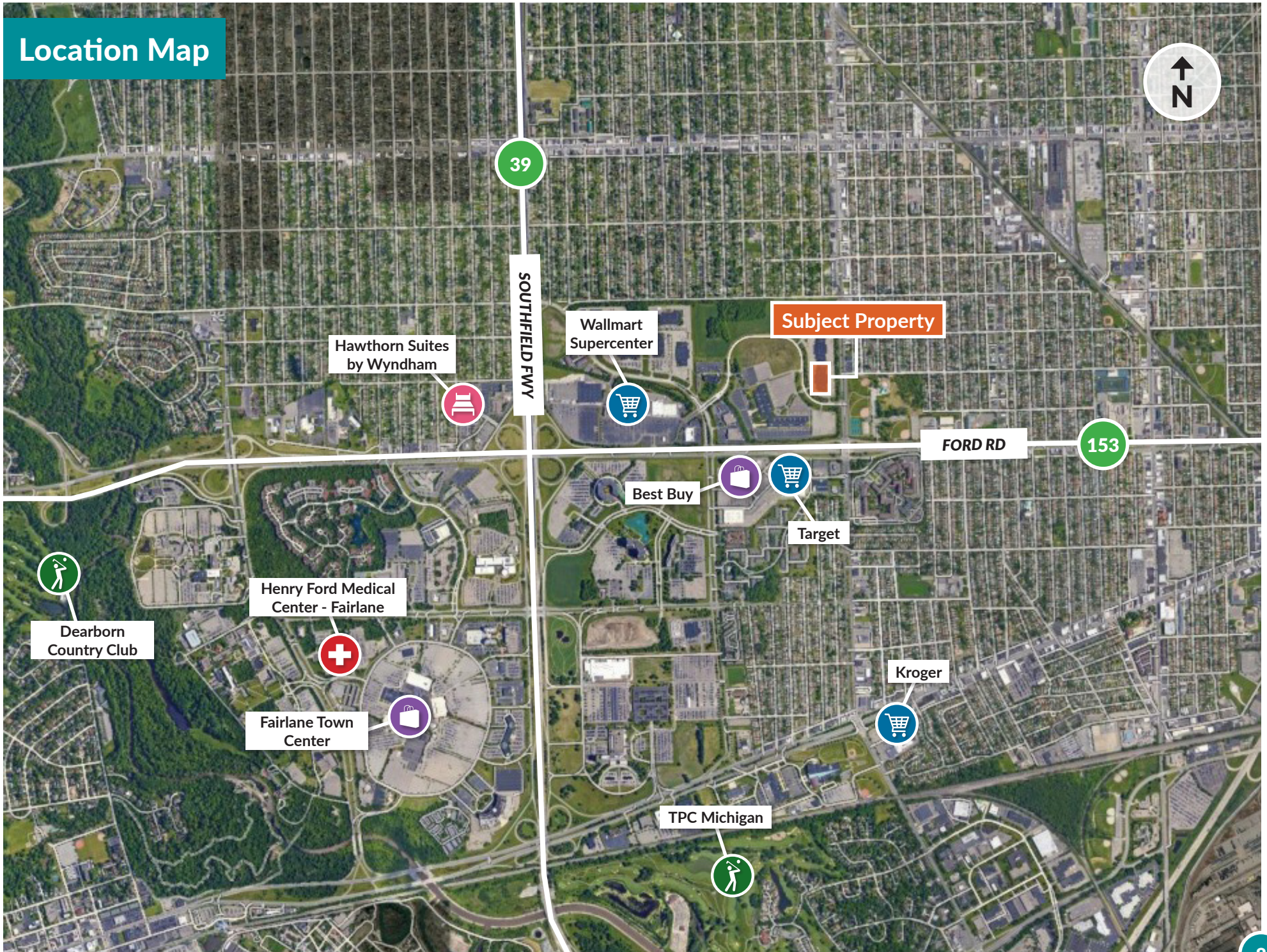
Full Back-Up Generators



# Location Map



# Location Map







***For more information, contact:*** \_\_\_\_\_

**RICK PIFER**

Principal

Plante Moran Cresa

248 223 3698

[Richard.Pifer@plantemoran.com](mailto:Richard.Pifer@plantemoran.com)

**TONY SORGI**

Vice President

Plante Moran Cresa

248 603 5380

[Tony.Sorgi@plantemoran.com](mailto:Tony.Sorgi@plantemoran.com)

---

All rights reserved. This information has been obtained from sources believed reliable, but has not been verified for accuracy or completeness. Any projections, opinions, or estimates are subject to uncertainty. The information may not represent the current or future performance of the property. You and your advisors should conduct a careful, independent investigation of the property and verify all information. Any reliance on this information is solely at your own risk. All marks displayed on this document are the property of their respective owners. Photos herein are the property of their respective owners and use of these images without the express written consent of the owner is prohibited.