

Goldenwest Corporate Campus



5151 S 375 E
Washington Terrace, Utah 84405



3rd Floor: **21,776** RSF



Building Highlights



108,880 RSF
5 Stories



Delivering
Q4 2023



21,776 RSF
Available



\$28.50/SF
NNN



Ample
Parking



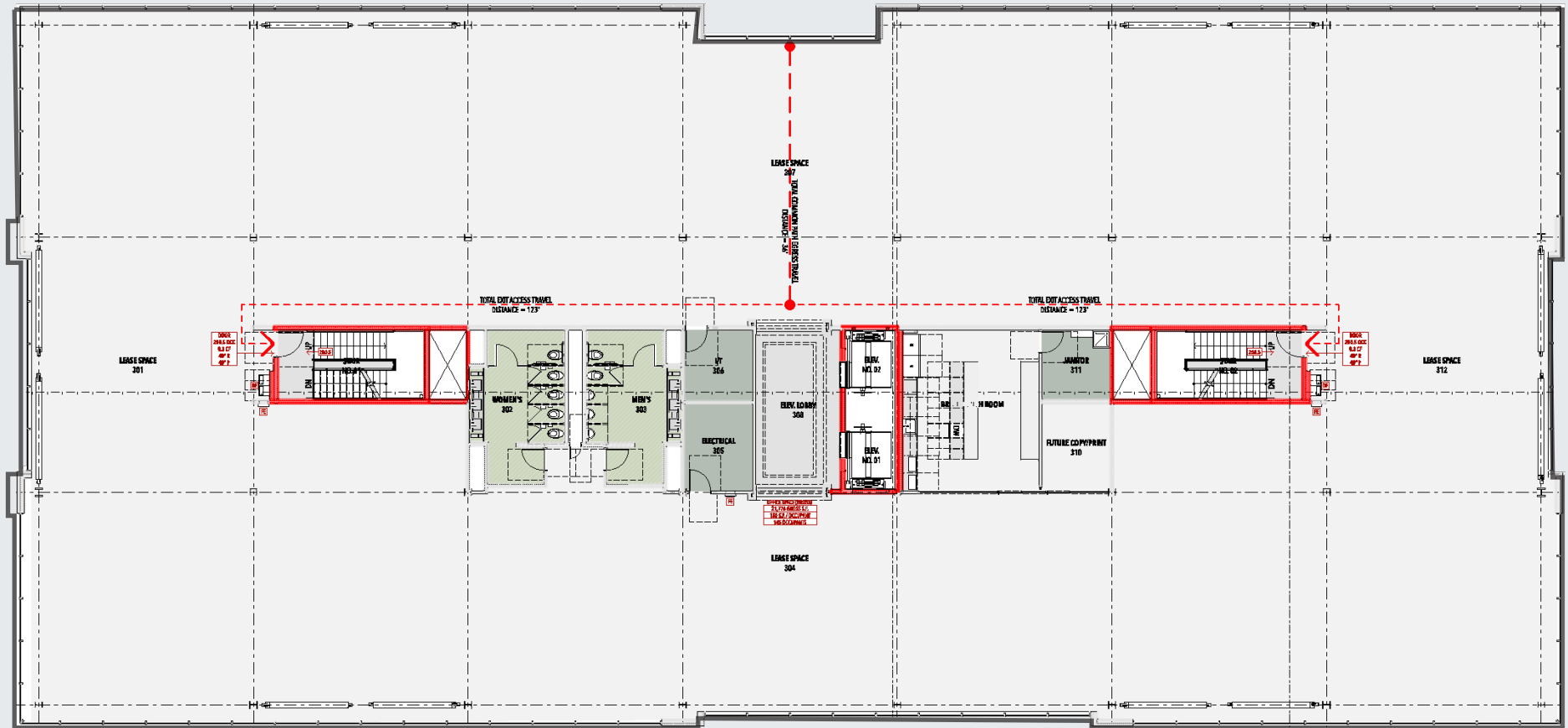
Amazing 360 Degree Views of
Weber County



High Performance,
Low Energy Use
Building

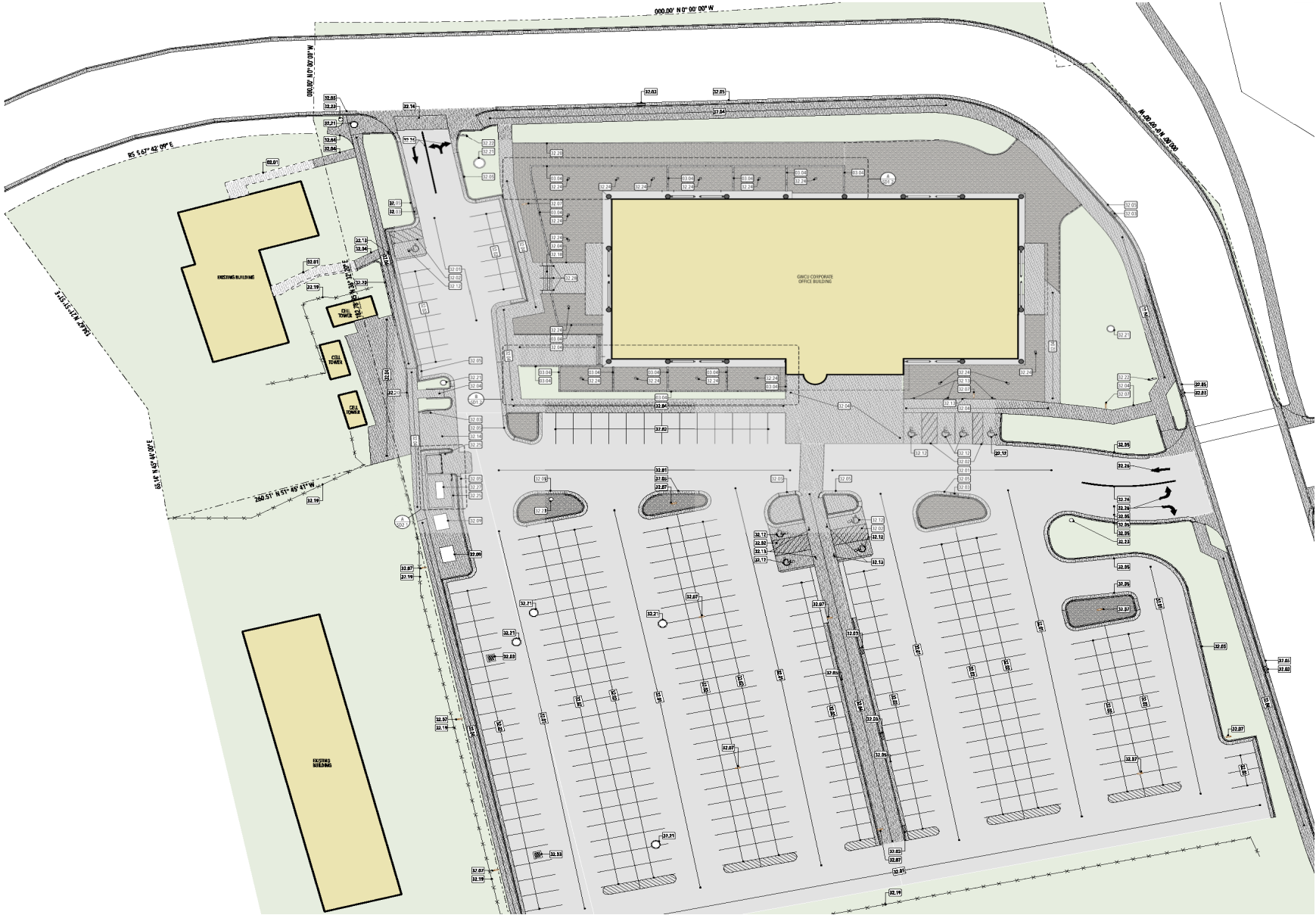


Floor to
Ceiling Glass



Floor Plan

Floor 3: 21,776 RSF Available

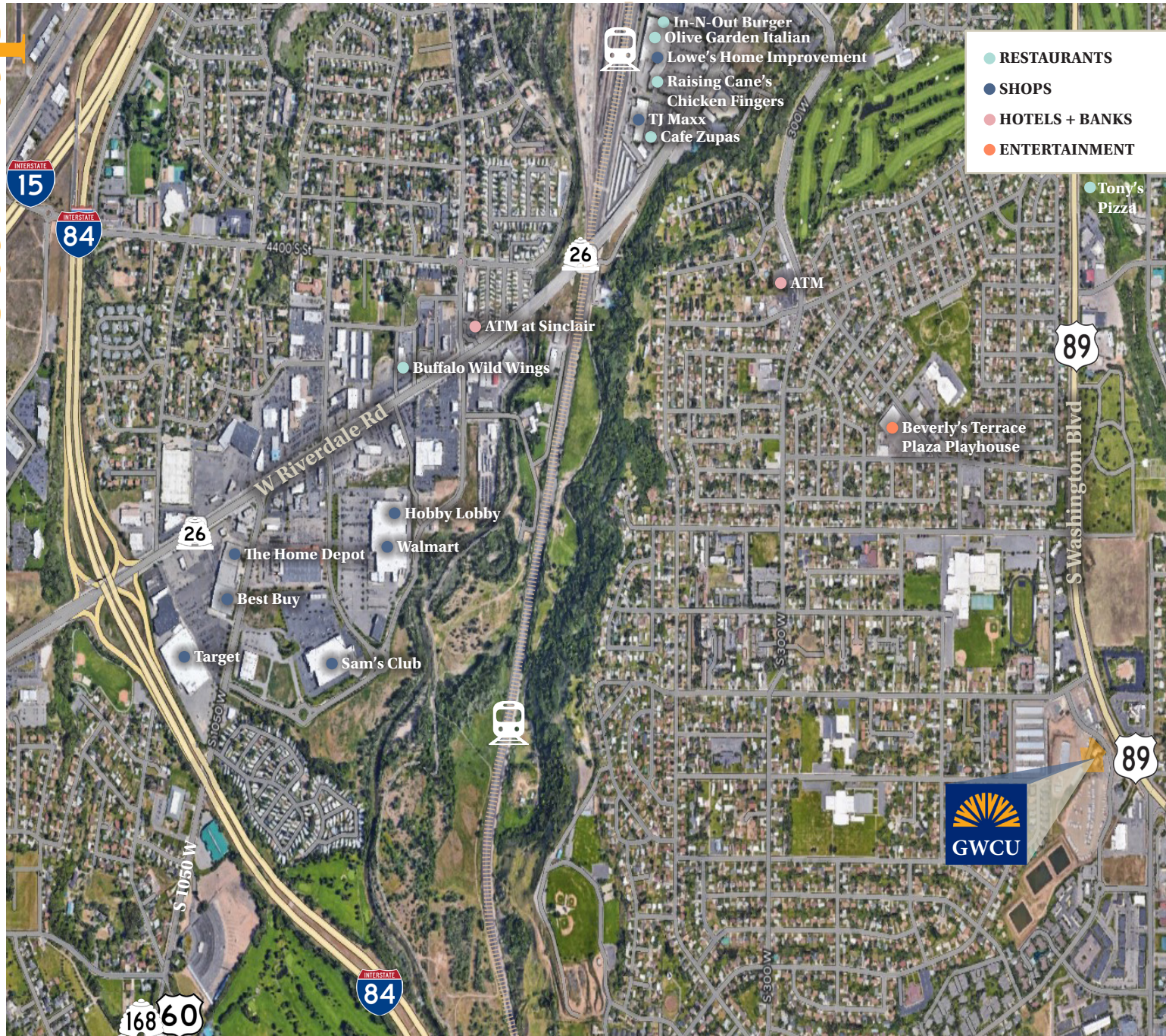


Site Plan

108,880 RSF



Area Map



Easy
Access to
**I-84,
I-15 &
Hwy 89**

Conveniently
located
near
shopping
centers and
restaurants



Bronson Rawlins
+ 1 801 456 9513
bronson.rawlins@jll.com

Brandon Rawlins
+ 1 801 456 9521
brandon.rawlins@jll.com

David Nixon
+ 1 801 456 9518
david.nixon@jll.com