

PALM LAKE AT TAMPA PALMS

15310 Amberly Drive
Tampa, FL 33647

Class 'A' Office Space For Lease

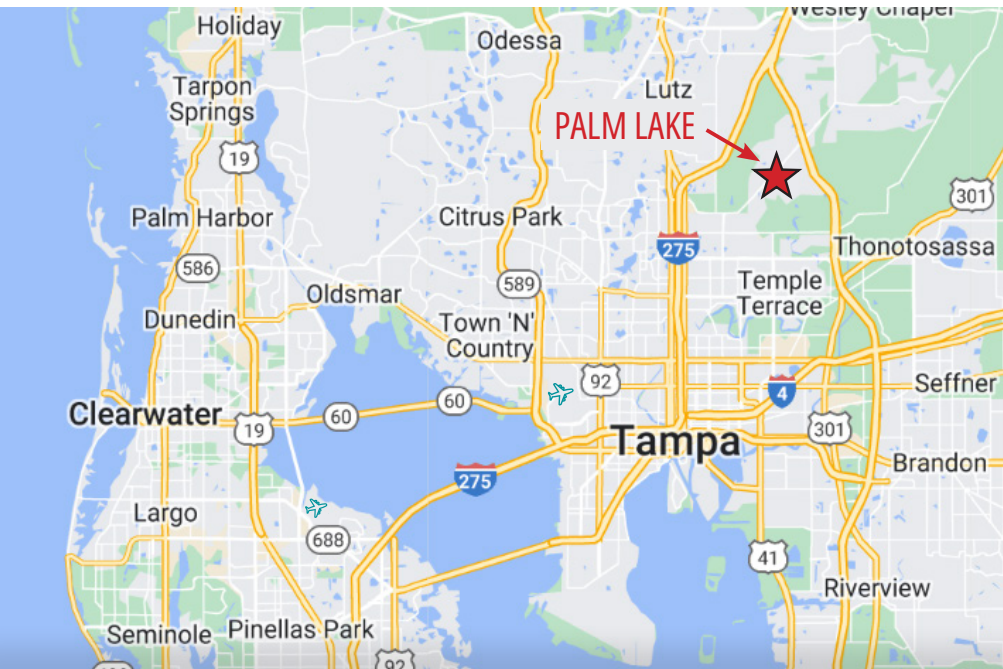


AVAILABLE SUITES

SUITE	SIZE (RSF)	AVAILABLE
195	2,097	Available Now
320	2,209	Available Now

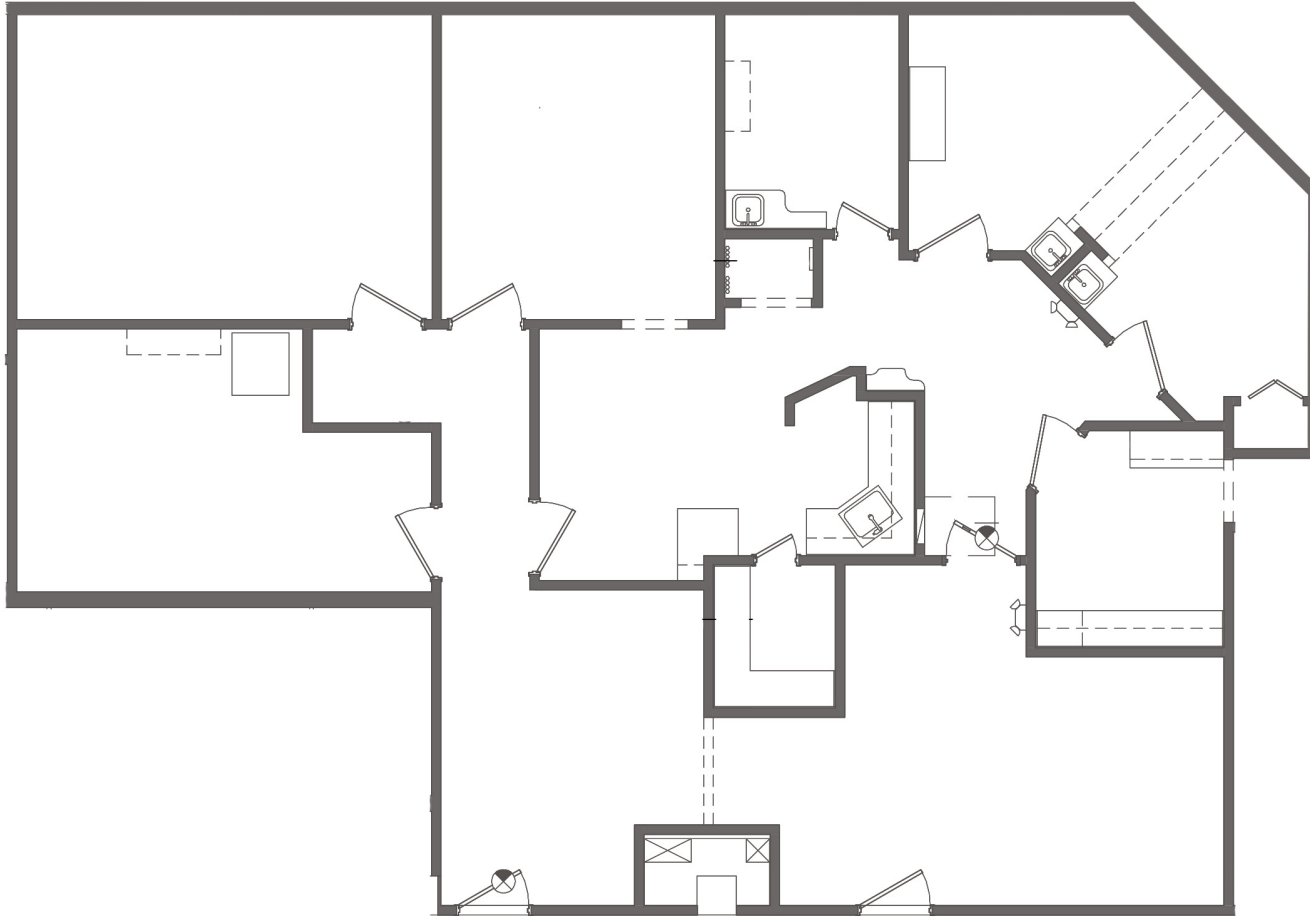
PROPERTY HIGHLIGHTS

- Move-in ready condition with upgraded finishes & glass wall inserts
- Spectacular view of lake & cascading water feature
- Motion-activated light system
- Free parking at a ratio of 4 spaces / 1,000 SF leased
- Secure building with 24/7 tenant access via Regus
- On-site property management
- Convenient access to I-75, I-275, University of South Florida, and Florida Hospital-Tampa

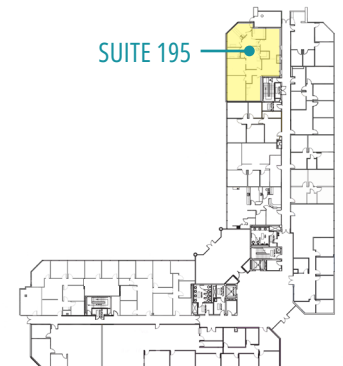


SUITE 195: 2,097 RSF

Great For Medical Use - Prior Dental Surgery Suite

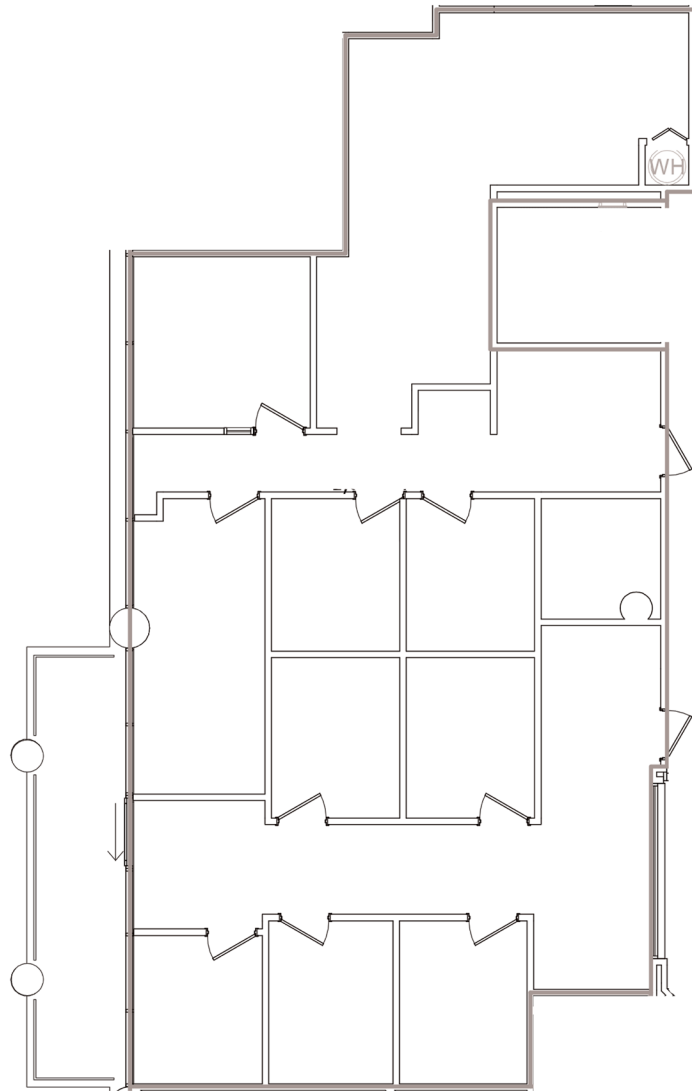


1ST FLOOR PLAN

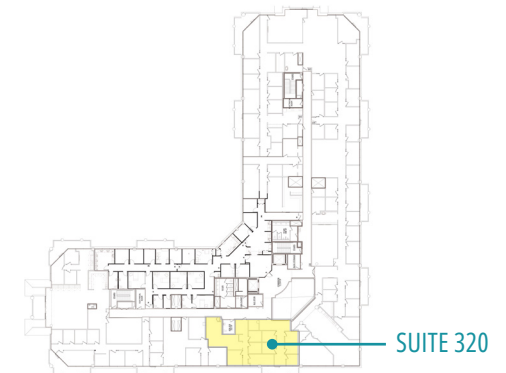


No warranty or representation, expressed or implied, is made to the accuracy of information contained herein, and same is submitted subject to errors, change of price, rental or other conditions, withdrawal without notice, and to any special listing conditions imposed by our principals. PLANS NOT TO SCALE

SUITE 320: 2,209 RSF



3RD FLOOR PLAN



No warranty or representation, expressed or implied, is made to the accuracy of information contained herein, and same is submitted subject to errors, change of price, rental or other conditions, withdrawal without notice, and to any special listing conditions imposed by our principals. PLANS NOT TO SCALE