

Property For Lease

# 2373 Hempstead Turnpike

2373 Hempstead Turnpike East Meadow, NY 11554



For More Information:



### Christopher Pesce

Associate Broker  
Douglas Elliman Commercial - Long Island  
631.858.2470  
christopher.pesce@elliman.com



### Kenneth Hester

Licensed Real Estate Salesperson  
Douglas Elliman Commercial - Long Island  
516.641.0342  
kenneth.hester@elliman.com



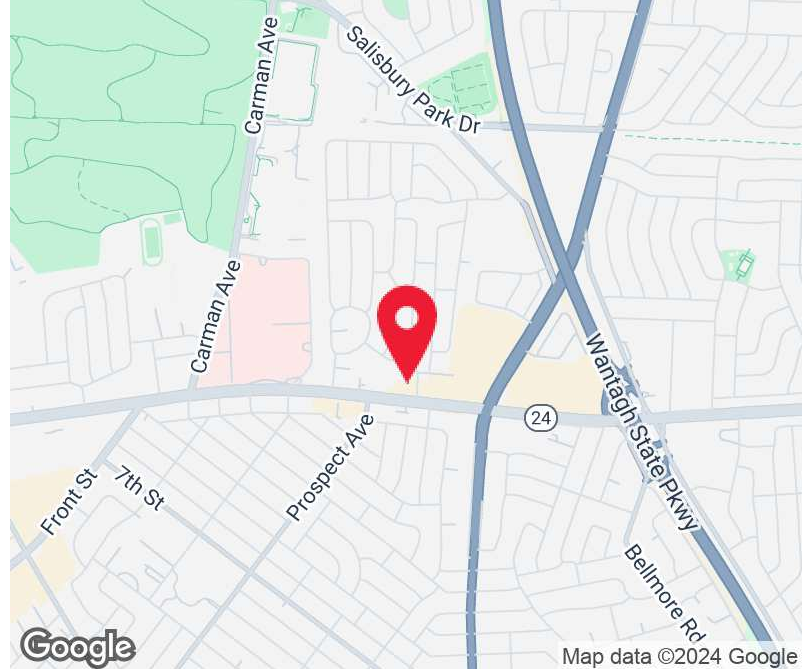
[WWW.ELLIMANCOMMERCIAL.COM](http://WWW.ELLIMANCOMMERCIAL.COM)

THE PROPERTY CONTAINED WITHIN THIS DOCUMENT IS BEING EXCLUSIVELY REPRESENTED BY DOUGLAS ELLIMAN REAL ESTATE COMMERCIAL DIVISION, 650 SMITHTOWN BYPASS STE. 117 SMITHTOWN, NY 11787 631.858.2405 © 2023 DOUGLAS ELLIMAN COMMERCIAL OF LI, L.L.C. ALL MATERIAL PRESENTED HEREIN IS INTENDED FOR INFORMATION PURPOSES ONLY. WHILE THIS INFORMATION IS BELIEVED TO BE CORRECT, IT IS REPRESENTED SUBJECT TO ERRORS, OMISSIONS, CHANGES OR WITHDRAWAL WITHOUT NOTICE. ALL PROPERTY INFORMATION, INCLUDING, BUT NOT LIMITED TO SQUARE FOOTAGE, ROOM COUNT, ZONING IN THE LISTING SHOULD BE VERIFIED BY YOUR OWN ATTORNEY, ARCHITECT OR ZONING EXPERT. IF YOUR PROPERTY IS CURRENTLY LISTED WITH ANOTHER REAL ESTATE BROKER, PLEASE DISREGARD THIS OFFER. IT IS NOT OUR INTENTION TO SOLICIT THE OFFERINGS OF OTHER REAL ESTATE BROKERS. WE COOPERATE WITH THEM FULLY. EQUAL HOUSING OPPORTUNITY.



# Retail Property For Lease

## 2373 Hempstead Turnpike East Meadow, NY 11554



Offering Summary	
Lease Rate:	\$35.00 NNN
Building Size:	12,987 SF
Available SF:	2,000 - 4,000 SF
Zoning	Business X
Number of Units:	6

### Property Overview

+/- 2,000 - 4,000 SF Retail / Medical / Office Space Available for Lease on busy Hempstead Turnpike in East Meadow! Incredible brand recognition with Over 49,000+ vehicles per day passing this location! It's no wonder why this property is surrounded by many national tenants. The space consists of +/-2,000 SF on the ground level and +/-2,000 SF on the Lower Level with access by stairs and chair lift. Ample parking with over 80 parking spaces. The space was previously a surgical center for animals. For more information, contact us at 631-858-2470.

### Property Highlights

- 49,000+ vehicles per day pass this location
- Surrounded by National Tenants
- Over 80 parking spaces

For More Information:



**Christopher Pesce**

Associate Broker  
 Douglas Elliman Commercial - Long Island  
 631.858.2470  
 christopher.pesce@elliman.com



**Kenneth Hester**

Licensed Real Estate Salesperson  
 Douglas Elliman Commercial - Long Island  
 516.641.0342  
 kenneth.hester@elliman.com



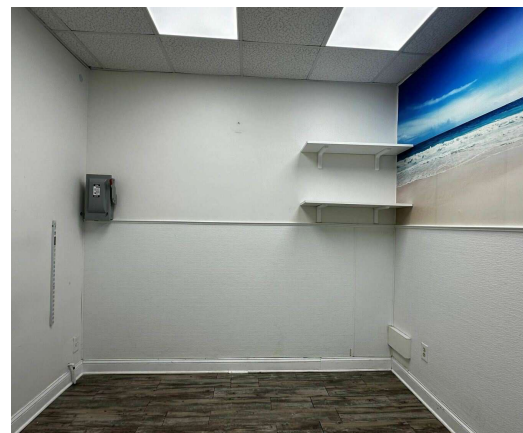
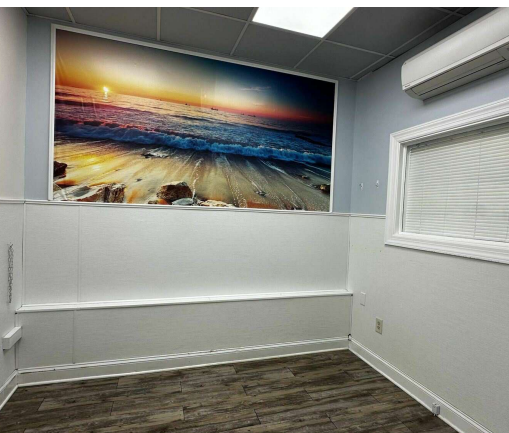
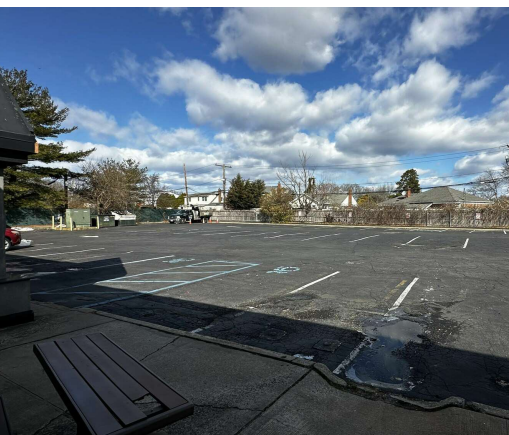
[WWW.ELLIMANCOMMERCIAL.COM](http://WWW.ELLIMANCOMMERCIAL.COM)

THE PROPERTY CONTAINED WITHIN THIS DOCUMENT IS BEING EXCLUSIVELY REPRESENTED BY DOUGLAS ELLIMAN REAL ESTATE COMMERCIAL DIVISION, 550 SMITHTOWN BYPASS STE. 117 SMITHTOWN, NY 11787 631.858.2405 © 2023 DOUGLAS ELLIMAN COMMERCIAL OF LI, L.L.C. ALL MATERIAL PRESENTED HEREIN IS INTENDED FOR INFORMATION PURPOSES ONLY. WHILE THIS INFORMATION IS BELIEVED TO BE CORRECT, IT IS REPRESENTED SUBJECT TO ERRORS, OMISSIONS, CHANGES OR WITHDRAWAL WITHOUT NOTICE. ALL PROPERTY INFORMATION, INCLUDING, BUT NOT LIMITED TO SQUARE FOOTAGE, ROOM COUNT, ZONING IN THE LISTING SHOULD BE VERIFIED BY YOUR OWN ATTORNEY, ARCHITECT OR ZONING EXPERT. IF YOUR PROPERTY IS CURRENTLY LISTED WITH ANOTHER REAL ESTATE BROKER, PLEASE DISREGARD THIS OFFER. IT IS NOT OUR INTENTION TO SOLICIT THE OFFERINGS OF OTHER REAL ESTATE BROKERS. WE COOPERATE WITH THEM FULLY. EQUAL HOUSING OPPORTUNITY.



# Retail Property For Lease

## 2373 Hempstead Turnpike East Meadow, NY 11554



For More Information:

**Christopher Pesce**

Associate Broker  
Douglas Elliman Commercial - Long Island  
631.858.2470  
christopher.pesce@elliman.com



**Kenneth Hester**

Licensed Real Estate Salesperson  
Douglas Elliman Commercial - Long Island  
516.641.0342  
kenneth.hester@elliman.com



**Douglas Elliman**  
Commercial



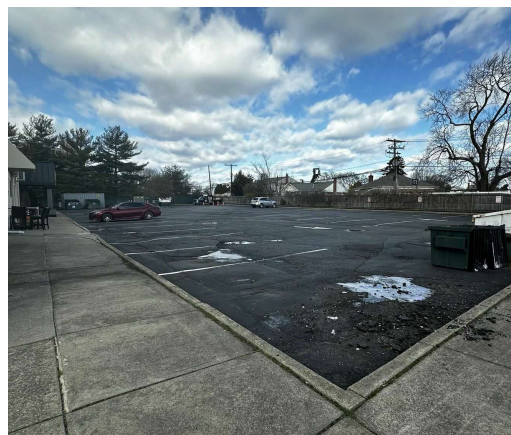
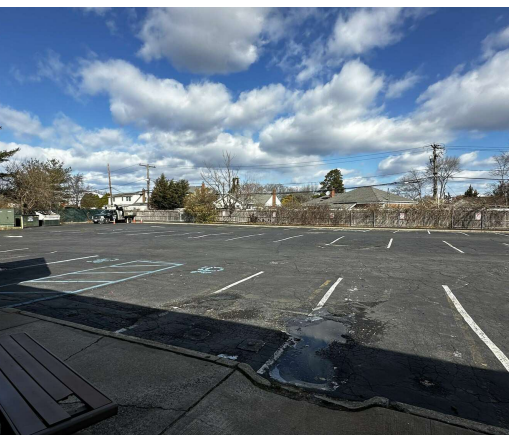
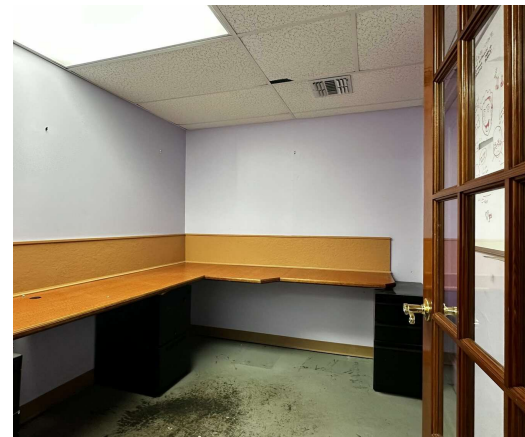
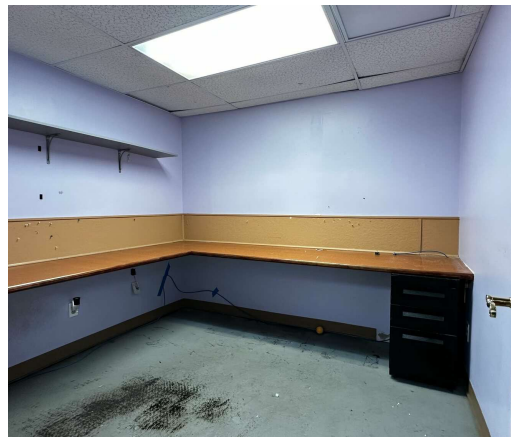
[WWW.ELLIMANCOMMERCIAL.COM](http://WWW.ELLIMANCOMMERCIAL.COM)

THE PROPERTY CONTAINED WITHIN THIS DOCUMENT IS BEING EXCLUSIVELY REPRESENTED BY DOUGLAS ELLIMAN REAL ESTATE COMMERCIAL DIVISION, 550 SMITHTOWN BYPASS STE. 117 SMITHTOWN, NY 11787 631.858.2405 © 2023 DOUGLAS ELLIMAN COMMERCIAL OF LI, L.L.C. ALL MATERIAL PRESENTED HEREIN IS INTENDED FOR INFORMATION PURPOSES ONLY. WHILE THIS INFORMATION IS BELIEVED TO BE CORRECT, IT IS REPRESENTED SUBJECT TO ERRORS, OMISSIONS, CHANGES OR WITHDRAWAL WITHOUT NOTICE. ALL PROPERTY INFORMATION, INCLUDING, BUT NOT LIMITED TO SQUARE FOOTAGE, ROOM COUNT, ZONING IN THE LISTING SHOULD BE VERIFIED BY YOUR OWN ATTORNEY, ARCHITECT OR ZONING EXPERT. IF YOUR PROPERTY IS CURRENTLY LISTED WITH ANOTHER REAL ESTATE BROKER, PLEASE DISREGARD THIS OFFER. IT IS NOT OUR INTENTION TO SOLICIT THE OFFERINGS OF OTHER REAL ESTATE BROKERS. WE COOPERATE WITH THEM FULLY. EQUAL HOUSING OPPORTUNITY.



# Retail Property For Lease

## 2373 Hempstead Turnpike East Meadow, NY 11554



For More Information:

**Christopher Pesce**

Associate Broker  
Douglas Elliman Commercial - Long Island  
631.858.2470  
christopher.pesce@elliman.com



**Kenneth Hester**

Licensed Real Estate Salesperson  
Douglas Elliman Commercial - Long Island  
516.641.0342  
kenneth.hester@elliman.com



**Douglas Elliman**  
Commercial



[WWW.ELLIMANCOMMERCIAL.COM](http://WWW.ELLIMANCOMMERCIAL.COM)

THE PROPERTY CONTAINED WITHIN THIS DOCUMENT IS BEING EXCLUSIVELY REPRESENTED BY DOUGLAS ELLIMAN REAL ESTATE COMMERCIAL DIVISION, 550 SMITHTOWN BYPASS STE. 117 SMITH-TOWN, NY 11787 631.858.2405 © 2023 DOUGLAS ELLIMAN COMMERCIAL OF LI, L.L.C. ALL MATERIAL PRESENTED HEREIN IS INTENDED FOR INFORMATION PURPOSES ONLY. WHILE THIS INFORMATION IS BELIEVED TO BE CORRECT, IT IS REPRESENTED SUBJECT TO ERRORS, OMISSIONS, CHANGES OR WITHDRAWAL WITHOUT NOTICE. ALL PROPERTY INFORMATION, INCLUDING, BUT NOT LIMITED TO SQUARE FOOTAGE, ROOM COUNT, ZONING IN THE LISTING SHOULD BE VERIFIED BY YOUR OWN ATTORNEY, ARCHITECT OR ZONING EXPERT. IF YOUR PROPERTY IS CURRENTLY LISTED WITH ANOTHER REAL ESTATE BROKER, PLEASE DISREGARD THIS OFFER. IT IS NOT OUR INTENTION TO SOLICIT THE OFFERINGS OF OTHER REAL ESTATE BROKERS. WE COOPERATE WITH THEM FULLY. EQUAL HOUSING OPPORTUNITY.



# Retail Property For Lease

## 2373 Hempstead Turnpike East Meadow, NY 11554



### Lease Information

<b>Lease Type:</b>	MG	<b>Lease Term:</b>	Negotiable
<b>Total Space:</b>	2,000 - 4,000 SF	<b>Lease Rate:</b>	Price Upon Request

### Available Spaces

Suite	Tenant	Size (SF)	Lease Type	Lease Rate	Description
2373	Available	2,000 - 4,000 SF	Modified Gross	Price Upon Request	+/- 2,000 - 4,000 SF Retail / Medical / Office Space Available for Lease on busy Hempstead Turnpike in East Meadow! Incredible brand recognition with Over 49,000+ vehicles per day passing this location! It's no wonder why this property is surrounded by many national tenants. The space consists of +/-2,000 SF on the ground level and +/- 2,000 SF on the Lower Level with access by stairs and chair lift. Ample parking with over 80 parking spaces. The space was previously a surgical center for animals. For more information, contact us at 631-858-2470.

For More Information:



**Christopher Pesce**

Associate Broker  
Douglas Elliman Commercial - Long Island  
631.858.2470  
christopher.pesce@elliman.com



**Kenneth Hester**

Licensed Real Estate Salesperson  
Douglas Elliman Commercial - Long Island  
516.641.0342  
kenneth.hester@elliman.com

Douglas Elliman  
Commercial



[WWW.ELLIMANCOMMERCIAL.COM](http://WWW.ELLIMANCOMMERCIAL.COM)

THE PROPERTY CONTAINED WITHIN THIS DOCUMENT IS BEING EXCLUSIVELY REPRESENTED BY DOUGLAS ELLIMAN REAL ESTATE COMMERCIAL DIVISION, 550 SMITHTOWN BYPASS STE. 117 SMITHTOWN, NY 11787 631.858.2405 © 2023 DOUGLAS ELLIMAN COMMERCIAL OF LI, LLC. ALL MATERIAL PRESENTED HEREIN IS INTENDED FOR INFORMATION PURPOSES ONLY. WHILE THIS INFORMATION IS BELIEVED TO BE CORRECT, IT IS REPRESENTED SUBJECT TO ERRORS, OMISSIONS, CHANGES OR WITHDRAWAL WITHOUT NOTICE. ALL PROPERTY INFORMATION, INCLUDING, BUT NOT LIMITED TO SQUARE FOOTAGE, ROOM COUNT, ZONING IN THE LISTING SHOULD BE VERIFIED BY YOUR OWN ATTORNEY, ARCHITECT OR ZONING EXPERT. IF YOUR PROPERTY IS CURRENTLY LISTED WITH ANOTHER REAL ESTATE BROKER, PLEASE DISREGARD THIS OFFER. IT IS NOT OUR INTENTION TO SOLICIT THE OFFERINGS OF OTHER REAL ESTATE BROKERS. WE COOPERATE WITH THEM FULLY. EQUAL HOUSING OPPORTUNITY.



# Retail Property For Lease

## 2373 Hempstead Turnpike East Meadow, NY 11554



Map data ©2024 Google Imagery ©2024 Airbus, Maxar Technologies

For More Information:



**Christopher Pesce**

Associate Broker  
Douglas Elliman Commercial - Long Island  
631.858.2470  
christopher.pesce@elliman.com



**Kenneth Hester**

Licensed Real Estate Salesperson  
Douglas Elliman Commercial - Long Island  
516.641.0342  
kenneth.hester@elliman.com

**Douglas Elliman**  
Commercial



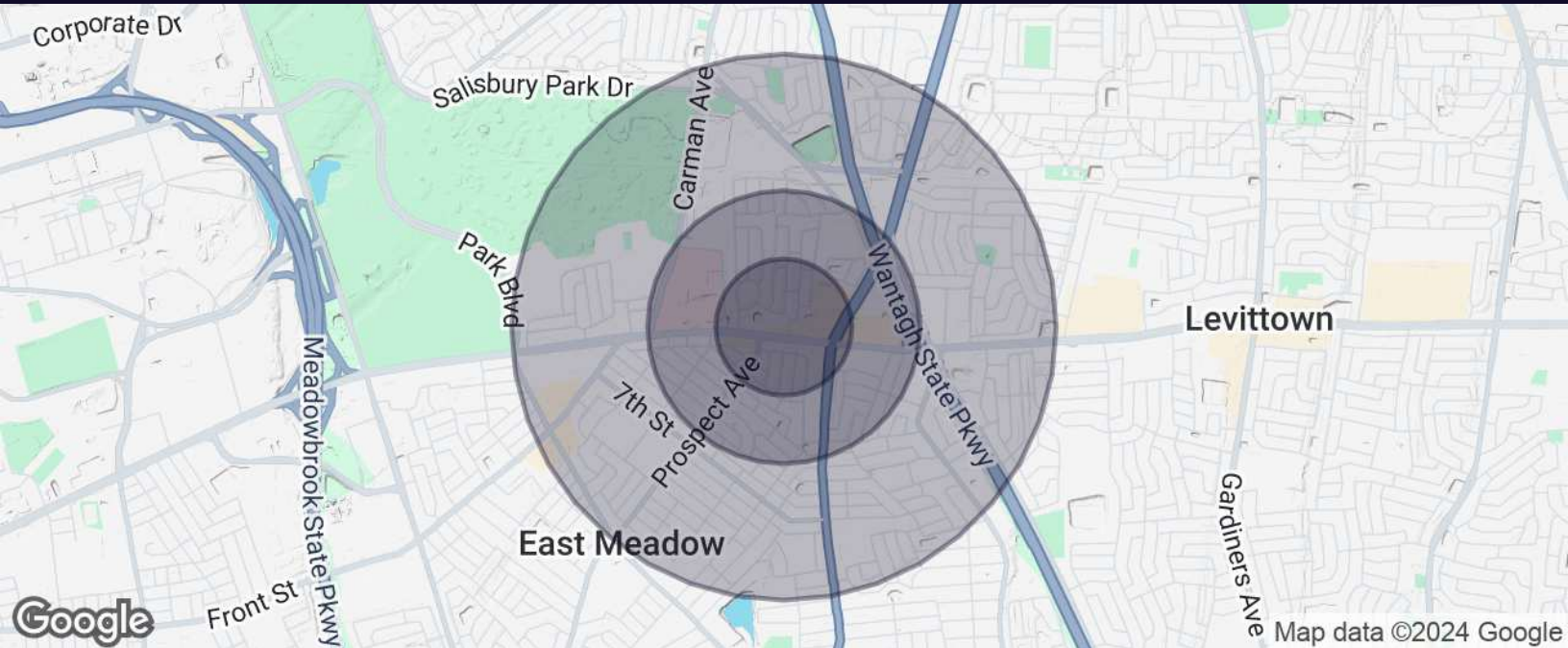
[WWW.ELLIMANCOMMERCIAL.COM](http://WWW.ELLIMANCOMMERCIAL.COM)

THE PROPERTY CONTAINED WITHIN THIS DOCUMENT IS BEING EXCLUSIVELY REPRESENTED BY DOUGLAS ELLIMAN REAL ESTATE COMMERCIAL DIVISION, 550 SMITHTOWN BYPASS STE. 117 SMITHTOWN, NY 11787 631.858.2405 © 2023 DOUGLAS ELLIMAN COMMERCIAL OF LI, LLC. ALL MATERIAL PRESENTED HEREIN IS INTENDED FOR INFORMATION PURPOSES ONLY. WHILE THIS INFORMATION IS BELIEVED TO BE CORRECT, IT IS REPRESENTED SUBJECT TO ERRORS, OMISSIONS, CHANGES OR WITHDRAWAL WITHOUT NOTICE. ALL PROPERTY INFORMATION, INCLUDING, BUT NOT LIMITED TO SQUARE FOOTAGE, ROOM COUNT, ZONING IN THE LISTING SHOULD BE VERIFIED BY YOUR OWN ATTORNEY, ARCHITECT OR ZONING EXPERT. IF YOUR PROPERTY IS CURRENTLY LISTED WITH ANOTHER REAL ESTATE BROKER, PLEASE DISREGARD THIS OFFER. IT IS NOT OUR INTENTION TO SOLICIT THE OFFERINGS OF OTHER REAL ESTATE BROKERS. WE COOPERATE WITH THEM FULLY. EQUAL HOUSING OPPORTUNITY.



# Retail Property For Lease

## 2373 Hempstead Turnpike East Meadow, NY 11554



Population	0.25 Miles	0.5 Miles	1 Mile
Total Population	1,592	6,341	20,555
Average Age	46.9	44.8	43.8
Average Age (Male)	45.8	44.5	42.6
Average Age (Female)	45.3	48.4	46.9

Households & Income	0.25 Miles	0.5 Miles	1 Mile
Total Households	456	1,961	6,686
# of Persons per HH	3.5	3.2	3.1
Average HH Income	\$152,640	\$114,643	\$123,917
Average House Value	\$480,141	\$490,634	\$459,820

For More Information:



**Christopher Pesce**

Associate Broker  
Douglas Elliman Commercial - Long Island  
631.858.2470  
christopher.pesce@elliman.com



**Kenneth Hester**

Licensed Real Estate Salesperson  
Douglas Elliman Commercial - Long Island  
516.641.0342  
kenneth.hester@elliman.com

Douglas Elliman  
Commercial



[WWW.ELLIMANCOMMERCIAL.COM](http://WWW.ELLIMANCOMMERCIAL.COM)

THE PROPERTY CONTAINED WITHIN THIS DOCUMENT IS BEING EXCLUSIVELY REPRESENTED BY DOUGLAS ELLIMAN REAL ESTATE COMMERCIAL DIVISION, 550 SMITHTOWN BYPASS STE. 117 SMITHTOWN, NY 11787 631.858.2405 © 2023 DOUGLAS ELLIMAN COMMERCIAL OF LI, L.L.C. ALL MATERIAL PRESENTED HEREIN IS INTENDED FOR INFORMATION PURPOSES ONLY. WHILE THIS INFORMATION IS BELIEVED TO BE CORRECT, IT IS REPRESENTED SUBJECT TO ERRORS, OMISSIONS, CHANGES OR WITHDRAWAL WITHOUT NOTICE. ALL PROPERTY INFORMATION, INCLUDING, BUT NOT LIMITED TO SQUARE FOOTAGE, ROOM COUNT, ZONING IN THE LISTING SHOULD BE VERIFIED BY YOUR OWN ATTORNEY, ARCHITECT OR ZONING EXPERT. IF YOUR PROPERTY IS CURRENTLY LISTED WITH ANOTHER REAL ESTATE BROKER, PLEASE DISREGARD THIS OFFER. IT IS NOT OUR INTENTION TO SOLICIT THE OFFERINGS OF OTHER REAL ESTATE BROKERS. WE COOPERATE WITH THEM FULLY. EQUAL HOUSING OPPORTUNITY.



## WE ARE COMMERCIAL REAL ESTATE

Commercial real estate involves more than just property listings. To get the most effective results, you need to partner with a company that has a full complement of services and an in-depth team of professionals to help with all of your needs. Douglas Elliman's team of commercial real estate experts is committed to unrivaled performance standards when working with tenants, investors, purchasers and owners. We represent all major property types including office, industrial, retail, apartment and land. We treat each assignment with commitment and focus, from a single transaction in a local market to national and multi-market assignments. We help negotiate contracts, coordinate construction and provide both property management as well as ongoing advisory service to satisfy your changing real estate needs. Our breadth of market knowledge, unprecedented network and use of innovative technology extend to all types of property transactions.

For More Information:



**Christopher Pesce**

Associate Broker  
631.858.2470  
christopher.pesce@elliman.com



**Kenneth Hester**

Licensed Real Estate Salesperson  
516.641.0342  
kenneth.hester@elliman.com

Office: 631.858.2405  
Fax: 631.543.0851  
550 Smithtown Bypass  
Smithtown, NY 11787