

L 1 & L2 - Old Lee Highway Develop...



Presented By:
Real Estate Partners

8002 Old Lee Highway - LOT 1 & LOT 2, Ooltewah, TN 37363



L 1 & L2 - Old Lee Highway Development

8002 Old Lee Highway - LOT 1 & LOT 2, Ooltewah, TN 37363

Property Details

Development on Old Lee Hwy Near Exit 9 on I-75 in Greater Chattanooga MSA

Price: \$850,000

- Visibility from I-75 North and South Bound traffic
- Less than One (1) mile to I-75
- 4.7 miles | Hamilton Place at Exit 5 on I-75

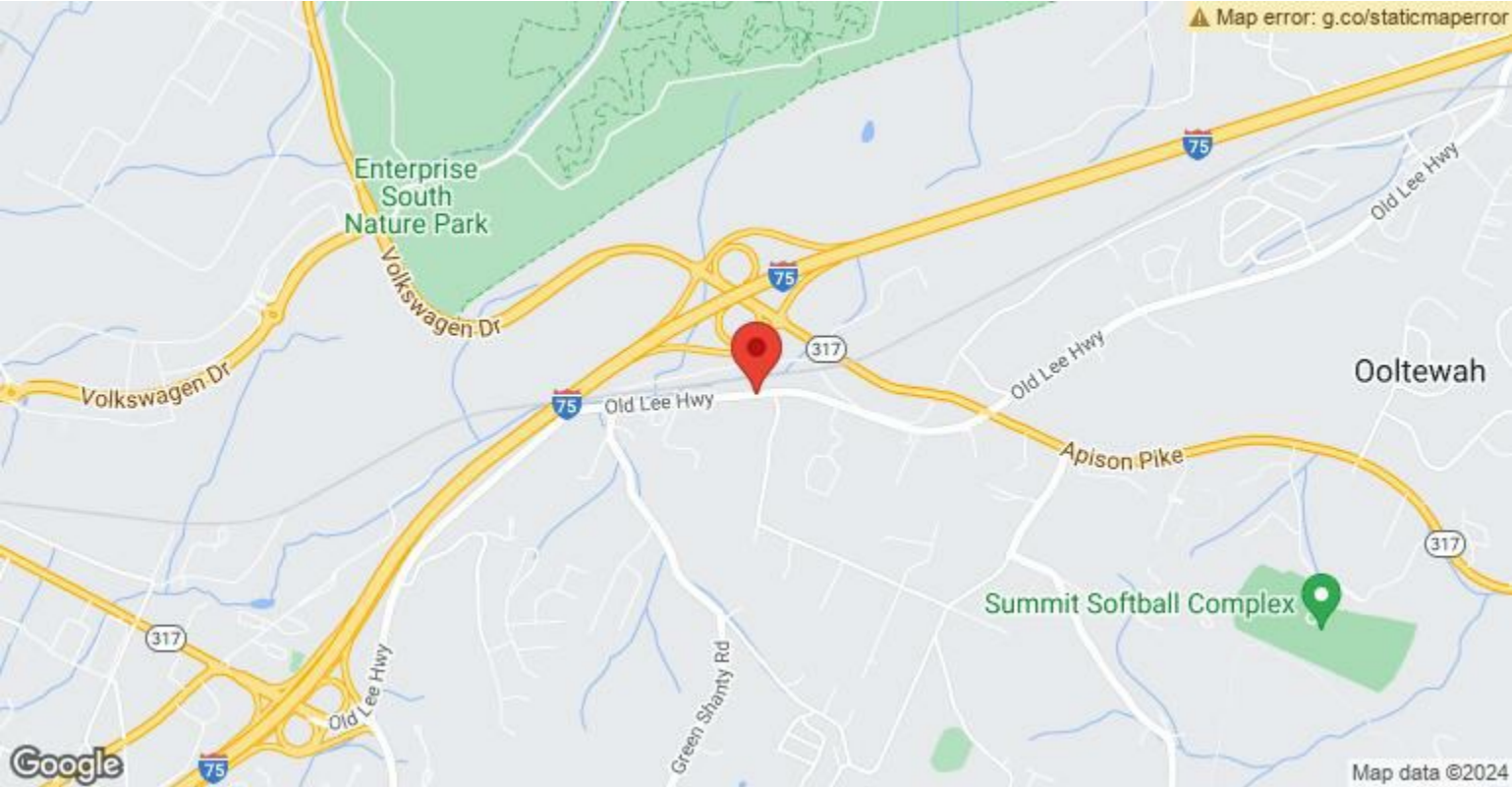
View the full listing here: <https://www.loopnet.com/Listing/8002-Old-Lee-Highway-LOT-1-LOT-2-Ooltewah-TN/30805834/>

Price:	\$850,000
Property Type:	Land
Property Subtype:	Commercial
Proposed Use:	Commercial
Sale Type:	Investment
Total Lot Size:	2.45 AC
No. Lots:	1
Zoning Description:	C-2

L 1 & L2 - Old Lee Highway Development

8002 Old Lee Highway - LOT 1 & LOT 2, Ooltewah, TN 37363

Location



L 1 & L2 - Old Lee Highway Development

8002 Old Lee Highway - LOT 1 & LOT 2, Ooltewah, TN 37363

Property Photos



LOT 1 & 2 _ Interstate Exchange _ I-75 Exit 9



LOT 1 & 2 _ Outline

L 1 & L2 - Old Lee Highway Development

8002 Old Lee Highway - LOT 1 & LOT 2, Ooltewah, TN 37363

Property Photos



Lot 1 & 2 Curb Cut

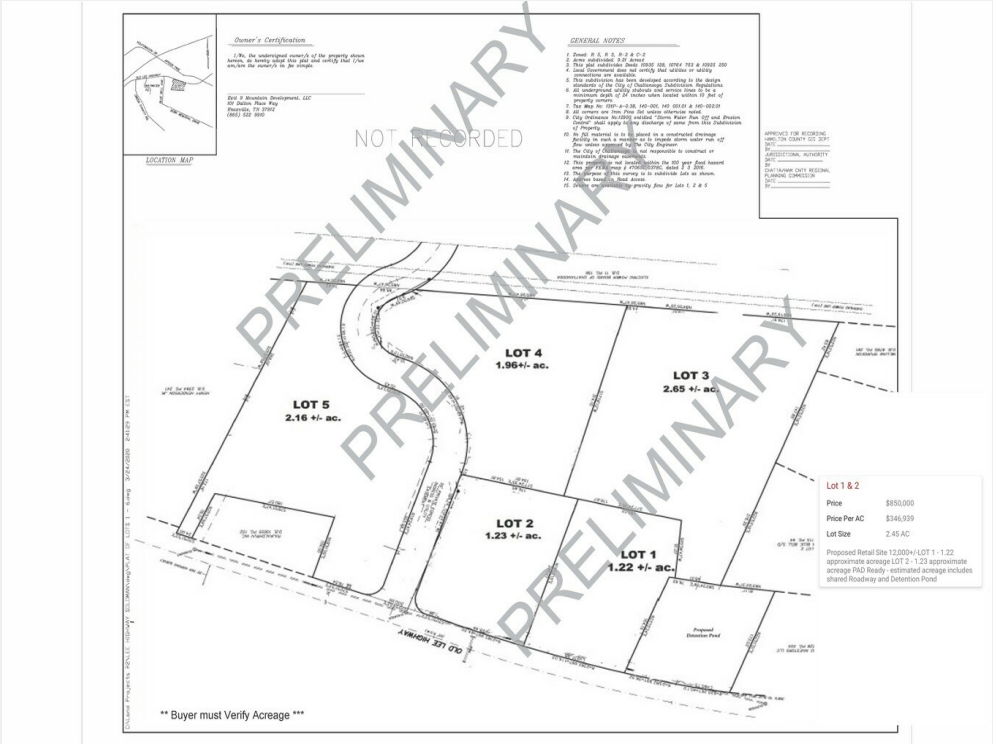


LOT 1 & 2

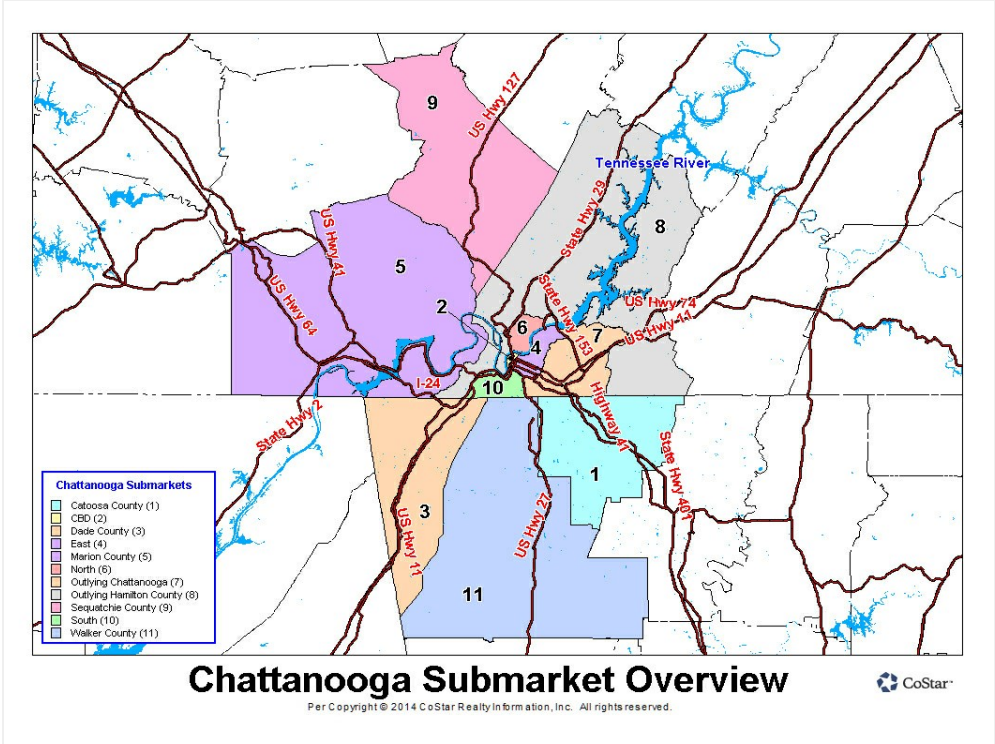
L 1 & L2 - Old Lee Highway Development

8002 Old Lee Highway - LOT 1 & LOT 2, Ooltewah, TN 37363

Property Photos



8002 Old Lee Hwy - LOTS 1 & 2 _ approx Acreage & List Price

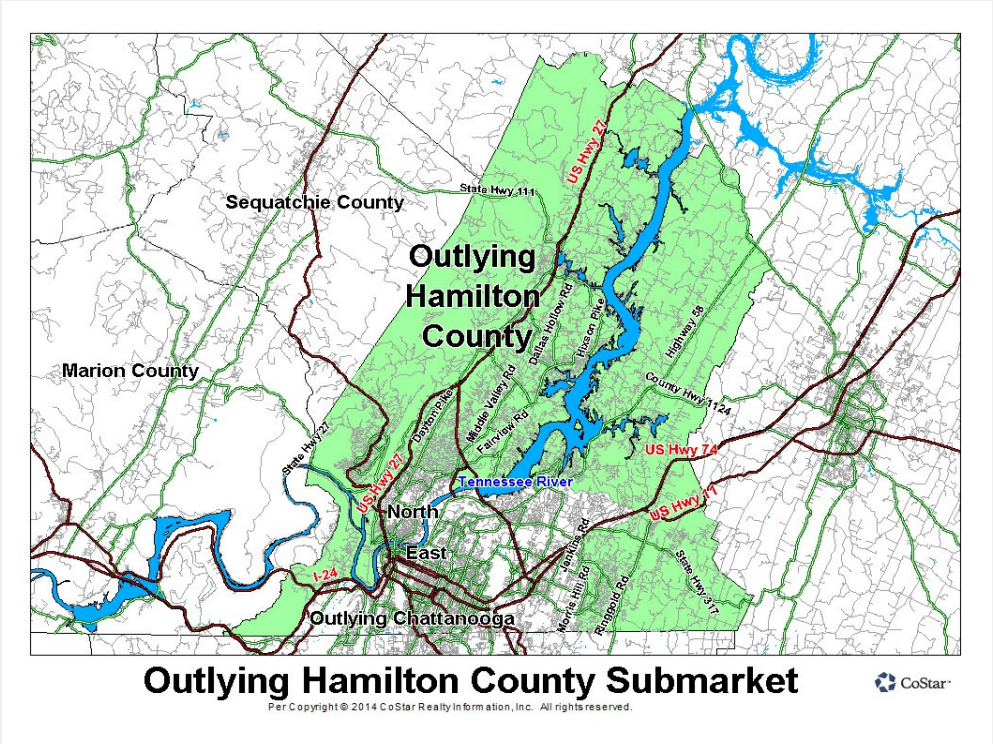


Greater MSA

L 1 & L2 - Old Lee Highway Development

8002 Old Lee Highway - LOT 1 & LOT 2, Ooltewah, TN 37363

Property Photos



image

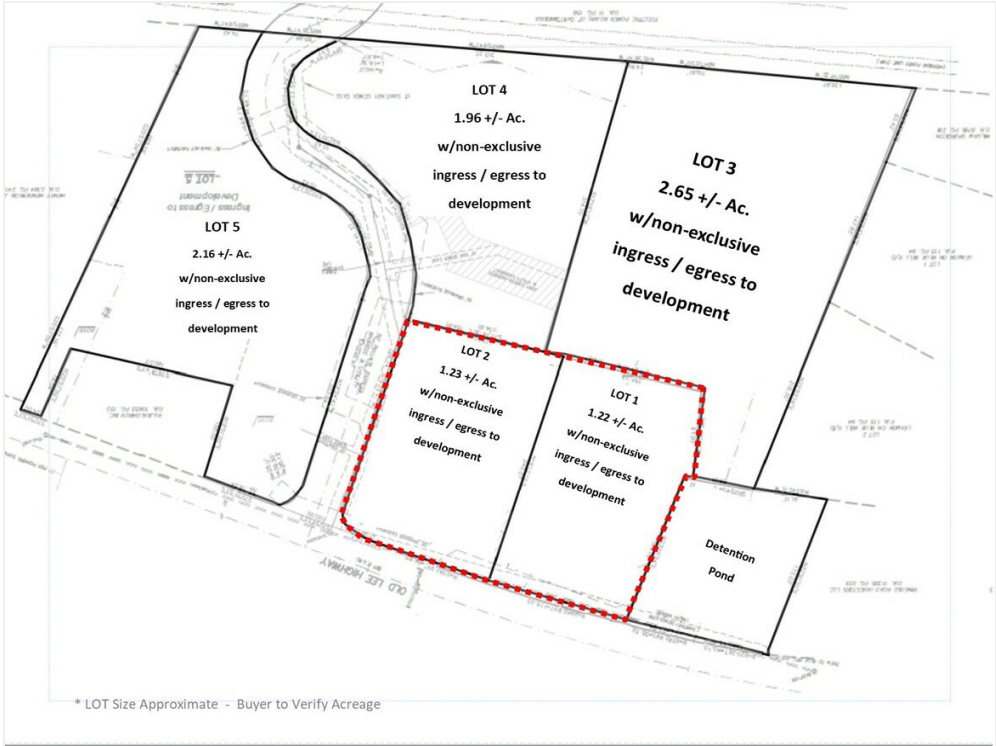


LOT 1 & 2 - Old Lee Hwy Development

L 1 & L2 - Old Lee Highway Development

8002 Old Lee Highway - LOT 1 & LOT 2, Ooltewah, TN 37363

Property Photos



LOT 1 & LOT 2 - Old Lee Hwy Development - Approximate LOT Size

L 1 & L2 - Old Lee Highway Development

8002 Old Lee Highway - LOT 1 & LOT 2, Ooltewah, TN 37363



Travis Hulsey

THulsey@CRE-PROS.com

(423) 362-8333

Real Estate Partners

2115 Stein Dr

Chattanooga, TN 37421

