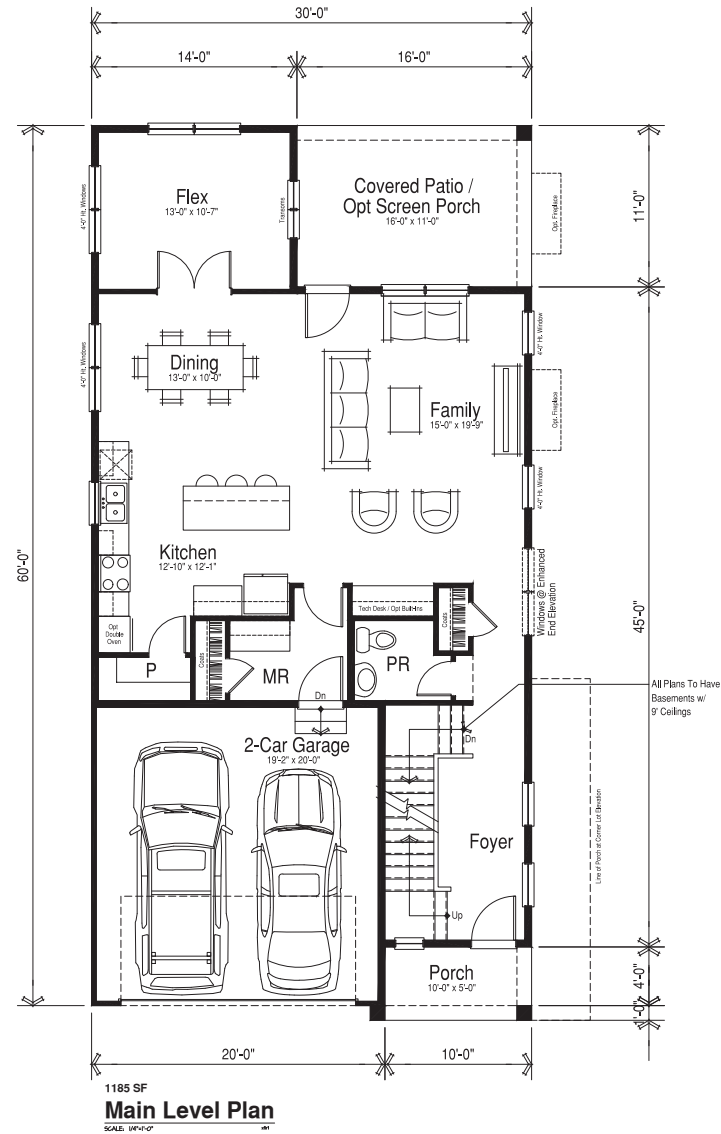
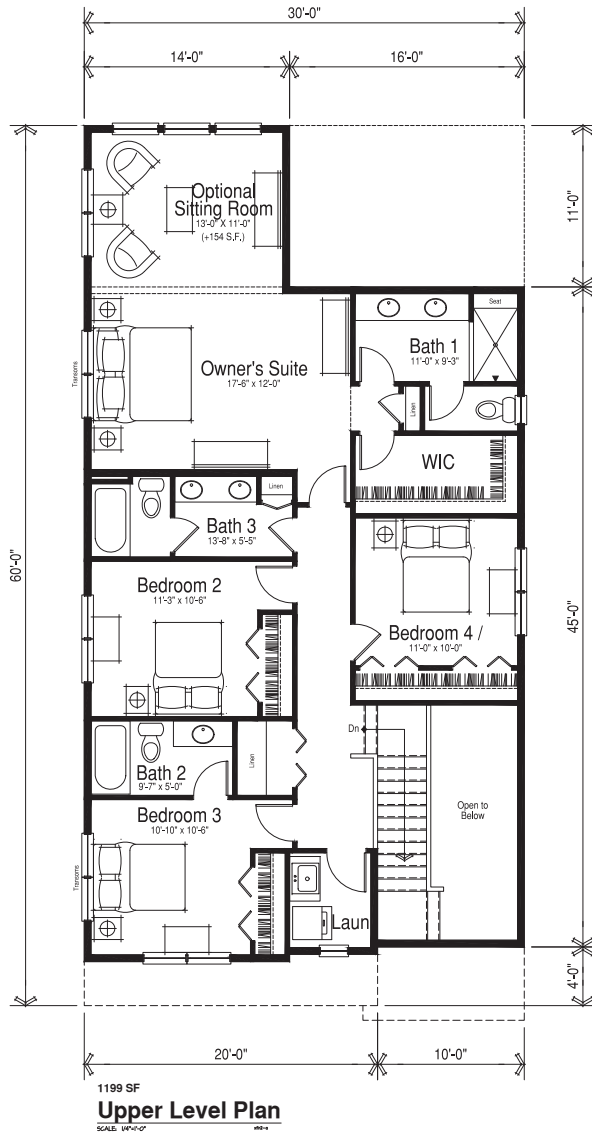


General Notes:

- 1.) Ceiling Heights Shall Be 9'-0" Tall (Approx) on Main and Upper Floors
- 2.) 9'-0" Tall (Approx) Full / Unfinished Basements Are Included With All Homes
- 3.) Provide Basement Windows Per Code
- 4.) Area Ways Where Required for Basement Windows May Project Into Side-Yards
- 5.) Fireplaces May Encroach 18" Into Side and Rear-Yards



Dubin Consulting, Inc.

**Floor Plans: Plan 3 - 2384 SF (2538 SF w/ Opt Sitting Room)
 Larger 4 Bedroom Model**

Single Family Prototype
 SF160555

bsbdesign.com
 The drawings presented are illustrative of character and design intent only, and are subject to change based upon final design considerations (i.e., applicable codes, structural, and MEP design requirements, unit plan / floor plan changes, etc.)

