

OFFICE SPACE FOR LEASE

1025 W. 190th Street
Gardena, California



Office Space for Lease

1025 W. 190TH ST. GARDENA, CA 90248

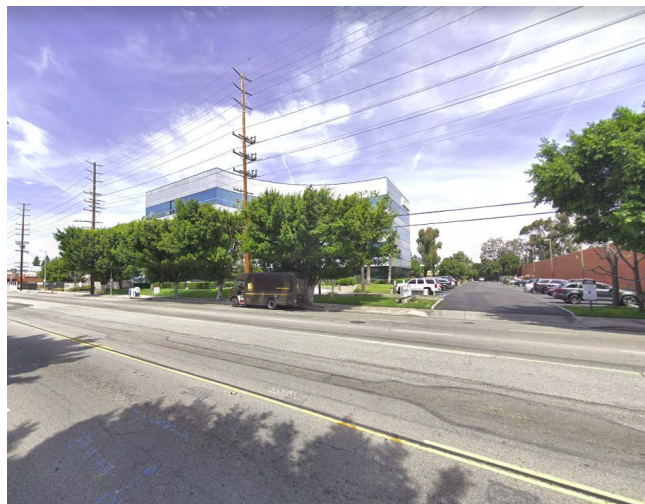
AVAILABLE SPACE

Suite 165: Size: ±2,819 RSF
Rent: \$2.93 PSF/ Mo.
NNN

HIGHLIGHTS

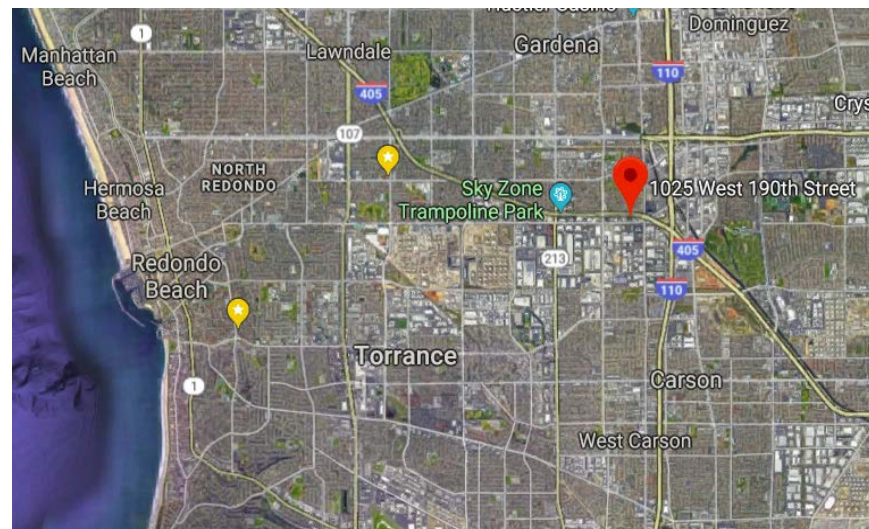
- Class A Office Building
- Access to restaurants & coffee shops within a short distance
- Conveniently located between the Los Angeles Airport and Long Beach Airport
- Free, Surface Parking
- Access to 405 & 110 Freeways
- Available immediately*

**Prospective tenants are hereby advised that all uses are subject to City approval*



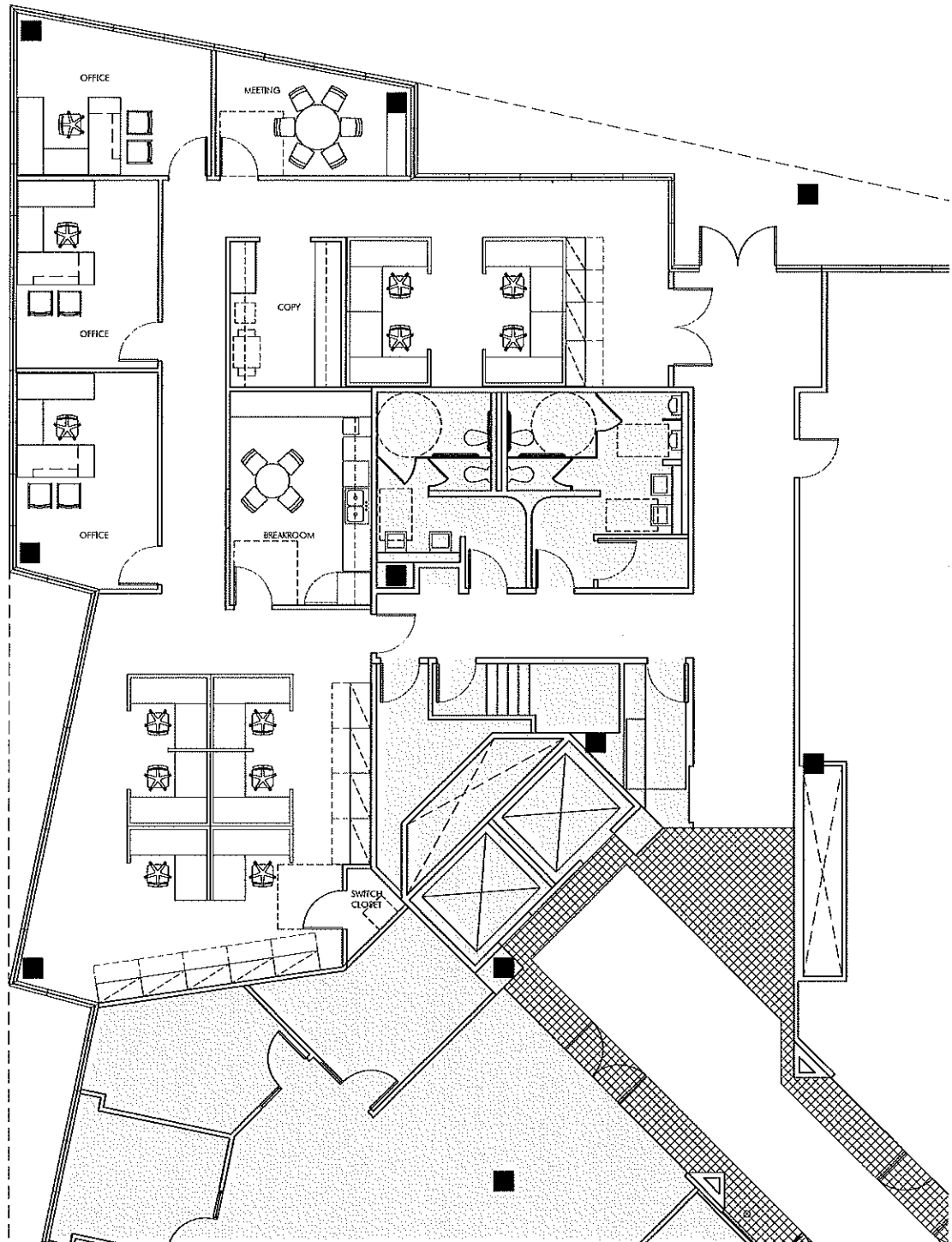
LOCATION:

Gardena



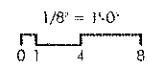
Kennedy Wilson | 151 S. El Camino Drive, Beverly Hills, CA 90212 | 310-887-6400

Kennedy Wilson Properties, Ltd. (Responsible Broker, CalBRE #00659610) makes no warranty or representation as to the accuracy of the information contained herein. Terms of sale or lease and availability of the property are subject to change or withdrawal without notice.



USABLE AREA 2,300 SF

OFFICES 03
 WORKSTATIONS 10
 CONFERENCE (SM) 01



FLOOR PLAN
 CUB GARDENIA PHASE3 - SUITE 165

1/8" = 1'-0"
 11 MAY 2017

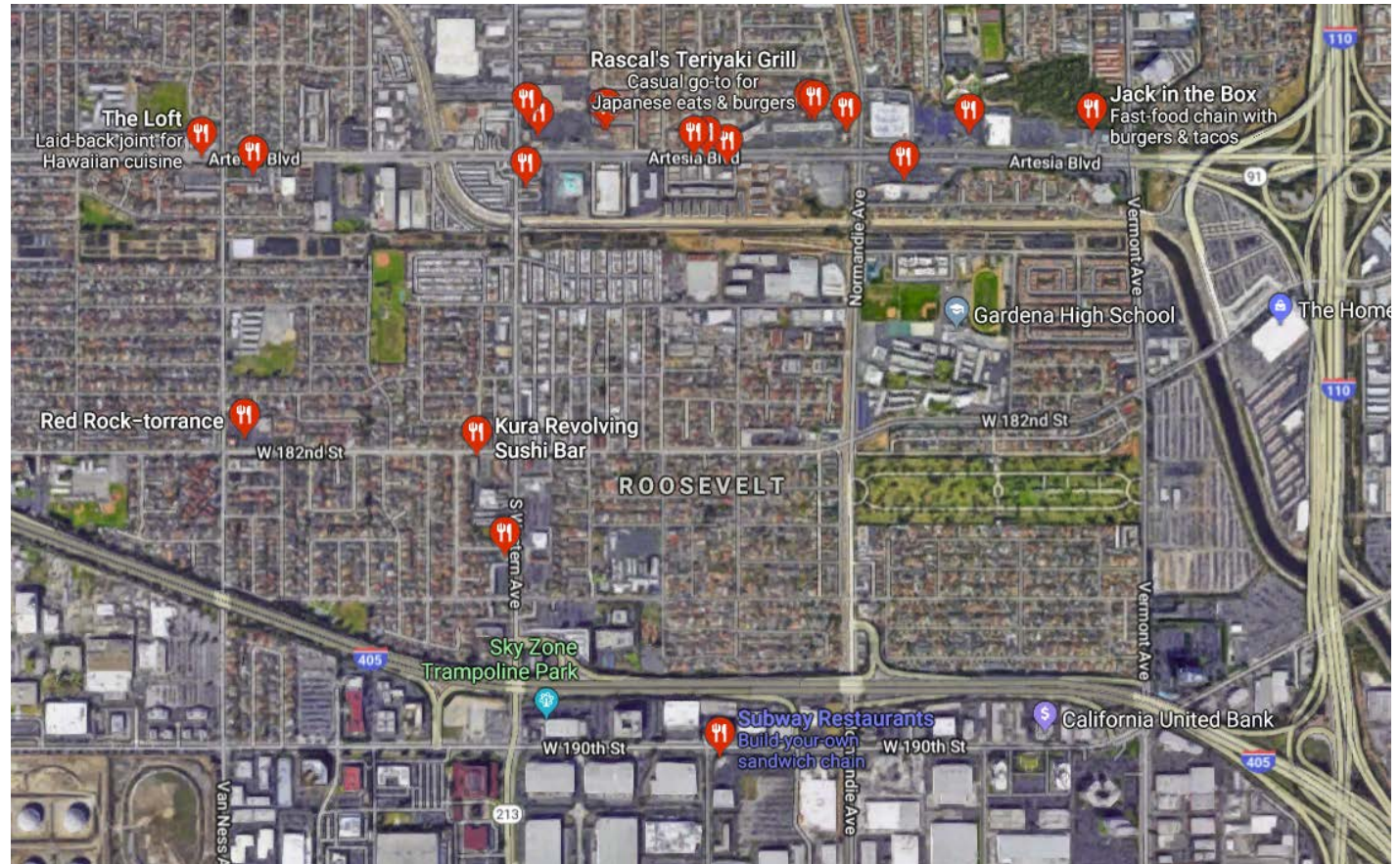
SHIMODA DESIGN GROUP
 ARCHITECTURE

Office Space for Lease

1025 W. 190TH ST. GARDENA, CA 90248

Food & Drink 🍴

1. Paradise L.A. Restaurant & Bar
2. The Green Olive
3. Paddock Lounge
4. The Loft
5. Yo Way Sandwich Shop
6. Rascal's Teriyaki Grill
7. Gatten Sushi
8. Kura Revolving Sushi Bar



Contact:

Joseph Goudlock

Cell: 310-658-9179

Office: 310-887-6400

Email: jgoudlock@kennedywilson.com

Kennedy Wilson | 151 S. El Camino Drive, Beverly Hills, CA 90212 | 310-887-6400

Kennedy Wilson Properties, Ltd. (Responsible Broker, CalBRE #00659610) makes no warranty or representation as to the accuracy of the information contained herein. Terms of sale or lease and availability of the property are subject to change or withdrawal without notice.