

the Courts

NEC MCCALL & ANTELOPE
MENIFEE, CA



CBRE

FOR LEASE

**New Mixed Use Development
Retail, Restaurant, Medical, Residential**

HIGHLIGHTS



the Courts



The Courts features retail, medical, office, and restaurant components anchored by 240 residential units.



Across from Menifee Global Medical Center with 400 hospital beds employing over 350 medical professionals



10,682 residential units are in development pipeline within City limits



Signalized intersection at Antelope and McCall on going- to- work side of McCall



Situated along the rapidly growing east-west McCall corridor within 1 mile of the I-215 Freeway



7.5% population growth expected in the next 2 years

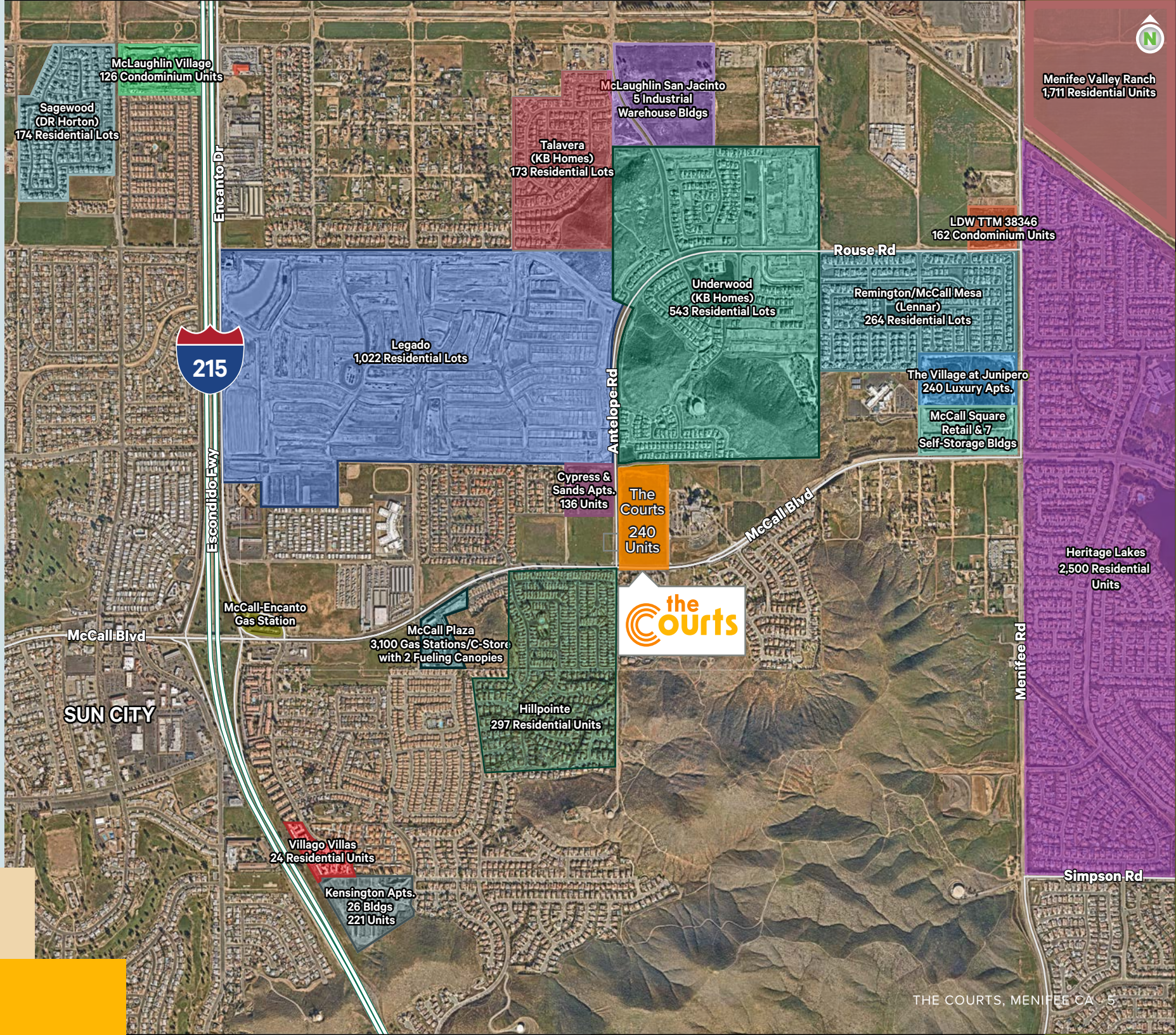
Antelope Rd

McCall Blvd

Aspel Rd



RESIDENTIAL DEVELOPMENTS IN MENIFEE



DEMOGRAPHICS

Demographics

	1 Mile	3 Miles	5 Miles
2022 Population - Current Year Estimate	7,661	66,831	130,377
2022 Average Household Income	\$109,256	\$97,588	\$107,216
2022 Daytime Population	5,921	58,055	103,818
2022 Households - Current Year Estimate	2,574	24,668	42,489





Brandon Beauchemin
 First Vice President
 +1 909 418 2100
 Lic. 01338753
 brandon.beauchemin@cbre.com

Kelly Murphy
 Vice President
 +1 909 418 2049
 Lic. 00894640
 kelly.murphy@cbre.com



© 2023 CBRE, Inc. All rights reserved. This information has been obtained from reliable sources but has not been verified for accuracy or completeness. CBRE, Inc. makes no guarantee, representation, or warranty and accepts no responsibility or liability for the accuracy, completeness, or reliability of the information contained herein. You should conduct a careful, independent investigation of the property and verify all information. Any reliance on this information is solely at your own risk. CBRE and the CBRE logo are service marks of CBRE, Inc. All other marks displayed on this document are the property of their respective owners, and the use of such marks does not imply any affiliation with or endorsement of CBRE. Photos herein are the property of their respective owners. Use of these images without the express written consent of the owner is prohibited.

