

Last Space  
Available

# TOWNE SQUARE

11029 West Colonial Drive, Ocoee, FL 34761



## PROPERTY HIGHLIGHTS

- GLA:** 126,374 SF
- Municipality:** Orange County
- Inline Space Available:** 1,600 SF
- Co-Tenants:** Old Time Pottery, Little Gym, Kumon Learning Center, McDonald's, Arby's, Cato & Jackson Hewitt
- Traffic Counts:** W. Colonial Drive (Hwy 50) – 45,000 ADT  
Maguire Road – 21,000 ADT

DEMOGRAPHICS	1 Mile	3 Mile	5 Mile
Total Population	4,253	64,977	170,994
Households	1,545	22,469	60,280
Average HH Income	\$83,076	\$80,617	\$78,247
Total Employees	5,208	48,077	96,857



**Janet Galvin**  
O 407 278 5535 x 404  
C 407 484 9562  
janet@archonca.com

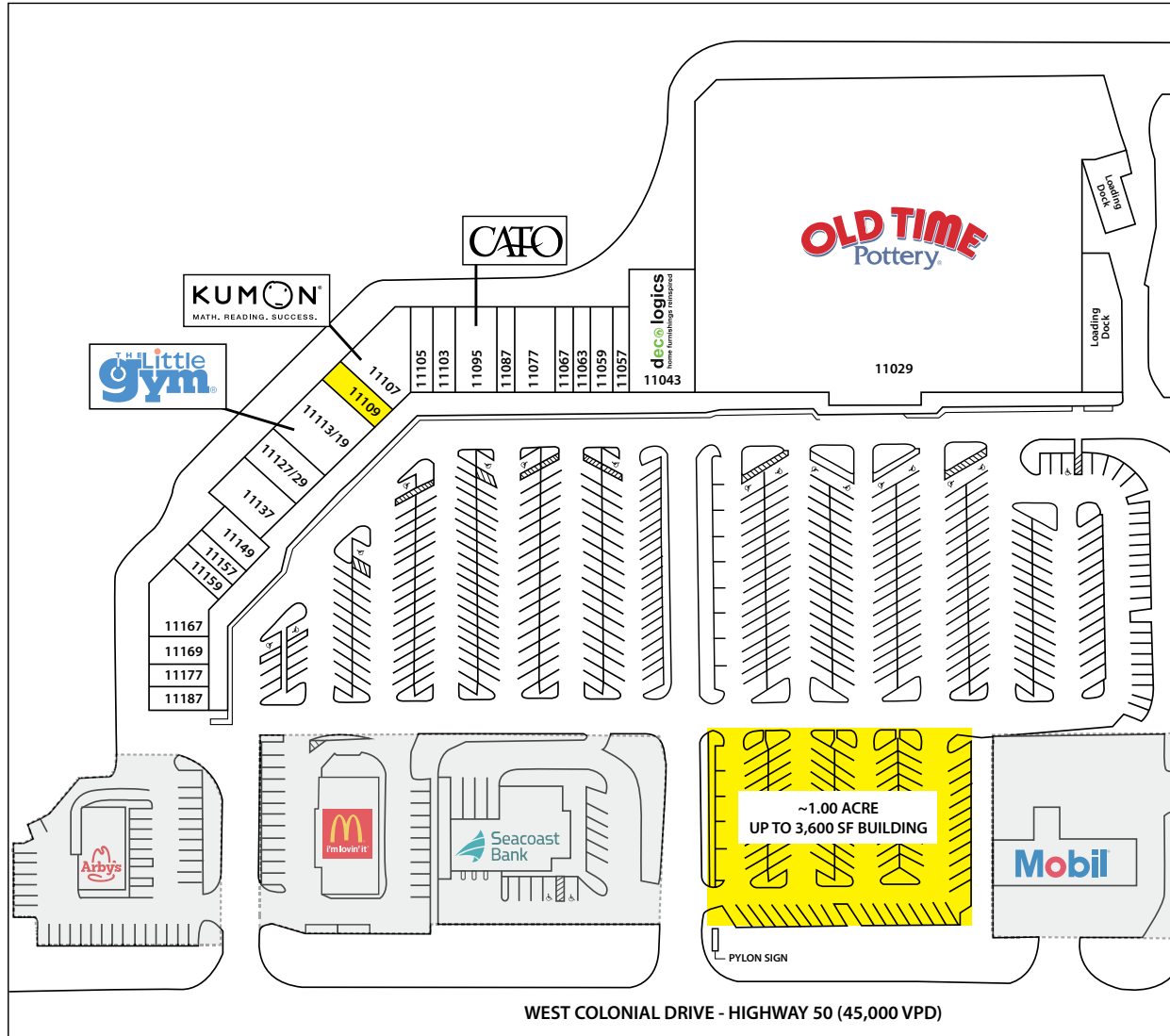
100 East Central Blvd, Suite #2  
Orlando, FL 32801  
P 407 278 5535 | F 407 545 2844  
[www.archonca.com](http://www.archonca.com)

Stay in the know. Click to  
follow us on social media.



## 2ND GEN. RESTAURANT AVAILABLE

Towne Square, 11029 West Colonial Drive, Ocoee, FL 34761



### TOWNE SQUARE

Ocoee, FL

Suite	Tenant	Area (SF)
11029	Old Time Pottery	
11043	Decologics Furniture	
11057	Hollywood Grooming	
11059	ACE Cash Express	
11063	Jackson Hewitt Tax Service	
11067	Natural Nails	
11077	Mi Querida Columbian Restaurant	
11087	Vacuums, Etc.	
11095	Cato Fashions	
11103	Cilantro's Taqueria	
11105	Hai San Chinese Restaurant	
11107	Kumon	
11109	<b>AVAILABLE</b>	1,600
11113/19	The Little Gym	
11127/29	Bangkok Thai	
11137	Laundromat	
11149	Cleaners	
11157	Dr. Pranati Chokshi (Dentist)	
11159	Integrity Laminate Flooring	
11167	Chews A Puppy	
11169	Hohman Rehab & Therapy	
11177	D & C Barber Shop	
11187	Opti-Works	
<b>TOTAL:</b>		<b>126,374</b>



AVAILABLE



Separately owned outparcel

Landlord does not warrant that any occupant indicated herein will be a tenant in the space marked or in this shopping center. Nothing contained herein shall be deemed to limit, waive, or lessen the rights of Landlord under the lease. This exhibit shows only Tenant's location in the Landlord's property and is not a scale drawing showing size, etc.



CONTINENTAL REALTY CORPORATION  
Relationships. Integrity. Tradition.



**ARCHON**  
COMMERCIAL ADVISORS

Janet Galvin  
O 407 278 5535 x 404  
C 407 484 9562  
janet@archonca.com

100 East Central Blvd, Suite #2  
Orlando, FL 32801  
P 407 278 5535 | F 407 545 2844  
[www.archonca.com](http://www.archonca.com)

Stay in the know. Click to follow us on social media.



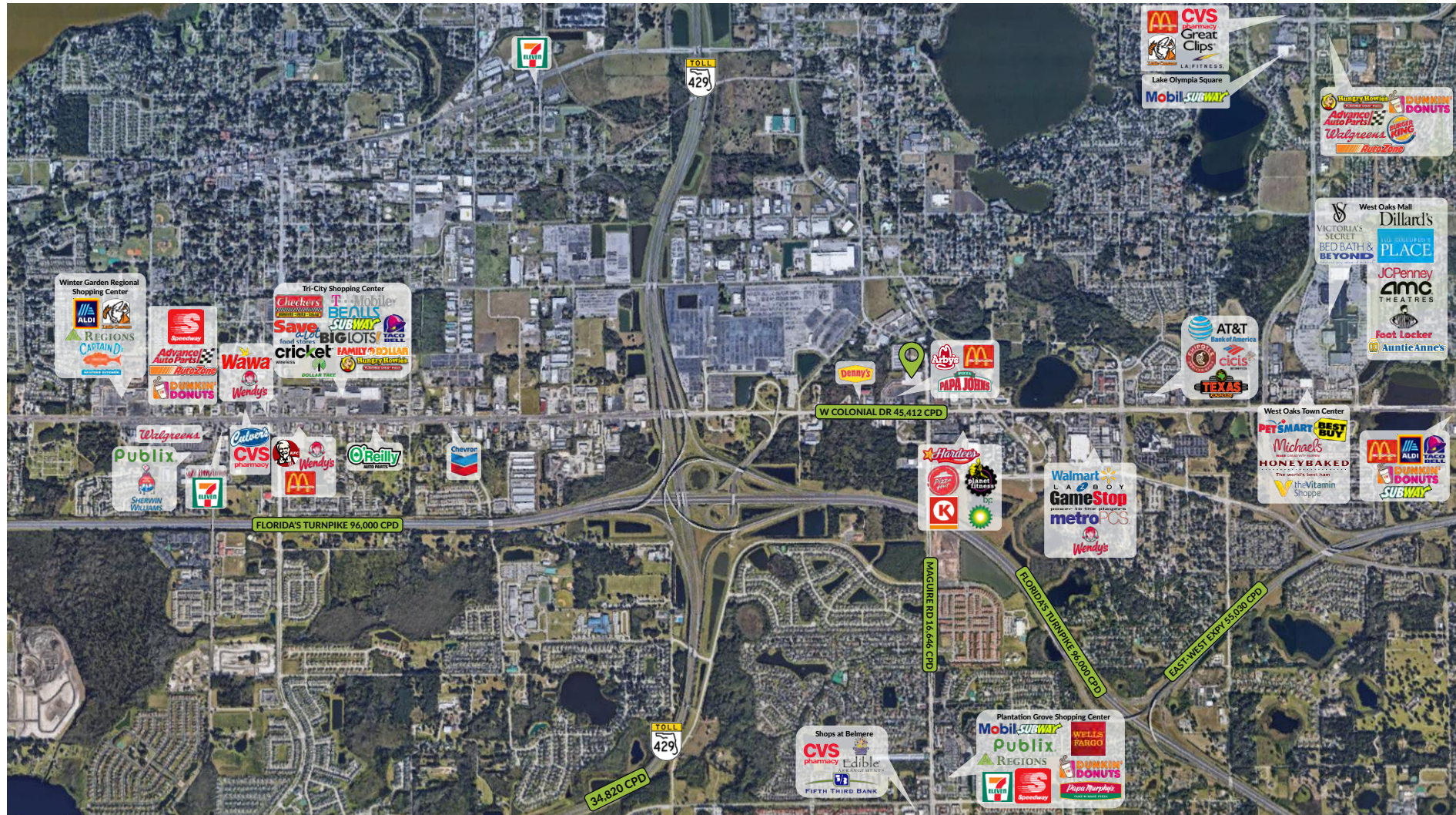
CONTINENTAL REALTY CORPORATION  
Relationships. Integrity. Tradition.



## Surrounding Retail

# TOWNE SQUARE

11029 West Colonial Drive, Ocoee, FL 34761



**ARCHON**  
COMMERCIAL ADVISORS

Janet Galvin  
O 407 278 5535 x 404  
C 407 484 9562  
janet@archonca.com

100 East Central Blvd, Suite #2  
Orlando, FL 32801  
P 407 278 5535 | F 407 545 2844  
[www.archonca.com](http://www.archonca.com)

Stay in the know. Click to  
follow us on social media.

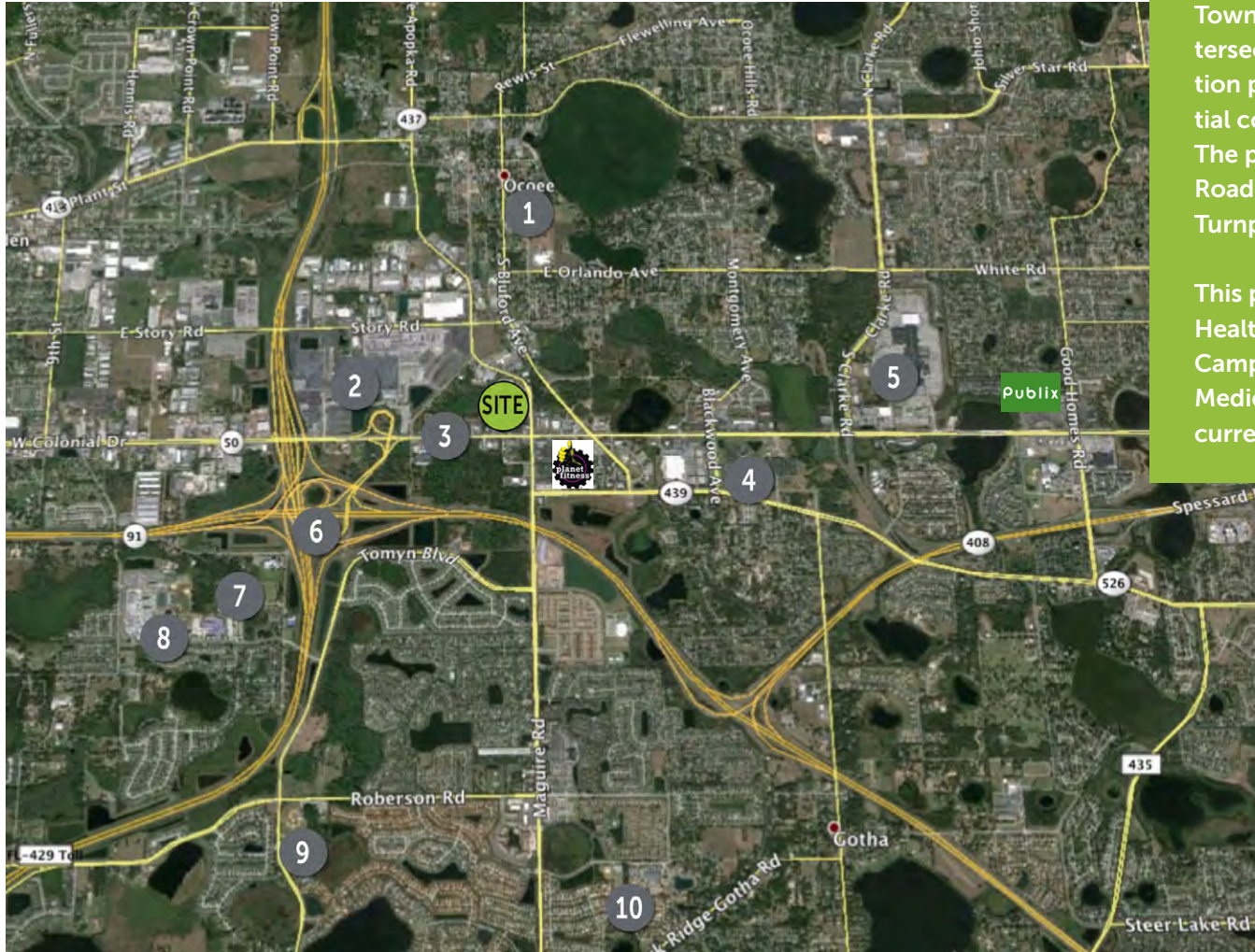


**CONTINENTAL REALTY  
CORPORATION**  
Relationships. Integrity. Tradition.



# TOWNE SQUARE

11029 West Colonial Drive, Ocoee, FL 34761



Towne Square is strategically located at the signalized intersection of West Colonial Drive & Maguire Rd. This location positions Towne Square between the strong residential communities of Ocoee, Winter Garden & Windermere. The property is also easily accessible from Florida 429 Toll Road which connects with the 408 Toll Road, The Florida Turnpike and Interstate 4.

This property is located less than a mile away from the Health Central Hospital. This 100 acre Medical & Research Campus is expanding to include multiple new Hospital, Medical Office and Research buildings with over 1,500 current employees.

1. Ocoee Middle School
2. Manheim Auto Action
3. Hwy 50 Expansion – \$37m project – expanding from 4 to 6 lanes
4. Health Central Hospital & Medical City – 1,500 employees and growing
5. West Oaks Mall – Dillard's, Bed Bath & Beyond
6. Florida Turnpike & 429 Toll Road Interchange
7. Roper YMCA Family Center
8. West Orange High School
9. Lake Whitney Elementary
10. Thornbrooke Elementary

This disclaimer has been prepared by Archon Commercial Advisors, LLC for marketing to the general public. Archon makes no representations or warranties of any kind, expressed or implied, regarding the information including, but not limited to, warranties of content, accuracy and reliability. Any interested party should make their own investigations into the accuracy of the information.

Archon Commercial Advisors is an affiliate of 