

PLAZA POINTE / FOR LEASE

4955 W. 135TH STREET • LEAWOOD, KS



PROPERTY INFORMATION

- Visible from 135th Street
- Strong Retail & Residential Market
- Excellent Parking • Covered Entry

- **2,150 SF**
- **\$24.50 / SF NNN**

DEMOGRAPHICS

1 MILE
Total Households: 4,815
Total Population: 9,121
Total HH Income: \$180,343
Est. # of Employees: 3,180

3 MILES
Total Households: 47,252
Total Population: 73,690
Total HH Income: \$154,106
Est. # of Employees: 74,477

5 MILES
Total Households: 102,865
Total Population: 163,176
Total HH Income: \$142,123
Est. # of Employees: 131,091

**GASPERI
GROUP**
COMMERCIAL REAL ESTATE LLC



GasperiGroup.com

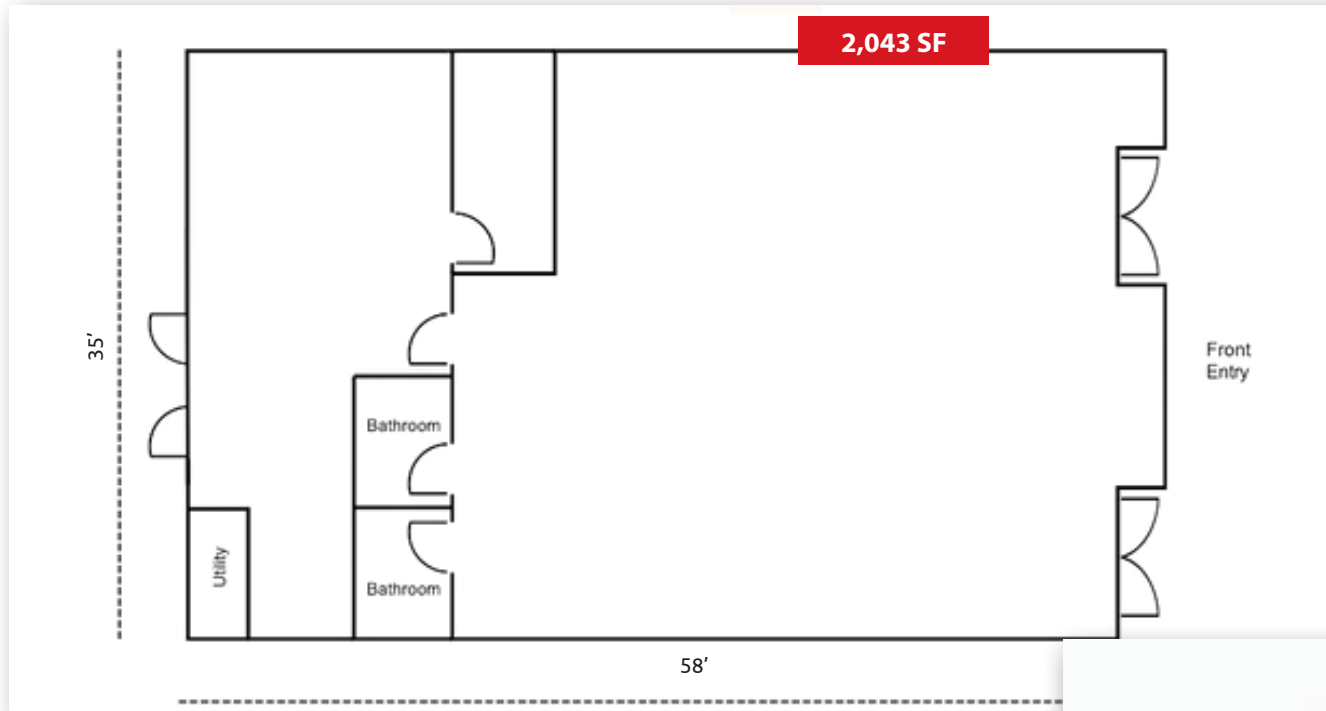
STEVE GASPERI
steve@gasperigroup.com
M | 816-591-9764

PLAZA POINTE / FOR LEASE

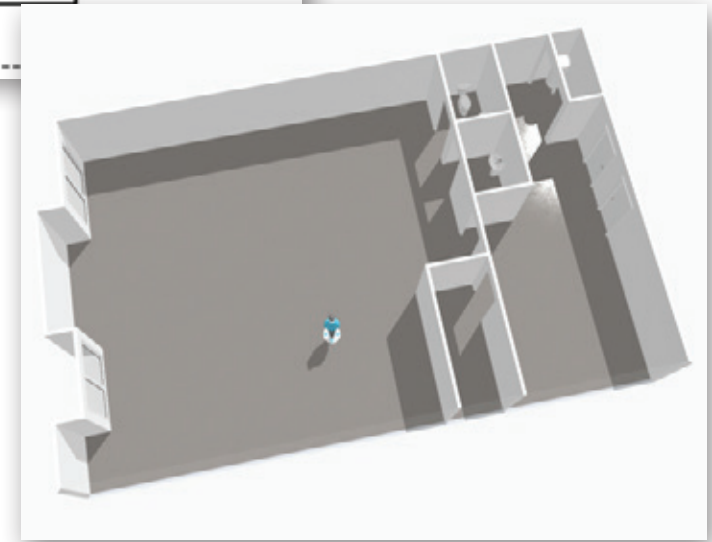
4955 W. 135TH STREET • LEAWOOD, KS



SPACE FEATURES



- Open Floor Plan
- Double Doors
- Brick Exterior

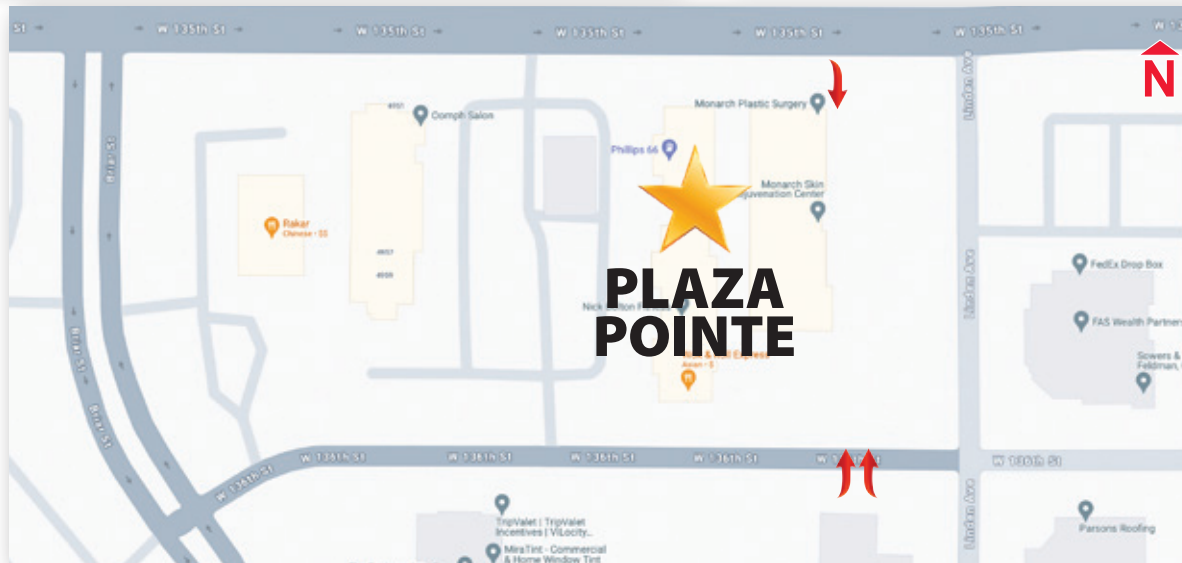


PLAZA POINTE / FOR LEASE

4955 W. 135TH STREET • LEAWOOD, KS



AVAILABLE



PLAZA POINTE / FOR LEASE

4955 W. 135TH STREET • LEAWOOD, KS



CURRENT TENANTS



**GASPERI
GROUP**
COMMERCIAL REAL ESTATE LLC



Gasperigroup.com

STEVE GASPERI
steve@gasperigroup.com
M | 816-591-9764

PLAZA POINTE / FOR LEASE

4955 W. 135TH STREET • LEAWOOD, KS



PLAZA POINTE / FOR LEASE

4955 W. 135TH STREET • LEAWOOD, KS



**GASPERI
GROUP**
COMMERCIAL REAL ESTATE LLC



GasperiGroup.com

STEVE GASPERI
steve@gasperigroup.com
M | 816-591-9764

PLAZA POINTE / FOR LEASE

4955 W. 135TH STREET • LEAWOOD, KS

