

For Lease

# Hill St. & Ridge St.



LOGIC



275 Hill St.  
Reno, NV 89501

**Chase Houston, SIOR**  
Senior Vice President  
775.848.6007  
chouston@logicCRE.com  
S.0174274



## Listing Snapshot



**\$2.50 PSF FS**  
Lease Rate



**± 732 - 1,671 SF**  
Available Square Footage



**± 17,916 SF**  
Building Size

## Property Highlights

- 2nd floor Class A office space
- Full-service lease
- Shared conference room, kitchen access, and private parking garage
- Located in the heart of downtown
- Walking distance to courthouse, banks, restaurants, and shopping
- Elevator served

## Demographics

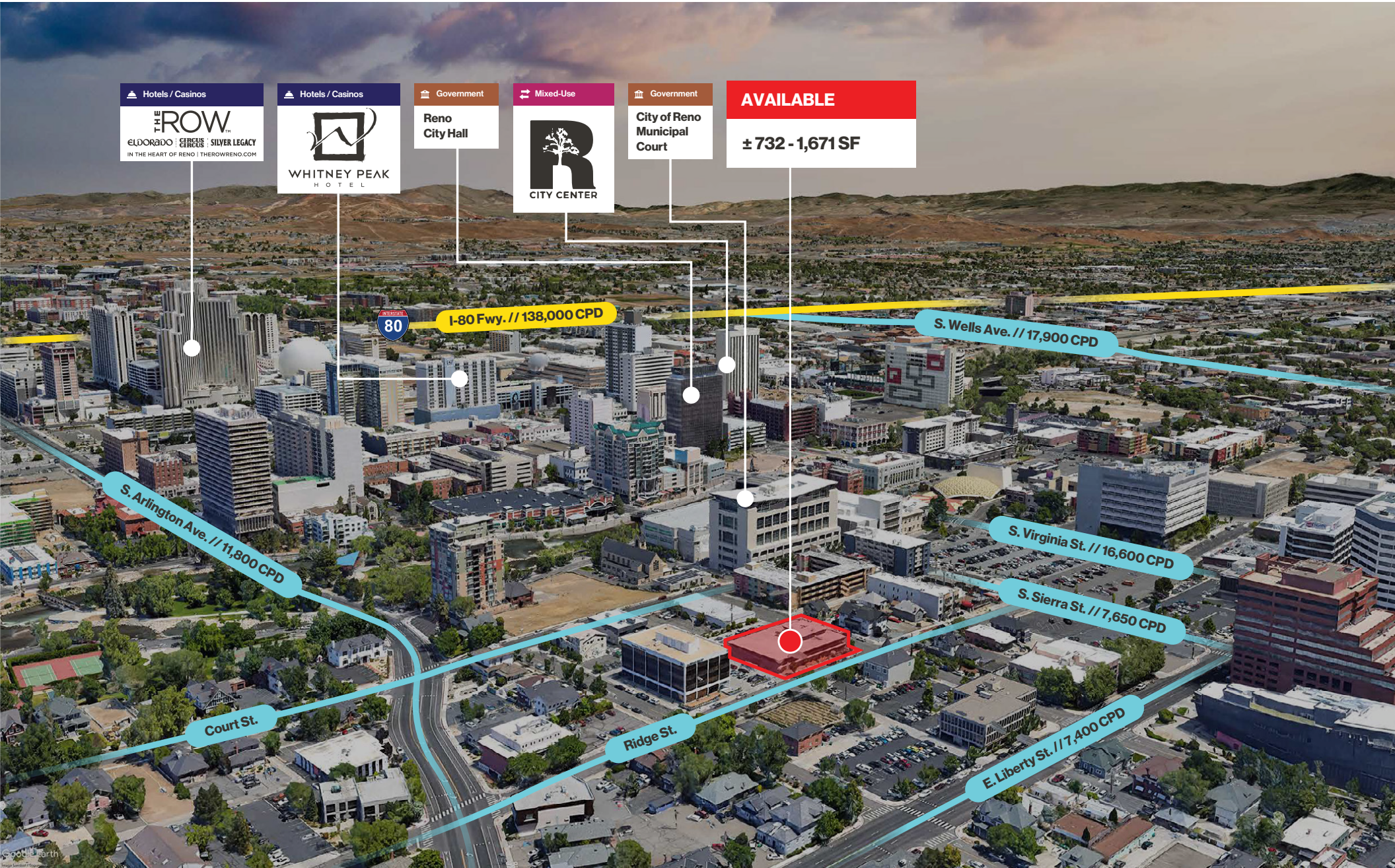
	1-mile	3-mile	5-mile
2024 Population	21,267	137,868	244,107
2024 Average Household Income	\$82,641	\$86,758	\$96,383
2024 Total Households	12,234	59,802	102,150












 Hotels / Casinos


**THE ROW™**  
ELDORADO | CIRCUS | SILVER LEGACY  
IN THE HEART OF RENO | THEROWRENO.COM

 Hotels / Casinos

**WHITNEY PEAK  
HOTEL**

 Government

**Reno  
City Hall**

 Mixed-Use

**R  
CITY CENTER**

 Government

**City of Reno  
Municipal  
Court**

**AVAILABLE**

**± 732 - 1,671 SF**

 **I-80 Fwy. // 138,000 CPD**

**S. Wells Ave. // 17,900 CPD**

**S. Arlington Ave. // 11,800 CPD**

**S. Virginia St. // 16,600 CPD**

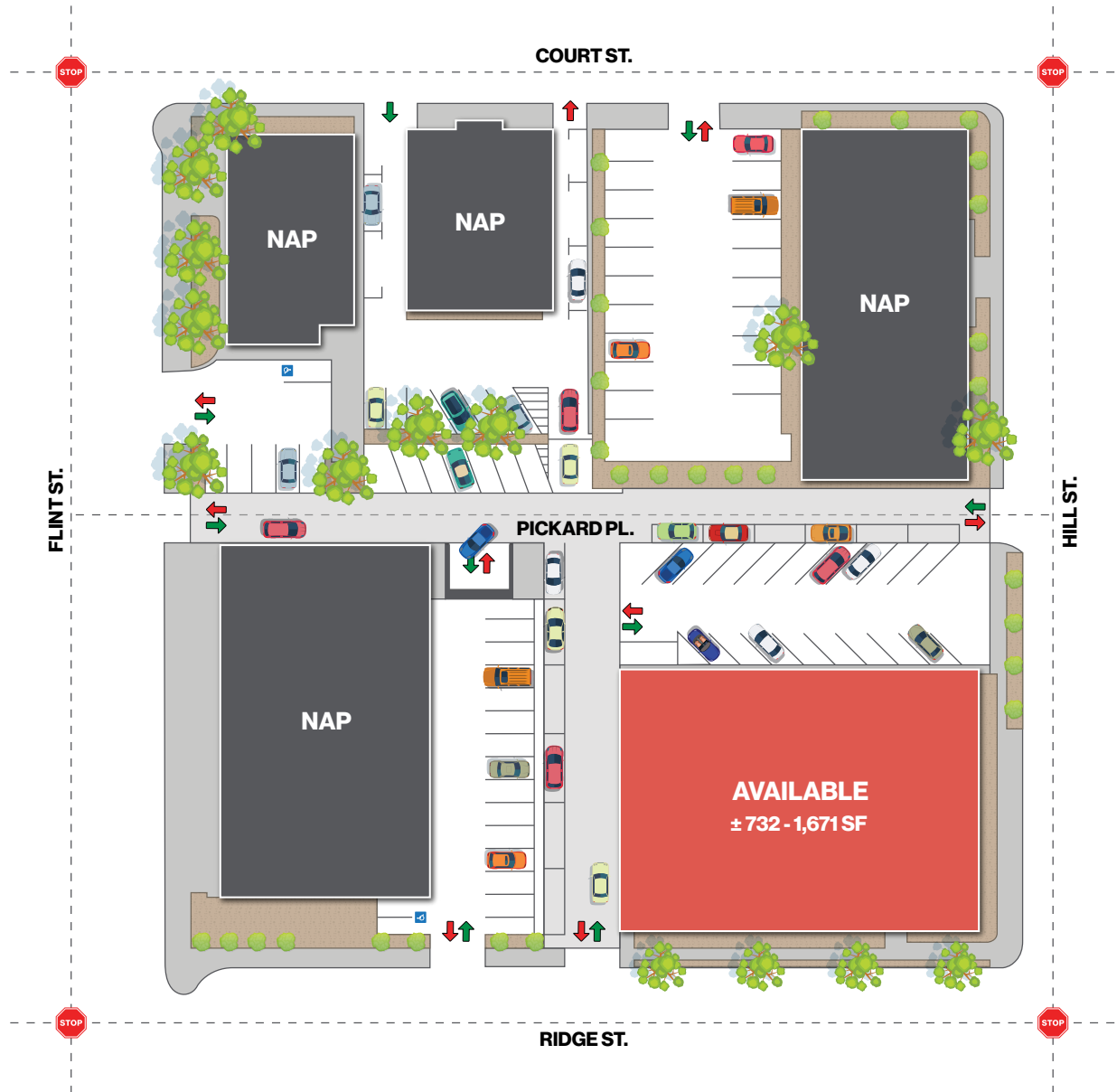
**S. Sierra St. // 7,650 CPD**

**Court St.**

**Ridge St.**

**E. Liberty St. // 7,400 CPD**







# 2nd Floor | Floor Plan

Available  NAP

## Suite 205

- ± 745 SF
- Reception + storage + 2x private offices
- Can be combined with suite 210 for ± 1,490 SF

## Suite 210

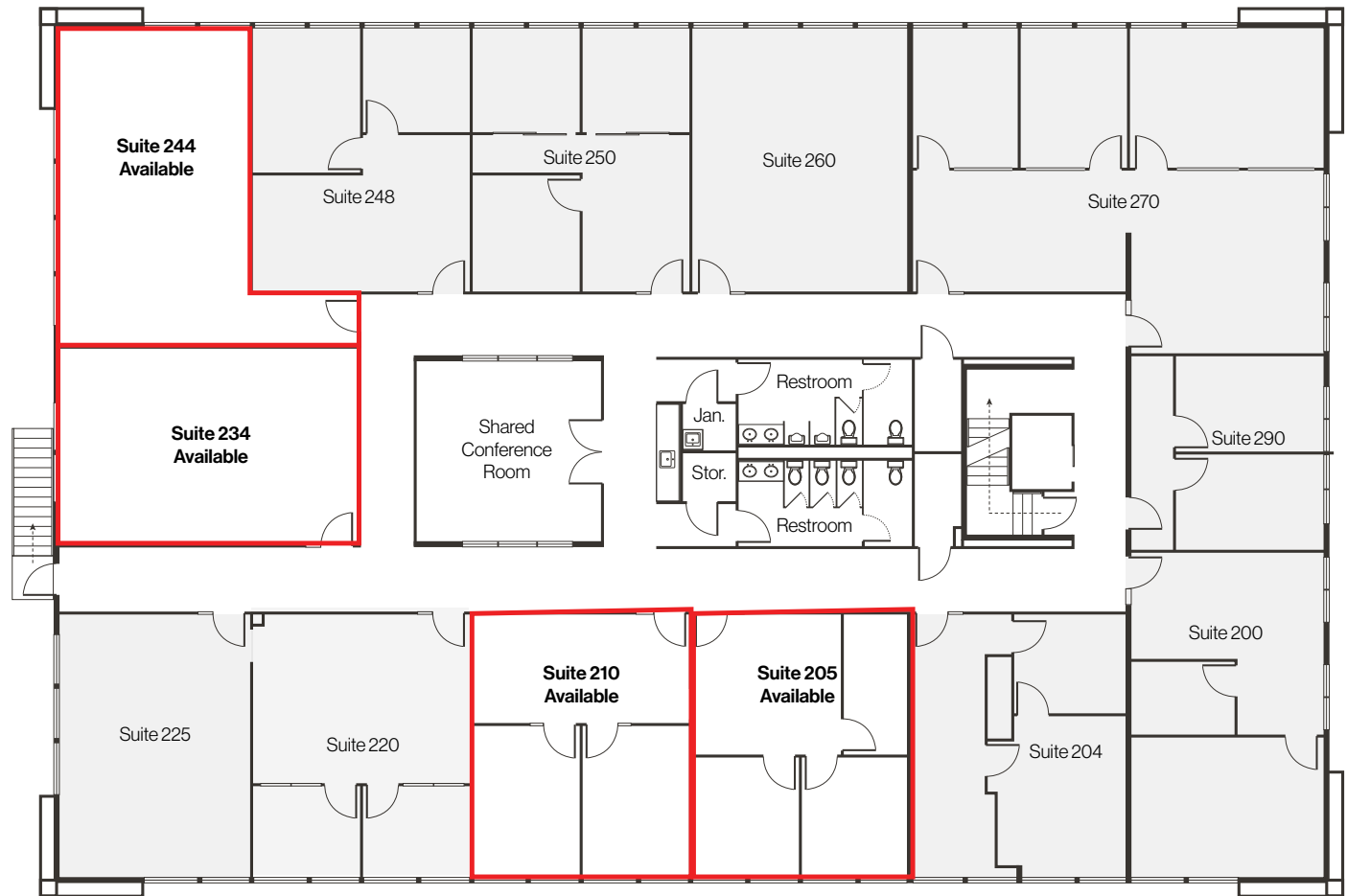
- ± 745 SF
- Reception + bullpen + 2x private offices
- Can be combined with suite 205 for ± 1,490 SF

## Suite 234

- ± 732 SF
- Open office
- Can be combined with suite 244 for ± 1,671 SF
- Available 5/1/25

## Suite 244

- ± 939 SF
- Open office
- Can be combined with suite 234 for ± 1,671 SF
- Available 5/1/25





Property Photos





# LOGIC Commercial Real Estate

## Specializing in Brokerage and Receivership Services



LOGIC



Join our email list and  
connect with us on LinkedIn

The information herein was obtained from sources deemed reliable; however LOGIC Commercial Real Estate makes no guarantees, warranties or representation as to the completeness or accuracy thereof.

For inquiries please reach out to our team.

**Chase Houston, SIOR**  
Senior Vice President  
775.848.6007  
chouston@logicCRE.com  
S.0174274