

Available Medical Office Space for Lease

# Medical Center Physician's Building

505 NE 87th Ave, Vancouver, WA 98664



For Leasing Information:

Lael Crompton

Sr. Director, Leasing

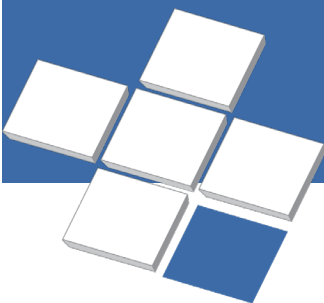
Phone: 858-794-1900

lcrompton@pmbres.com

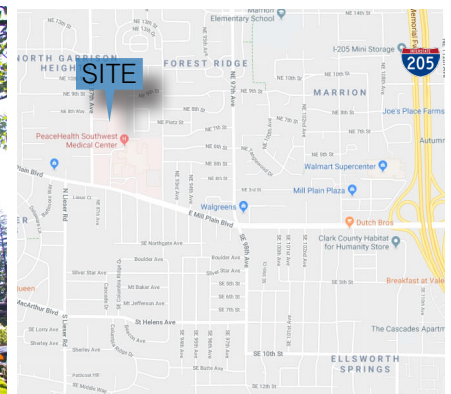
www.pmbres.com

CA Lic. 01871298

- Consists of two connected buildings
- Building A is five-stories and 71,000 square feet
- Building B is four-stories and 50,500 square feet
- Located on PeaceHealth Southwest Medical Center campus
- 385-space parking garage next to property
- On-campus management with dedicated maintenance staff

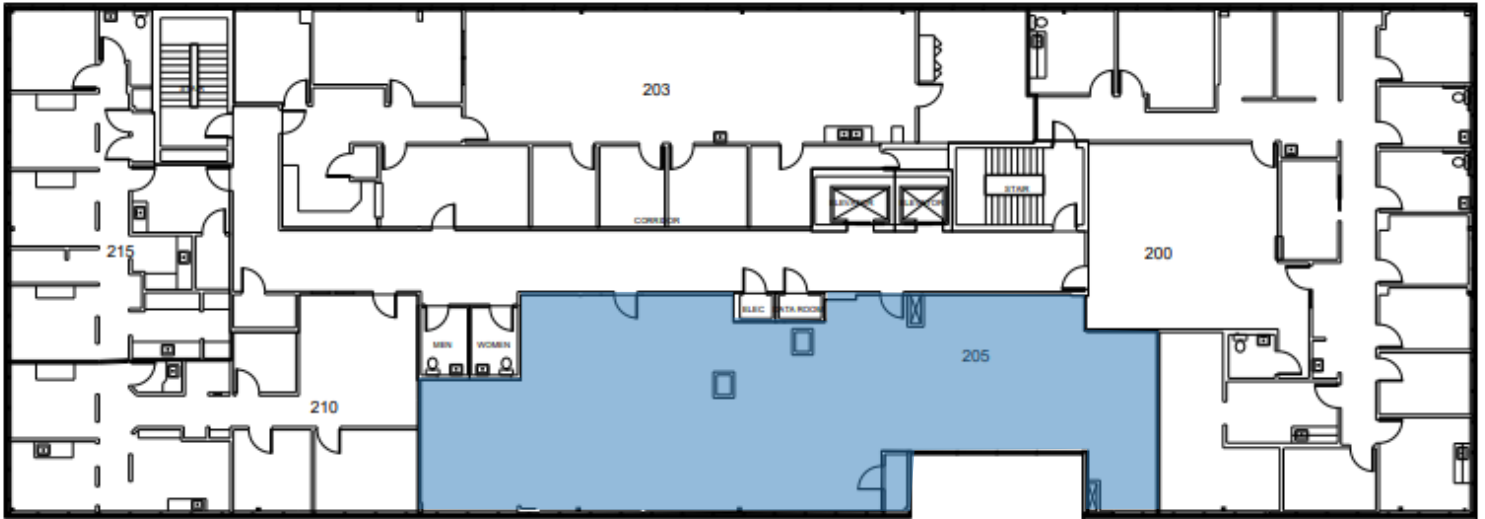


**PMB**  
Real Estate Services  
*Real Estate Management Solutions for Healthcare*

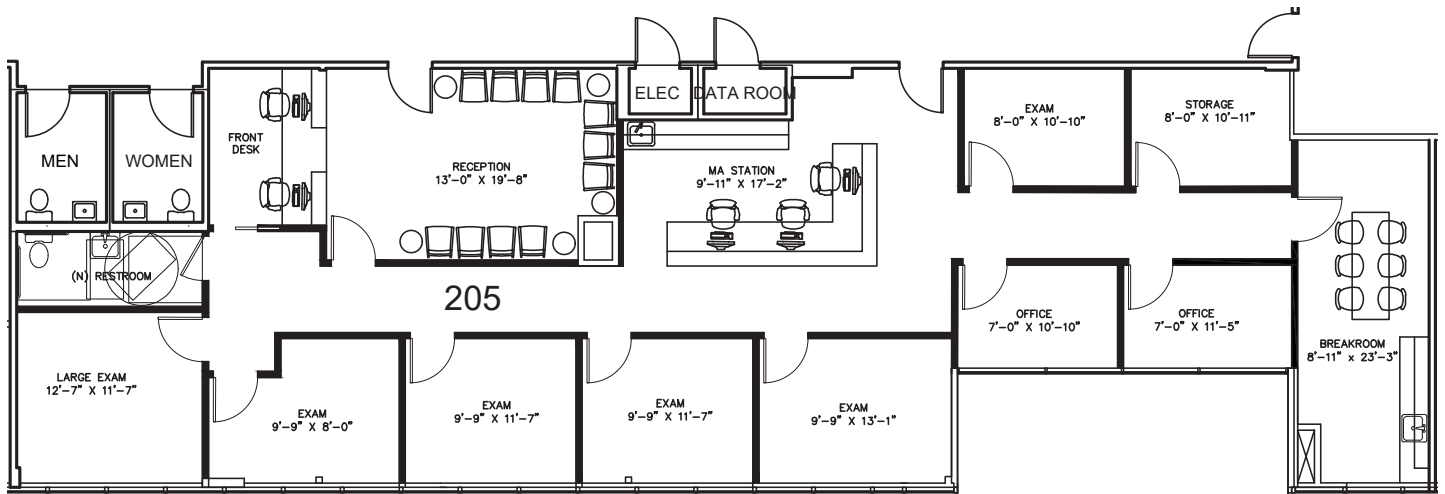


# 2nd Floor Availabilities

Suite 205: ±2,743 RSF | ±2,353 USF



Hypothetical Plan:



For Leasing Information:

Lael Crompton | Senior Director of Leasing  
Phone: 858-794-1900 | [lcrompton@pmbres.com](mailto:lcrompton@pmbres.com)  
[www.pmbres.com](http://www.pmbres.com) | CA Lic. 01871298

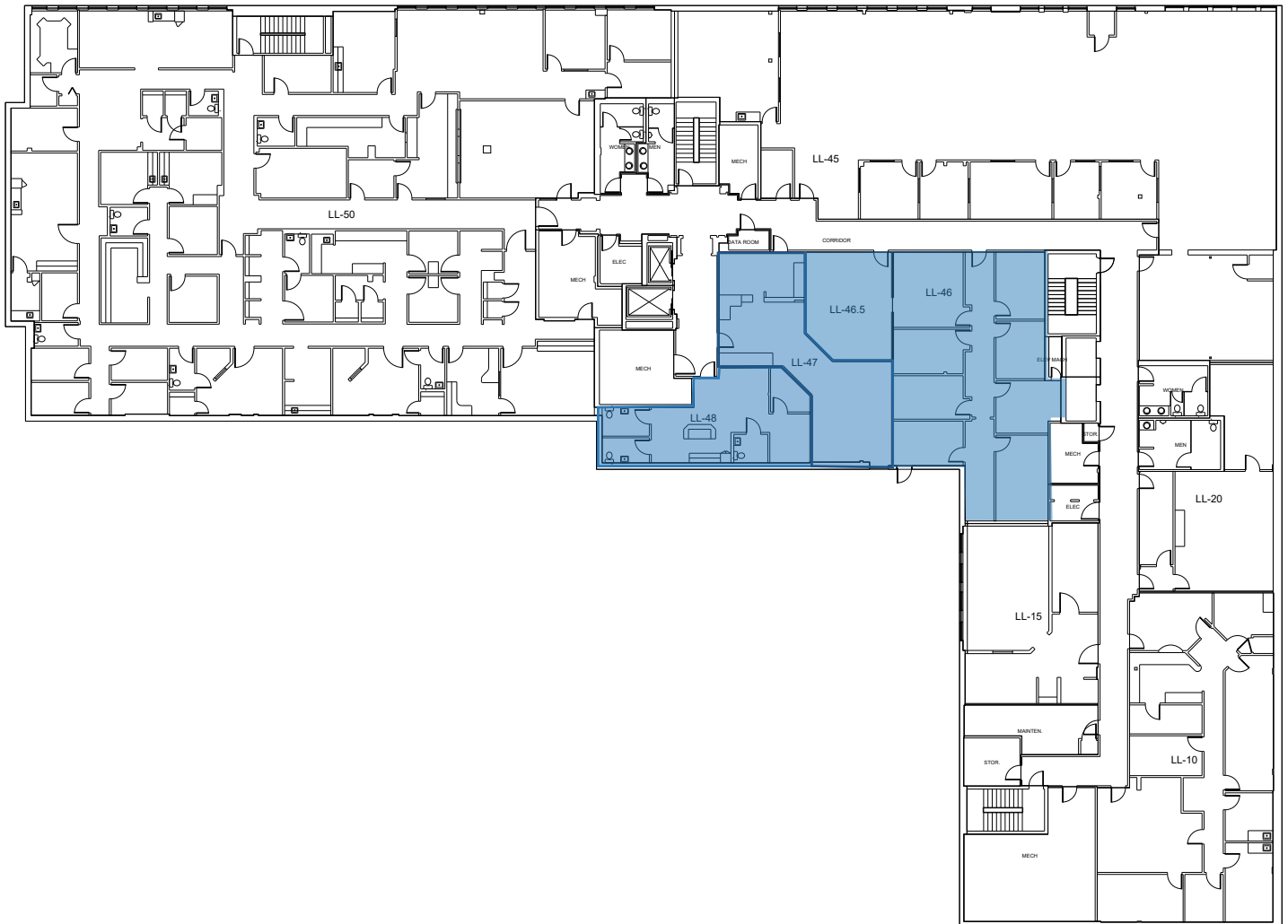


PMB Real Estate Services

# Lower Level Availabilities

Suites LL-46 - LL-48:  $\pm 4,194$  RSF

Divisible to  $\pm 842$  RSF



## For Leasing Information:

Lael Crompton | Senior Director of Leasing  
Phone: 858-794-1900 | [lcrompton@pmbres.com](mailto:lcrompton@pmbres.com)  
[www.pmbres.com](http://www.pmbres.com) | CA Lic. 01871298



PMB Real Estate Services