

# FOR LEASE

2614 CHAPEL LAKE DRIVE, GAMBRILLS, MD 21054



CHESAPEAKE RETINA  
CENTERS



Office / Medical Space For Lease

Laurie Murphy-Zuiderhof  
443.756.5102  
Laurie@hyattcommercial.com

Treva Ghattas  
301.991.6334  
treva@hyattcommercial.com

## HIGHLIGHTS

- Centrally Located in Waugh Chapel Town Centre
- Walking Distance to Popular Stores and Eateries
- Join Chesapeake Retina Centers
- Potential Building Signage
- Less Than 15 Minutes to Ft. Meade, NSA, AAMC and BWMC
- Over 70,000 Vehicles Per Day

## OFFERING



# FOR LEASE

## OFFICE SPACE

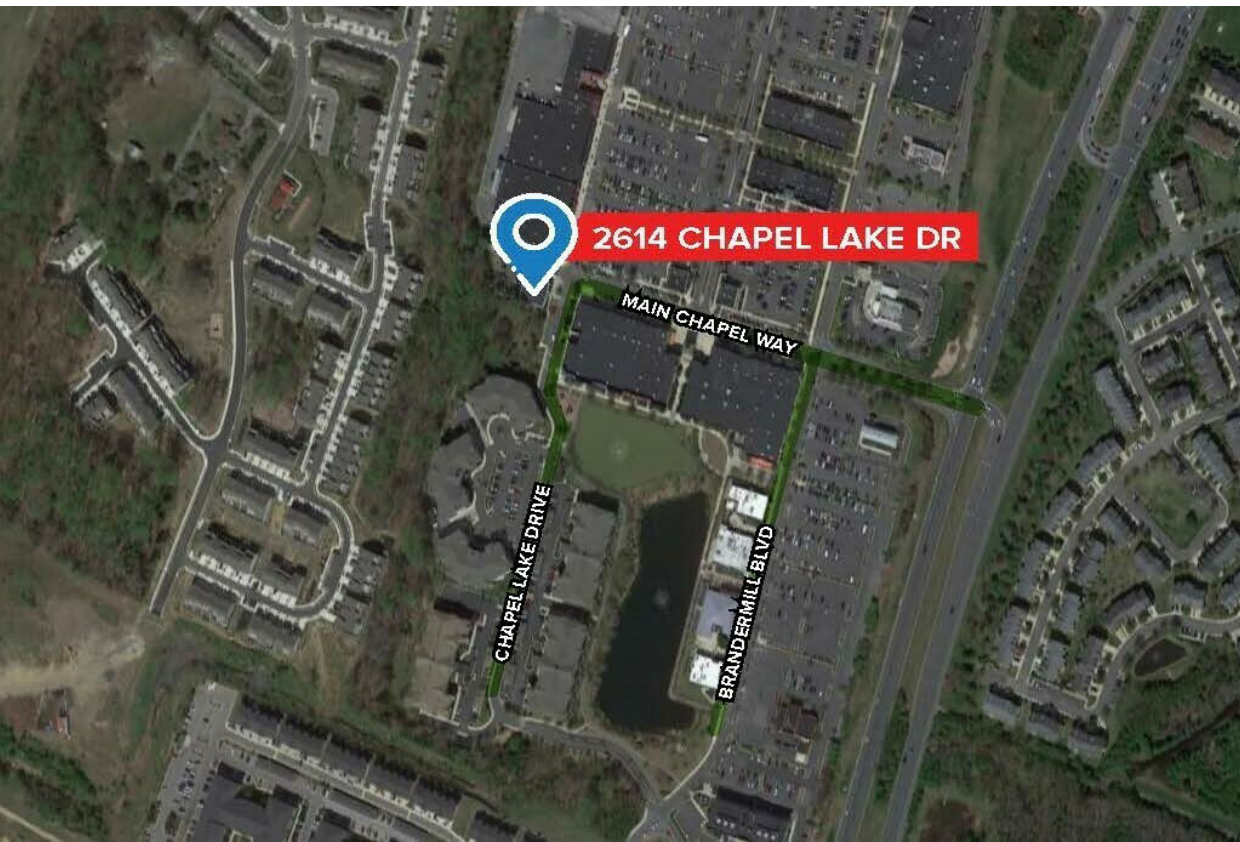
Building Size	7,300 SF
Price	Negotiable
Lease Type	Full Service
Building Class	A

### SPACES

### SPACE SIZE

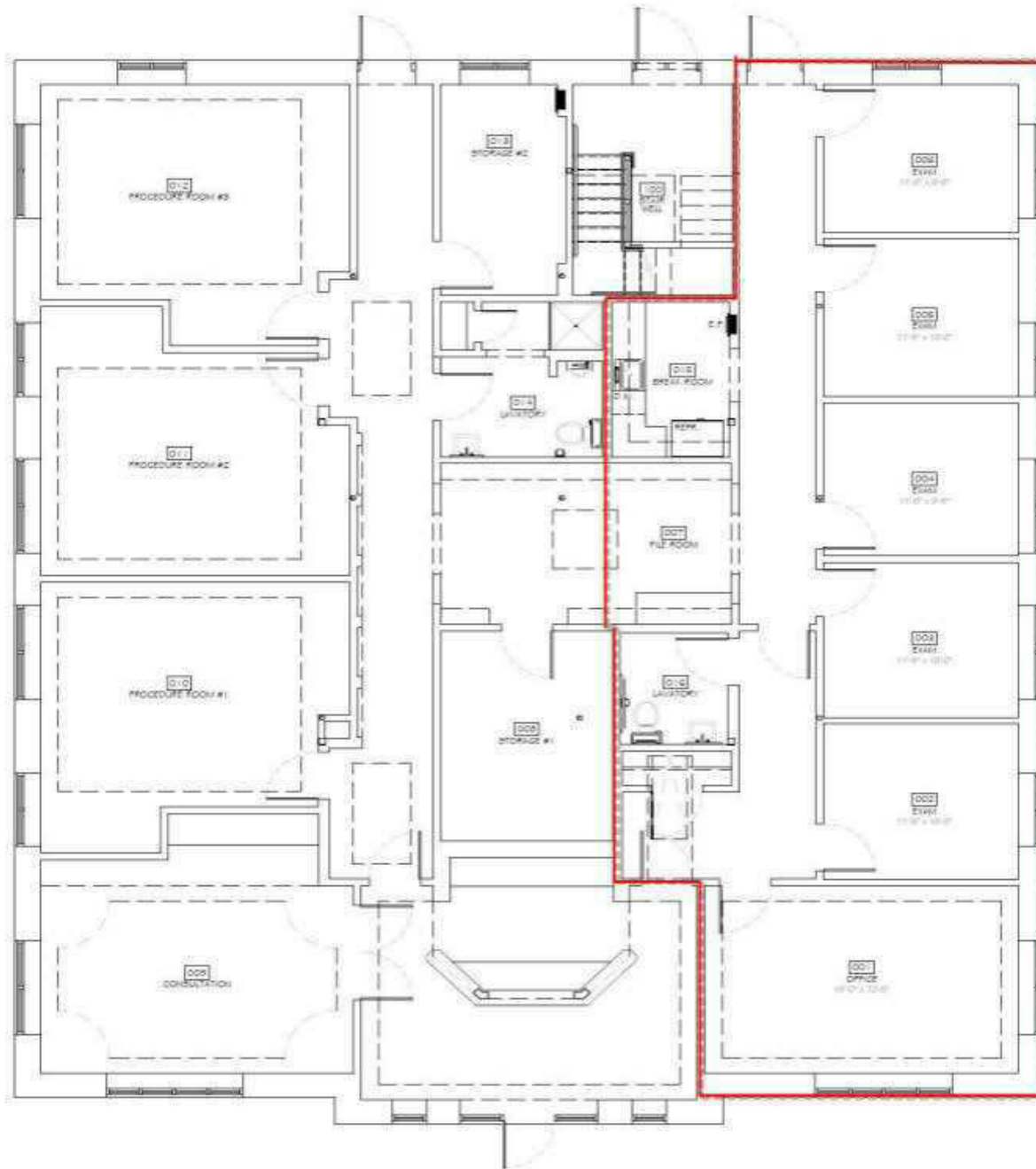
Professional Office Space

1,500 SF



# ADDITIONAL PHOTOS





# RETAILER MAP



**SUBJECT**


The Village at Waugh Chapel Shopping Center

Waugh Chapel Towne Centre

--	--	--	--

PRG-Archers

Davidsonville Rd

Crofton Pkwy


Johns Hopkins Rd

Low Av

en Dr

Ballsway

Underv

Gorden Rd

# DEMOGRAPHICS



## 2023 SUMMARY

	1 MILE	5 MILES	10 MILES
Population	9,996	93,713	573,669
Households	3,802	34,953	208,598
Average Household Size	2.6	2.7	2.8
Average Age	37	39	40
Average Household Income	\$163,993	\$175,691	\$155,290



573,669

Population



2.8

Average HH Size



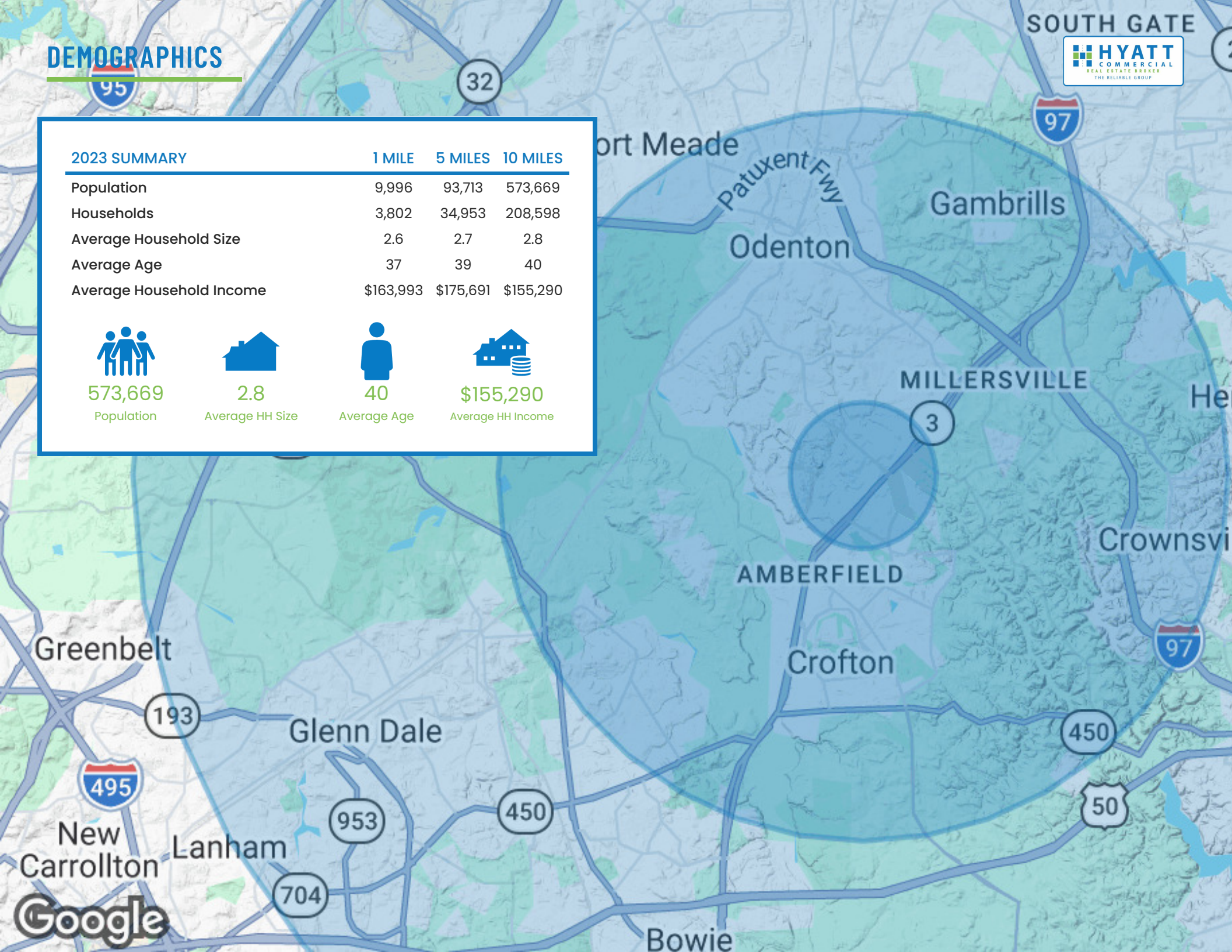
40

Average Age



\$155,290

Average HH Income





# CONTACT

**HYATT COMMERCIAL**  
410.266.8800  
2568A Riva Rd, Suite 300, Annapolis, MD 21401



**Laurie Murphy-Zuiderhof**  
443.756.5102  
Laurie@hyattcommercial.com

**Treva Ghattas**  
301.991.6334  
treva@hyattcommercial.com

While we have no reason to doubt the accuracy of any of the information supplied, we cannot, and do not, guarantee its accuracy. All information should be independently verified prior to a purchase or lease of the property. We are not responsible for errors, omissions, misuse, or misinterpretation contained herein and make no warranty of any kind, express or implied, with respect to the property or any other matters. The property is subject to price change or withdrawal without notice.