

LINE TYPES:
 --- BOUNDARY LINE
 --- EASEMENT
 --- DRIVEWAY/ROAD
 --- FENCING
 --- GROUND WIRE
 --- STRUCTURE

LEGEND:
 ADW- ASPHALT DRIVEWAY
 A/C- AIR CONDITIONING
 A/W- AREAWAY
 BE- BASEMENT ENTRANCE
 BR- BUILDING RESTRICTION LINE
/>
 GW- CONCRETE DRIVEWAY
 CONC- CONCRETE
 ER- ELECTRICAL RISER
 FOS- FIBER OPTICS UTILITY BOX
 FGW- GRAVEL DRIVEWAY
 GEN- GENERATOR
 IPE- IRON PIPE FOUND
 IRS- IRON ROD SET
 IRF- IRON ROD FOUND
 LP- LIGHTPOLE
 MH- MANHOLE
 PAD- CONCRETE PAD
 PAT- PAVO
 PP- POWER POLE
 R/W- RIGHT OF WAY
 SMH- SANITARY MANHOLE
 ST- STOOP
 TELE- TELEPHONE PEDESTAL
 TR/TRANS- TRANSFORMER
 WM- WATER METER
 WV- WATER VALVE

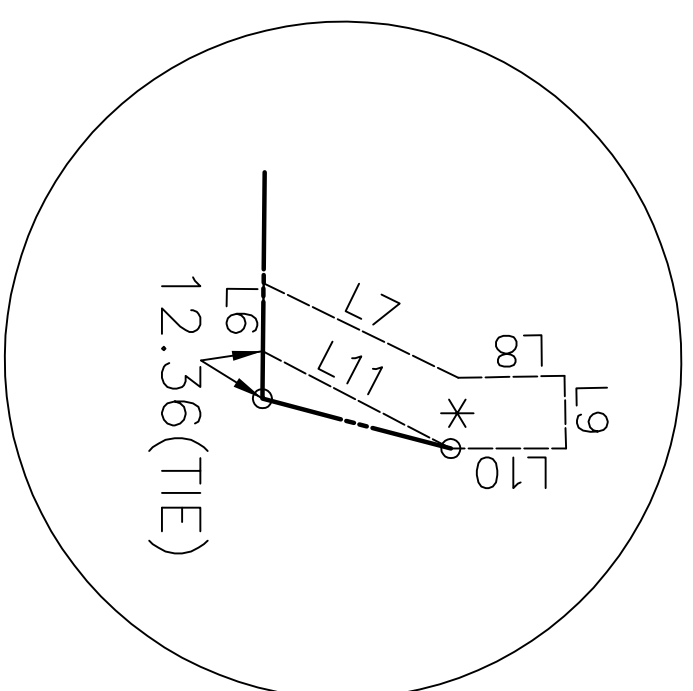
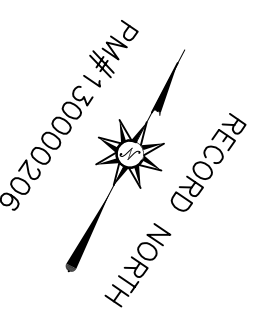
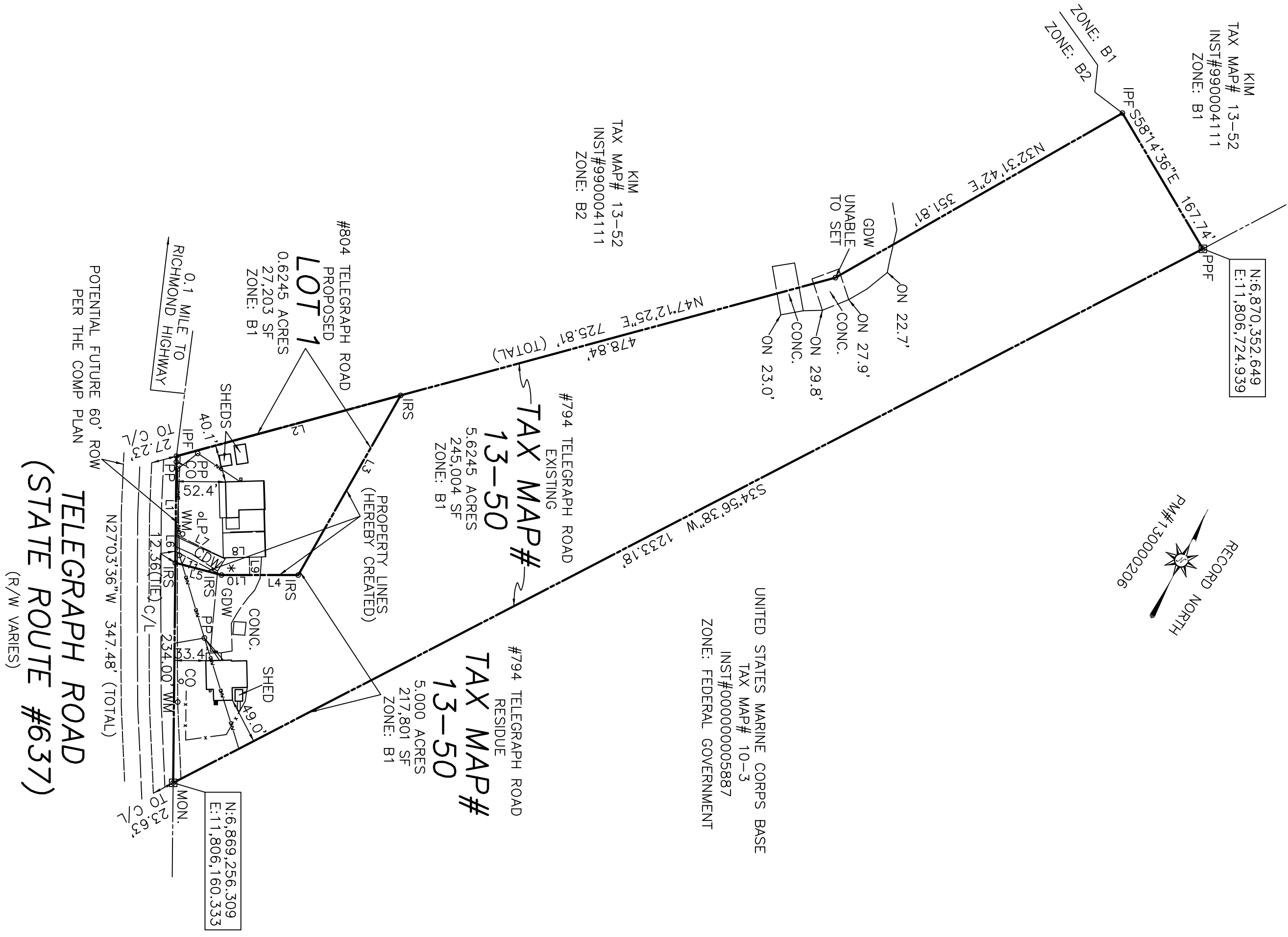
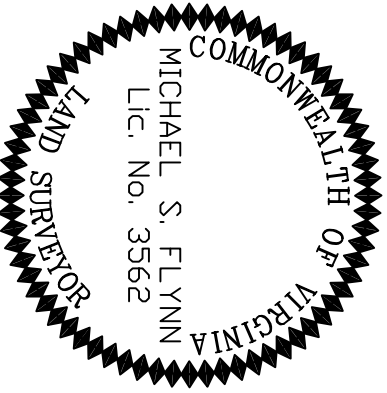
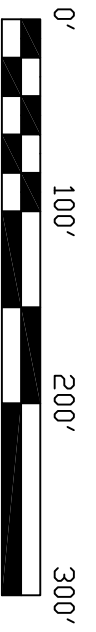
*PROPOSED
 SHARED DRIVEWAY
 EASEMENT

BOUNDARY LINE TABLE

LINE	BEARING	DISTANCE
L1	N27°03'36"W	113.48'
L2	N47°12'25"E	246.97'
L3	S02°02'45"W	219.98'
L4	S62°21'45"W	81.96'
L5	S77°11'46"W	50.76'

PRIVATE ACCESS EASEMENT LINE TABLE

LINE	BEARING	DISTANCE
L6	N34°45'20"W	17.70'
L7	N80°33'59"E	56.39'
L8	N53°33'50"E	27.64'
L9	S36°35'09"E	18.96'
L10	S54°40'00"W	30.00'
L11	S82°02'59"W	53.12'



MINOR SUBDIVISION
 TAX MAP# 13-50
 WONG DIVISION
 (INSTRUMENT# 200013481)
 GRIFFIS-WIDEWATER MAGISTERIAL DISTRICT
 STAFFORD COUNTY, VIRGINIA
 SCALE = 1"=100' DATE: 05-10-23

MERESTONE LAND SURVEYING PLLC
 LAND SURVEYING & G.P.S. SERVICES
 MERESTONE LAND SURVEYING PLLC
 1229 GARRISONVILLE ROAD #104 STAFFORD VIRGINIA 22556
 (540)752-9197 FAX (540)752-9198