

WOODHAVEN KIN DEVELOPMENT

NEC West Road & I-75
Woodhaven, Michigan






CONTACT
TONY SCHMITT
T: 248.855.6800
tschmitt@midamericagr.com

 **MID-AMERICA**[®]
Real Estate-Michigan, Inc.
38500 Woodward Avenue, Suite 100
Bloomfield Hills, MI 48304
www.midamericagr.com


The information contained herein has either been given to us by the owner of the FORMER BANK PROPERTY or obtained from sources that we deem reliable. We have no reason to doubt its accuracy but we do not guarantee it.

WOODHAVEN KIN DEVELOPMENT

NEC West Road & I-75
Woodhaven, Michigan

- Address**  NEC West Road & I-75
Woodhaven, Michigan
- Available Space**  4+ acres and ability to build
16,000 SF adjacent to Kohl's.
- Traffic Counts** 
I-75:
63,300 vpd, N. of Fort (2011)
- West Road:
39,302 vpd, Btw. Hall & I-75 (2004)
41,497 vpd, Btw. I-75 & Allen (2004)

- Anchors**    

- Features**  Prime new development just off the I-75 and West Road intersection in Woodhaven, Michigan. This development is currently home to Lowe's, Kohl's and the Woodhaven Ford Stamping Plant. Based on the sites strategic location along I-75, it is easily accessible for the Woodhaven consumer as well as the surrounding communities. Great opportunity for additional retail, hotel, or future small shop retail between Kohls & LA Fitness.



CONTACT
TONY SCHMITT
T: 248.855.6800
tschmitt@midamericagr.com



38500 Woodward Avenue, Suite 100
Bloomfield Hills, MI 48304
www.midamericagr.com

WOODHAVEN KIN DEVELOPMENT

NEC West Road & I-75
Woodhaven, Michigan



CONTACT
TONY SCHMITT

T: 248.855.6800
tschmitt@midamericagr.com

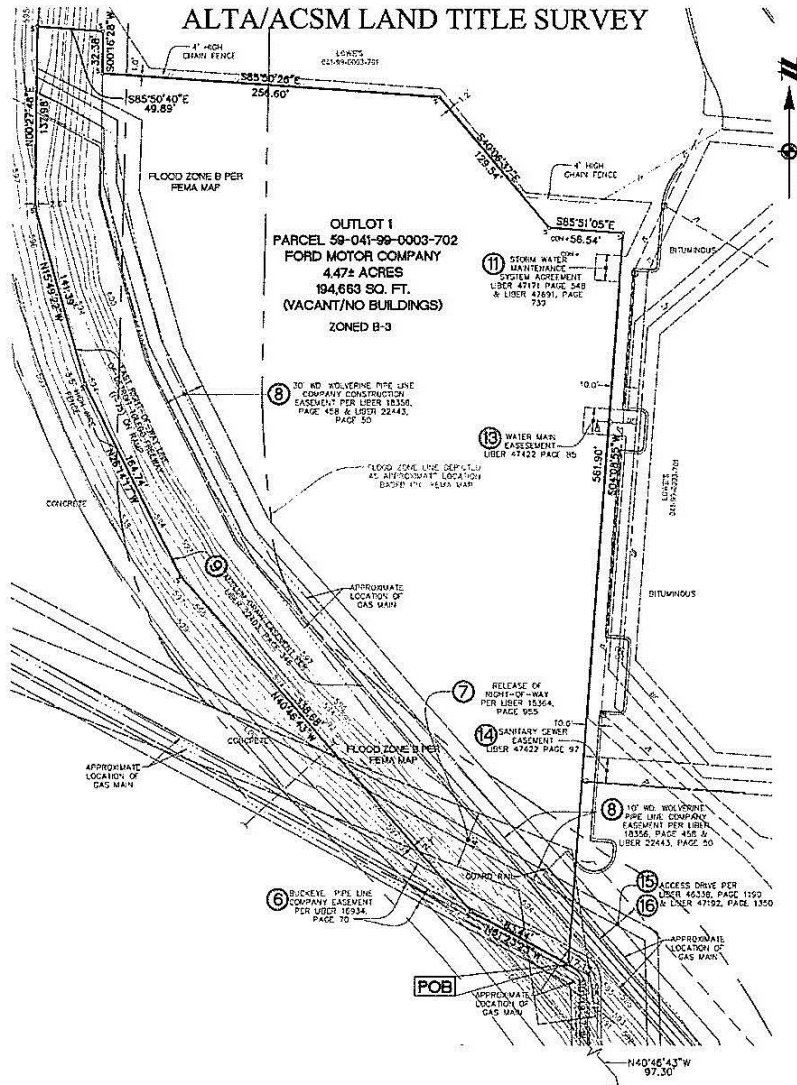


38500 Woodward Avenue, Suite 100
Bloomfield Hills, MI 48304
www.midamericagr.com

The information contained herein has either been given to us by the owner of the FORMER BANK PROPERTY or obtained from sources that we deem reliable. We have no reason to doubt its accuracy but we do not guarantee it.

WOODHAVEN KIN DEVELOPMENT

NEC West Road & I-75
Woodhaven, Michigan



Trade Area Demographics

1 Mile	2 Mile	3 Mile	5 Mile
7,402 Est. Population	27,950 Est. Population	56,634 Est. Population	136,443 Est. Population
\$88,161 Median HH Income	\$76,350 Median HH Income	\$72,633 Median HH Income	\$66,434 Median HH Income
2,713 Est. Households	10,195 Est. Households	20,825 Est. Households	51,205 Est. Households
5,542 Est. Daytime Pop.	12,694 Est. Daytime Pop.	22,104 Est. Daytime Pop.	55,213 Est. Daytime Pop.

CONTACT

TONY SCHMITT

T: 248.855.6800

tschmitt@midamericagr.com



38500 Woodward Avenue, Suite 100
Bloomfield Hills, MI 48304
www.midamericagr.com