



VENEZIA

FOR LEASE • COMMERCIAL SPACE IN GOULDS, MIAMI
11995 SW 216th STREET • MIAMI, FL 33170



CONTACT US:

SPENCER DAVIS
Advisor
239.564.1313
spencer.davis@trinitycre.com

CHRIS BARNEY
Partner
954.520.7692
chris.barney@trinitycre.com

SAM DALTON
Advisor
954.520.7692
sam.dalton@trinitycre.com

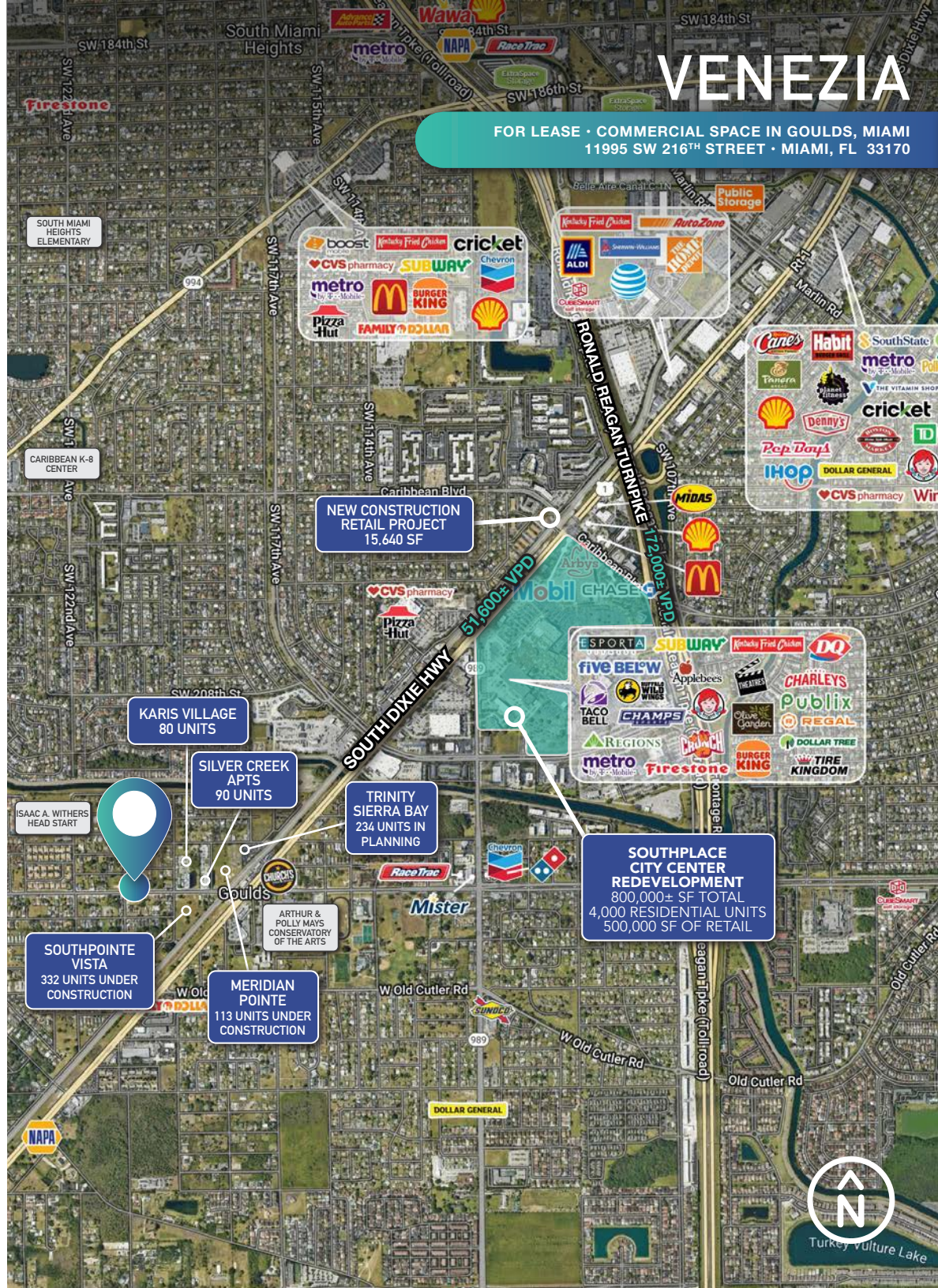
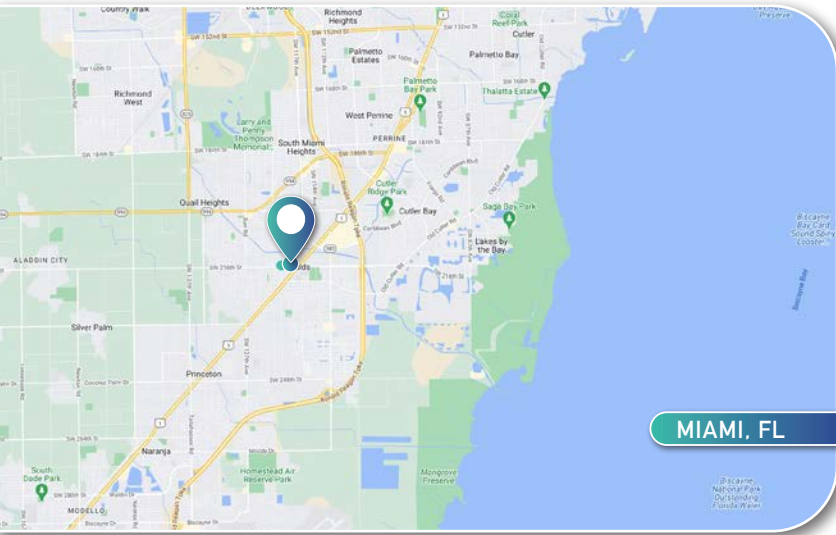


PROPERTY FEATURES

- PRICE** CALL FOR DETAILS
- AVAILABLE** 1,716 - 4,455± SF
- ZONING** Commercial (Miami-Dade County)
- LOCATION** The subject site is located at the intersection of SW 216th St & SW 120th Ave.

2024 DEMOGRAPHICS VENEZIA

	1 MILE	3 MILE	5 MILE
AVERAGE H.H INCOME	\$82,884	\$99,018	\$106,510
POPULATION	17,100	120,486	268,765
EMPLOYMENT DENSITY	4,572	31,863	80,302



VENEZIA

FOR LEASE • COMMERCIAL SPACE IN GOULDS, MIAMI
11995 SW 216th STREET • MIAMI, FL 33170



trinitycre.com
1951 NW 19th St, Ste 103, Boca Raton, FL 33431
© 2024 Trinity Commercial Group
This information is considered accurate, but not guaranteed.



VENEZIA

FOR LEASE • COMMERCIAL SPACE IN GOULDS, MIAMI
11955 SW 216TH STREET • MIAMI, FL 33170

ZOOMED-IN AERIAL



SOUTHPLACE CITY CENTER REDEVELOPMENT
800,000± SF TOTAL
4,000 RESIDENTIAL UNITS
500,000 SF OF RETAIL



KARIS VILLAGE
80 UNITS

SILVER CREEK APTS
90 UNITS

TRINITY SIERRA BAY
234 UNITS IN PLANNING

MERIDIAN POINTE
113 UNITS UNDER CONSTRUCTION

SOUTHPOINTE VISTA
332 UNITS UNDER CONSTRUCTION

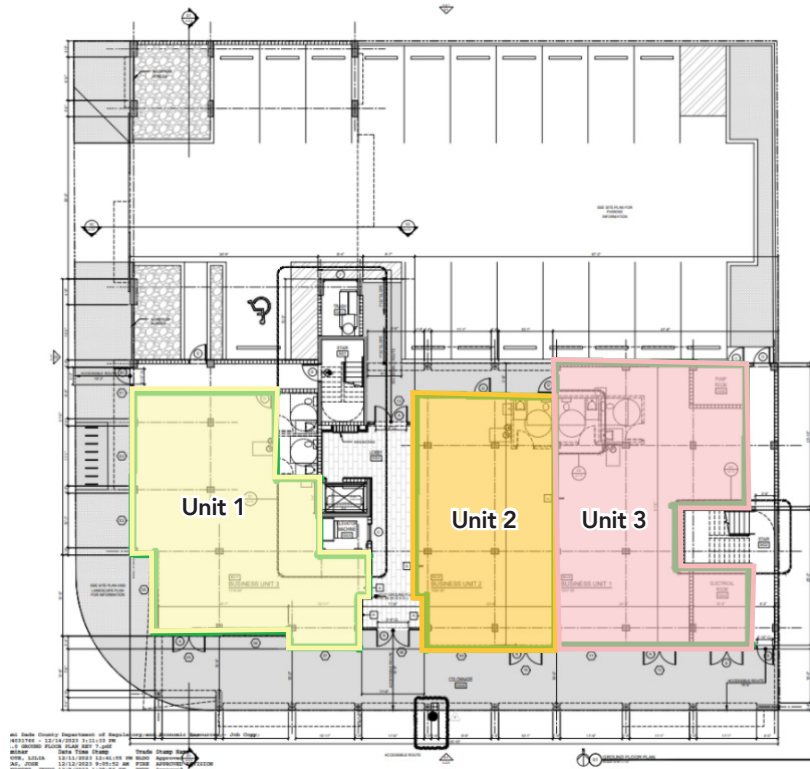


trinitycre.com
1951 NW 19th St, Ste 103, Boca Raton, FL 33431
© 2024 Trinity Commercial Group
This information is considered accurate, but not guaranteed.

VENEZIA

FOR LEASE • COMMERCIAL SPACE IN GOULDS, MIAMI
11995 SW 216TH STREET • MIAMI, FL 33170

SITE PLAN



AVAILABLE	
UNIT	SIZE (sf)
Unit 1	1,716 sf
Unit 2-3	1,222 sf - 4,455 sf
TOTAL: 4,455 SF	



trinitycre.com
1951 NW 19th St, Ste 103, Boca Raton, FL 33431
© 2024 Trinity Commercial Group
This information is considered accurate, but not guaranteed.

