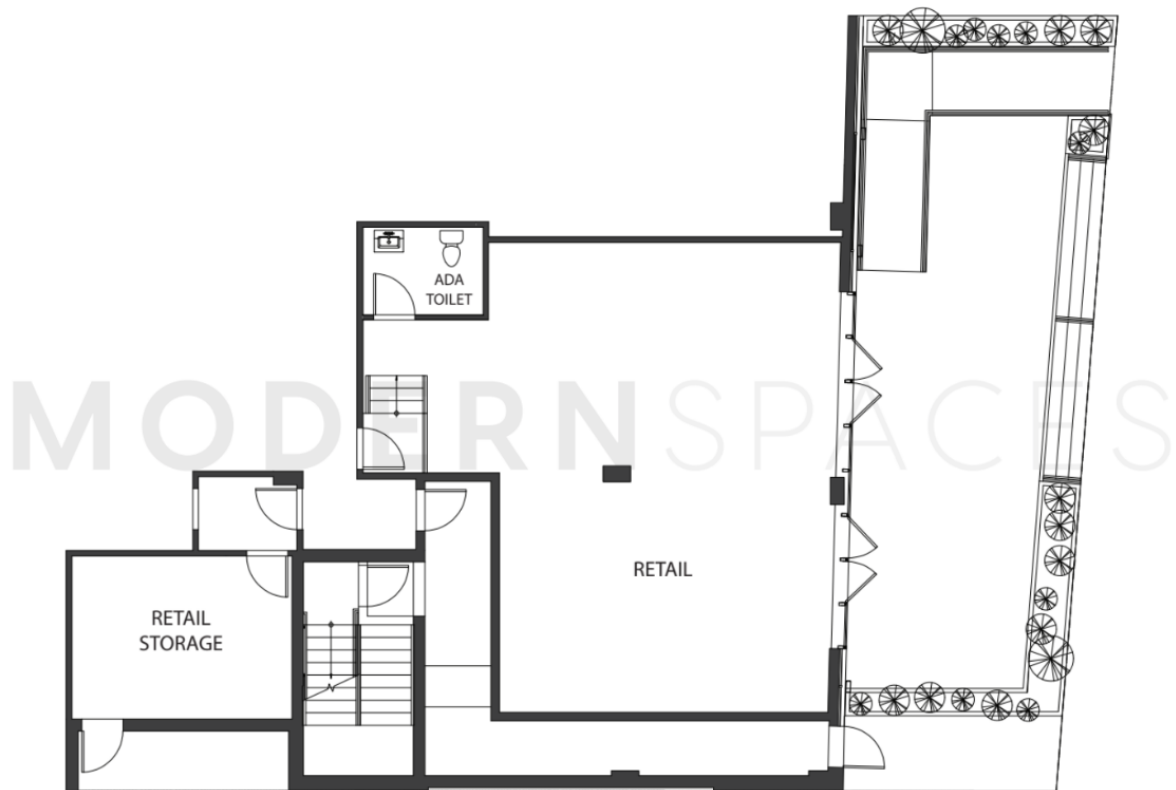


# RETAIL SPACE AVAILABLE AT BERGEN FLATS

669 BERGEN AVENUE, JERSEY CITY, NJ 07304



**INTERIOR 1100+ SF | TERRACE 1000+ SF | STORAGE 200 SF**

## Prime Retail Space at McGinley Square

- High-Traffic Location: Positioned along Bergen Ave in McGinley Square's bustling retail corridor.
- Vibrant Neighborhood: Surrounded by Jersey City's top-rated restaurants, bars, and shops.
- New Development: Brand-new building with 40+ residential units above.
- Rapid Growth: Hundreds of units recently completed in the neighborhood, with even more coming to market in the next two years.
- Perfect for Business Growth: Ideal for expanding an established brand or launching a new venture.
- Flexible Use: Suitable for a variety of business types.
- Brokers Welcome



**CONTACT ME FOR PRICING**

**KENNY LO**

Licensed Real Estate  
Salesperson  
917-202-5901  
kenny@modernspacesnj.com