

HWY 10 OFFICE

215 30TH ST N, SUITE 101, MOORHEAD, MN, 56560



FOR LEASE



OFFICE SPACE FOR LEASE IN MOORHEAD NEAR HWY 10

Space Available: 6,637 SF

Base Rent: \$14.00 PSF

Patrick Vesey | 701.239.5840

patrick.vesey@goldmark.com

Goldmark Commercial Real Estate

www.goldmarkcommercial.com

HWY 10 OFFICE

215 30TH ST N, SUITE 101, MOORHEAD, MN, 56560



SPACE AVAILABLE

6,637 SF

BASE RENT

\$14.00 PSF

TENANT EXPENSES

Gas/ Electric
Phone/Internet
Janitorial

PROPERTY DESCRIPTION:

Office space near Hwy 10 in Moorhead with multiple offices, work rooms and breakroom. Large open space for storage or training. Easily accessible location, check it out today!

PROPERTY FEATURES

- Multiple offices
- Large open area for storage or training
- Small work rooms

NEIGHBORS

- Buffalo Wild Wings
- Target
- Walmart
- Runnings
- Starbucks

This information has been secured from sources we believe to be reliable, but we make no representation or warranties, expressed or implied, as to the accuracy of the information. Interested parties should conduct their own independent investigations and rely only on those results.

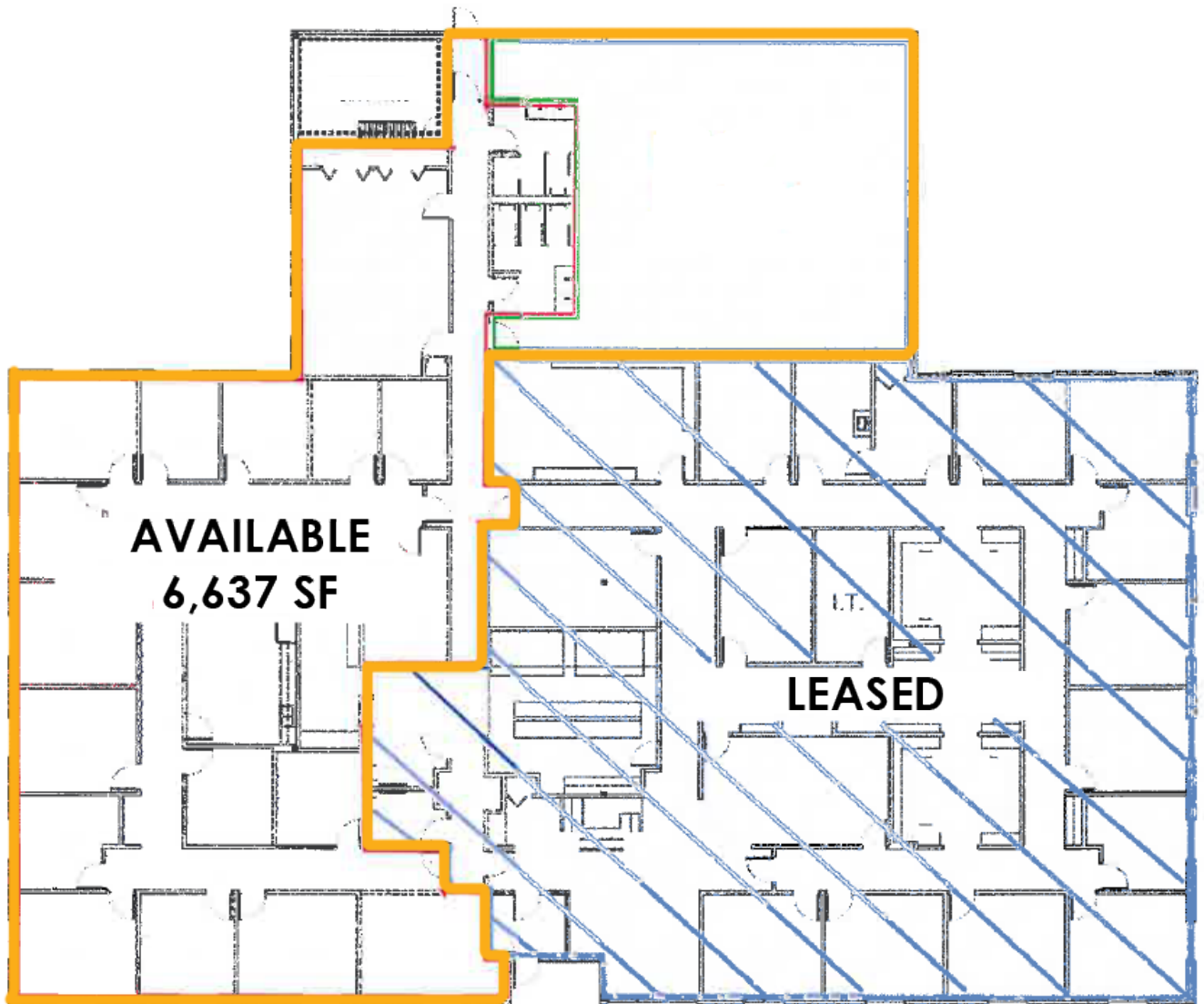


HWY 10 OFFICE

215 30TH ST N, SUITE 101, MOORHEAD, MN, 56560

GOLDMARK[™]
COMMERCIAL REAL ESTATE INC

FLOORPLAN



HWY 10 OFFICE

215 30TH ST N, SUITE 101, MOORHEAD, MN, 56560



HWY 10 OFFICE

215 30TH ST N, SUITE 101, MOORHEAD, MN, 56560


GOLDMARK™
COMMERCIAL REAL ESTATE INC

