

## CPR VACANT LAND ♦ Lots A/B/C

A = 0.438 Acre ♦ B = 0.355 Acre ♦ C = 0.348 Acre

[www.KulaLots.info](http://www.KulaLots.info)

**Jeannie Kong-Evarts**  
REALTOR® (S), RS-68054  
[JeannieKongEvarts@Gmail.com](mailto:JeannieKongEvarts@Gmail.com)  
**(808) 276-1832**



**Kenneth M. "Ken" Hayo**  
Principal Broker/Owner, RB-15529  
[Ken@MauiRealEstateAdvisors.com](mailto:Ken@MauiRealEstateAdvisors.com)  
**(808) 283-8435**

[www.MauiRealEstateAdvisors.com](http://www.MauiRealEstateAdvisors.com)

Information herein may contain inaccuracies and is provided without warranty or guaranty of any kind. Buyer must independently verify any information they deem material or important.

## Kula Lots A, B, C ♦ CPR VACANT LAND

Lovely Ocean & West Maui Mountain Views ~ Useable Gently Sloping Lots

Lot A: 0.438 Acre **\$498,000** Lot B: 0.355 Acre **\$488,000** Lot C: 0.348 Acre **\$488,000**

View High-Resolution Photos, Site Map, & Details At: [www.KulaLots.info](http://www.KulaLots.info)



BUILD YOUR MAUI HOME HERE! New Developer Offering! Three CPR'd Spatial Units are currently being offered for sale: Lot A = 0.438 Acre / Lot B = 0.355 Acre / Lot C = 0.348 Acre. These are Lovely, All Useable, Gently Sloping Lots "Makai" (oceanside) of the Kula Hwy, above Pukalani. Plenty of Room to Build Your Home with lots of space for a wonderful yard, garden, open space, etc. This property is conveniently located to Shopping, Maui's most revered Educational Institutions, and the finest UpCountry Maui has to offer. The property also offers nice Central Maui, Kahului Harbor, and West Maui Mountain Views, with lots of Sunshine, plenty of Fresh Air, and just enough Moisture to make this what many consider to be an Ideal Living Climate and Elevation. At night the Stars Abound, as do the Twinkling Lights of Central Maui. The Airport and Costco are approx. 15 minutes away, the Hospital a mere 20 minutes away, Makawao Town approx. 5 minutes away, and not too far to Paia, Beaches and World Class Surf. Grasp this wonderful opportunity to own your Piece of UpCountry Maui, and begin the Next Chapter of your Life today! MLS# 403134 (Lot A) / MLS# 403135 (Lot B) / MLS# 403136 (Lot C). [www.KulaLots.info](http://www.KulaLots.info)



**Jeannie Kong-Evarts**  
REALTOR® (S)  
RS-68054  
Direct: **(808) 276-1832**  
[JeannieKongEvarts@Gmail.com](mailto:JeannieKongEvarts@Gmail.com)



**Kenneth M. "Ken" Hayo**  
Principal Broker/Owner  
RB-15529  
Direct: **(808) 283-8435**  
[Ken@MauiRealEstateAdvisors.com](mailto:Ken@MauiRealEstateAdvisors.com)







Shared View From All 3 Lots Looking Towards The Lovely West Maui Mountains, Kahului Harbor, & North Shore.



Gorgeous Views Towards The Ocean & West Maui Mountains!



Aerial View Of The Property & Boundaries (Outlined In White).



Aerial View Looking Towards Maui's North Shore.



Aerial View Looking Towards The Northeast.



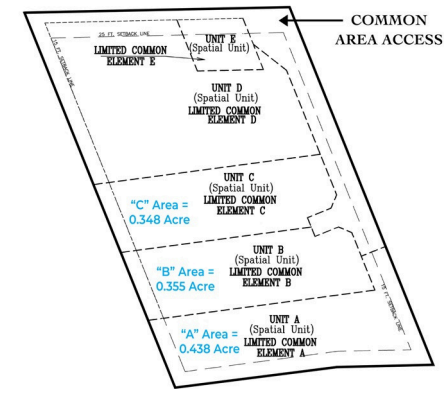
All 3 Lots Have Stunning Views Of Haleakala!



Wood Privacy Entry & Barrier.



Shared Entry & Driveway For All 3 Lots.



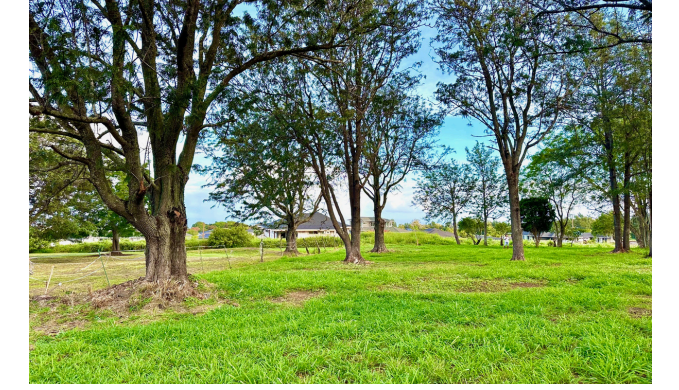
Kula Hwy (Top Of This Site Map) Leads To The Shared Entry.



Entry to Lot B and C



All Useable Land Area & Mostly Cleared.



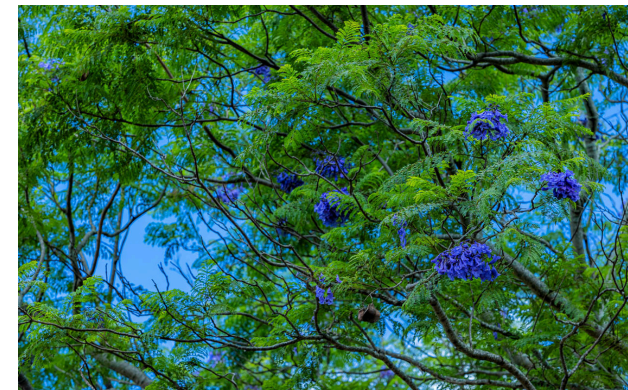
Lot A = 0.438 Acre (Currently Listed At: 498,000)  
See More Photos In MLS# 403134 & [www.KulaLots.info](http://www.KulaLots.info)



Lot B = 0.355 (Currently Listed At: \$488,000)  
See More Photos In MLS# 403135 & [www.KulaLots.info](http://www.KulaLots.info)



Lot C = 0.348 Acre (Currently Listed At: \$488,000)  
See More Photos In MLS# 403136 & [www.KulaLots.info](http://www.KulaLots.info)



Plenty Of Trees On The Property Including Jacaranda Trees.



Proximity To Kula Hwy Affords Easy Access To All Maui Has To Offer! See More Of This Special Property At: [KulaLots.info](http://KulaLots.info)