

PROPERTY DETAILS

- Unit 206: 11,623 SF
- 1,032 SF of Office
- Rental Rate: \$18.00 NNN
- Est. 2025 CAM: \$6.75 PSF
- 2 dock high doors
- 1 grade level door
- Ceiling Height: 28' clear
- Zoning: I1 - General Industrial (City of Fort Lauderdale)
- Parking Ratio: 1.08/1,000 SF
- Strategically located east of I-95, just south of Oakland Park Blvd. on NW 19th Street providing easy access to all of south Florida.

ABOUT PROPERTY



PRICE

\$18.00 NNN



YEAR BUILT

1987



AVAILABLE SF

11,623 SF



PARKING

1.08/1,000 SF



LOCATION

Fort Lauderdale

For more information:

Keith R. Graves, CCIM, SIOR

954.652.2031 | Kgraves@Bergercommercial.Com

bergercommercial.com

Jonathan Thiel

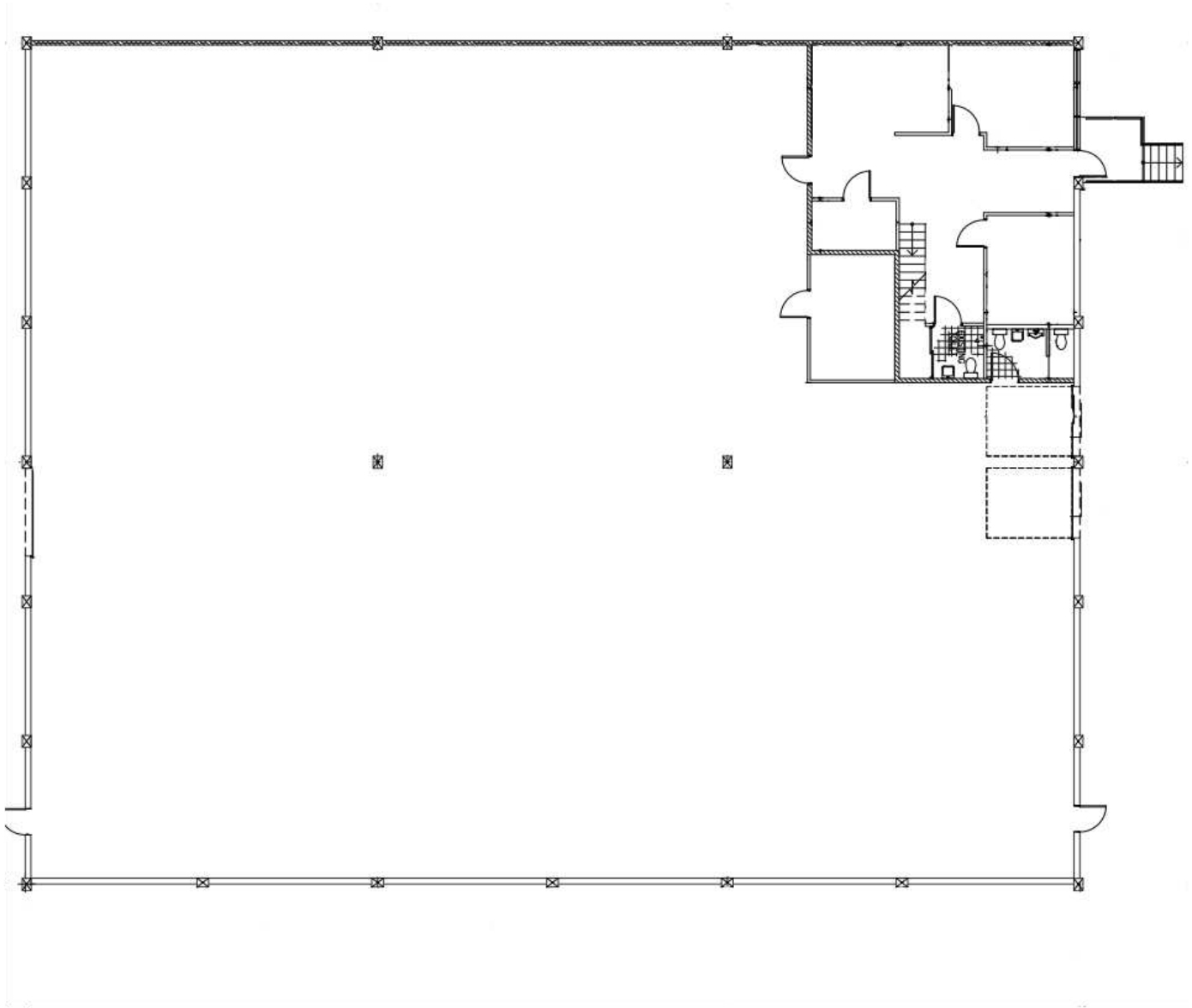
954.652.2020 | Jthiel@Bergercommercial.Com

Daniel Forman

954.652.2004 | Dforman@Bergercommercial.Com



COMMERCIAL BROKERAGE AND PROPERTY MANAGEMENT



For more information:

Keith R. Graves, CCIM, SIOR

954.652.2031 | Kgraves@Bergercommercial.Com

bergercommercial.com

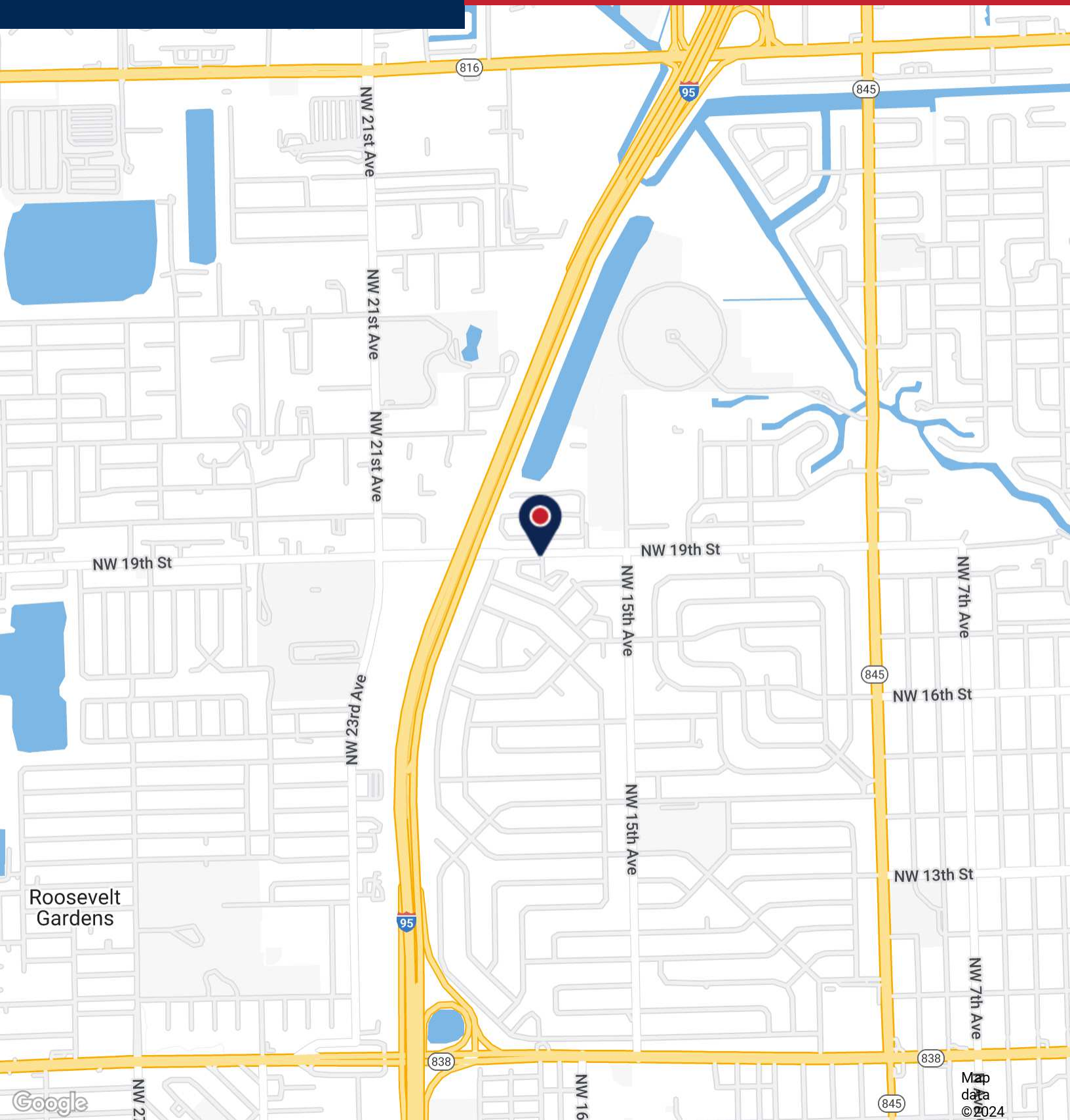
Jonathan Thiel

954.652.2020 | Jthiel@Bergercommercial.Com

Daniel Forman

954.652.2004 | Dforman@Bergercommercial.Com





For more information:

Keith R. Graves, CCIM, SIOR

Jonathan Thiel

Daniel Forman

954.652.2031 | Kgraves@Bergercommercial.com

954.652.2020 | Jthiel@Bergercommercial.com

954.652.2004 | Dforman@Bergercommercial.com

bergercommercial.com

