



2300 US Hwy 70 W, Goldsboro, NC 27530

\$15/SF/YR

\$1.25/SF/MO

Office / Medical Office on major road

Office | Single tenant | 2,833 sq. ft.



Jamal Ajani CCIM
704.488.0024

Listing Added: 06/14/2024
Listing Updated: 06/14/2024

Building Details			
Property Type	Office	Subtype	Medical Office
Tenancy	Single	Total Building SQFT	2,833
Land Acres	0.4	Class	A
Year Built	2000	Stories	1
Total Parking Spaces	15	Power	Electric
Elevators	No	Zoning	O&I
APN	2680488036	County	Wayne County
Submarket	Raleigh NC	Submarket Cluster	RTP

Building Description

Great high traffic location for an office or medical office use. Well maintained building. Plenty space for more than one doctor. A lot of storage space for files and much more. Extra room up stairs for storage or an extra office space.

Building Highlights

Great location with high exposure to Hwy 70 traffic.

Building Location (1 Location)



Details

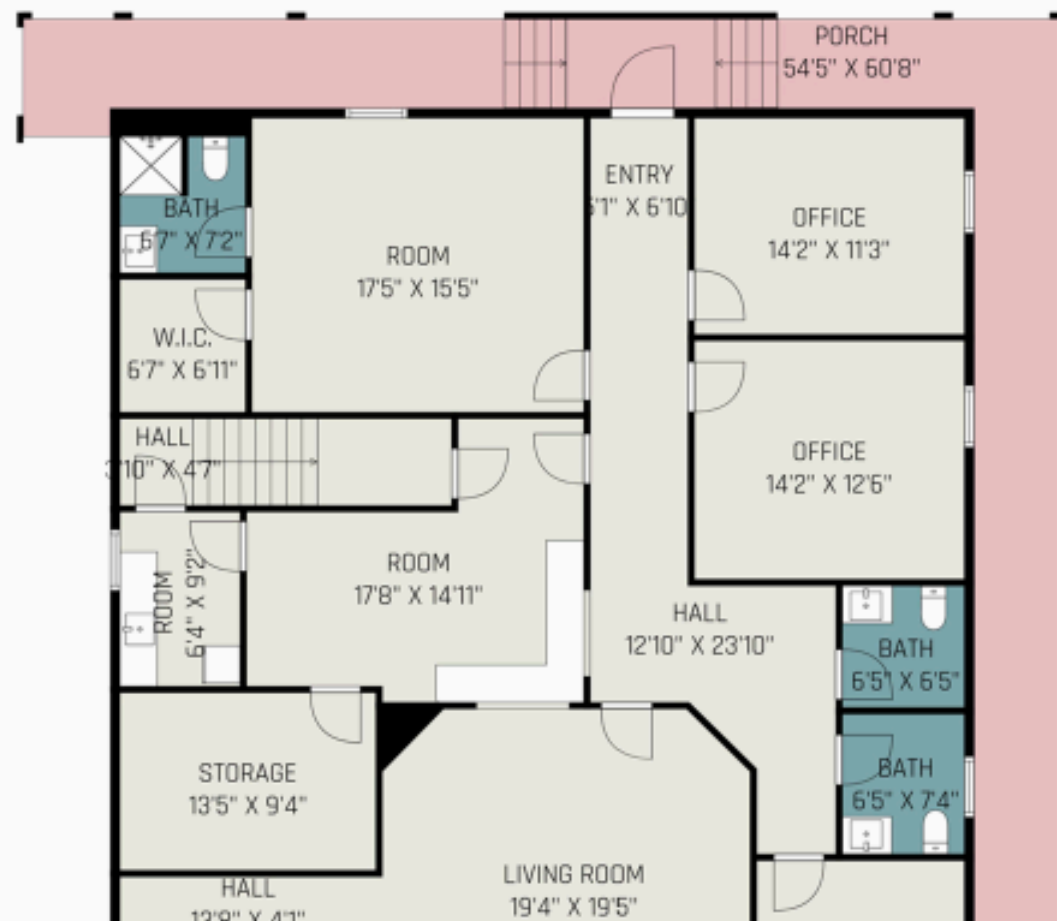
Listing Type	Direct	RSF	2,833 SF
Parking	15	Rate (Per SF)	\$15 / SF / YR
Lease term	2-4 years	Total Monthly Rent	\$3,500
Days on Market	0 days		

2300 U.S. HIGHWAY 70 WEST

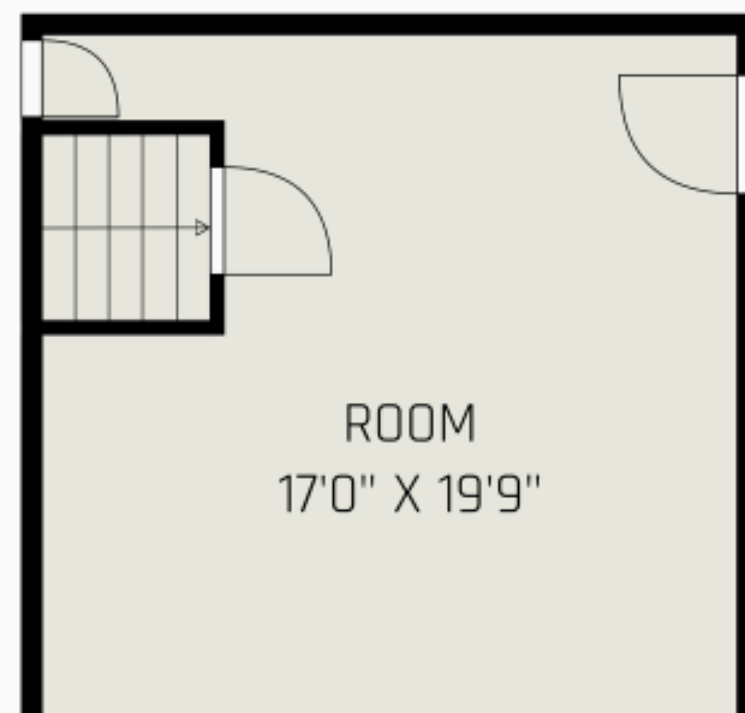
Gross Building Area - 2833 Sq Ft

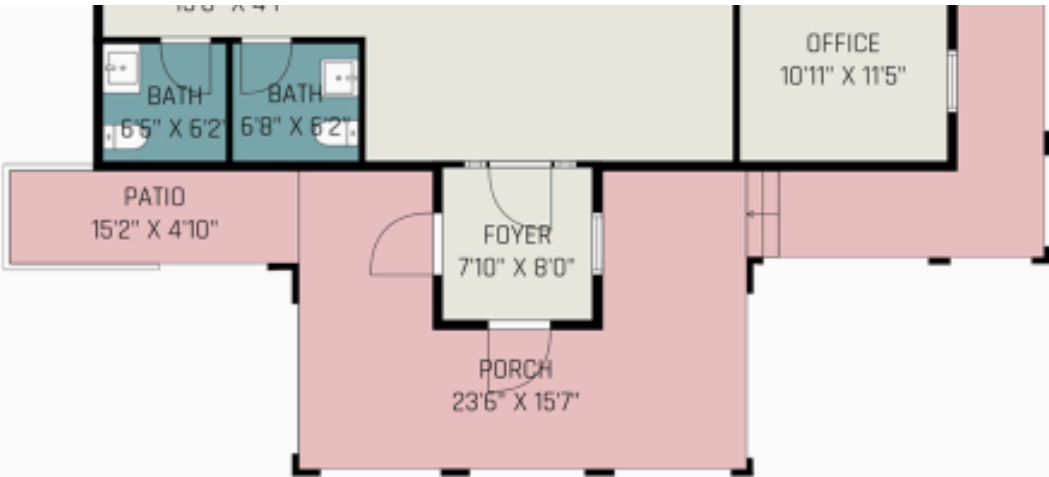
Non - Gross Building Area - 1079 Sq Ft

FIRST FLOOR



SECOND FLOOR





Area Calculation Summary	
Gross Building Area	Calculation Details
First Floor	2441 Sq Ft
Second Floor	392 Sq Ft
Total Gross Building Area	2833 Sq Ft
Non-Gross Building Area	
Open Porch	1079 Sq Ft
Total Non- Gross Building Area	1079 Sq Ft

Notes



Jamal Ajani CCIM
704.488.0024

Property Photos (4 photos)

