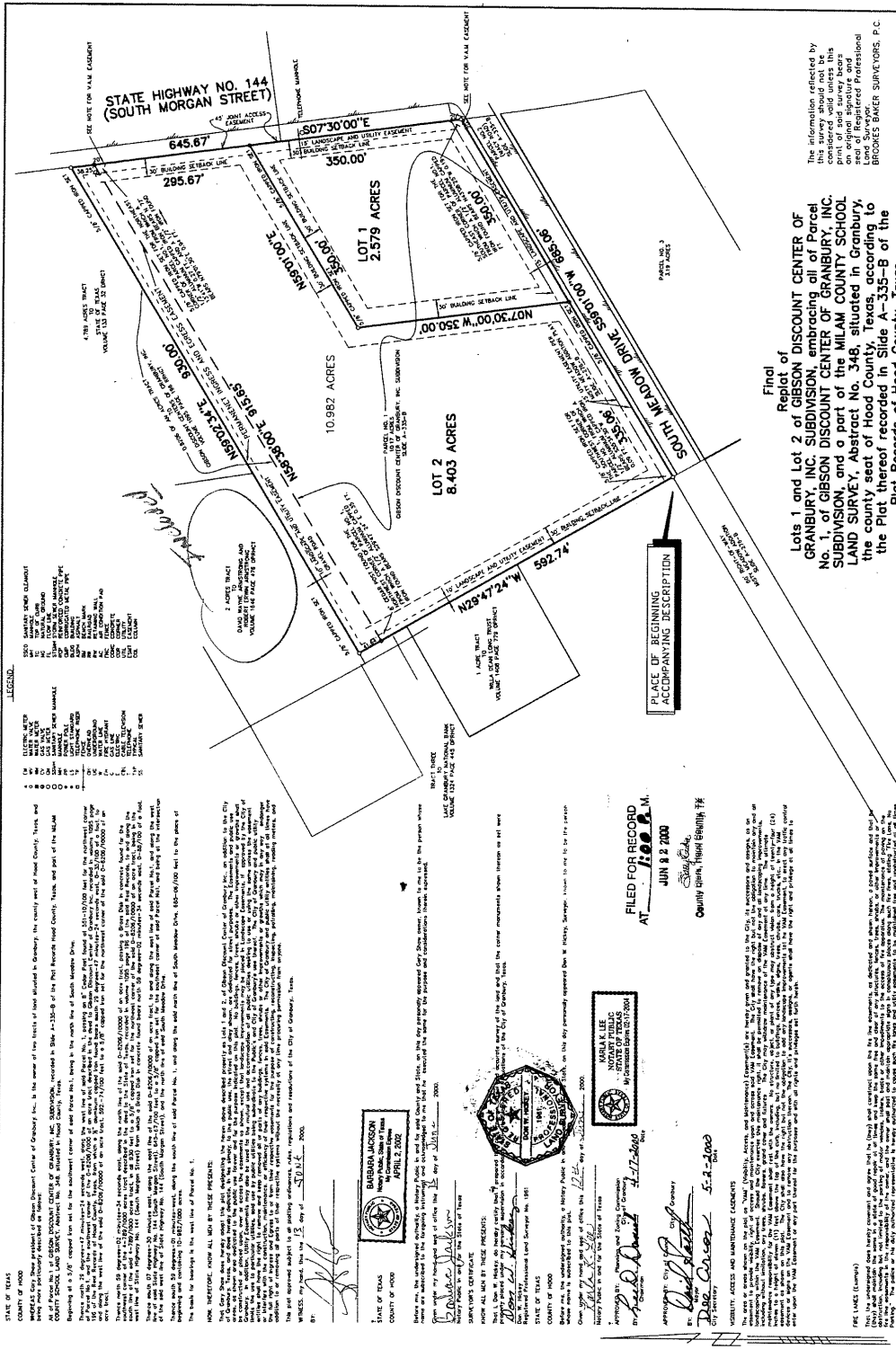


[Handwritten signature]



The information reflected by this plat is based on the survey books and records of the Surveyors and is not to be construed as a warranty of title by the Surveyors. The Surveyors are not responsible for any errors or omissions in this plat. The Surveyors are not responsible for any errors or omissions in this plat. The Surveyors are not responsible for any errors or omissions in this plat.

Final of
Plat
 Lots 1 and Lot 2 of GIBSON DISCOUNT CENTER OF GRANBURY, INC. SUBDIVISION, embracing all of Parcel No. 1, of GIBSON DISCOUNT CENTER OF GRANBURY, INC. SUBDIVISION, and a part of the MILAM COUNTY SCHOOL LAND SURVEY, Abstract No. 348, situated in Granbury, the county seat of Hood County, Texas, according to the Plat thereof recorded in Slide A-335-B of the Plat Records of Hood County, Texas.

LEGEND
 1. 43' ACCESS EASEMENT
 2. 10' UTILITY EASEMENT
 3. 10' UTILITY EASEMENT
 4. 10' UTILITY EASEMENT
 5. 10' UTILITY EASEMENT
 6. 10' UTILITY EASEMENT
 7. 10' UTILITY EASEMENT
 8. 10' UTILITY EASEMENT
 9. 10' UTILITY EASEMENT
 10. 10' UTILITY EASEMENT
 11. 10' UTILITY EASEMENT
 12. 10' UTILITY EASEMENT
 13. 10' UTILITY EASEMENT
 14. 10' UTILITY EASEMENT
 15. 10' UTILITY EASEMENT
 16. 10' UTILITY EASEMENT
 17. 10' UTILITY EASEMENT
 18. 10' UTILITY EASEMENT
 19. 10' UTILITY EASEMENT
 20. 10' UTILITY EASEMENT
 21. 10' UTILITY EASEMENT
 22. 10' UTILITY EASEMENT
 23. 10' UTILITY EASEMENT
 24. 10' UTILITY EASEMENT
 25. 10' UTILITY EASEMENT
 26. 10' UTILITY EASEMENT
 27. 10' UTILITY EASEMENT
 28. 10' UTILITY EASEMENT
 29. 10' UTILITY EASEMENT
 30. 10' UTILITY EASEMENT
 31. 10' UTILITY EASEMENT
 32. 10' UTILITY EASEMENT
 33. 10' UTILITY EASEMENT
 34. 10' UTILITY EASEMENT
 35. 10' UTILITY EASEMENT
 36. 10' UTILITY EASEMENT
 37. 10' UTILITY EASEMENT
 38. 10' UTILITY EASEMENT
 39. 10' UTILITY EASEMENT
 40. 10' UTILITY EASEMENT
 41. 10' UTILITY EASEMENT
 42. 10' UTILITY EASEMENT
 43. 10' UTILITY EASEMENT
 44. 10' UTILITY EASEMENT
 45. 10' UTILITY EASEMENT
 46. 10' UTILITY EASEMENT
 47. 10' UTILITY EASEMENT
 48. 10' UTILITY EASEMENT
 49. 10' UTILITY EASEMENT
 50. 10' UTILITY EASEMENT
 51. 10' UTILITY EASEMENT
 52. 10' UTILITY EASEMENT
 53. 10' UTILITY EASEMENT
 54. 10' UTILITY EASEMENT
 55. 10' UTILITY EASEMENT
 56. 10' UTILITY EASEMENT
 57. 10' UTILITY EASEMENT
 58. 10' UTILITY EASEMENT
 59. 10' UTILITY EASEMENT
 60. 10' UTILITY EASEMENT
 61. 10' UTILITY EASEMENT
 62. 10' UTILITY EASEMENT
 63. 10' UTILITY EASEMENT
 64. 10' UTILITY EASEMENT
 65. 10' UTILITY EASEMENT
 66. 10' UTILITY EASEMENT
 67. 10' UTILITY EASEMENT
 68. 10' UTILITY EASEMENT
 69. 10' UTILITY EASEMENT
 70. 10' UTILITY EASEMENT
 71. 10' UTILITY EASEMENT
 72. 10' UTILITY EASEMENT
 73. 10' UTILITY EASEMENT
 74. 10' UTILITY EASEMENT
 75. 10' UTILITY EASEMENT
 76. 10' UTILITY EASEMENT
 77. 10' UTILITY EASEMENT
 78. 10' UTILITY EASEMENT
 79. 10' UTILITY EASEMENT
 80. 10' UTILITY EASEMENT
 81. 10' UTILITY EASEMENT
 82. 10' UTILITY EASEMENT
 83. 10' UTILITY EASEMENT
 84. 10' UTILITY EASEMENT
 85. 10' UTILITY EASEMENT
 86. 10' UTILITY EASEMENT
 87. 10' UTILITY EASEMENT
 88. 10' UTILITY EASEMENT
 89. 10' UTILITY EASEMENT
 90. 10' UTILITY EASEMENT
 91. 10' UTILITY EASEMENT
 92. 10' UTILITY EASEMENT
 93. 10' UTILITY EASEMENT
 94. 10' UTILITY EASEMENT
 95. 10' UTILITY EASEMENT
 96. 10' UTILITY EASEMENT
 97. 10' UTILITY EASEMENT
 98. 10' UTILITY EASEMENT
 99. 10' UTILITY EASEMENT
 100. 10' UTILITY EASEMENT

STATE OF TEXAS
COUNTY OF HOOD
 I, Barbara Jackson, County Clerk of Hood County, Texas, do hereby certify that the foregoing is a true and correct copy of the original plat as recorded in the Public Records of Hood County, Texas, on the 15th day of April, 2008.

BARBARA JACKSON
 County Clerk
 APRIL 2, 2008

STATE OF TEXAS
 I, Barbara Jackson, County Clerk of Hood County, Texas, do hereby certify that the foregoing is a true and correct copy of the original plat as recorded in the Public Records of Hood County, Texas, on the 15th day of April, 2008.

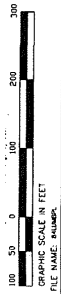
FILED FOR RECORD
AT
JUN 9 2 000
County Clerk, Hood County, Texas

MARLA LEE
 Notary Public
 My Commission Expires 08/27/2008

APPROVED BY:
DAVID G. GIBSON
 President
 GIBSON DISCOUNT CENTER OF GRANBURY, INC.

APPROVED BY:
DAVID G. GIBSON
 President
 GIBSON DISCOUNT CENTER OF GRANBURY, INC.

APPROVED BY:
DAVID G. GIBSON
 President
 GIBSON DISCOUNT CENTER OF GRANBURY, INC.



BRUKES BAKER SURVEYORS
 2000
 1000
 2000
 3000

We marked the corners as shown hereon.
 Surveyed on the ground March 22, 2000.
 BROOKES BAKER SURVEYORS

BROOKES BAKER SURVEYORS
 BROOKES BAKER BUILDING
 517 CAS TOWER
 FORT WORTH, TEXAS 76102
 (817) 335-7151

Slide B-108