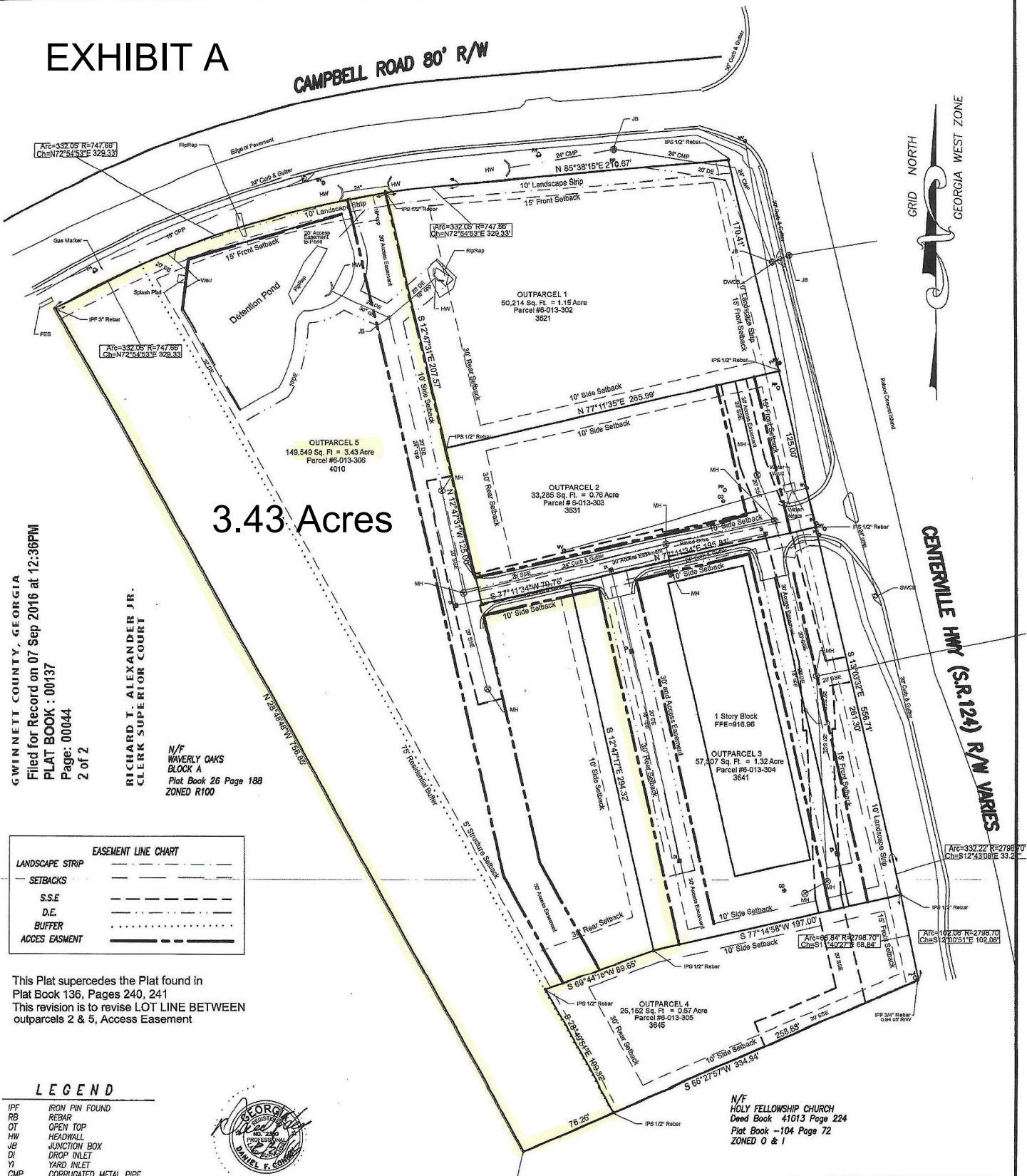


# EXHIBIT A

CAMPBELL ROAD 80' R/W



3.43 Acres

GWINNETT COUNTY, GEORGIA  
 Filed for Record on 07 Sep 2016 at 12:36PM  
 PLAT BOOK : 00137  
 Page: 00044  
 2 of 2

RICHARD T. ALEXANDER JR.  
 CLERK SUPERIOR COURT

N/F WAVERLY OAKS  
 BLOCK A  
 Plat Book 26 Page 188  
 ZONED R100

CENTERVILLE HWY (S.R.124) R/W VARIES

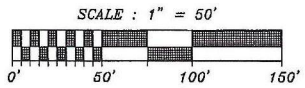
EASEMENT LINE CHART	
LANDSCAPE STRIP	---
SETBACKS	---
S.S.E	---
D.E.	---
BUFFER	---
ACCESS EASEMENT	---

This Plat supercedes the Plat found in  
 Plat Book 136, Pages 240, 241  
 This revision is to revise LOT LINE BETWEEN  
 outparcels 2 & 5, Access Easement

- LEGEND**
- IPF IRON PIN FOUND
  - RB REBAR
  - OT OPEN TOP
  - HW HEADWALL
  - JB JUNCTION BOX
  - DI DROP INLET
  - YI YARD INLET
  - CMP CORRUGATED METAL PIPE
  - I.E. INVERT ELEVATION
  - DWCB DOUBLE WING CATCH BASIN
  - SSMH SANITARY SEWER MANHOLE
  - D.E. DRAINAGE EASEMENT
  - S.S.E. SANITARY SEWER EASEMENT
  - FH FIRE HYDRANT
  - WV WATER VALVE
  - PP POWER POLE
  - B.L. BUILDING SETBACK LINE



CGA 0000  
 This drawing was prepared in conformity with the TECHNICAL STANDARDS for PROPERTY SURVEYS in Georgia as set forth in Chapter 180-7 of the Rules of the Georgia Board of Registration for Professional Engineers and Land Surveyors and set forth in the Georgia Real Act O.C.G.A. 15-6-07.  
 NOT VALID WITHOUT ORIGINAL SIGNATURE AND DATE ON SEAL.  
 THIS DRAWING AND ANY COPIES THEREOF ARE THE PROPERTY OF CONROY & ASSOCIATES, P.C. AND SHALL NOT BE REPRODUCED OR COPIED IN WHOLE OR IN PART, OR OTHERWISE USED WITHOUT WRITTEN PERMISSION OF THE OWNER.  
 NO WARRANTY, EXPRESS OR IMPLIED, IS EXTENDED TO ANY UNPAID THIRD PARTY.



N/F HOLY FELLOWSHIP CHURCH  
 Deed Book 41013 Page 224  
 Plat Book -104 Page 72  
 ZONED O & I

FINAL PLAT FOR:  
**CENTERVILLE POINTE**  
 SURVEYING SERVICES BY:  
**conroy & associates, P.C.**

LAND LOT: 13	SURVEYED: 4-18/19-18
DISTRICT: 6th	DRAWN: 7-14-18 BY: DC
COUNTY: GWINNETT	SCALE: 1"=50'
3643 Centerville Hwy	
SHEET 2 OF 2	

778 McChinnis Ferry Rd  
 Suite 168  
 Suwanee, GA 30024  
 770.851.3301  
 conroyassoc@gmail.com  
**AQ056**