

INDUSTRIAL WAREHOUSE

2501 Jennings St | San Francisco, CA



AVAILABLE FOR LEASE

Jeffrey Ida | Principal
E: jjda@lee-associates.com
P: (415) 828-7679
LIC# 01826381

Doug Ogard | Associate
E: dogard@lee-associates.com
P: (415) 842-1889
LIC# 02103324

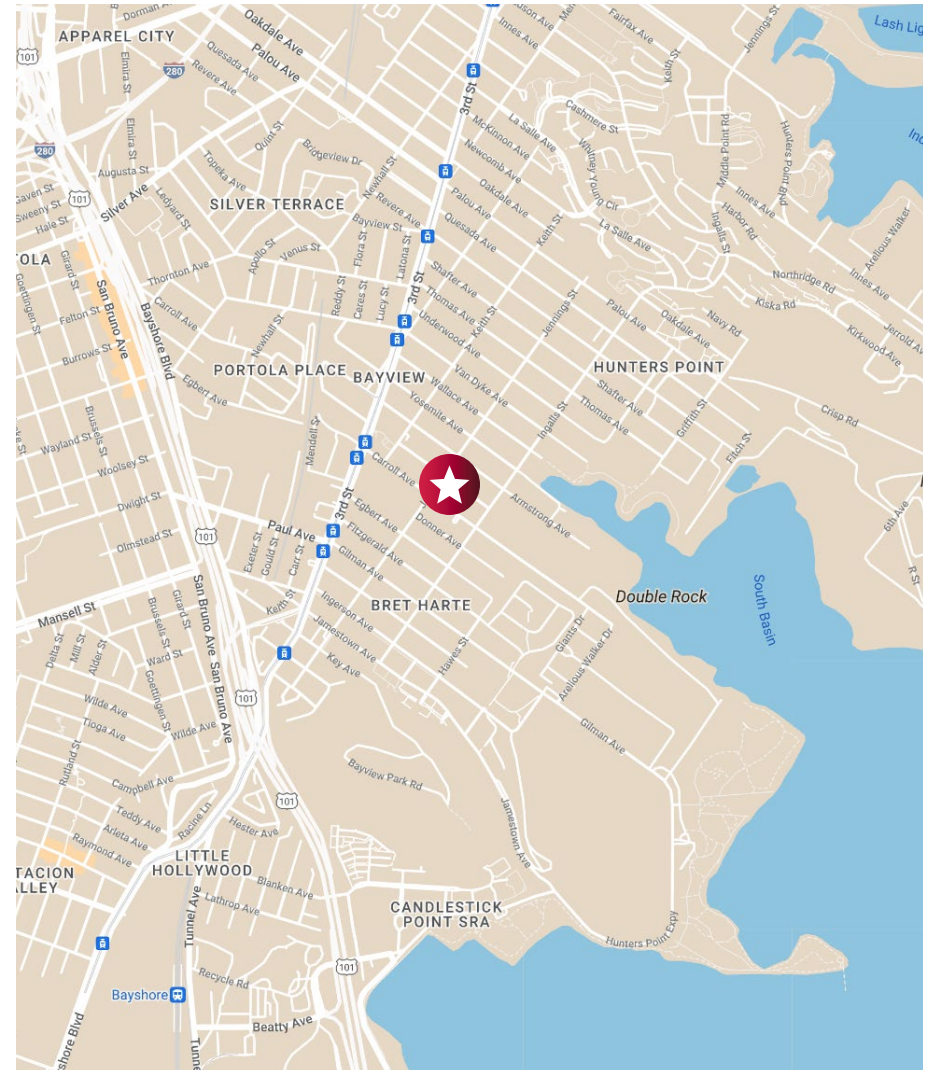
2501 JENNINGS ST | SAN FRANCISCO, CA

Jeffrey Ida | Principal
(415) 828-7679

Doug Ogard | Associate
(415) 842-1889

INDUSTRIAL WAREHOUSE

- 7,500 SF Building
- 18' Clear Height
- 2 Grade Level Doors
- Professional Spray Booth
- Insulated roof
- Mezzanine storage
- 200 Amp 3 Phase 240 Volt
- Two Electrical Meters
- Separate Kitchen and Office spaces
- Air Compressor and Racks (available for purchase)



Lee & Associates San Francisco Commercial Real Estate | 242 California Street, San Francisco, CA 94111 | www.lee-associates.com

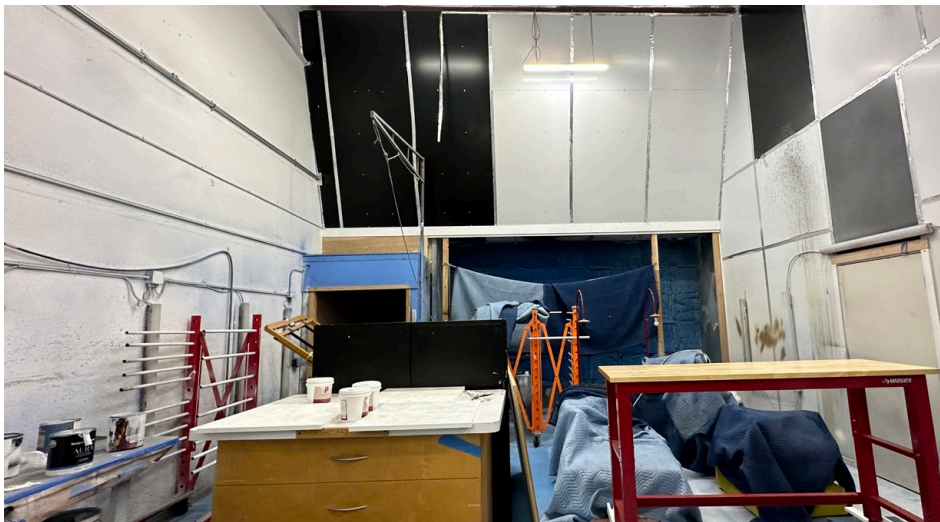
All information furnished regarding property for sale, rental or financing is from sources deemed reliable, but no warranty or representation is made to the accuracy thereof and same is submitted to errors, omissions, change of price, rental or other conditions prior to sale, lease or financing or withdrawal without notice. No liability of any kind is to be imposed on the broker herein.

2501 JENNINGS ST | SAN FRANCISCO, CA

INDUSTRIAL WAREHOUSE

Jeffrey Ida | Principal
(415) 828-7679

Doug Ogard | Associate
(415) 842-1889



Lee & Associates San Francisco Commercial Real Estate | 242 California Street, San Francisco, CA 94111 | www.lee-associates.com

All information furnished regarding property for sale, rental or financing is from sources deemed reliable, but no warranty or representation is made to the accuracy thereof and same is submitted to errors, omissions, change of price, rental or other conditions prior to sale, lease or financing or withdrawal without notice. No liability of any kind is to be imposed on the broker herein.