

3223 | **CROW CANYON RD**
SAN RAMON, CA



NEWMARK

EXCLUSIVE AGENTS

DAN WATSON 925.467.0903 // dan.watson@nmrk.com // CA RE License #01438710

JEFF MORGENSTERN 925.467.0905 // jeff.morgenstern@nmrk.com // CA RE License #01275910

// PROPERTY HIGHLIGHTS

- + Highly identifiable building with superior curb appeal
- + Walking distance to retail and less than ¼ mile from I-680 freeway
- + Recently renovated common areas and building lobby
- + Spaces available from ±1,014 to ±8,146 RSF
- + Flexible Lease Term Lengths Considered
- + Premium shared conference and training rooms with executive finishes and state-of-the-art technology—impress clients without the overhead. Available for flexible hourly or daily rental
- + Additional Building information can be found at hubsanramon.org



3223
CROW CANYON RD
SAN RAMON, CA

EXCLUSIVE AGENTS

DAN WATSON 925.467.0903 // dan.watson@nrmk.com // CA RE License #01438710

JEFF MORGENSTERN 925.467.0905 // jeff.morgenstern@nrmk.com // CA RE License #01275910

The distributor of this communication is performing acts for which a real estate license is required. The information contained herein has been obtained from sources deemed reliable but has not been verified and no guarantee, warranty or representation, either express or implied, is made with respect to such information. Terms of sale or lease and availability are subject to change or withdrawal without notice.

IRON HORSE TRAIL

3223 CROW CANYON RD
SAN RAMON, CA



TOUS&JOURS



CROW CANYON PLACE

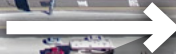
CROW CANYON ROAD



WALNUT CREEK



PLEASANTON



// OFF SITE AMENITIES

3223
CROW CANYON RD
SAN RAMON, CA

EXCLUSIVE AGENTS

DAN WATSON 925.467.0903 // dan.watson@nrmk.com // CA RE License #01438710

JEFF MORGENSTERN 925.467.0905 // jeff.morgenstern@nrmk.com // CA RE License #01275910

The distributor of this communication is performing acts for which a real estate license is required. The information contained herein has been obtained from sources deemed reliable but has not been verified and no guarantee, warranty or representation, either express or implied, is made with respect to such information. Terms of sale or lease and availability are subject to change or withdrawal without notice.

// CURRENT AVAILABILITES



3223 CROW CANYON ROAD

SUITE	SIZE	DESCRIPTION
Suite 260	1,014 RSF	Two offices, conference room, storage, entry lobby
Suite 330	1,524 RSF	Five offices, open space, balcony. Superior views and finishes
Suite 120	1,586 RSF	Two offices, open area, small kitchen. Ground floor lobby entrance
Suite 290	1,889 RSF	Three offices, conference room, open space
Suite 110	2,379 RSF	Five offices, conference room, kitchen, open area. Ground floor lobby entrance
Suite 325	3,685 RSF	Seven offices, conference room, kitchen, open space. Access to balcony
Suite 250	8,146 RSF	Divisible to 3,000 RSF. Double door entry off of elevator landing. Mostly open space with mix of offices and conference rooms with kitchen

3223
CROW CANYON RD
SAN RAMON, CA

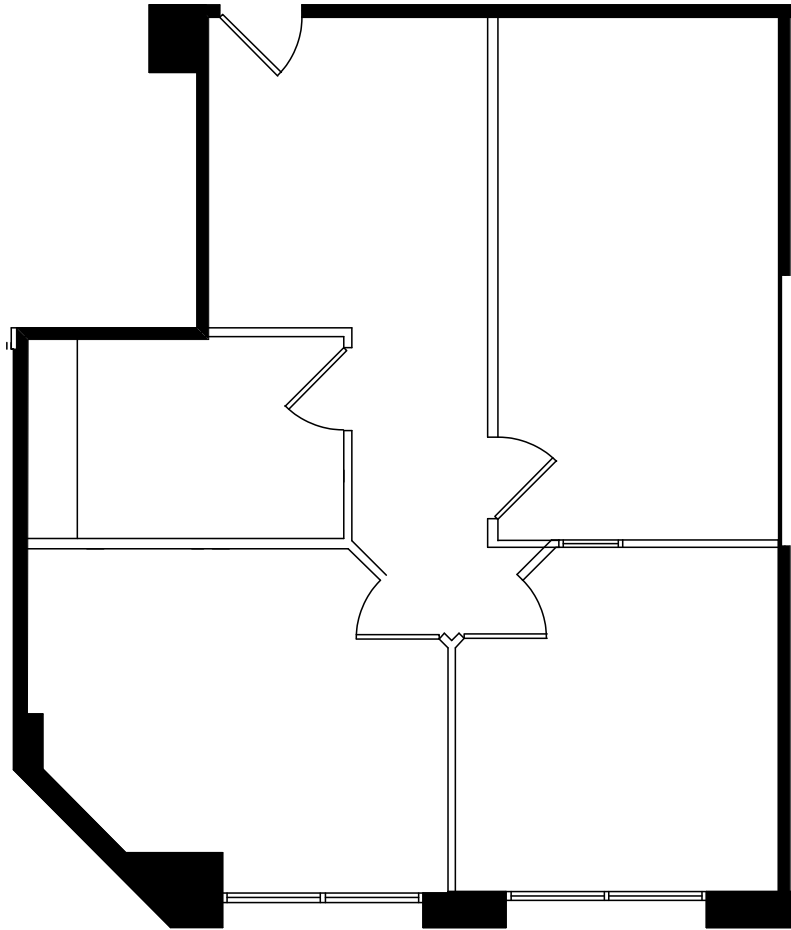
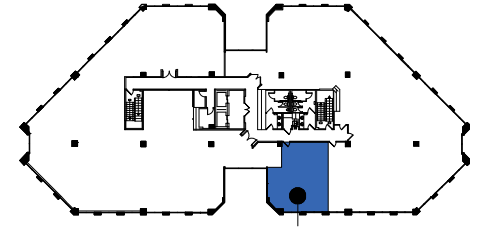
EXCLUSIVE AGENTS

DAN WATSON 925.467.0903 // dan.watson@nmrk.com // CA RE License #01438710

JEFF MORGENSTERN 925.467.0905 // jeff.morgenstern@nmrk.com // CA RE License #01275910

The distributor of this communication is performing acts for which a real estate license is required. The information contained herein has been obtained from sources deemed reliable but has not been verified and no guarantee, warranty or representation, either express or implied, is made with respect to such information. Terms of sale or lease and availability are subject to change or withdrawal without notice.

// 3223 CROW CANYON ROAD
SUITE 260 | ±1,014 RSF



*NOT TO SCALE

3223
CROW CANYON RD
SAN RAMON, CA

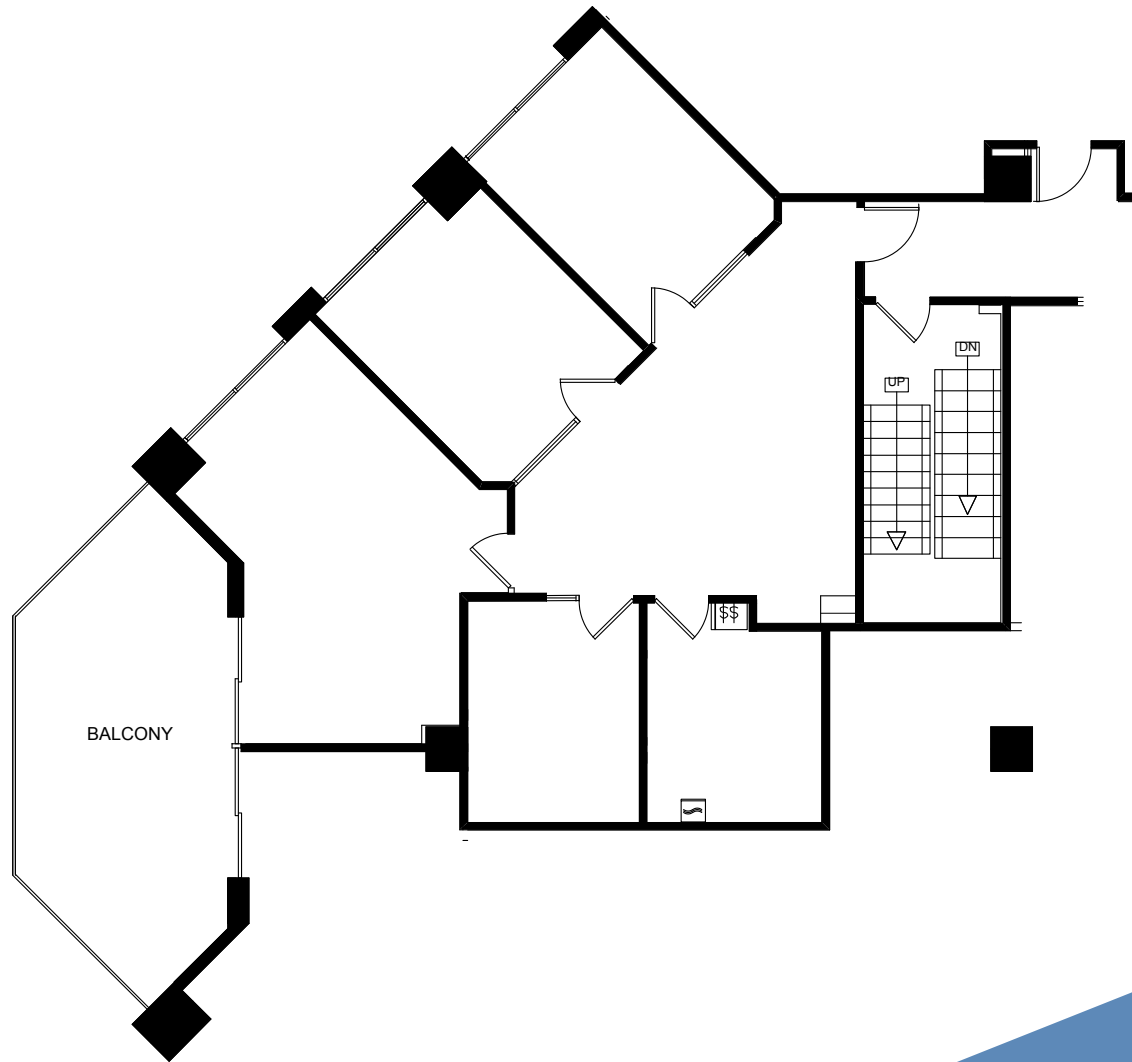
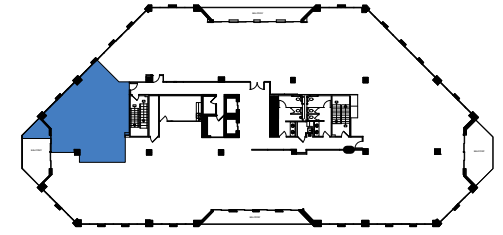
EXCLUSIVE AGENTS

DAN WATSON 925.467.0903 // dan.watson@nrmk.com // CA RE License #01438710

JEFF MORGENSTERN 925.467.0905 // jeff.morgenstern@nrmk.com // CA RE License #01275910

The distributor of this communication is performing acts for which a real estate license is required. The information contained herein has been obtained from sources deemed reliable but has not been verified and no guarantee, warranty or representation, either express or implied, is made with respect to such information. Terms of sale or lease and availability are subject to change or withdrawal without notice.

// 3223 CROW CANYON ROAD
SUITE 330 | ±1,524 RSF



*NOT TO SCALE

3223
CROW CANYON RD
SAN RAMON, CA

EXCLUSIVE AGENTS

DAN WATSON 925.467.0903 // dan.watson@nrmk.com // CA RE License #01438710

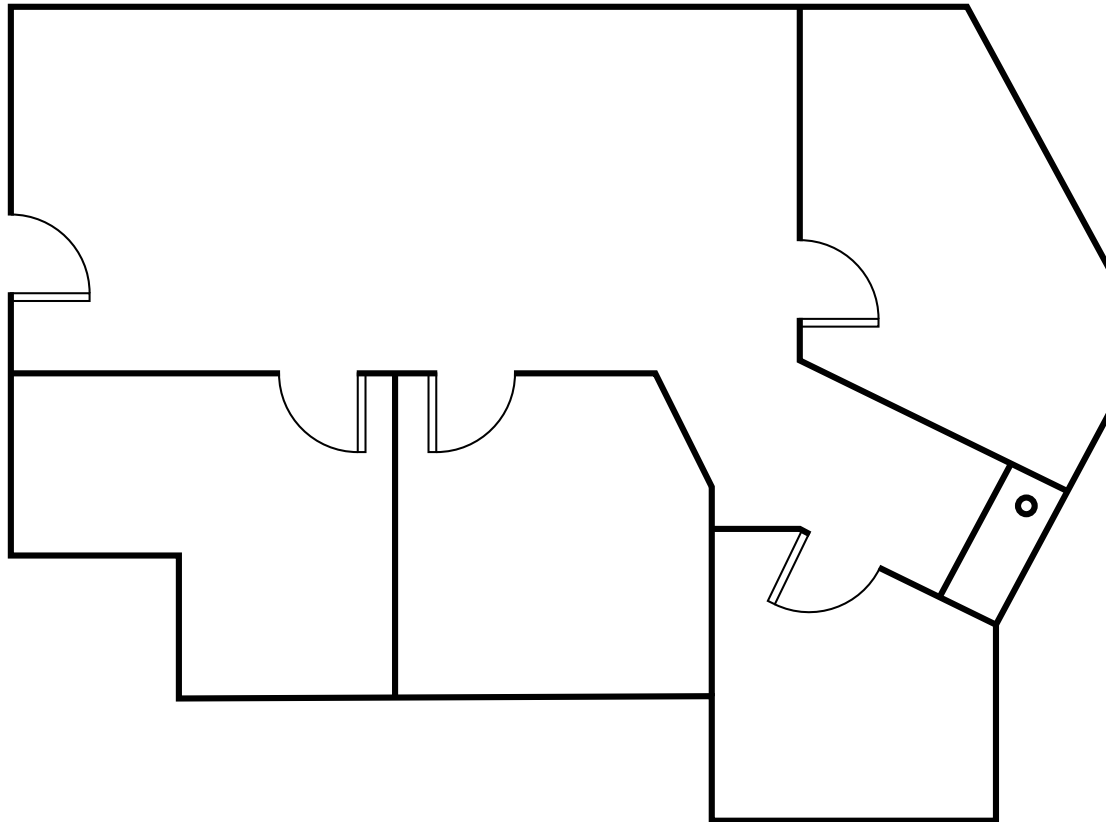
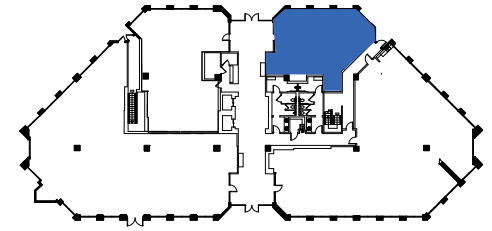
JEFF MORGENSTERN 925.467.0905 // jeff.morgenstern@nrmk.com // CA RE License #01275910

The distributor of this communication is performing acts for which a real estate license is required. The information contained herein has been obtained from sources deemed reliable but has not been verified and no guarantee, warranty or representation, either express or implied, is made with respect to such information. Terms of sale or lease and availability are subject to change or withdrawal without notice.

// 3223 CROW CANYON ROAD

SUITE 120 | ±1,586 RSF

Hypothetical plan / NOT TO SCALE



*NOT TO SCALE

3223
CROW CANYON RD
SAN RAMON, CA

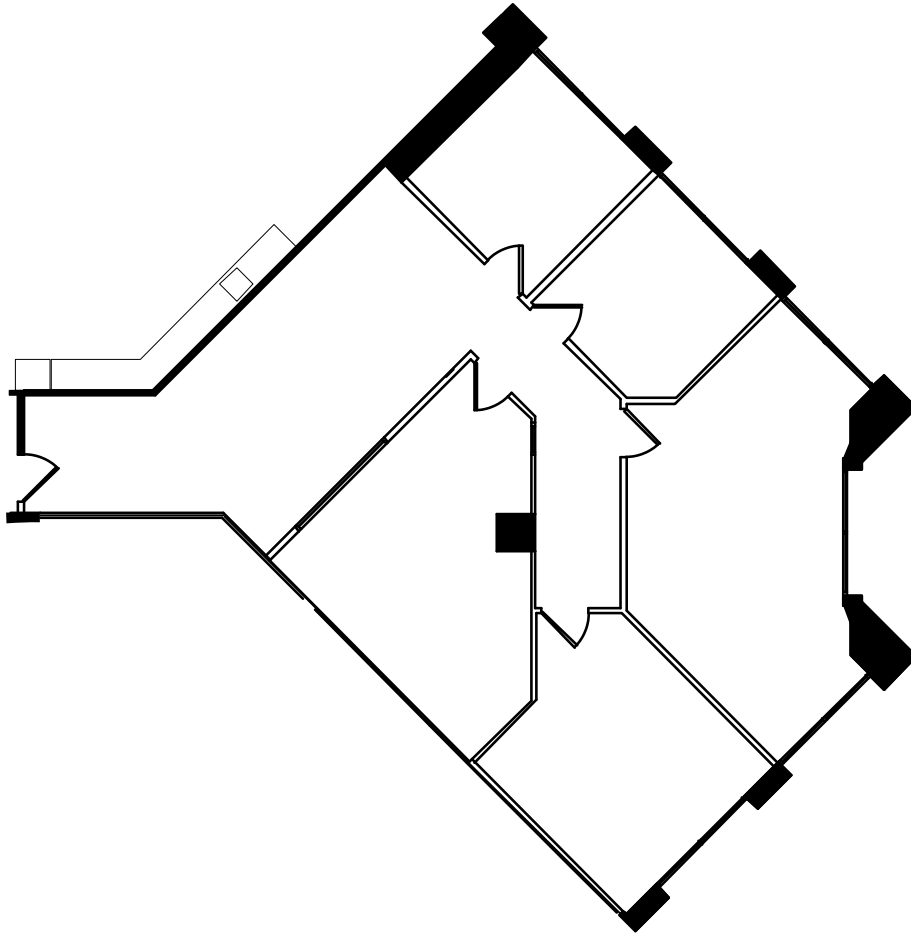
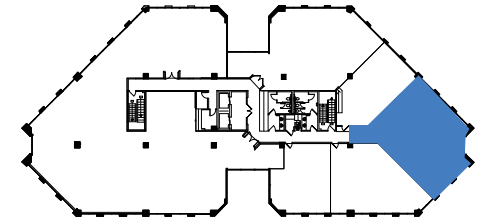
EXCLUSIVE AGENTS

DAN WATSON 925.467.0903 // dan.watson@nrmk.com // CA RE License #01438710

JEFF MORGENSTERN 925.467.0905 // jeff.morgenstern@nrmk.com // CA RE License #01275910

The distributor of this communication is performing acts for which a real estate license is required. The information contained herein has been obtained from sources deemed reliable but has not been verified and no guarantee, warranty or representation, either express or implied, is made with respect to such information. Terms of sale or lease and availability are subject to change or withdrawal without notice.

// 3223 CROW CANYON ROAD
SUITE 290 | ±1,889 RSF



*NOT TO SCALE

3223
CROW CANYON RD
SAN RAMON, CA

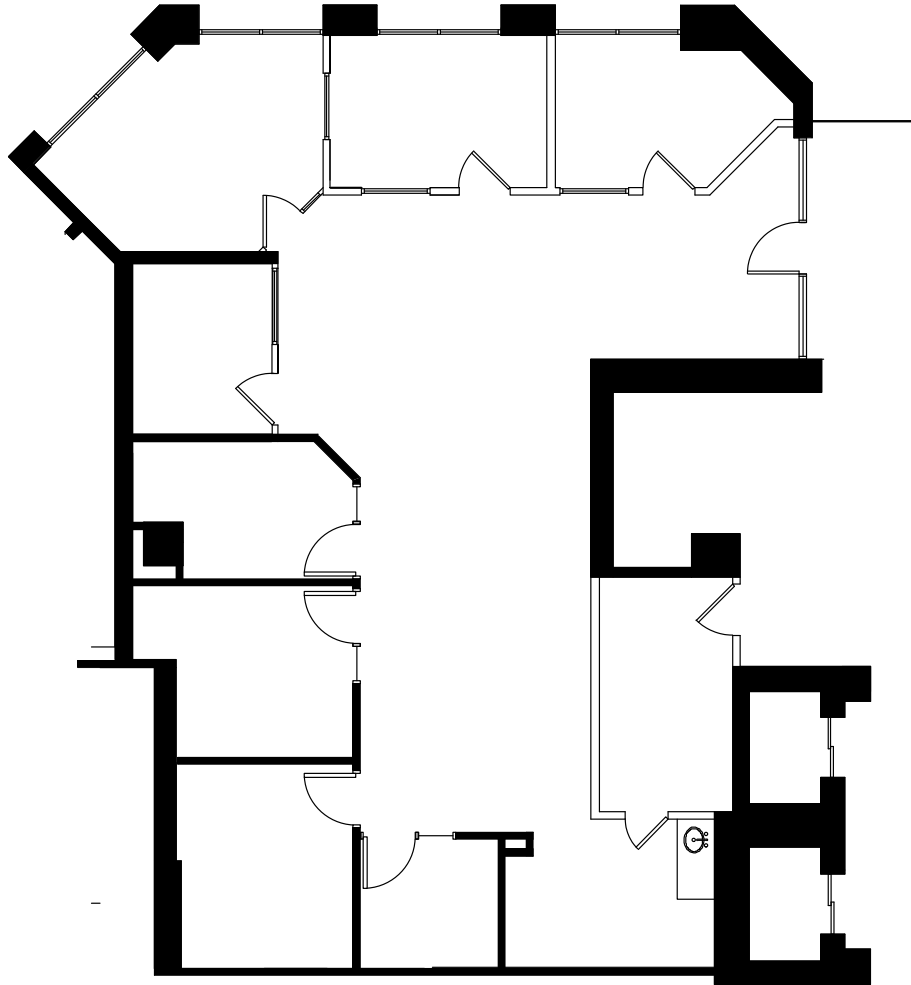
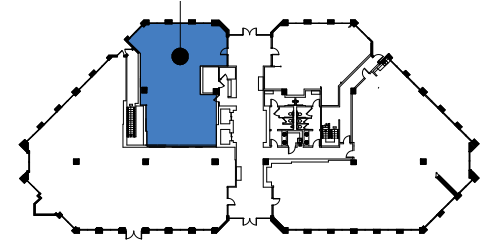
EXCLUSIVE AGENTS

DAN WATSON 925.467.0903 // dan.watson@nrmk.com // CA RE License #01438710

JEFF MORGENSTERN 925.467.0905 // jeff.morgenstern@nrmk.com // CA RE License #01275910

The distributor of this communication is performing acts for which a real estate license is required. The information contained herein has been obtained from sources deemed reliable but has not been verified and no guarantee, warranty or representation, either express or implied, is made with respect to such information. Terms of sale or lease and availability are subject to change or withdrawal without notice.

// 3223 CROW CANYON ROAD
SUITE 110 | ±2,379 RSF



*NOT TO SCALE

3223
CROW CANYON RD
SAN RAMON, CA

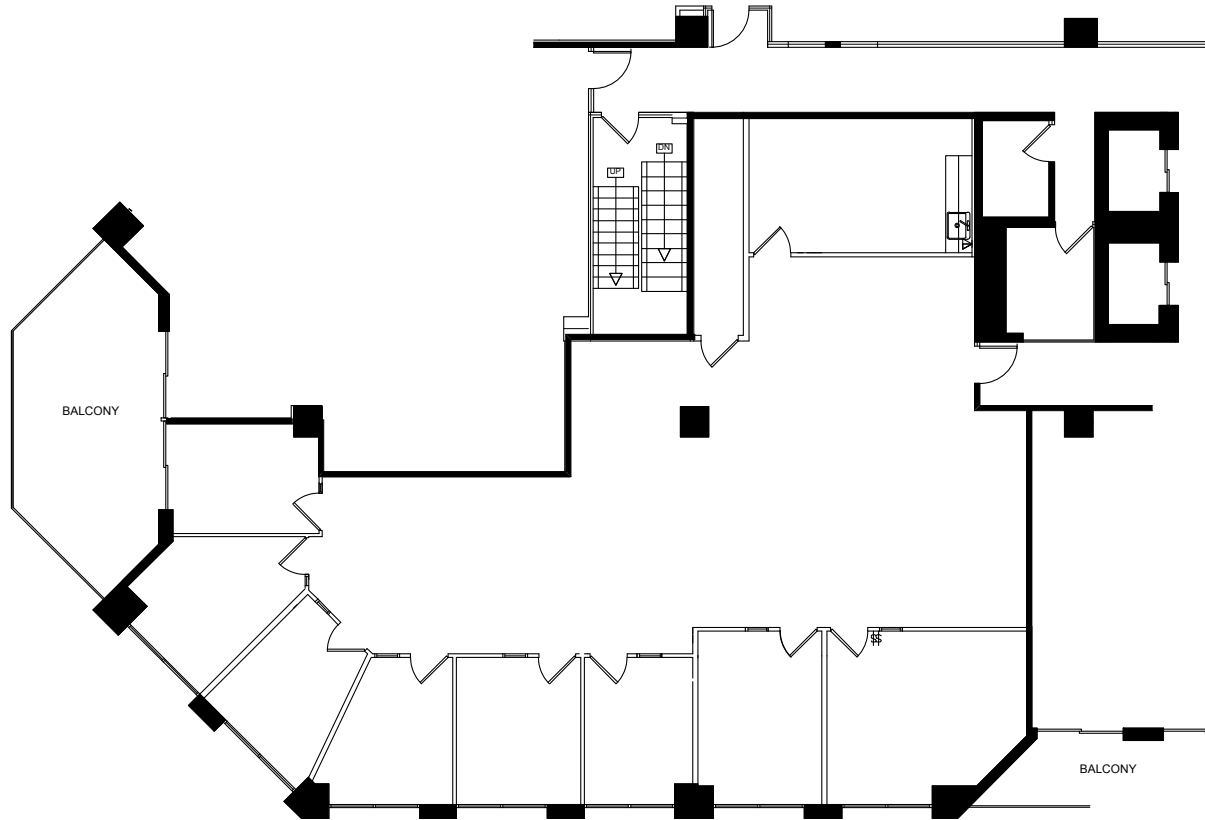
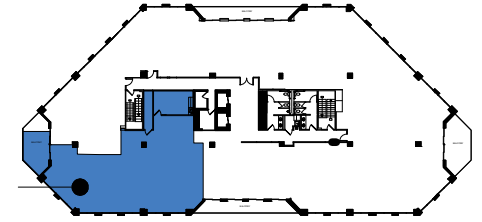
EXCLUSIVE AGENTS

DAN WATSON 925.467.0903 // dan.watson@nrmk.com // CA RE License #01438710

JEFF MORGENSTERN 925.467.0905 // jeff.morgenstern@nrmk.com // CA RE License #01275910

The distributor of this communication is performing acts for which a real estate license is required. The information contained herein has been obtained from sources deemed reliable but has not been verified and no guarantee, warranty or representation, either express or implied, is made with respect to such information. Terms of sale or lease and availability are subject to change or withdrawal without notice.

// 3223 CROW CANYON ROAD
SUITE 325 | ±3,685 RSF



*NOT TO SCALE

3223
CROW CANYON RD
SAN RAMON, CA

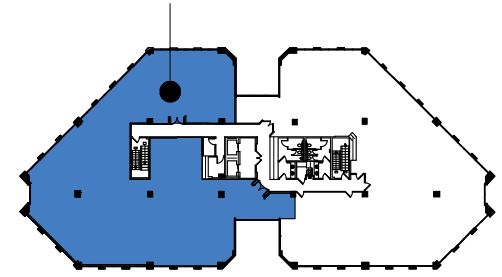
EXCLUSIVE AGENTS

DAN WATSON 925.467.0903 // dan.watson@nrmk.com // CA RE License #01438710

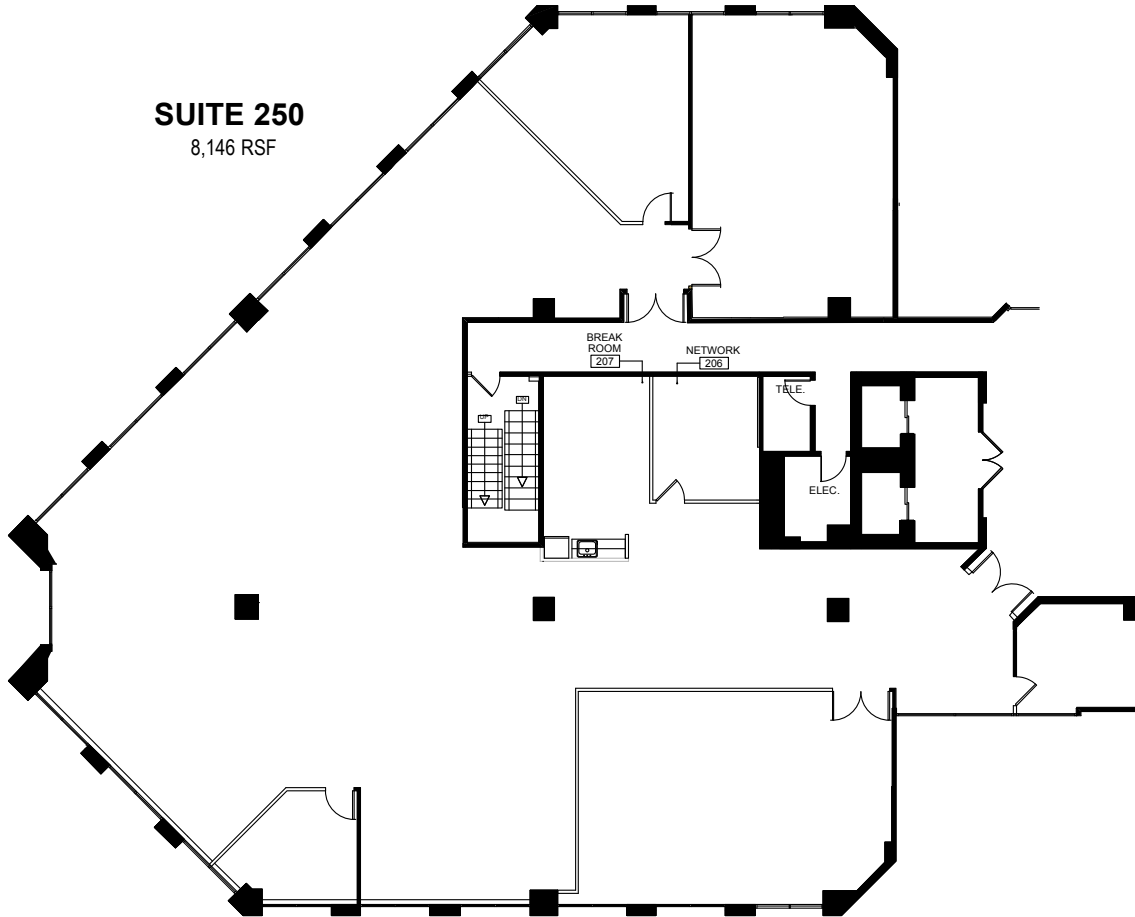
JEFF MORGENSTERN 925.467.0905 // jeff.morgenstern@nrmk.com // CA RE License #01275910

The distributor of this communication is performing acts for which a real estate license is required. The information contained herein has been obtained from sources deemed reliable but has not been verified and no guarantee, warranty or representation, either express or implied, is made with respect to such information. Terms of sale or lease and availability are subject to change or withdrawal without notice.

// 3223 CROW CANYON ROAD
SUITE 250 | ±8,146 RSF



SUITE 250
8,146 RSF



*NOT TO SCALE

3223
CROW CANYON RD
SAN RAMON, CA

EXCLUSIVE AGENTS

DAN WATSON 925.467.0903 // dan.watson@nrmk.com // CA RE License #01438710

JEFF MORGENSTERN 925.467.0905 // jeff.morgenstern@nrmk.com // CA RE License #01275910

The distributor of this communication is performing acts for which a real estate license is required. The information contained herein has been obtained from sources deemed reliable but has not been verified and no guarantee, warranty or representation, either express or implied, is made with respect to such information. Terms of sale or lease and availability are subject to change or withdrawal without notice.

3223 | **CROW CANYON RD**
SAN RAMON, CA



EXCLUSIVE AGENTS

DAN WATSON 925.467.0903 // dan.watson@nrmk.com // CA RE License #01438710

JEFF MORGENSTERN 925.467.0905 // jeff.morgenstern@nrmk.com // CA RE License #01275910

NEWMARK

The distributor of this communication is performing acts for which a real estate license is required. The information contained herein has been obtained from sources deemed reliable but has not been verified and no guarantee, warranty or representation, either express or implied, is made with respect to such information. Terms of sale or lease and availability are subject to change or withdrawal without notice.