

Ultra-rare medical co-op sale opportunity in the prestigious 20 Plaza St E known for its landmark architecture!



20 Plaza East #A15, Ground Floor

ASKING PRICE: \$1,450,000 | Maintenance \$3,930

SEE MORE ON CORCORAN.COM: WEB# 22421469

Ultra-rare medical co-op sale opportunity in the prestigious 20 Plaza St E known for its landmark architecture!

This location cannot be matched! Offered for sale is unit #A15 currently configured as a medical space perfect for any medical group or solo practice. Boasting 2050SF of square footage complete with HVAC, waiting area, reception, full kitchenette, storage/closets, and multiple treatment and consult rooms. The office is configured with 6 treatment & 3 consult rooms with plumbing and can easily be expanded to 8 treatment rooms. "As Is" the space is Exceptional and Move in ready and well suited for Hi Design Medical Practice.

Being the corner unit enjoy an abundance of natural light and your own private entrance. The space is adaptable to any medical specialty such as Primary Care Physician, Dentist, Physical Therapy, Chiropractor, Therapist/Counselor, Dermatology, Optometrist, Podiatrist, and Pediatrician.

This stunning maisonette has entrances both in the front, nestled within the professionally landscaped garden, or through the elegant, attended Art Deco lobby. Be across from Grand Army Plaza and historic Prospect Park, and an easy walk to Brooklyn's cultural heart: The Museum, Botanic Garden and Library. The 2/3 and B/Q trains are about three stops into Downtown Brooklyn and Manhattan. A heartbeat away from the neighborhood's amazing cafes, shops, and restaurants. This combination of space, quality, location, and value allows for a unique opportunity that should not be missed.

The Forray Team at The Corcoran Group

CHRIS CAVORTI | EVAN F. CHURCH | MARVIN CHU | DONALD LAI

CHRIS CAVORTI
Lic. Associate RE Broker
(m) 914.804.7091
ccavorti@corcoran.com

DONALD LAI
Lic. Associate RE Broker
(m) 917.947.9917
dlai@corcoran.com

TRACY MCLEAN
Lic. Associate RE Broker
(m) 917.693.8135
tmm@corcoran.com

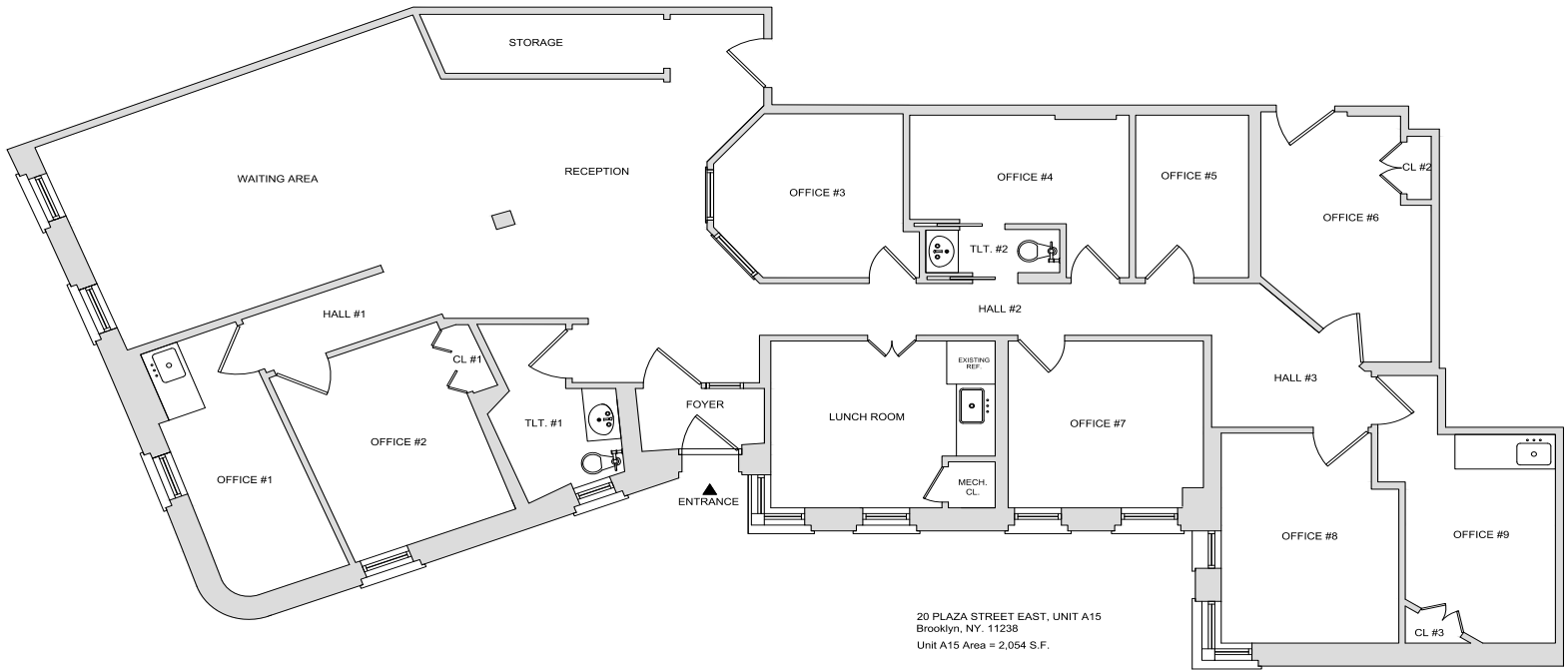
More Photos – Virtual Staged



More Photos

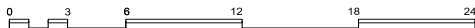


Building Exterior & Floorplan



20 PLAZA STREET EAST, UNIT A15
 Brooklyn, NY 11238
 Unit A15 Area = 2,054 S.F.

EXISTING CONDITIONS
 SCALE



THIS DRAWING IS AN INSTRUMENT OF PROFESSIONAL SERVICE AND SHALL REMAIN THE PROPERTY OF ZIRINSKY ARCHITECTURE, P.C. WHETHER THE PROJECT FOR WHICH IT IS PREPARED IS EXECUTED OR NOT. NO CHANGES, ALTERATIONS, ADDITIONS, OR DELETIONS MAY BE MADE EXCEPT BY ZIRINSKY ARCHITECTURE, P.C. THIS DRAWING SHALL NOT BE REPRODUCED BY ANYONE ON OTHER PROJECTS, FOR ADDITIONS TO THIS PROJECT, OR FOR COMPLETION OF THIS PROJECT BY OTHERS WITHOUT WRITTEN CONSENT.

Zirinsky Architecture, P.C.
 www.zirinskyarch.com steve@zirinskyarch.com

44-02 11th Street, Long Island City, NY 11101 t: (718) 706-0616 f: (718) 706-0619

EXISTING FLOOR PLAN

DOB sign	label	seed & signature	date	scale	drawn by	job no.
			04/05/23	AS NOTED	EGM	2334
	revision		EXISTING CONDITIONS			A-001.00
			20 PLAZA STREET EAST, UNIT A15			1 OF 1
			BROOKLYN, NY 11238			