

# 6,444 SF GREEN HILLS OFFICE SPACE

*for lease*

On the Corner of Bedford Avenue & Abbott Martin Road



*for more information, contact*

**GREG BARRO**

615.828.5115

[gbarro@southeastventure.com](mailto:gbarro@southeastventure.com)

**AXSON WEST**

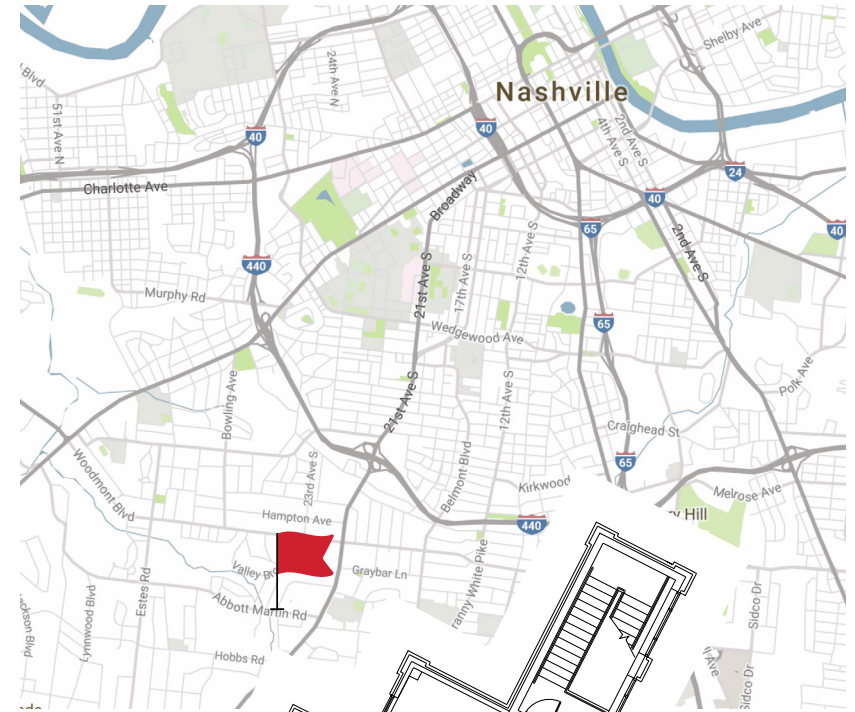
615.250.8670

[awest@southeastventure.com](mailto:awest@southeastventure.com)

 **SOUTHEAST VENTURE**  
615.833.8716 / [southeastventure.com](http://southeastventure.com)

**ADDRESS** 2216 Abbott Martin Road, Nashville, TN 37215  
**SIZE** 6,444 SF – Can be subdivided down 2,500 SF  
**PRICE** \$42/SF FSG  
**AVAILABLE** Immediately

- 12 Executive offices, large open office area, and large private restrooms
- Features include white-marble floors in the lobby and hallway, glass-panelled mahogany doors, and a multitude of windows that provide great views and abundant natural light

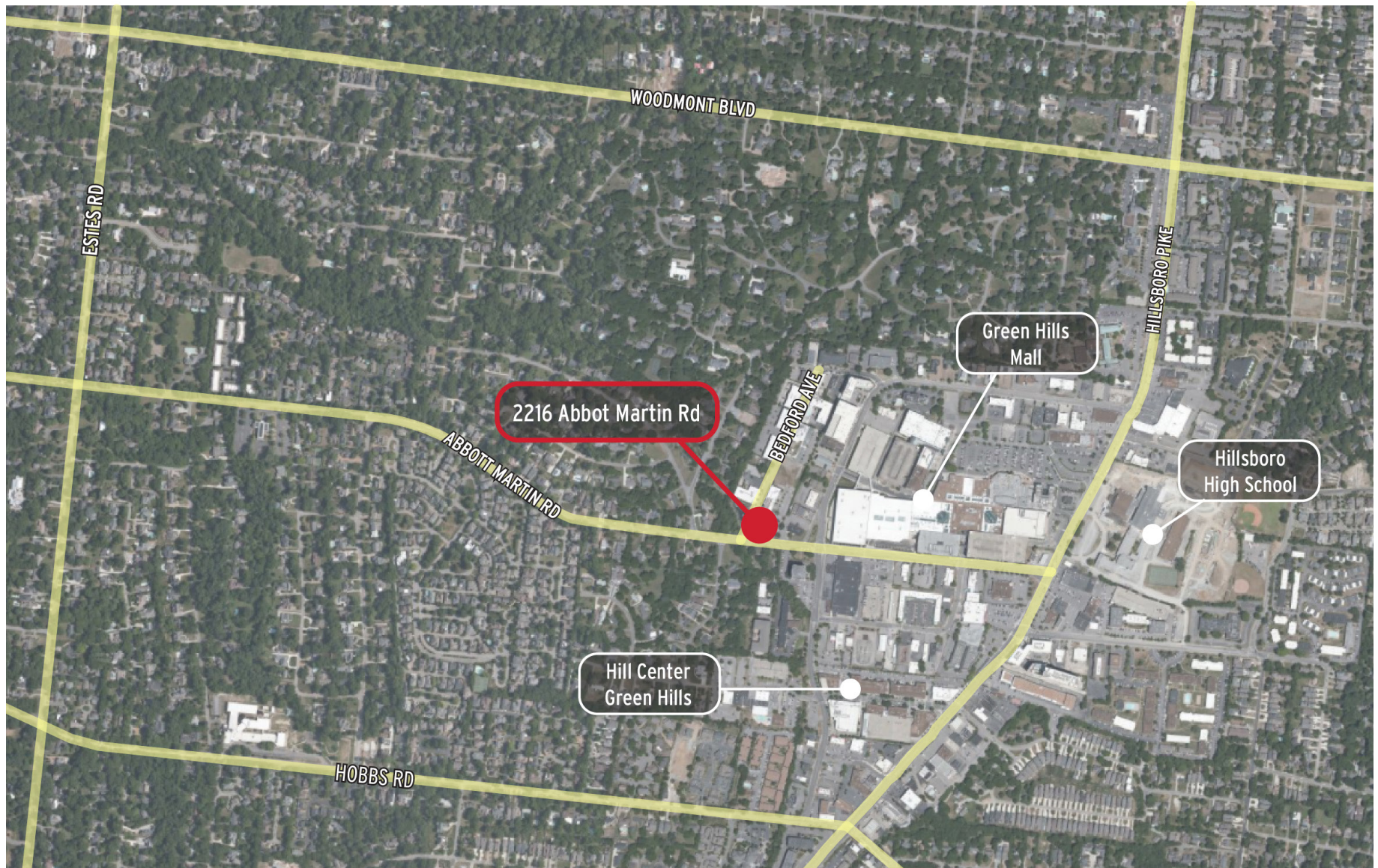


#### LOCATION HIGHLIGHTS

- Located on the corner of Abbott Martin Rd. and Bedford Ave. on the western edge of the Green Hills commercial district, avoiding traffic congestion
- Easy access to and from Belle Meade
- Walking distance to the Mall at Green Hills, Whole Foods, YMCA, and many other restaurants and retailers

*for more information, contact*

ACCESS & POINTS OF INTEREST



*for more information, contact*

**ADDITIONAL PHOTOS**



*for more information, contact*

**GREG BARRO**

615.828.5115

[gbarro@southeastventure.com](mailto:gbarro@southeastventure.com)

**AXSON WEST**

615.250.8670

[awest@southeastventure.com](mailto:awest@southeastventure.com)