

# TURN-KEY MEDICAL OFFICE SPACE



4310 Roswell Road | Atlanta, GA 30342

## FOR LEASE HIGH-END MEDICAL SUITES

SPACE AVAILABLE | 4,835-6,656 SF

LEASING RATE | Negotiable

### HIGHLIGHTS

- Premier medical space
- 4,835 SF of clinic space
- Partially completed ambulatory surgical center (1,821 SF)
- High-end interior finishes - no expense spared
- High-visibility electronic sign on Roswell Road
- Outstanding accessibility
- 30 parking spaces & valet parking

LARRY JAREMA | 770.913.3954 | [ljarema@ackermanco.net](mailto:ljarema@ackermanco.net)

©2025 Ackerman & Co. All rights reserved. While we have no reason to doubt the accuracy of the information provided from sources we deem reliable, we cannot guarantee it and therefore assume no liability for errors, omissions or changes to this content.

Ackerman & Co.

[www.ackermanco.com](http://www.ackermanco.com)



AERIAL VIEW



LARRY JAREMA | 770.913.3954 | ljarema@ackermanco.net

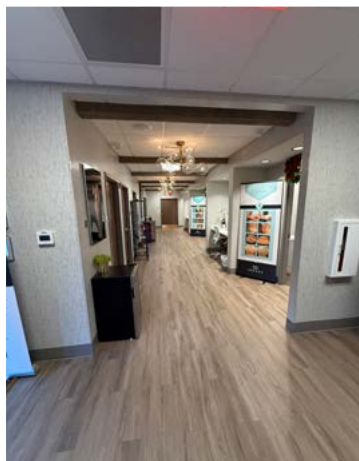
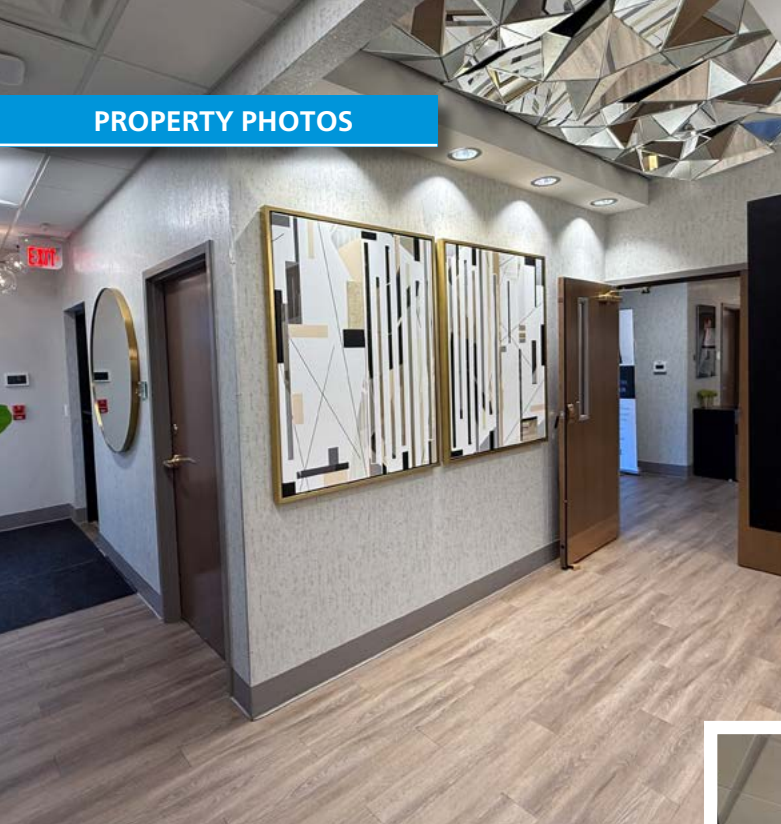
Ackerman & Co.  
www.ackermanco.com

©2025 Ackerman & Co. All rights reserved. While we have no reason to doubt the accuracy of the information provided from sources we deem reliable, we cannot guarantee it and therefore assume no liability for errors, omissions or changes to this content.





## PROPERTY PHOTOS



LARRY JAREMA | 770.913.3954 | [ljarema@ackermanco.net](mailto:ljarema@ackermanco.net)

©2025 Ackerman & Co. All rights reserved. While we have no reason to doubt the accuracy of the information provided from sources we deem reliable, we cannot guarantee it and therefore assume no liability for errors, omissions or changes to this content.

Ackerman & Co.  
[www.ackermanco.com](http://www.ackermanco.com)