

For Sale

Price Upon Request



1119 Juarez Ave, Laredo, TX 78040

11,870 SF / 0.2725 Acres Land For Sale | Price Upon Request

NAI Swisher & Martin Realty
COMMERCIAL REAL ESTATE SERVICES, WORLDWIDE

No warranty or representation, express or implied, is made as to the accuracy of the information contained herein, and the same is submitted subject to errors, omissions, change of price, rental or other conditions, prior sale, lease or financing, or withdrawal without notice, and of any special listing conditions imposed by our principals no warranties or representations are made as to the condition of the property or any hazards contained therein are any to be implied.

9114 McPherson Rd., Ste 2518, Laredo, TX 78045
956.725.3800 | NAIswisherandmartinrealty.com

1119 Juarez Ave.
Contact Info

NAI Swisher & Martin Realty
COMMERCIAL REAL ESTATE SERVICES, WORLDWIDE



NAI Swisher & Martin Realty
COMMERCIAL REAL ESTATE SERVICES, WORLDWIDE

9114 McPherson Rd., Ste 2518
Laredo, TX 78045
956.725.3800 | joeyferguson.com

Listed by

Joey Ferguson, Senior Associate

tel +1 956.725.3800

cell +1 956.324.5639

joeyferguson@outlook.com

[linkedin.com/in/joey-ferguson/](https://www.linkedin.com/in/joey-ferguson/)

joeyferguson.com



No warranty or representation, express or implied, is made as to the accuracy of the information contained herein, and the same is submitted subject to errors, omissions, change of price, rental or other conditions, prior sale, lease or financing, or withdrawal without notice, and of any special listing conditions imposed by our principals no warranties or representations are made as to the condition of the property or any hazards contained therein are any to be implied.

9114 McPherson Rd., Ste 2518, Laredo, TX 78045
956.725.3800 | swisherandmartinrealty.com

1119 Juarez Ave. Property Details

Property Features

Introducing an incredible opportunity in Laredo! 1119 Juarez Ave presents a prime commercial land investment in a sought-after area. With a lot size of 11,871 square feet and zoning suitable for various commercial uses, this property is ideal for savvy investors looking to capitalize on a bustling market. The level topography and city street frontage further enhance the appeal of this property. Don't miss out on the chance to make your mark in this dynamic location with endless potential. Whether you're looking to develop, build, or hold for future gains, this property offers a strategic investment opportunity. Act fast as opportunities like this are rare!

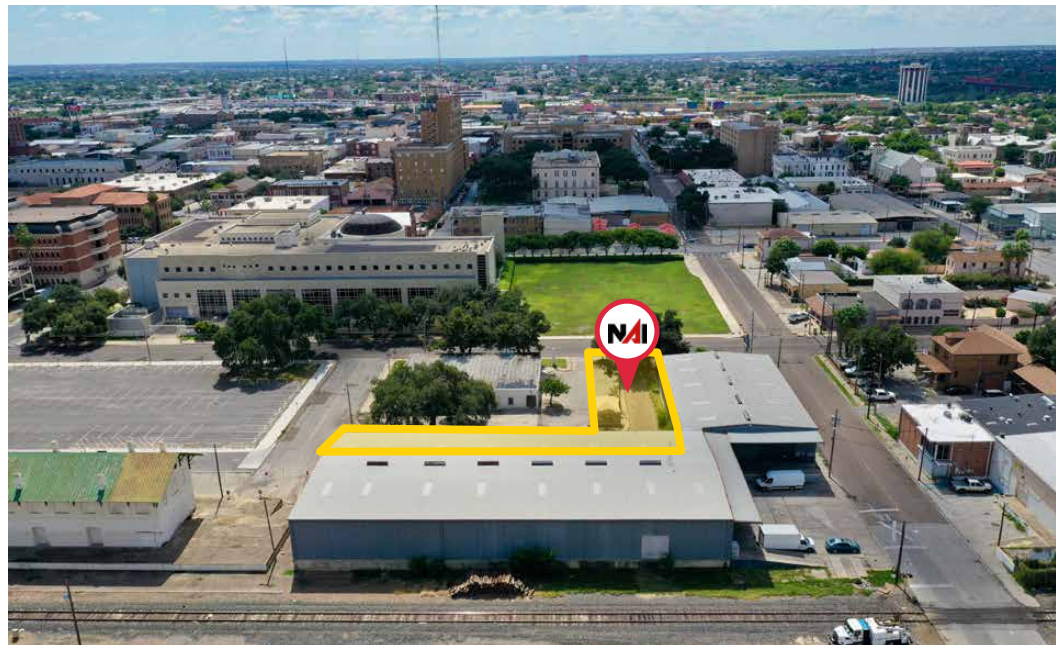


Property Facts

Address:	1119 Juarez Ave, Laredo TX 78040
Price:	Upon Request
Built:	1994
Lot Size (SF):	11,870 SF
Lot Size (Acres):	0.2725 Acres

1119 Juarez Ave.
Property Photos

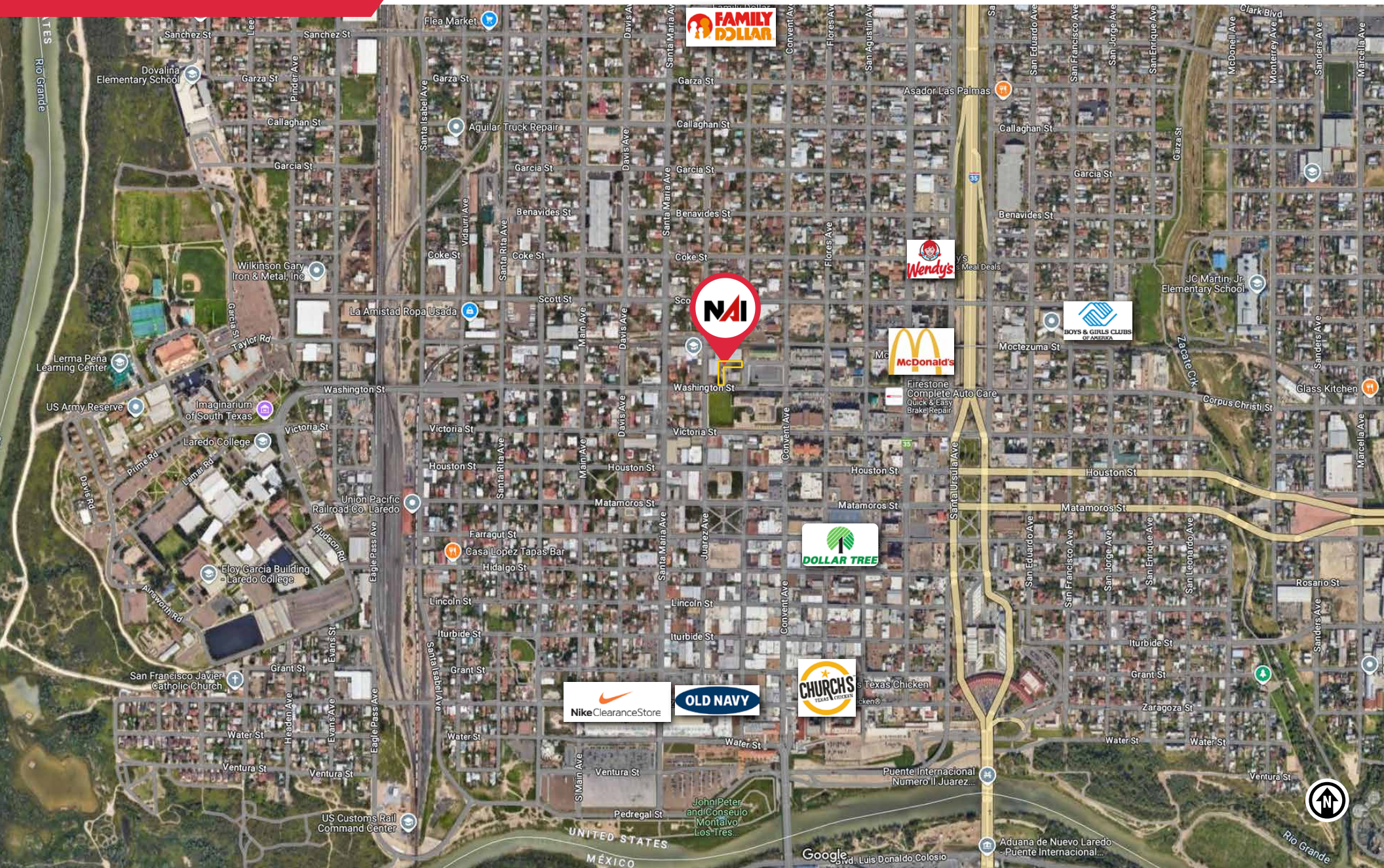
NAI Swisher & Martin Realty
COMMERCIAL REAL ESTATE SERVICES, WORLDWIDE



No warranty or representation, express or implied, is made as to the accuracy of the information contained herein, and the same is submitted subject to errors, omissions, change of price, rental or other conditions, prior sale, lease or financing, or withdrawal without notice, and of any special listing conditions imposed by our principals no warranties or representations are made as to the condition of the property or any hazards contained therein are any to be implied.

9114 McPherson Rd., Ste 2518, Laredo, TX 78045
956.725.3800 | swisherandmartinrealty.com

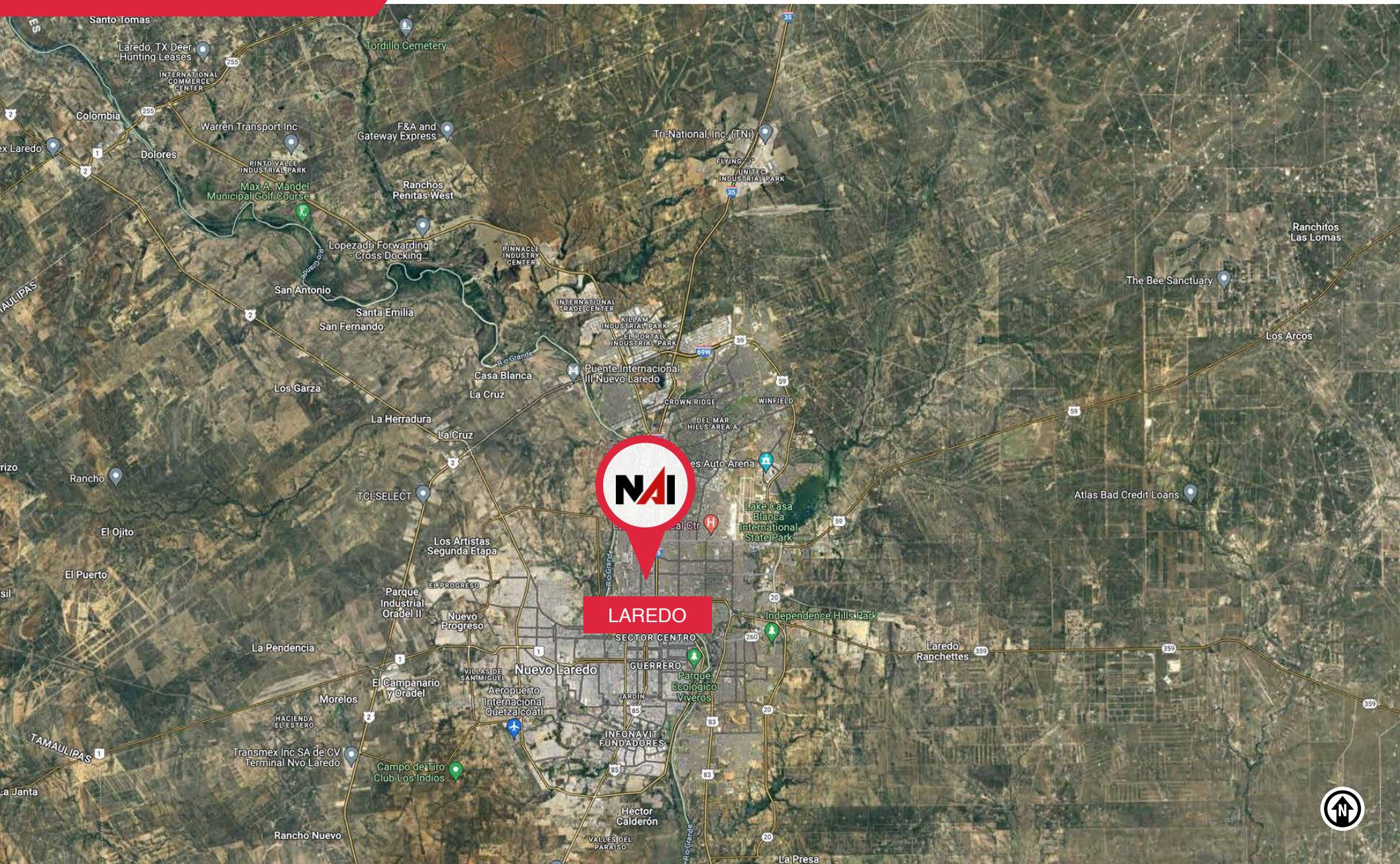
1119 Juarez Ave. Location Map



No warranty or representation, express or implied, is made as to the accuracy of the information contained herein, and the same is submitted subject to errors, omissions, change of price, rental or other conditions, prior sale, lease or financing, or withdrawal without notice, and of any special listing conditions imposed by our principals no warranties or representations are made as to the condition of the property or any hazards contained therein are any to be implied.

9114 McPherson Rd., Ste 2518, Laredo, TX 78045
956.725.3800 | swisherandmartinrealty.com

Regional Map



No warranty or representation, express or implied, is made as to the accuracy of the information contained herein, and the same is submitted subject to errors, omissions, change of price, rental or other conditions, prior sale, lease or financing, or withdrawal without notice, and of any special listing conditions imposed by our principals no warranties or representations are made as to the condition of the property or any hazards contained therein are any to be implied.

9114 McPherson Rd., Ste 2518, Laredo, TX 78045
956.725.3800 | swisherandmartinrealty.com

Laredo, Texas

Laredo, Texas, stands as a beacon of economic vitality and opportunity in the heart of South Texas. With its strategic location along the US-Mexico border, Laredo has long been a hub of international trade and commerce. The city's economy thrives on its robust trade relationships, bolstered by its status as the largest inland port in the United States. As a result, Laredo enjoys a diverse and dynamic marketplace, attracting businesses and investors from across the globe.

The real estate sector in Laredo reflects this buoyant economy, with steady growth and demand across residential, commercial, and industrial properties. The city's favorable business climate, coupled with its proximity to major transportation routes, makes it an attractive destination for both local entrepreneurs and multinational corporations looking to establish or expand their operations. As a result, property values have appreciated steadily, presenting lucrative opportunities for investors and homeowners alike.

Laredo's retail landscape is equally vibrant, with a thriving mix of local boutiques, national chains, and specialty stores catering to diverse consumer preferences. The city's multicultural heritage adds to the richness of its retail offerings, with a wide array of authentic Mexican goods and cuisine contributing to the unique shopping experience. Additionally, Laredo benefits from a steady stream of cross-border shoppers from Mexico, further stimulating its retail sector and bolstering its reputation as a shopping destination.

Furthermore, Laredo's robust job market and low unemployment rate underscore its resilience and economic strength. The city's diverse economy, which encompasses sectors such as logistics, healthcare, education, and manufacturing, provides ample employment opportunities for residents and newcomers alike. With a skilled workforce and a supportive business environment, Laredo continues to attract talent and investment, positioning itself for sustained growth and prosperity in the years to come.

