

Medical Office Space for Lease



CONTACT

Todd Sternfeld C: 509 539 3998 / todd@naitcc.com
Corren Heeren C: 509 302 9976 / corren@naitcc.com

Nait Tri-Cities

We obtained the information above from sources we believe to be reliable. However, we have not verified its accuracy and make no guarantee, warranty or representation about it. It is submitted subject to the possibility of errors, omissions, change of price, rental or other conditions, prior sale, lease or financing, or withdrawal without notice. We include projections, opinions, assumptions or estimates for example only, and they may not represent current or future performance of the property. You and your tax and legal advisors should conduct your own investigation of the property and transaction.



Property Summary



6802 Rio Grande Ave, Ste B

Kennewick, WA 99336

Property Overview

Leasing opportunity in a prime business location in the heart of Kennewick! Vista Fields is a mixed-use development consisting of professional offices, retail, and residential.

Open concept office with conference room, full bath, shower and ample parking! Two suites (totaling $\pm 4,370$ SF) available and able to be leased together or separately.

Property Highlights

- Situated between medical office and professional office space
- 2nd Floor Unit with Stairs - Not ADA Accessible
- Can be leased alone or together with 2nd larger suite for more space
- Includes conference room, full bath and shower
- Wired for Fiber Optics - IT room ready
- APN 132991030000012
- $\pm 1,070$ SF Available | \$18 PSF
- MLS 271372
- $\pm 25K$ VPD

CONTACT

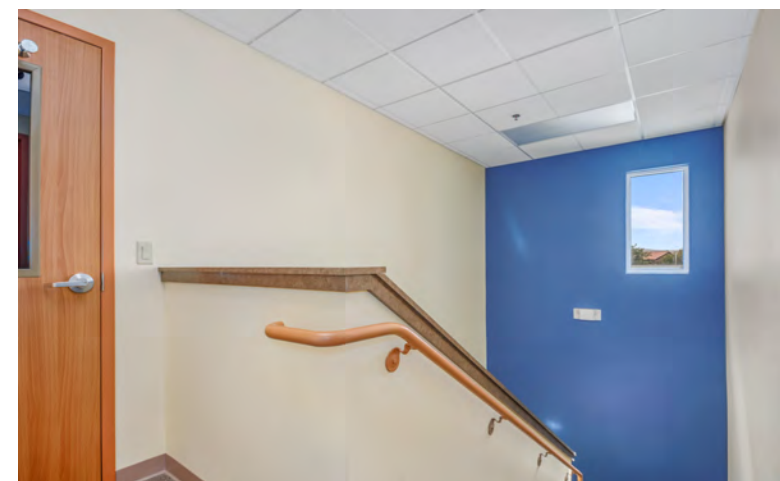
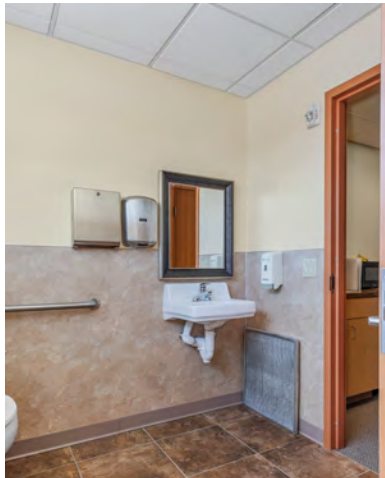
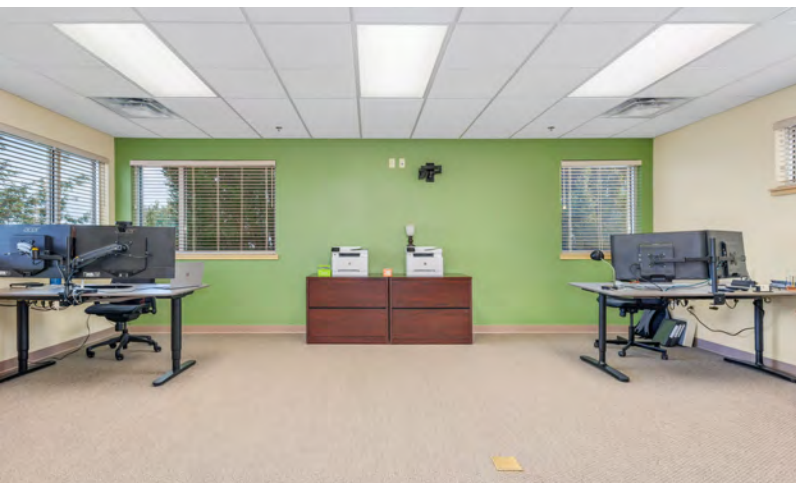
Todd Sternfeld C: 509 539 3998 / todd@naitcc.com
Corren Heeren C: 509 302 9976 / corren@naitcc.com

Nait Tri-Cities

We obtained the information above from sources we believe to be reliable. However, we have not verified its accuracy and make no guarantee, warranty or representation about it. It is submitted subject to the possibility of errors, omissions, change of price, rental or other conditions, prior sale, lease or financing, or withdrawal without notice. We include projections, opinions, assumptions or estimates for example only, and they may not represent current or future performance of the property. You and your tax and legal advisors should conduct your own investigation of the property and transaction.



Additional Photos



CONTACT

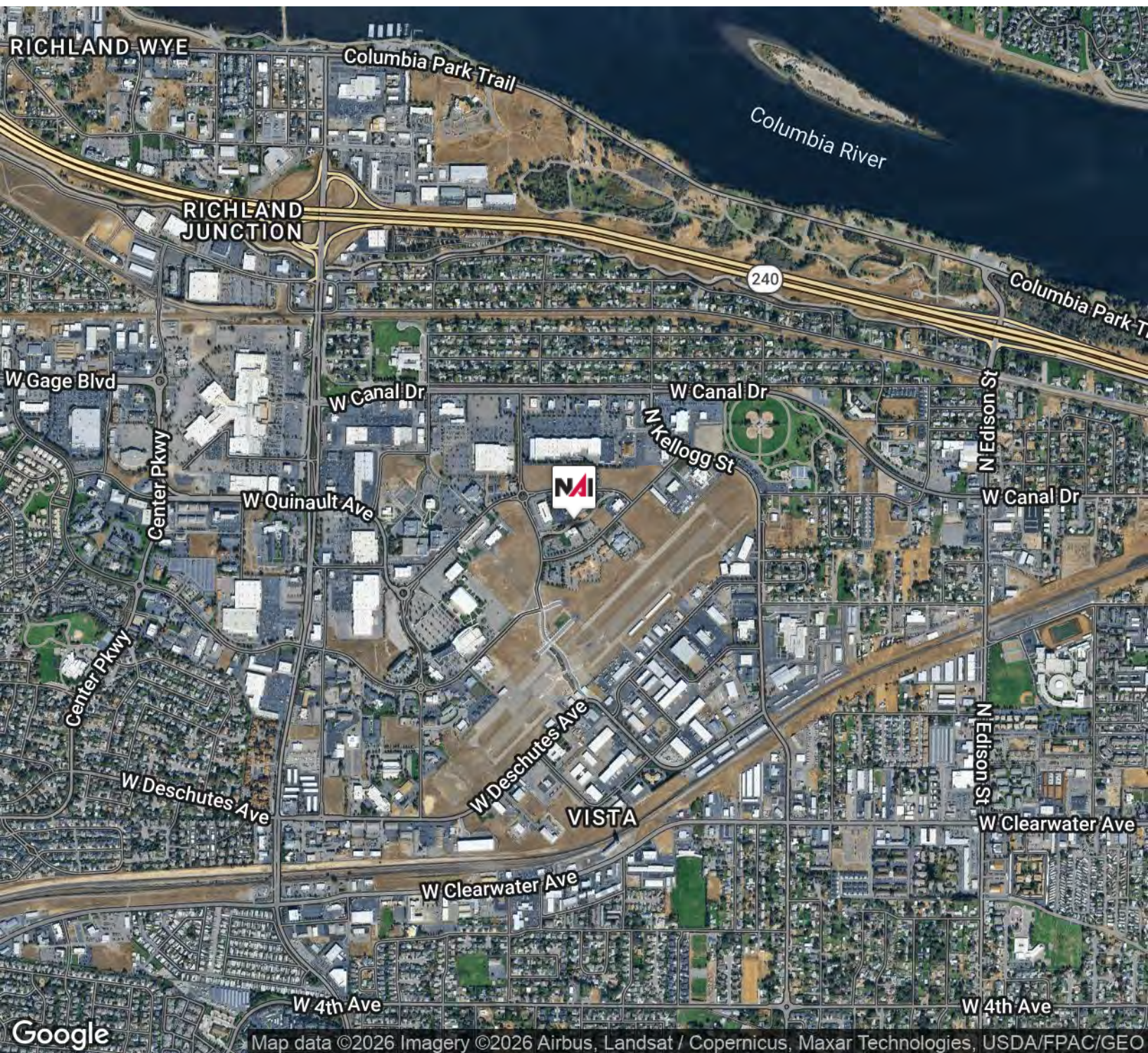
Todd Sternfeld C: 509 539 3998 / todd@naitcc.com
Corren Heeren C: 509 302 9976 / corren@naitcc.com

NAITri-Cities

We obtained the information above from sources we believe to be reliable. However, we have not verified its accuracy and make no guarantee, warranty or representation about it. It is submitted subject to the possibility of errors, omissions, change of price, rental or other conditions, prior sale, lease or financing, or withdrawal without notice. We include projections, opinions, assumptions or estimates for example only, and they may not represent current or future performance of the property. You and your tax and legal advisors should conduct your own investigation of the property and transaction.



Location Map



CONTACT

Todd Sternfeld C: 509 539 3998 / todd@naitcc.com
Corren Heeren C: 509 302 9976 / corren@naitcc.com

NAI Tri-Cities

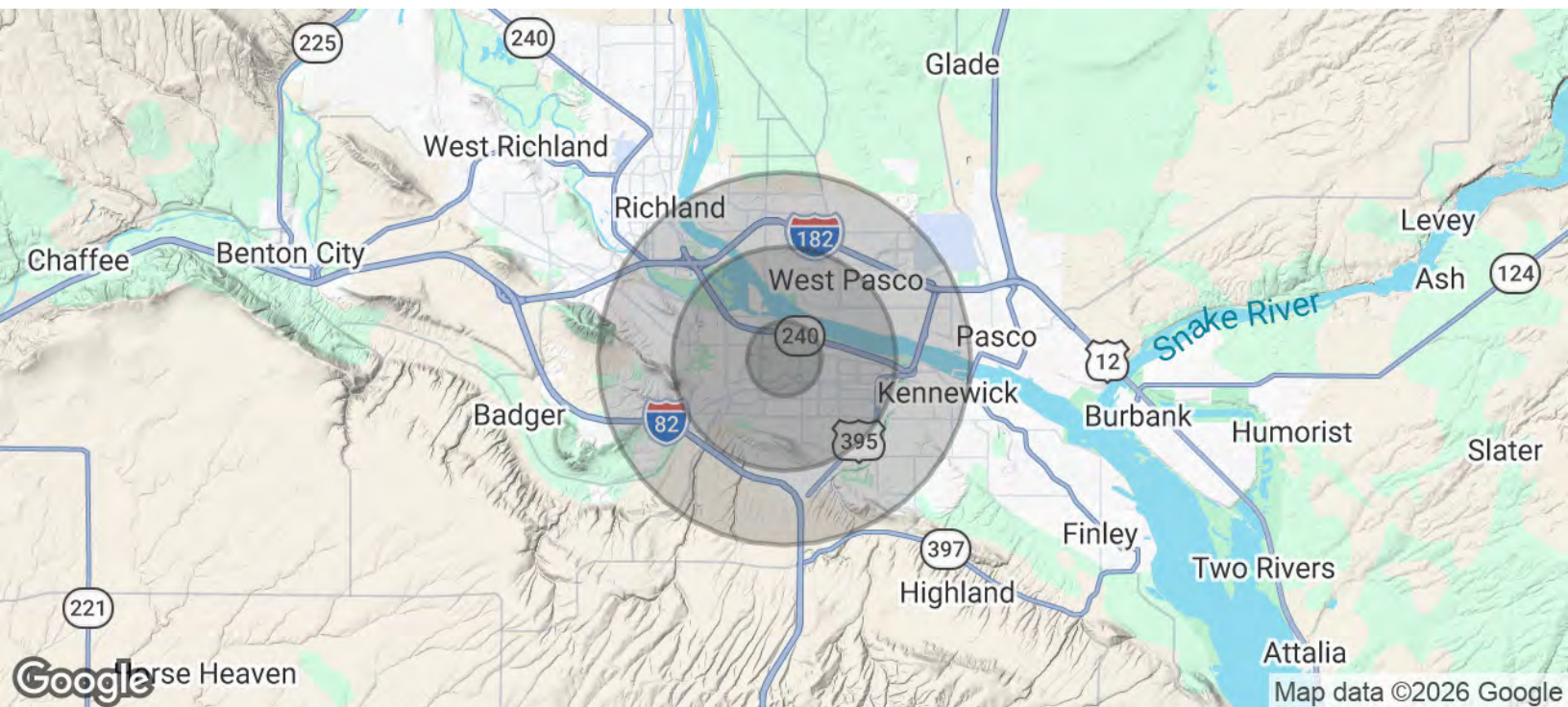
We obtained the information above from sources we believe to be reliable. However, we have not verified its accuracy and make no guarantee, warranty or representation about it. It is submitted subject to the possibility of errors, omissions, change of price, rental or other conditions, prior sale, lease or financing, or withdrawal without notice. We include projections, opinions, assumptions or estimates for example only, and they may not represent current or future performance of the property. You and your tax and legal advisors should conduct your own investigation of the property and transaction.



6802 W RIO GRANDE AVE, KENNEWICK, WA 99336
OFFICE BUILDING FOR LEASE



Demographics Map & Report



Population	1 Mile	3 Miles	5 Miles
Total Population	4,560	63,473	158,036
Average Age	37	39	37
Average Age (Male)	36	38	36
Average Age (Female)	37	39	38
Households & Income	1 Mile	3 Miles	5 Miles
Total Households	1,817	24,515	56,898
# of Persons per HH	2.5	2.6	2.8
Average HH Income	\$82,985	\$112,429	\$112,839
Average House Value	\$331,271	\$413,723	\$404,857

Demographics data derived from AlphaMap

CONTACT

Todd Sternfeld C: 509 539 3998 / todd@naitcc.com
Corren Heeren C: 509 302 9976 / corren@naitcc.com

NATri-Cities

We obtained the information above from sources we believe to be reliable. However, we have not verified its accuracy and make no guarantee, warranty or representation about it. It is submitted subject to the possibility of errors, omissions, change of price, rental or other conditions, prior sale, lease or financing, or withdrawal without notice. We include projections, opinions, assumptions or estimates for example only, and they may not represent current or future performance of the property. You and your tax and legal advisors should conduct your own investigation of the property and transaction.

