

FOR LEASE

# MEDICAL OFFICE SUITE

±2,000 SF

2301 Harrisburg Pike | Lancaster | PA 17601



CALL FOR DETAILS

  
**ZOMMICK MCMAHON**  
COMMERCIAL REAL ESTATE

1306 Wilmington Pike, Suite A-2  
West Chester, PA 19382  
610.359.1100 | [www.zmcre.com](http://www.zmcre.com)

**KNOWLEDGE.  
INTEGRITY.  
RESULTS.**

PROPERTY SITE



 Exclusive Marketing Advisor:



**JEN MEEHAN**  
e: [jmeehan@zmcre.com](mailto:jmeehan@zmcre.com)  
o: 610-359-1100  
c: 484-883-3962

## LAST REMAINING SUITE AVAILABLE FOR LEASE

Address: 2301 HARRISBURG PIKE  
LANCASTER, PA 17601

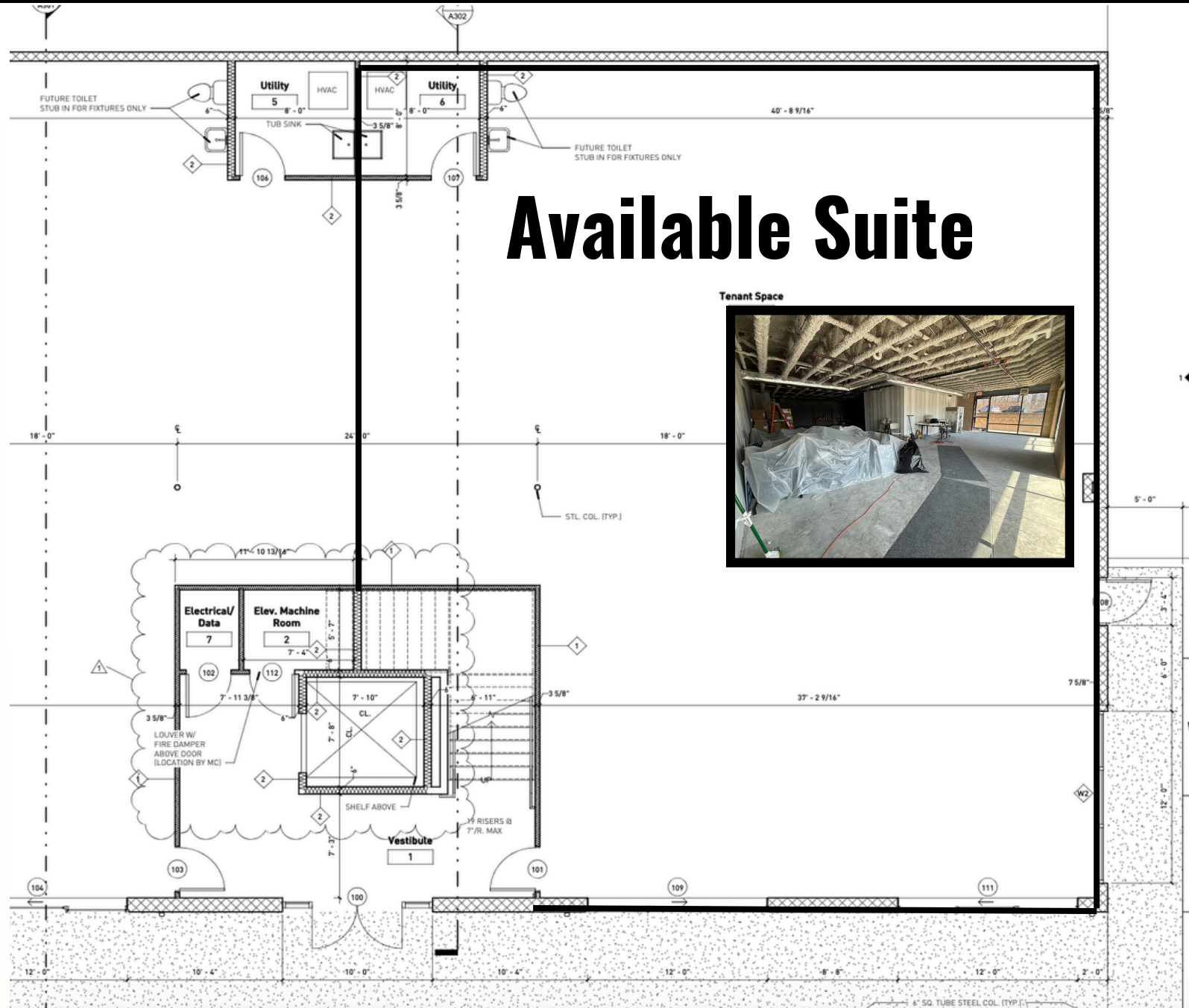
Size: ±2,000

Price: CALL FOR DETAILS

## PROPERTY DETAILS:

- +/- 2,000 SF Medical Office Space
- First floor suite
- Strong Anchor Tenants
- Abundant parking available
- Build-to-suit options available
- Monument signage opportunity
- Excellent visibility along Harrisburg Pike
- Convenient access to Route 30 and Route 283





# Available Suite

Tenant Space



AVAILABLE  
±2,000 SF

# SITE OVERVIEW AERIAL

2301 HARRISBURG PIKE | LANCASTER, PA | 17601

FOR LEASE



# ABOUT: ZOMMICK MCMAHON COMMERCIAL REAL ESTATE

Zommick McMahon Commercial Real Estate, Inc. has been a Metro Philadelphia Area staple since its inception in 1949. The Company was founded by Joseph Zommick, and continues today with Ryan McMahon and his highly experienced staff. We are much more than just a real estate brokerage firm – we are a team of experienced, consummate professionals who are dedicated to superb customer service. Partner with us for support from some of the top commercial brokers in Pennsylvania, New Jersey and Delaware.



## ZOMMICK MCMAHON COMMERCIAL REAL ESTATE

KNOWLEDGE. INTEGRITY. RESULTS

### JEN MEEHAN

e: [jmeehan@zmcre.com](mailto:jmeehan@zmcre.com)

o: 610-359-1100

c: 484-883-3962

---

1306 Wilmington Pike, Suite A-2  
West Chester, PA 19382

610.359.1100

[www.zmcre.com](http://www.zmcre.com)

---