

Maryland 50 Industrial Park

26,429 SF available

6201 Columbia Park Road
Lanover, MD 20785



Available Immediately

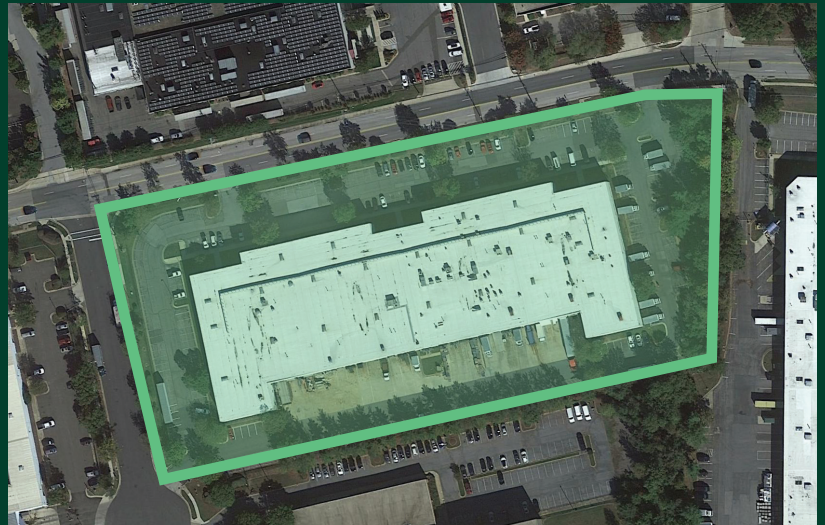
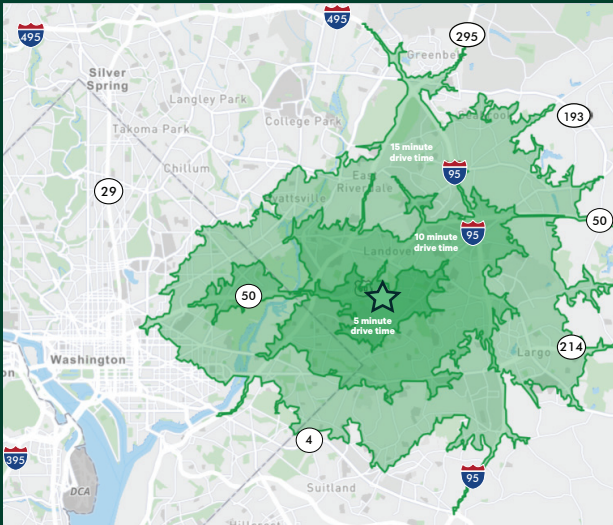
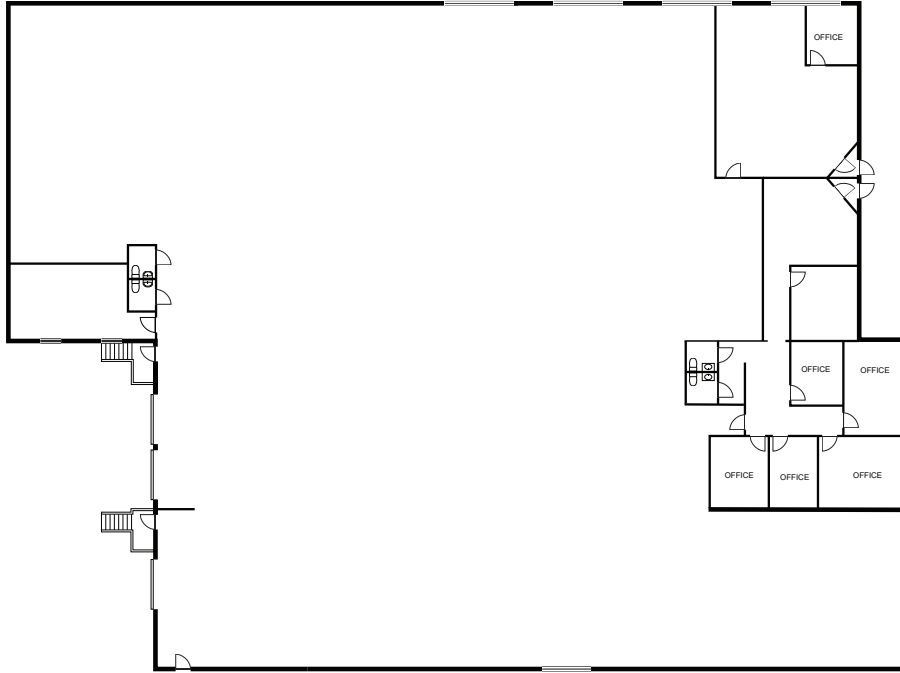
Within a 100,575 SF industrial building featuring wet sprinkler, 35' w x 35' d column spacing, and a parking ratio of 2.5 spaces per 1,000 SF.

Conveniently located in the Lanover submarket, the project sits just south of Route 50 at Route 202 in Prince George's county.

	26,429 SF
Space Type	end cap
Office space	4,269 SF
Ceiling Height	23' clear
Docks	three
Availability	immediately

Floor plan:

26,429 SF
4,269 SF office



Contact Us

Jared Ross
First Vice President
+1 240 994 6477
jared.ross@cbre.com

Kevin O'Neil
Vice President
+1 410 244 3119
kevin.oneil1@cbre.com

Ed Harris
Executive Vice President
+1 410 244 3149
ed.harris@cbre.com

© 2024 CBRE, Inc. All rights reserved. This information has been obtained from sources believed reliable, but has not been verified for accuracy or completeness. You should conduct a careful, independent investigation of the property and verify all information. Any reliance on this information is solely at your own risk. CBRE and the CBRE logo are service marks of CBRE, Inc. All other marks displayed on this document are the property of their respective owners, and the use of such logos does not imply any affiliation with or endorsement of CBRE. Photos herein are the property of their respective owners. Use of these images without the express written consent of the owner is prohibited.